




turkis

TECHNICAL SPECIFICATIONS

turkis is a musical meeting point, where horizons expand and traditions find new life. With festival history, starting from det turkise telt in 2010, we're now in a new leap, presenting new currents within a new and forever immersive venue.

GENERAL INFO	2
VENUE	5
SOUND & POWER	7
LIGHTS & BACKLINE	8



WWW.TURKIS.NU
[@TURKISAARHUS](https://twitter.com/TURKISAARHUS)

GENERAL INFO

contact & crew

Booking	/	Baris Citirikkaya & Albert Ehlers booking@detturkisetelt.dk
Production	/	Albert Ehlers albert@detturkisetelt.dk
Tech	/	Malte Martin tech@detturkisetelt.dk
PR	/	Iben Bredholdt pr@detturkisetelt.dk
Finance	/	Thomas Beyer thomas@detturkisetelt.dk

Office phone / +45 71 79 04 26

we're a small **employed** office. concertevenings are run with lovely and dedicated help from **volunteers** - this includes artist host, entrance, bar and stagelight.

location

turkis

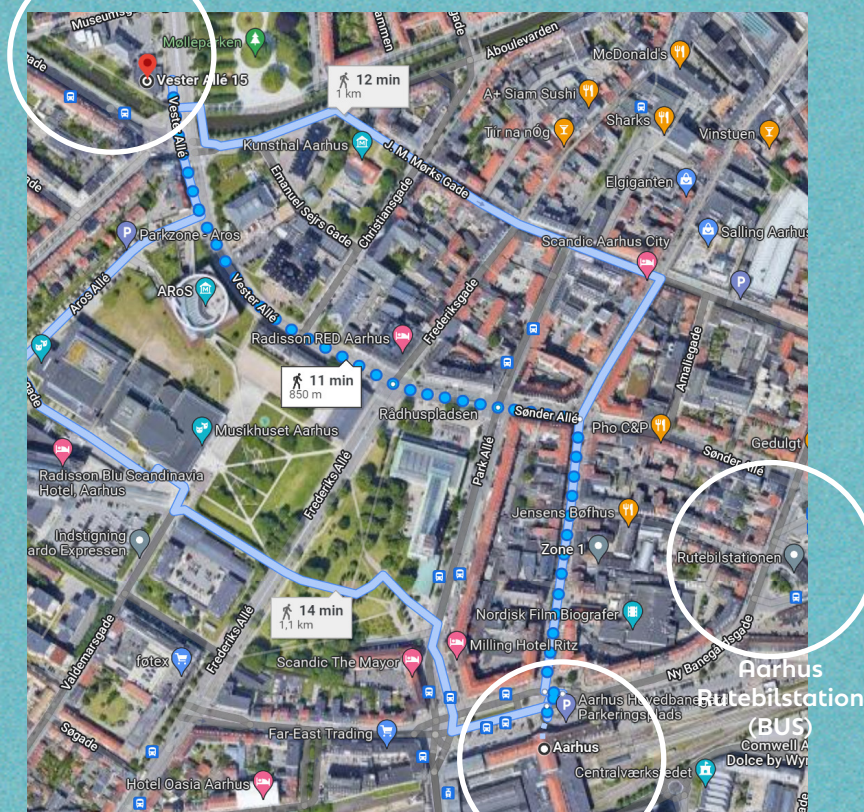
Vester Allé 15
8000 Aarhus C
Denmark

11 min walk
from the train
station

*Aarhus
Hovedbanegård*

or the bus station
*Aarhus
Rutebilstation*

turkis



Aarhus
Hovedbanegård
(TRAIN)

parking & load-in

From **Vester Allé**, turn into Museumsgade. Our staff or volunteers will help with the needed parking license upon arrival.



backstage/office entrance

You'll find the door
In the corner

load-in to stage

Opens from the inside.



backstage

We have two rooms, both painted with natural colours, fitted with couches and chairs. A bathroom with shower and toilet each.

HYBRID HOME



ROOM OF ROOTS



food & drinks

A hot and vegan meal is brought from our local friends in the city. We serve drinks in the backstage fridge. Coffee, tea and snacks are provided. Any drinks from the turkis venue bar is kindly self-paid.

merchandise

We have a table and a desk lamp for setting up your merch. We prefer that you bring your own payment system, otherwise turkis staff can help with setting up a payment system through turkis, of which the revenue can be invoiced to turkis afterwards.



VENUE

the room &

experience elements

We aim to create an organic room that feels like home by being inviting, appealing to curiosity of past memories and inspiring. Our floors are covered in Persian carpets. We have a raised sitting area with pillows and mattresses, and also a large bookcase where we have books, gifts, and small pictures!

Max capacity ticketsales is 300 standing and 150 seated plus a guestlist of 50 people on each.

We have **boxes** that can be placed around the floor for seating, to create intimate atmospheres. Some boxes are modified to hold **sails** for making the room smaller or bigger. In the ceiling above the audience area we have a **curtain system** that can be raised and lowered to accomodate the vibe and needs of each individual concert. Our **bar** is covered in southern tiles and filled with handpicked beverages and Turkish tea. Every Sunday is alcoholfree.

We love when different events reshape our venue and work with experiencedesign.

NEXT PAGES HAS A PHOTO COLLAGE :-)

OBS. the photos are from 2021, the room has many of the same qualities today but are improved since. The photos are taken with the cleaning lights on. At events we can create cozy and warm atmoshoere with our ricepaper lamps, fairylights and stage lamps.



STAGEVIEW



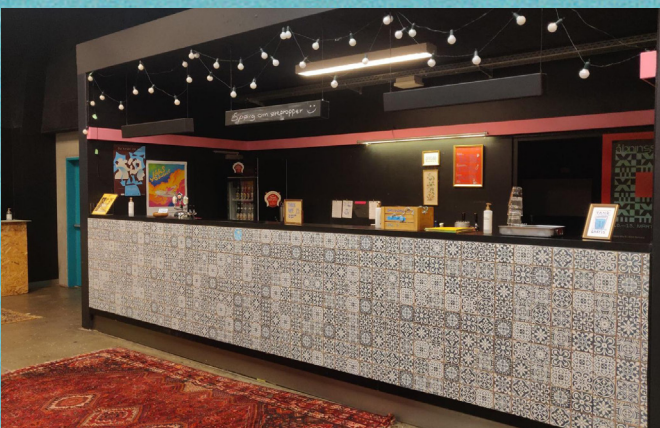
SIDEVIEW



FRONT OF HOUSE VIEW



BAR



BOXES



SAILS



CURTAIN SYSTEM



PROJECTOR CANVAS



SOUND

Noise regulations:

103 dB(a) over 15 min" Measured at FOH.

Main PA:

- 6 x Coda N-Aps - 3 pr. side (Linear-ray Configuration)
- 2 x Coda U4 18" Subs - 1 pr. side

Monitors (6 sends):

- 8 x Turbosound TFM-420 Monitor
- 3 x Lab C28:4 Quad Amps
- 3 x T.C Electronics XO-24 Digi Crossover

Front of house:

- Digico SD-8 24
- Digico 48/8ch Madirack

Microphones:

- 1 x D6
- 1 x Beta 52
- 4 x Audix F9
- 4 x Sennheiser 604
- 8 x SM 57
- 4 x AKG 214
- 2 x Sennheiser 421
- 8 x Sure Beta58A
- 14 x LD Systems DI
- 2 x DPA4099

Mic stands:

- 12 x Long boom stand
- 8 x Short round boom stand
- 2 x Short Xfoot boom stand

Stage risers:

- 2 x 1x2m podiums
- 8 x 20cm legs
- 8 x 40cm legs
- 8 x 60-100cm variable legs
- 1 x black molton riser cover (for 40 cm legs)

Mobile PA system:

- 1 x Midas M32R
- 1 x Midas DL32
- 1 x 50 m. CAT5e
- 2 x Turbosound NuQ152-AN top
- 2 x Turbosound NuQ118B-AN sub
- 6 x Turbosound TFX122M-AN monitors

POWER

Power Available on **stage left.**

- 1 x 128/3a
- 1 x 64/3a
- 1 x 32/3a
- 2 x 16/3a



LIGHTS

Lamps:

- 6 x Robe 150 wash (Stagelight)
- 4 x Robe Parfect 100 (Frontlights)
- 6 x Camero Auro Spot z300 (Profiles)

Hazer:

- Swefog K1

Lighting desk:

- Avolites Quartz

Backdrop truss:

- 1 x Movable truss for backdrop (Contains lamps)

Stage:

- W x D x H x Clearance
7,8 x 6 x 0,56 x 4 meters

- 3 x Transverse metal I-beams as riggingpoints over the stage, with 3,25 m distance between them and 4,5 m between stagefloor and beam.

Visuals:

- 4 x Overhead projectors for analog visuals & liquid light show (if wished, it is to be operated by our volunteers)
- 1 x Big, non-movable 10.000 ANSI lumen projector, connectable from stage and FOH with USB-C adaptor to HDMI.

Extra:

- 2 x Sheetstands
- 1 x Nebula Mars II Pro projector 500 ANSI lumen

Sufficient for meetings and small presentations.

BACKLINE

Drums:

- Yamaha Tour Custom Maple 22inch Kick
- 10 inch Tom
- 12 inch Tom
- 16 inch tom
- Yamaha Hardware 700 Series Hi hat stand
- 2 x Snare stand
- 3 x Cymbal stands
- Pedal FP8500
- Yamaha drum chair
- Zildjian 14+17+21 /A
- Pearl 14x6,5 Maple sensiton snare

Bass:

- 1 x Tone hammer 750 bas amp
- 1 x Ampeg SVT-410HLF

DJ equipment:

- 1 x Pioneer DJM900NXS2
- 2 x Pioneer CDJ2000NXS2
- 1 x Linkhub

Guitar:

- 1 x Vox AC30 C2 Combo
- 1 x Fender Twin Reverb Combo
- 2 x GTR stands

Keys:

- 1 x Nordstage 3 76 key Hammer action
- 1 x Sustain pedal
- 1 x Piano bench
- 1 x X stand
- 1 x Keystand with two tier adapter for synth
- 1 x Yamaha grand piano (not newly tuned)

