



Architecting Bioregeneration

Corporate Presentation

CONFIDENTIAL
NOT FOR DISTRIBUTION

Not an offer to sell nor a solicitation
of an offer to buy any securities.

Spring 2026

CAUTIONARY NOTE ON FORWARD LOOKING INFORMATION

Forward Looking
Statement

This Presentation contains “forward-looking statements” and “forward-looking information” within the meaning of applicable securities laws (collectively, “forward-looking information”) with respect to CONEXEU. Statements in this Presentation that are forward-looking information are based on currently available competitive, financial, and economic data and operating plans as of the date of this Presentation but subject to various risks and uncertainties concerning the specific factors disclosed herein. Often, but not always, forward-looking information can be identified by the use of words such as “plans”, “expects”, “is expected”, “budget”, “scheduled”, “estimates”, “forecasts”, “intends”, “anticipates”, “will”, “projects”, or “believes” or variations (including negative variations) of such words and phrases, or statements that certain actions, events, results or conditions “may”, “could”, “would”, “might” or “will” be taken, occur or be achieved. Forward-looking information in this Presentation includes, without limitation, statements regarding regulatory submission timelines, including the FDA 510(k) submission and estimated market entry estimates, commercialization dates; the staged regulatory roadmap for expansion into dental, capital requirements, veterinary, 3D bioprinting, and aesthetic indications; total addressable market estimates across multiple verticals; manufacturing milestones, and clinical development plans; capital requirements and the ability to fund operations; and the potential bovine-to-human collagen transition for the aesthetics indication. Except for statements of historical fact, information contained herein constitutes forward-looking information, including, but not limited to: statements pertaining to the development and commercialization of the company’s products; the likelihood of obtaining regulatory clearance or approval; the leadership team; and the potential for the markets that CONEXEU is anticipating to access. Forward-looking information is not a guarantee of future performance and is based upon a number of estimates and assumptions of management at the date the statements are made, including among other things assumptions about: CONEXEU’s ability to raise sufficient capital to fund its regulatory submissions, manufacturing, and operations; the availability of suitable predicate devices to support the 510(k) pathway; the commercial viability of the CXU™ platform across multiple indications; the continued availability of key leadership and scientific personnel; and the ability of CONEXEU to raise additional capital as CONEXEU continues to develop its operations. While CONEXEU considers these assumptions to be reasonable, the assumptions are inherently subject to significant business, social, economic, political, regulatory, competitive and other risks and uncertainties, contingencies and other factors that could cause actual performance, achievements, actions, events, results or conditions to be materially different from those projected in the forward-looking information. Many assumptions are based on factors and events that are not within the control of CONEXEU and there is no assurance they will prove to be correct.

Although CONEXEU has attempted to identify important factors that could cause actual results, performance or achievements to differ materially from those contained in the forward-looking information, there can be other factors that cause results, performance or achievements not to be as anticipated, estimated or intended. To the extent any forward-looking information contains forecasts or financial outlooks, such information is being provided solely to enable a reader to assess CONEXEU’s financial condition and its operational history and experience in the industry. Readers are cautioned that this information may be not appropriate for any other purpose, including investment decisions. Such information, as with forward-looking information generally, is, without limitation, based on the assumptions and subject to the risks and other cautionary statements set out above. The actual results achieved will vary from the forecast or financial outlook results and the variations may be material.

No representation or warranty of any kind is or can be made with respect to the accuracy or completeness of, and no representation or warranty should be inferred from, our projections or the assumptions underlying them. There can be no assurance that such information will prove to be accurate or that management’s expectations or estimates of future developments, circumstances or results will materialize. Readers should note that CXU™ is an investigational medical device that has not been cleared or approved by the FDA for commercial distribution in the United States; all performance statements are based on preclinical data and are not predictive of clinical outcomes; and competitive landscape analyses are based on internal review and have not been independently verified. As a result of these and other risks and uncertainties, the results or events predicted in this forward-looking information may differ materially from actual results or events. Because of the risks, uncertainties and assumptions contained herein, readers should not read forward-looking information as guarantees of future performance or results. Nothing in this presentation is, or should be relied upon as, a promise or representation as to the future. All forward-looking information provided in this Presentation are qualified in their entirety by this cautionary statement, and CONEXEU disclaims any obligation to revise or update any such forward-looking information or to publicly announce the result of any revisions to any of the forward-looking information contained herein to reflect future results, events or developments, except as required by law. Accordingly, readers should not place undue reliance on forward-looking information.

What if we could regenerate the tissue lost to:

Wounds/Burns
Aging
GLP-1
Gum Disease
Cancer Resections

CXU™ is a New ECM Platform Technology

Changing Possibilities into Realities

Restoring and generating native tissue, with the opportunity to elevate the standard of care across multiple potential markets

5 Current Markets

CXU

Medical Aesthetics
Injectables

\$ 11.0B¹

Wound Care
Burns/Full-Thickness

\$ 2.62B²

Veterinary
Wound Care

\$ 1.4B³

Dentistry
Soft Tissue/Gums

\$ 4.2B⁴

3D Bio-Printing
Tissue Scaffolds

\$ 1.6B⁵

1. Source: Grand View Research, "Aesthetic Injectable Market Size, Share & Trends Analysis Report By Product, By Application, By End-use, By Region, And Segment Forecasts, 2024-2030." Report ID: GVR-4-68040-275-9. Available at: <https://www.grandviewresearch.com/industry-analysis/aesthetic-injectable-market-report> 2. Source: Market. Us, "Wound Care Devices Market Size, Share, Growth — CAGR of 4.8%" Updated January 5, 2026. Market valued at USD 2.6 billion (2023), projected USD 4.2 billion by 2033. Available at: <https://media.market.us/wound-care-devices-market-news> 3. Source: VPA Research (via MarketResearch.com), "Animal Wound Care Market Size, Share, and Outlook, H2-2025 — By Product, By Animal, By End-User," Report ID: 42060937. Available at: <https://www.marketresearch.com/VPA-Research-4245/Animal-Wound-Care-Size-Share-42060937/> 4. Source: Consegic Business Intelligence, "Gum Grafting Market — Size, Share, Industry Trends, and Forecasts (2025-2032)," Report ID: CBI_2168, Updated August 2025. Available at: <https://www.consegicbusinessintelligence.com/gum-grafting-market> 5. Source: Global Market Insights, "3D Bioprinting Market Size & Share Report, 2024-2032." Available at: <https://www.gminsights.com/industry-analysis/3d-bioprinting-market>

Conexeu

CXU

Demonstrates a Unique Liquid to Gel Formulation

A flowable, regenerative tissue matrix composed of collagen and natural proteins and sugars.

Engineered for superior tissue integration, and to support better patient outcomes.

On application ,
CXU flows as a liquid

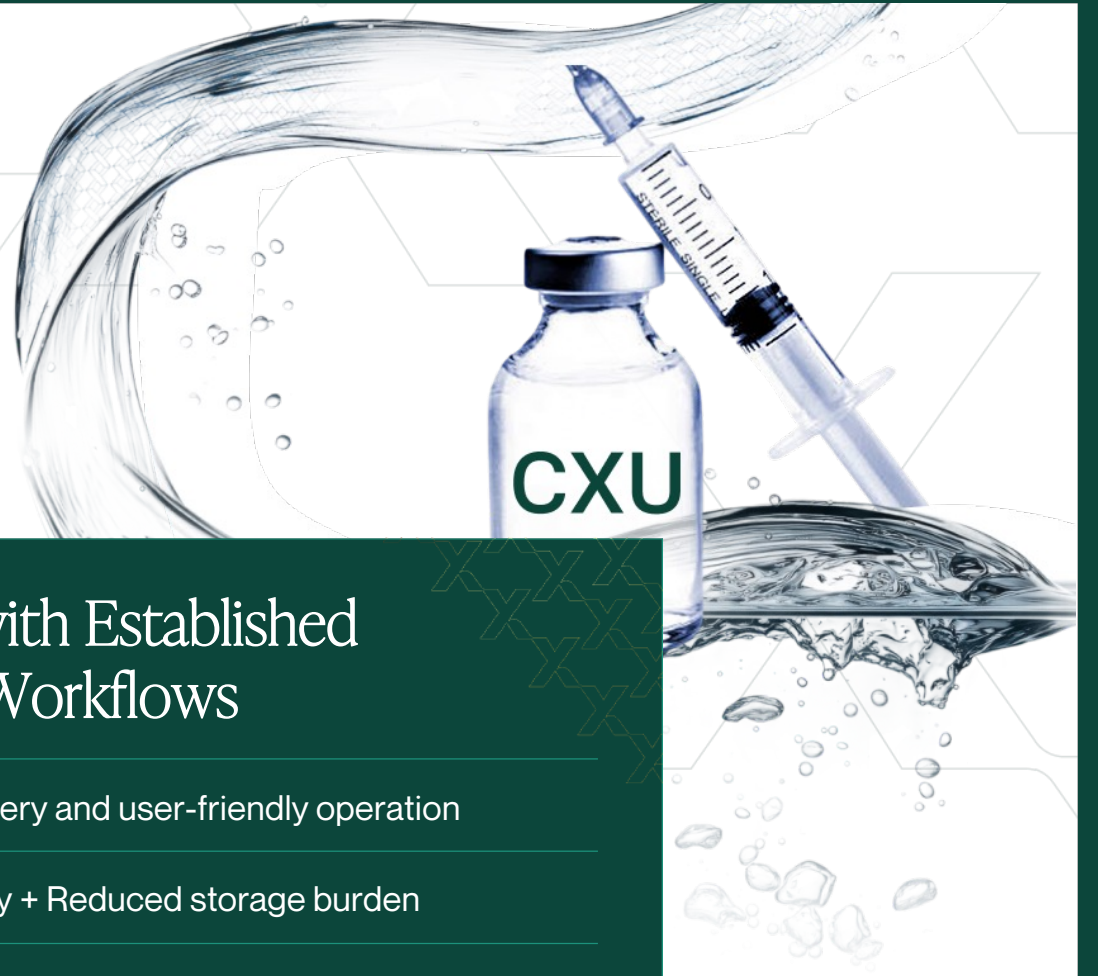
Flows through a 30G needle for precise placement²

Approaching
physiological
temperatures
(37°C), CXU
undergoes rapid
gelation

Gels in place within 10 minutes providing for
contouring without subsequent migration³

1. Pourghadiri A, Alnojeidi H, Jalili R, et al. In situ forming nutritional and temperature sensitive scaffold improves the aesthetic outcome of meshed split-thickness skin grafts in a porcine model. 2. Data on File. Conexeu. 2026. Preclinical findings, not peer-reviewed. Clinical significance not yet established.
3. Pakyari M, Jalili R, Kilani R.T., et al. "Studying the in vivo application of a liquid dermal scaffold in promoting wound healing." *Experimental Dermatology* (2021) 31: 715-724. *Preclinical data; not predictive of clinical outcomes

Architecting Regeneration in a Bottle Ten-Minute Tissue™



Shelf-stable, Scalable Format

Standard vial format, GMP-compatible

Lyophilized powder (ambient storage/no cold chain)

Possible lower logistics cost, global scalability
without formulation change

Works with Established Clinical Workflows

Versatile delivery and user-friendly operation

Easy inventory + Reduced storage burden

Point of care reconstitution (fits into practice flow)

Adaptable to standard surgical or wound care devices

*Concept only
CAUTION: Investigational device.
Limited by Federal (U.S.) law to investigational use. Safety and effectiveness have not been established.

CXU Development

10 Years Of Development

Developed over 10 years at the University of British Columbia.



International Patents

Patents Granted



Patent Assignment

100% Assignment to the right, title, and interest in and to the patents worldwide.

Validated Technology

- Predicate-based regulatory pathway/ 510(k)
- Multiple Advisors/ KOLs in plastics & trauma surgery

11 Peer-reviewed Publications

Acta Biomaterialia, Advances in Wound Care, Biomedical Materials, Canadian Journal of Diabetes, Experimental Dermatology, Gels, Journal of Burn Care, Tissue Engineering, Transplantation



Meet the Architects of Bioregeneration

Leadership Team



Miles D. Harrison

President & CEO

Former President/GM of Galderma North America, scaling their aesthetics portfolio. Served on the executive team for Galderma's \$10.2B sale to EQT; brings a proven record of building category-defining aesthetic brands. Founded Novaestiq Corp. that was acquired by Waldencast; assets put under the brand OBAGI™



David R. Bogart

Founder, Director

Founded Conexeu Sciences. 25-years entrepreneur & capital markets-growth equity operator. Built advisory networks across regenerative medicine, aesthetics, wound care, and capital markets



Dr. Claudia Chavez

M.D., Ph.D. Founder & CSO

World-class tissue engineering scientist with translational programs spanning regenerative medicine and 3D bioprinting. 12+ years of experience with the CXU platform. Holds a Ph.D. in Experimental Medicine and has over 25 years of clinical experience and pre-clinical research



Steve Inouye

CFO

Public markets-ready CFO with over 40 years of financial leadership across biotechnology, small-cap markets, securities, regulations governance, and IPO environments



Dr. Brian K. Pilcher

Ph.D. - CMO

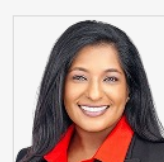
Former CMO of Suneva Medical and VP of Medical Affairs for Merz North America. Strong regulatory experience across Pharmaceutical and medical devices.



Jeff Sharpe

Former-CEO & Current Chairman of the Board

Serial entrepreneur who has guided numerous companies through public listings generating ~\$100 million in financing and delivering successful exits



Sonia Thomas

Head of Strategy & Transformation

Global commercialization leader driving transformation, market access, brand strategy, and scaled go-to-market execution in healthcare and aesthetics



JR Falconnet

Head Business Development & Licensing

Strategic business development operator with a track record of managing transactions, IPO's, exits, partnerships and accelerating revenue growth

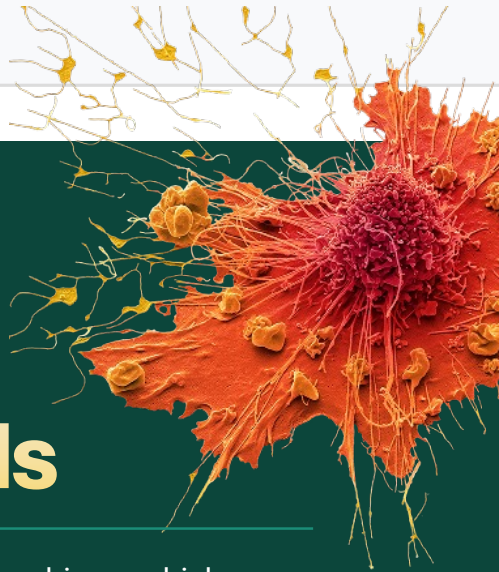
Tissue Regeneration Trilogy

The Science

Tissue regeneration requires the coordinated presence of three essentials¹:

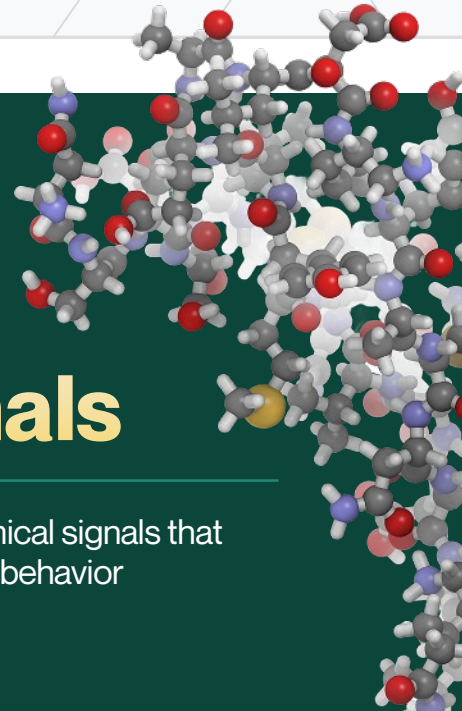
01. Cells

The primary drivers which generate new tissue



02. Signals

The biochemical signals that regulate cell behavior



03. Scaffold


The extracellular matrix provides structural and biochemical support



All three must be present and coordinated. Remove anyone, and the process shifts from regeneration to scar formation.

1. Badyak, Freytes & Gilbert, Acta Biomaterialia 2009;5(1):1-13, PMID 18938117, <https://pubmed.ncbi.nlm.nih.gov/18938117/>

What Injury, Aging and Volume Loss Take Away



Scaffold (ECM) Loss
The structural framework that organizes
Regeneration is compromised.

MARKET NEED

Tissue Regeneration Requires a New ECM.
When the ECM is compromised, the biologic
process shifts from regeneration to scar formation.

Three conditions that erode the ECM

Wound Care

Destroyed by injury

Trauma, burns, and surgical defects physically
destroy the local ECM scaffold, triggering the wound
healing cascade and leading to scar formation.

Aesthetics

Degraded by aging

Over time, the body's ability to maintain the ECM can
decline, weakening the structural framework,
which leads to wrinkles and skin laxity.

GLP-1 Opportunity

Depleted by weight loss

Rapid fat volume loss leaves an ECM envelope without
underlying structure. The result is laxity and deflation.

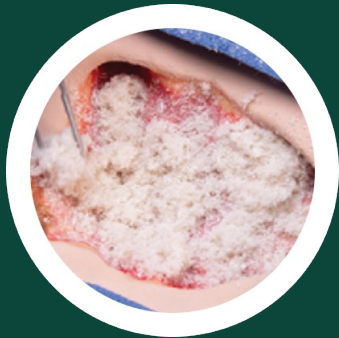
When the ECM is compromised, the biologic process shifts from regeneration to scar formation.

Wound Care Formats

The Incomplete Scaffold Standard

Lack of uniformity and functional ECM in existing treatments can hinder the healing process¹

Incomplete coverage + poor integration = variable healing and delayed closure



Powdered Collagen Fillers

- Incomplete Filling of Wound Bed
- Delayed Integration



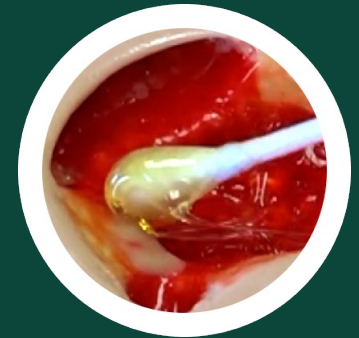
Collagen Grafts

- Difficult in Complex Wound Shapes
- Delayed Integration with Host Tissue



Collagen Flowables

- Thick Gel Consistency
- Slow Integration



Collagen Gels

- Uneven Application
- Challenging Application in Precise Areas

¹ Biomaterials Research (2016) "Physical, morphological, and wound healing properties of a polyurethane foam-film dressing." <https://doi.org/10.1186/s40824-016-0063-5> [Lee et al., Biomaterials Research (2016)]
Lee SM, Park IK, Kim YS, Kim HJ, Moon H, Mueller S, Jeong Y-IL. Biomaterials Research (2016); 20:15.

CXU™ Optimized for Tissue Integration

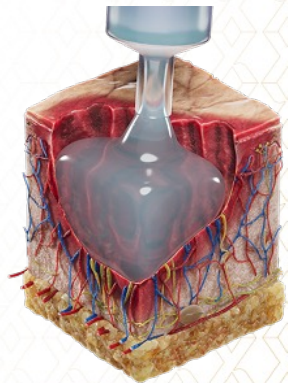
Market Need

A Conforming Scaffold That Fills Voids and Integrates in the Wound

Ten Minute Tissue™ A complete, integrated coverage in wound geometry¹

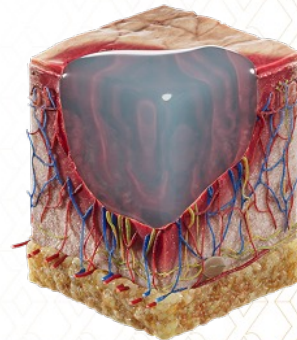
Flowable¹

- Contours to various wound margins and depths, creating a stable interface
- Flows into tissue margins for integration and tissue interface formation
- Ease of injection and precise placement



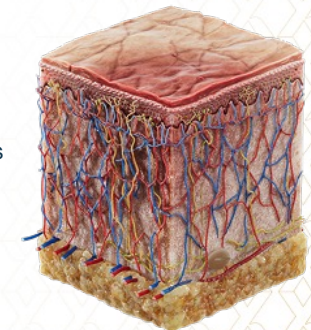
Gels In Place¹

- Temperature sensitive, rapid Gelation In Situ, gels ~10 min
- Provides elasticity and mechanical integrity
- Reduces variability in outcomes, removing “fit” as a failure point



Designed For Better Integration²

- Integration are crucial for tissue regeneration
- May result in fewer failures/re-applications
- Faster path to closure, lower fibrosis and better aesthetic outcomes²



1. Pourghadiri A., Alnojeidi H., Jalili R., et al. In situ forming nutritional and temperature sensitive scaffold improves the aesthetic outcome of meshed split-thickness skin grafts in a porcine model. *Advances in Wound Care* (2021); 10(3); 113–122
2. Pakyari M., Jalili R., Kilani R.T., et al., “Studying the in vivo application of a liquid dermal scaffold in promoting wound healing.” *Experimental Dermatology* (2021) 31; 715–724.

CXU™ Filling the Gap in Tissue Regeneration

About CXU™

Function and Form

A Biomimetic ECM Scaffold¹

Flowable²

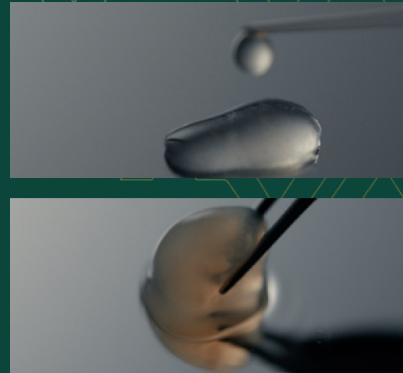
Flows into complex wound geometry (incl. 30G needle)

Thermosensitive²

Liquid-to-gel transition at body temp (~37°C) in ~10 min

Conforming³

Fills voids, conforms into irregular geometries



Conexeu's CXU™ device candidate is intended to support host cell integration and tissue remodeling in a manner consistent with tissue regeneration processes.

The Gap CXU™ Fills in a \$2.6B Market⁴

Function Gap:

Limited Function ECM

2/43

of FDA-cleared KGN wound care devices are collagen-only, or limited in ECM components*

Format Gap:

Limited ECM Format

0/43











of 43 cleared devices offer a flowable, injectable thermosensitive ECM Critical for better healing outcomes

1. Hosseini-Tabatabaei A., Jalili R., Khosravi-Maharlooei M., et al. Immunoprotection and functional improvement of allogeneic islets in diabetic mice, using stable indoleamine 2,3-dioxygenase producing scaffold. Transplantation (2015); 99: 1342–1348 2. Data on File. Conexeu. 2026. Preclinical findings; not peer-reviewed. Clinical significance not yet established. 3. An in-situ forming skin substitute improves healing outcome in a hypertrophic scar model Tissue Engineering Part A (2015); 21(5); 1085–1094 In situ forming nutritional and temperature sensitive scaffold improves the aesthetic outcome of meshed split-thickness skin grafts in a porcine model. *Competitive Data: Landscape analysis is based on Conexeu's internal review of publicly available FDA 510(k) summaries and the TPLC database. Classifications reflect Conexeu's analytical framework and have not been independently verified. * Conexeu FDA KGN Device Review, 2026 (N=43 cleared devices)


One Formula. One Device.

<p>510(k) Predicate Strategy Advantage</p> <ul style="list-style-type: none"> Existing bovine collagen predicates may reduce initial regulatory spend. Predicate strategy designed to compress timelines versus de novo or PMA alternatives. 	<p>Predicate-Based Foundation</p> <ul style="list-style-type: none"> A cleared CXU device would be intended to establish a safety profile and substantial equivalence. Collagen-agnostic formulation designed to support bioequivalence of human-derived version. Liquid-to-gel transition validated in cleared predicate; same mechanism across variants. 	<p>The “One Formula” Advantage</p> <ul style="list-style-type: none"> CXU-B data package is designed to support Pre-Sub alignment with FDA (targeted Q1 2027). Pre-Sub strategy intended to streamline PMA requirements for aesthetics indication. † CXU-B data package is designed to support Pre-Sub alignment with FDA (targeted Q1 2027). Pre-Sub strategy intended to streamline PMA requirements for aesthetics indication. †
---	--	--

A staged pathway designed to unlock multiple markets from a single asset.

INDICATION (KGN)	ASSET	STRATEGY	REGULATORY PATHWAY	TARGET MILESTONES	MARKET ENTRY Estimate*	MARKETS
Phase 1		Wound				
Wound Care	CXU	Predicate	FDA 510(k): Predicate	Q1 '27:510(k) Submission	2027/2028*	 
Phase 2		Horizontal Expansion				
Dental	CXU	CXU Predicate	FDA 510(k): CXU	Clinical Pilot* (2027)	2028*	 
3D Bioink Medical Grade	CXU	CXU Predicate	FDA 510(k): CXU	Preclinical	TBD	 
Veterinary	CXU	Not Required	Not Regulated	Manufacturing Scale Up	2027/2028*	 
Phase 3		High Margin Aesthetics				
Aesthetics	CXU-Human	CXU Predicate	PMA: CXU	Preclinical R&D (2026)	>2030*	 

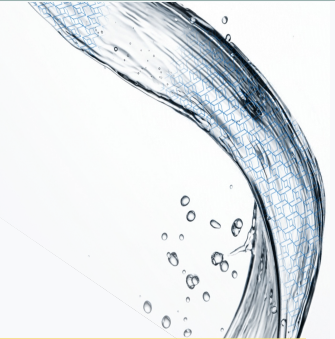
NOTE: CXU is bovine collagen source/ CXU-H is human collagen source
 † See Forward-looking statement. See "Cautionary Note on Forward-Looking Information," Page 2.
 * <2030 reflects current planning estimates; actual timelines may differ



What if we could
regenerate the tissue
lost to aging instead
of just filling space?*

*Preclinical concept; not predictive of clinical outcomes. CXU™ is an investigational device.

Market Problem: Safely Restoring the Extracellular Matrix



Natural Aging

Extracellular matrix (ECM) degradation plus soft tissue and bony volume loss affects overall skin quality and function resulting in appearance of age¹



GLP-1 Deflation

Rapid, significant weight loss depletes facial fat pads and body fat, causing hollowing and skin laxity that can read as accelerated facial and body aging²



1. <https://www.dovepress.com/role-of-adipose-tissue-in-facial-aging-peer-reviewed-fulltext-article-CIA>
2. <https://academic.oup.com/asjopenforum/article/doi/10.1093/asjof/ojaf056/8160112?>

GLP-1 Impact is exposing the real potential within Aesthetics

U.S. Adults

1 in 8

taking prescription weight loss medications¹

CAGR Growth

19.2%

global market 2023-2029²

Global Rx

\$200B

GLP-1 prescriptions forecasted by 2030³

Patients

62%

concerned with loose skin⁴

GLP-1 Patients

63%

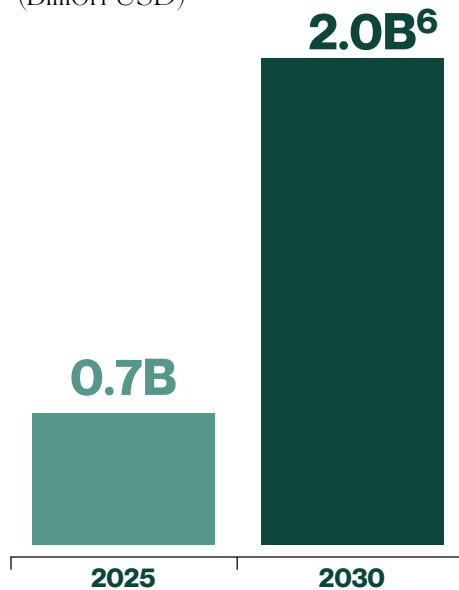
seeking facial aesthetic procedures are new or inactive users⁵

New Provider Revenue

\$1.3B

treating GLP-1 concerns²

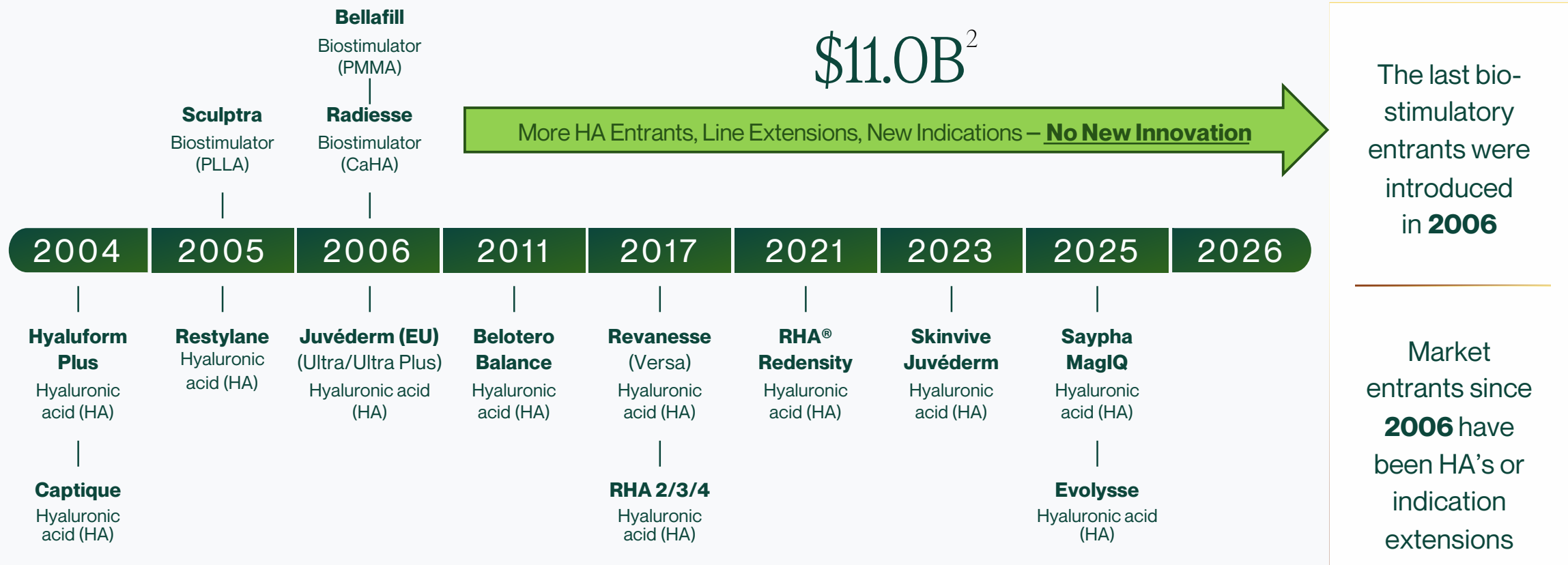
Market Size (Billion USD)



1. Source: Reuters May 2024: Roughly 1 in 8 US adults have taken GLP-1 drugs like Wegovy, poll shows: <https://www.reuters.com/world/us/roughly-1-8-us-adults-have-taken-glp-1-drugs-like-wegovy-poll-shows-2024-05-10/> 2. Source: Grandview Research 2024: North America Glp-1 Agonists Weight Loss Drugs Market Size & Outlook: <https://www.grandviewresearch.com/horizon/outlook/glp-1-agonists-weight-loss-drugs-market/north-america> 3. Source: JP Morgan Feb. 2026: How demand for (and supply of) weight loss drugs is playing out in 2026: <https://www.jpmorgan.com/insights/global-research/current-events/obesity-drugs> 4. Source: New Beauty Aug. 2024: New Report Tracks GLP-1's Impact on Plastic Surgery and Beauty Spending During Election Year: <https://www.newbeauty.com/plastic-surgery-trends-2024/> 5. Source: McKinsey May 2025: GLP-1s are boosting demand for medical aesthetics: <https://www.mckinsey.com/industries/life-sciences/our-insights/glp-1s-are-boosting-demand-for-medical-aesthetics> 6. Source: BCG Aug. 2025: <https://media-publications.bcg.com/Five-Growth-Imperatives-for-Medical-Aesthetics-in-Times-of-Uncertainty.pdf?linkId=850965256>

Market Challenge: Dermal Filler Technology is 20+yrs Old¹

Current solutions fail to address body contouring and GLP-1 driven tissue loss



1. Source: <https://www.fda.gov/medical-devices/products-and-medical-procedures/device-approvals-and-clearances>

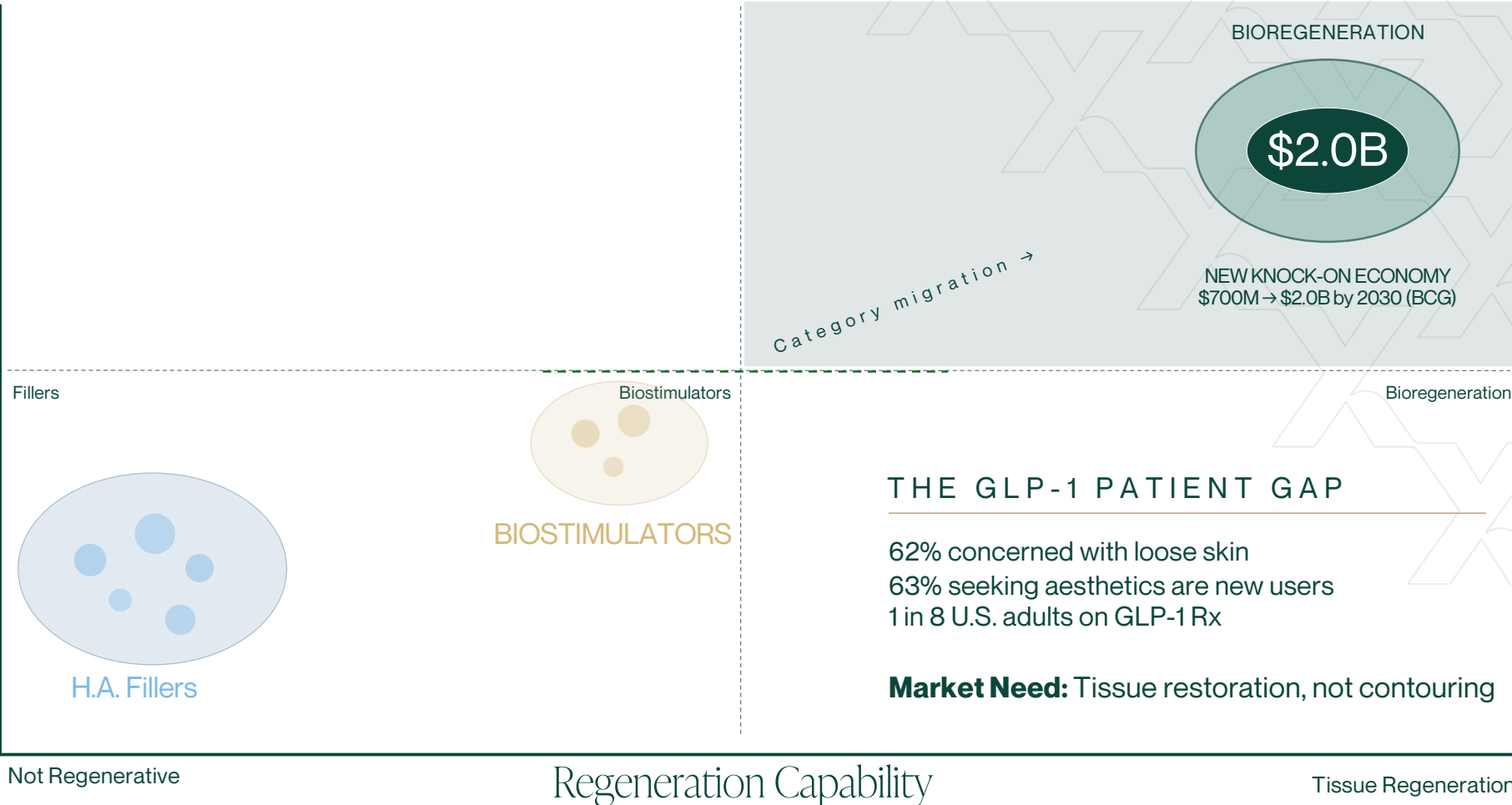
2. Source: Grand View Research, "Aesthetic Injectable Market Size, Share & Trends Analysis Report By Product, By Application, By End-use, By Region, And Segment Forecasts, 2024–2030," Report ID: GVR-4-68040-275-9. Available at: <https://www.grandviewresearch.com/industry-analysis/aesthetic-injectable-market-report>

GLP-1s are creating a \$2B knock-on economy that today's tools can't reach

NEW CATEGORY POTENTIAL

Large Volume
GLP-1 Demand

GLP-1 fueled demand



THE GLP-1 PATIENT GAP

- 62% concerned with loose skin
- 63% seeking aesthetics are new users
- 1 in 8 U.S. adults on GLP-1 Rx

Market Need: Tissue restoration, not contouring

Designing a Next-Generation Injectable Matrix for Tissue Regeneration*



Designing A New Regenerative Platform¹

- Mimics key properties of native extracellular matrix to support tissue in-growth
- Promotes constructive tissue response with minimal inflammation
- Injectable, flowable, and conforming for precise placement across diverse tissue environments
- Provides immediate structural fill with potential for longer-term tissue integration

One platform technology with broad potential across regenerative medicine, wound care, and aesthetic restoration

* Preclinical concept; not predictive of clinical outcomes. CXU™ is an investigational device.
1. Data on File. Conexeu. 2026. Preclinical findings; not peer-reviewed.

High Potential Utility for CXU™

Designing a new approach for injectable approach for tissue support in aesthetics to support to support tissue remodeling processes**



Patented Biomimetic ECM

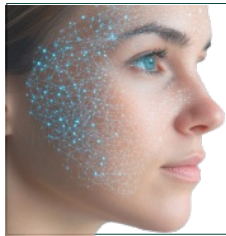
Science Driven • Patent Protected • Pre-Clinical

Aesthetic Product Potential

A Regenerative injectable with the potential to become a category leader in medical aesthetics

Natural tissue in-growth supported by CXU™, a thermosensitive ECM formula¹

1. Data on File. Conexeu. 2026. Preclinical findings; not peer-reviewed.



Potential Applications¹:

Facial Dermal Injectables

Large Body Contouring (Breast Lifts & Buttocks)

Meet the Architects of Bioregeneration

Directors



Dr. Paul Lorenc

MD, FACS, Director

Dr. Lorenc is board certified by the American Board of Plastic Surgery, a member of the American Society of Plastic Surgeons, International Society of Aesthetic Plastic Surgery.



Sebastian Purcell

PhD, Director

CEO and Chief Investment Officer of 1.2 Capital, an alternative investment management firm.



Dr. Aaron Farberg

M.D., Director

Dr. Aaron Farberg is a double board-certified dermatologist and fellowship-trained Mohs surgeon practicing in Texas. He is the Chief Medical Officer and founder of Bare Dermatology.

Advisors



April L. Burke

Advisor

Finance executive with experience across public companies, private equity-backed businesses, and privately held organizations.



Ana Lucia Bastiani-Posner

MBA, Advisor

C-suite executive and qualified financial expert with 30+ years of leadership experience across Fortune 500 companies and research organizations



Andrew J. Costa

MBA, Advisor

Investor and operator with experience in growth equity, investment banking, and national-scale program leadership.

Meet the Architects of Bioregeneration

Medical Advisors



**Dr. Scott
Rineer**

MD MPH FACEP

Dr. Rineer is a Fellow of the American Academy of Emergency Medicine & a Fellow of the American College of Emergency Physicians. In addition, he is member of the American Medical Association and the Florida Medical Association.



**Dr. Peter
Randelzhofer**

MD, Dent. DGI, NvOI

Specialist for Implantology (DGI / NvOI), implant prosthetics & dental technology;



**Dr. Vijay
Gorantla**

M.D., Ph.D. FRCS
Advisor

Dr. Gorantla is tenured Professor of Surgery at Wake Forest University School of Medicine and the Wake Forest Institute for Regenerative Medicine



**Dr. Anthony
Papp**

MD, PhD, FRCS
FABA, Advisor

Dr. Anthony Papp is a royal College board-certified plastic surgeon, 25+ years' experience.

Company Highlights



Disruptive Formulation & "Liquid-to-Gel" Technology

- CXU™ device candidate provides a stable scaffold that supports cellular infiltration, vascularization, and native tissue remodeling¹
- Designed to mirror native human ECM, to provide a more supportive environment than collagen alone.
- A thermosensitive low-viscosity flowable liquid at room temperature, allowing for precise placement.
- Gels when reaching body temperature, conforming to irregular geometries for improved integration



Massive Multi-Vertical Addressable Markets²

- **~\$20B Combined Global TAM:** One core technology targeting five high-margin sectors
 - **Medical Aesthetics (\$11B):** Volumization with tissue remodeling support in facial and body contouring³
 - **Dental (\$4.2B):** Targeting soft tissue and gum regeneration, forecast to reach \$11.3B by 2035
 - **Wound Care (\$2.6B):** Advanced skin substitutes for burns and complex chronic wounds
 - **Veterinary (\$1.4B) and 3D Bio-Printing (\$1.6B):** Scalable tissue inks for personalized grafts



Regulatory & Commercial Efficiency

- **510(k) Predicate-Based Regulatory Pathway:** Utilizing the Predicate Device Strategy to potentially de-risk the path to market
 - Cost Advantage: Expected regulatory spend for a 510(k) submission vs. for a De Novo device
 - Time-to-Market: 510K submission expedites timeline to commercialization, to enable revenue generation up to four years faster than de novo alternatives*



Global Intellectual Property Moat

- Patents granted in **40+ countries** (including U.S., EU, Japan, Australia) covering the core thermosensitive collagen scaffold and formulation. Proprietary, temperature-responsive ECM scaffold developed over 10+ years at the University of British Columbia
- Scientific validation: Backed by **11 peer-reviewed publications** in top-tier journals and **\$13.5M+ in total equity** / non-dilutive financing



World-Class Leadership & Strategic Optionality

- **Billion Dollar Track Record:** Management with deep expertise in scaling global healthcare brands
- Combined team has driven portfolio of **\$2.0B+ in revenue** and executed **multiple billion-dollar exits**

1. Pakyari M., Jalili R., Kilani R.T., et al., "Studying the in vivo application of a liquid dermal scaffold in promoting wound healing." Experimental Dermatology (2021) 31; 715-724.

2. Ref. Page 5 - TAM

3. Data on File, Conexeu, 2026. Preclinical findings; not peer-reviewed. Clinical significance not yet established.

One Formula
One Device

EXU

1

Platform

5

Markets

\$20B

Combined Global TAM

Conexeu

Contact

Conexeu Sciences Inc.

Investor Relations

IR@conexeu.com

+1 (424) 333-5622 | ext. 7

Directory

Conexeu Sciences Inc.

50 West Liberty Street
Suite 880
Reno, NV 89501

Legal Counsel

McMillan LLP
1055 West Georgia St., #1500
Vancouver, V6E 4N7 BC
Canada

+1 (604) 689-9111

Auditors

Adeptus Advisory Group, LLC
733 State Route 35
Ocean, NJ 07712

+1 (732) 595-3115

CONFIDENTIAL
NOT FOR DISTRIBUTION

Not an offer to sell nor a solicitation of
an offer to buy any securities.