

ELEV 30

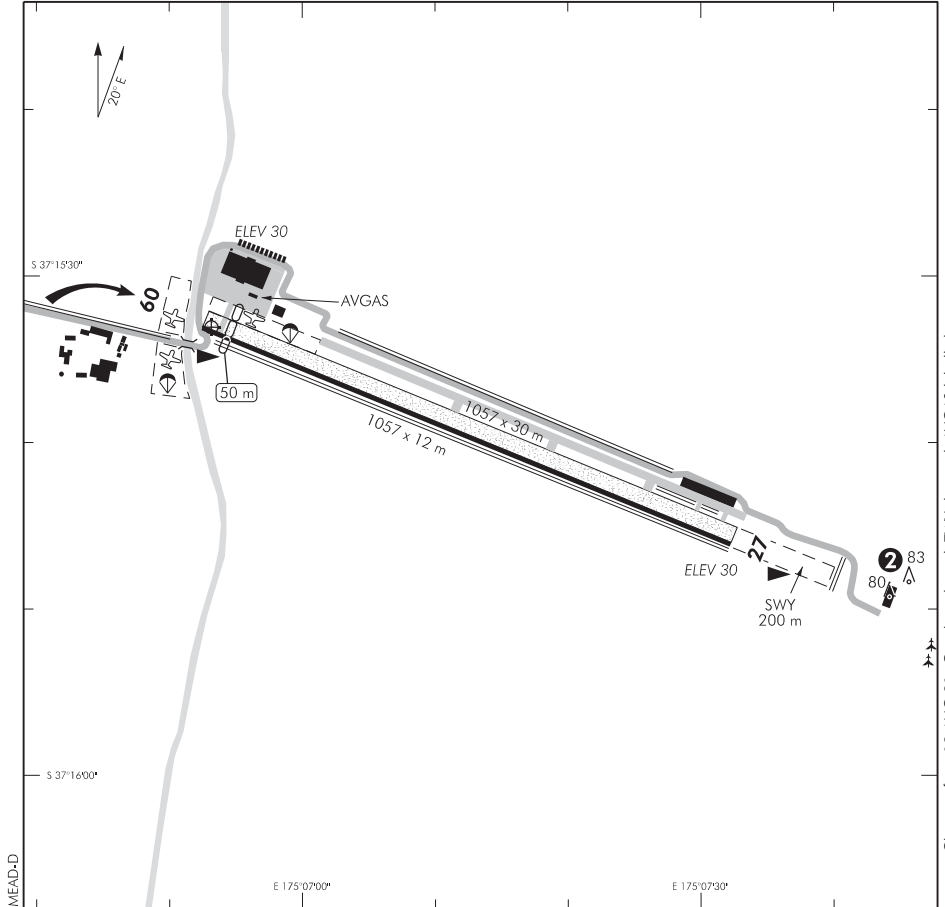
NZME

NON-CERTIFICATED

UNATTENDED: 119.2

**MERCER****AERODROME**

AWIB: 119.2 (Note 8)



Changes from 12 AUG 21: Graphic editorial, TWY depicted, AVGAS labelled.

1. Circuit Direction      RWY 09 — Right hand  
RWY 27 — Left hand
2. **CAUTION:** Aircraft are to remain clear of the circuits while engine testing is underway at the eastern end of airfield. Testing will be advised by NOTAM and on 119.2 during operations of up to 5 minutes. If large amounts of white steam is observed, testing is underway.
3. Simultaneous operations prohibited on grass/bitumen runway.
4. RWY marked by white tyres and white threshold marker boards. TWY marked by yellow tyres.
5. Runway edges soft after heavy rain.
6. **CAUTION:** Frequent use by flight training aircraft including simulated forced landings. A skydiving base — no joining overhead when the PLA is active.
7. Model aircraft operate from a mown grass area, 300 m west of RWY THR 27, between RWY and TWY. Operators listen out on handheld VHF 119.2. Operations will cease on receipt of an RTF call from an arriving aircraft.
8. AWIB (Wind & PLA status) is activated by transmitting on 119.2 four times within 3 seconds.
9. Aircraft are to observe circuit direction rules for noise abatement.

S 37 15 33 E 175 06 53

**Effective: 11 AUG 22**

© Civil Aviation Authority

**MERCER**  
**AERODROME**

NZME

**OPERATIONAL DATA****RWY**

RWY	SFC	Strength	Gp	Slope	ASDA	Take-off distance			LDG DIST
						1:20	1:30	1:40	
09 27	Gr/B	ESWL 1530	8	Nil	1257* 1057	1057			1007 1057

\* Includes 200 m SWY.

**LIGHTING**

Nil — Emergency lighting available by prior arrangement

**FACILITIES**

Toilet, Wifi and pilot lounge in Dome building 100 m west of RWY

Phone and first aid available at Backpackers reception

Maintenance available from West Aero — Karl 021 808 176

Accommodation available onsite at Mercer Hotel Backpackers — [www.mercerhotel.co.nz](http://www.mercerhotel.co.nz)  
Tel 09 232 6767 or [info@mercerhotel.co.nz](mailto:info@mercerhotel.co.nz)

Parking and tie-downs

Fuel: Avgas — GoFuel BP swipecard  
Jet A1 — on request

Accommodation, hangarage and transport generally available by prior arrangement

**SUPPLEMENTARY**

Aerodrome Operator: Palms on George Ltd  
PO Box 742, Pukekohe 2340  
Tel 09 236 8644  
Email: [office@mercerairport.co.nz](mailto:office@mercerairport.co.nz)  
Website: [www.mercerairport.co.nz](http://www.mercerairport.co.nz)

Available for general use for private operations — pilot to determine suitability for operation.  
Commercial operations subject to prior approval of the operator.

Landing fee \$12.65 and overnight parking from \$10 for private operators of light aircraft.  
Will be billed monthly.