



PUBLIC SUMMARY OF THE
FOREST
MANAGEMENT
PLAN **2023**

FBU **MUCURI**



PUBLIC SUMMARY OF THE FOREST MANAGEMENT PLAN 2023

1st EDITION | SEPTEMBER 2024

FBU
MUCURI

SUMMARY

03 1. ABOUT THE SUMMARY

16 6. FORESTRY BUSINESS UNIT MUCURI

54 11. RECOGNITION AND RESPECT FOR OUR PROFESSIONALS

05 2. ABOUT SUZANO

21 7. SOCIOECONOMIC ASPECTS

58 12. SOCIAL MANAGEMENT

08 3. WHERE WE ARE

25 8. THE IMPORTANCE OF PLANTED FORESTS

70 13. COMMUNICATION WITH STAKEHOLDERS

12 4. FOREST OPERATION AREA

29 9. FOREST MANAGEMENT

14 5. FOREST CERTIFICATION

36 10. ENVIRONMENTAL MANAGEMENT

PROCEEDINGS

Every year, Suzano S.A. prepares its Forest Management Plan for the regions where it operates based on data from the previous year and according to results for monitoring and control or significant changes in forestry operations, responsibilities and socioeconomic or environmental conditions.

Images

Suzano's Archives

Cover

Yellow tyrannulet
(*Capsiempis flaveola*)

10

ABOUT THE SUMMARY



In this public summary of the Forest Management Plan, Suzano S.A. presents information on the forestry activities in the region, including responsibilities, available resources and strategies used in the adoption of responsible forest management focusing on sustainable development.

It is a synthesis of the Forest Management Plan based on the main forest certifications: FSC® – Forest Stewardship Council®, FSC- STD-BRA-01-2014 V1-1 PT FSC and NBR 14.789:2012. Each system has its own principles and criteria.

Suzano S.A.'s Forest Business Units (FBU) under the scope of the forest certifications are licensed under the following codes: FSC-C009927, FSC-C100704 , FSC-C110130, FSC-C155943 and FSC-C118283

The Public Summary of the Forest Management Plan is emailed to the Company's main stakeholders: Society, public authorities, neighbors and communities located in its areas of operation, as well as employees and vendors.

Have a pleasant reading!



Additional information, questions, feedback and suggestions that may arise from this reading should be sent to: suzanoresponde@suzano.com.br or calling: **0800 022 1727**

ABOUT
SUZANO S.a.

2023





A global leader in eucalyptus pulp manufacturing and one of the largest paper producers in Latin America, the company exports to over 100 countries and, with a broad and diversified portfolio, is present in the lives of more than 2 billion people.

Resulting from the merger between *Suzano Papel e Celulose* and *Fibra Celulose*, Suzano is committed to being a global reference in the sustainable use of renewable resources.

We are a renewable-based company primarily focused on eucalyptus pulp and paper produced from plantations specifically for this purpose, serving companies around the world. With operations across 12 industrial sites, as well as joint ventures Veracel and Spinnova, we have an installed capacity of 10.9 million tons of market pulp and 1.5 million tons of paper per year.

The company's forestry base consists of approximately 2.7 million hectares dedicated to forest management and conservation, and we currently plant over 1.2 million eucalyptus seedlings daily.

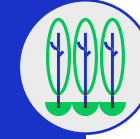
We employ around 49,000 direct and indirect workers and invest in innovative solutions derived from eucalyptus planting, enabling the replacement of fossil-based raw materials with renewable sources.

In cultivating our eucalyptus forests, we use the best management practices globally, contributing to soil fertility maintenance and protection against erosion and degradation. We are also a reference in bioproducts, developing sustainable and innovative solutions from renewable sources, following our purpose of "renewing life from the tree." This is how Suzano plants the future to make the world a better place.

We plant and grow trees. We transform this renewable raw material into innovative and sustainable bioproducts that are part of your daily life.



OPERATIONS ACROSS **12 INDUSTRIAL SITES**



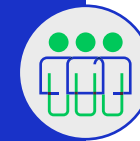
FOREST BASE OF **2.7 MILLION HECTARES**



INSTALLED CAPACITY OF **10.9 MILLION TONS OF MARKET PULP AND 1.5 MILLION TONS OF PAPER PER YEAR**



WE PLANT MORE THAN **1.2 MILLION EUCALYPTUS SEEDLINGS DAILY**



APPROXIMATELY **49,000 DIRECT AND INDIRECT EMPLOYEES**

For Suzano, trees are a symbol of renovation.

With them, we plant a future of innovation and sustainability. This is what we call “innovability”. We believe that trees are the basis for it and that our crops can generate renewable inputs for several businesses. That’s how we evolve more and more.

We operate responsibly based on our expertise in eucalyptus crops. This means that we always use the best management practices in cropping – that is how we contribute for the maintenance of fertility and protection against erosion and degradation.



**PEOPLE WHO
INSPIRE AND
TRANSFORM**



**WE CREATE
AND SHARE
VALUE**



**IT'S ONLY GOOD
FOR US IF IT'S
GOOD FOR THE
WORLD**



NEW RENEWING LIFE FROM TREES. RENEW



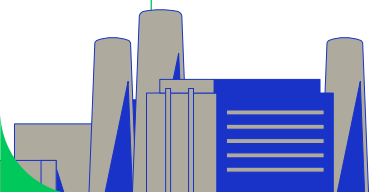
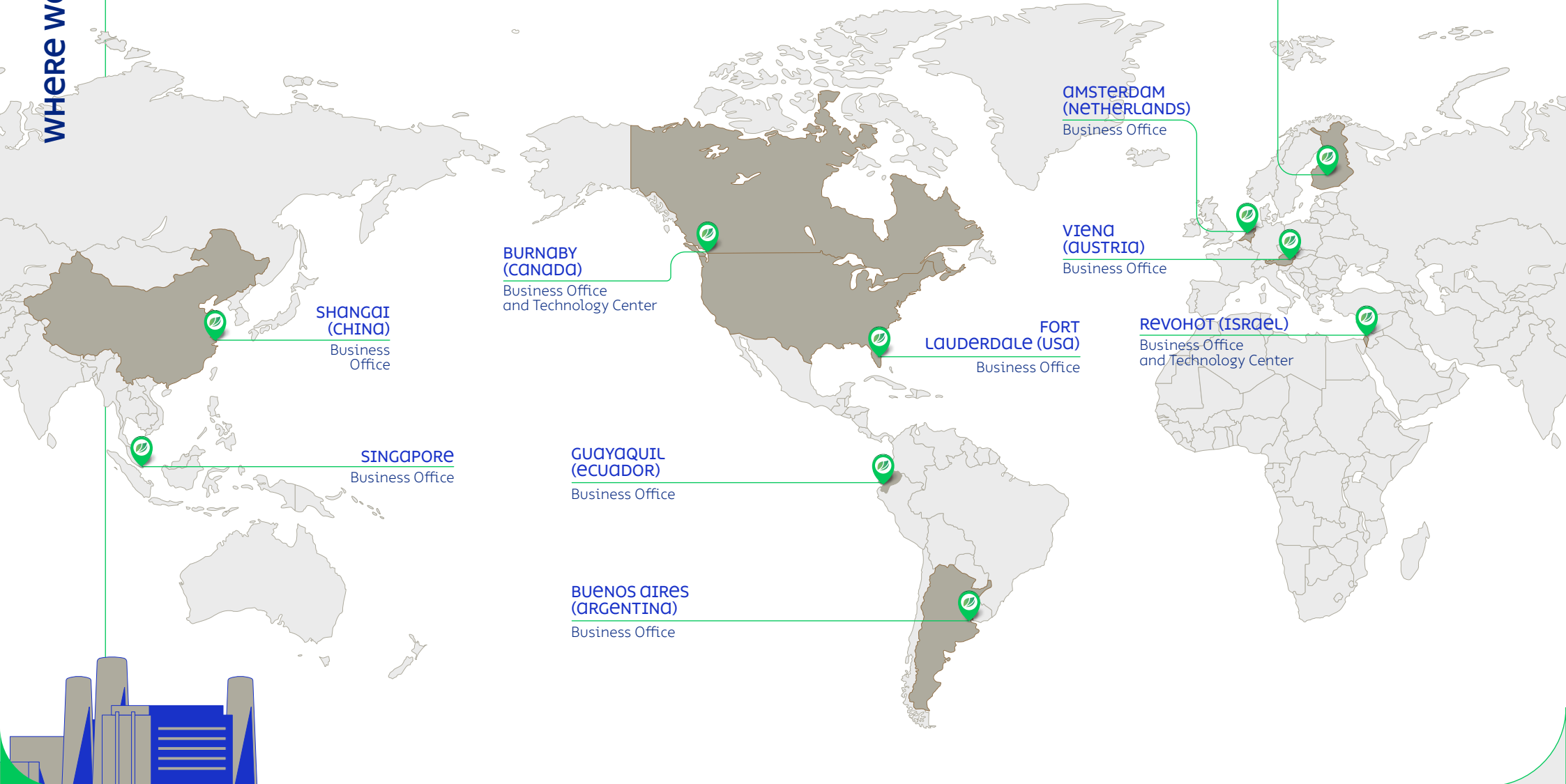
This is our purpose. We need to renew our ways of producing, consuming, distributing value, and relating with nature. Each eucalyptus seedling carries solutions for sustainable and innovative ideas for society.

30

WHERE
WE ARE

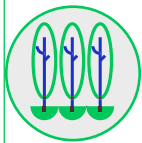
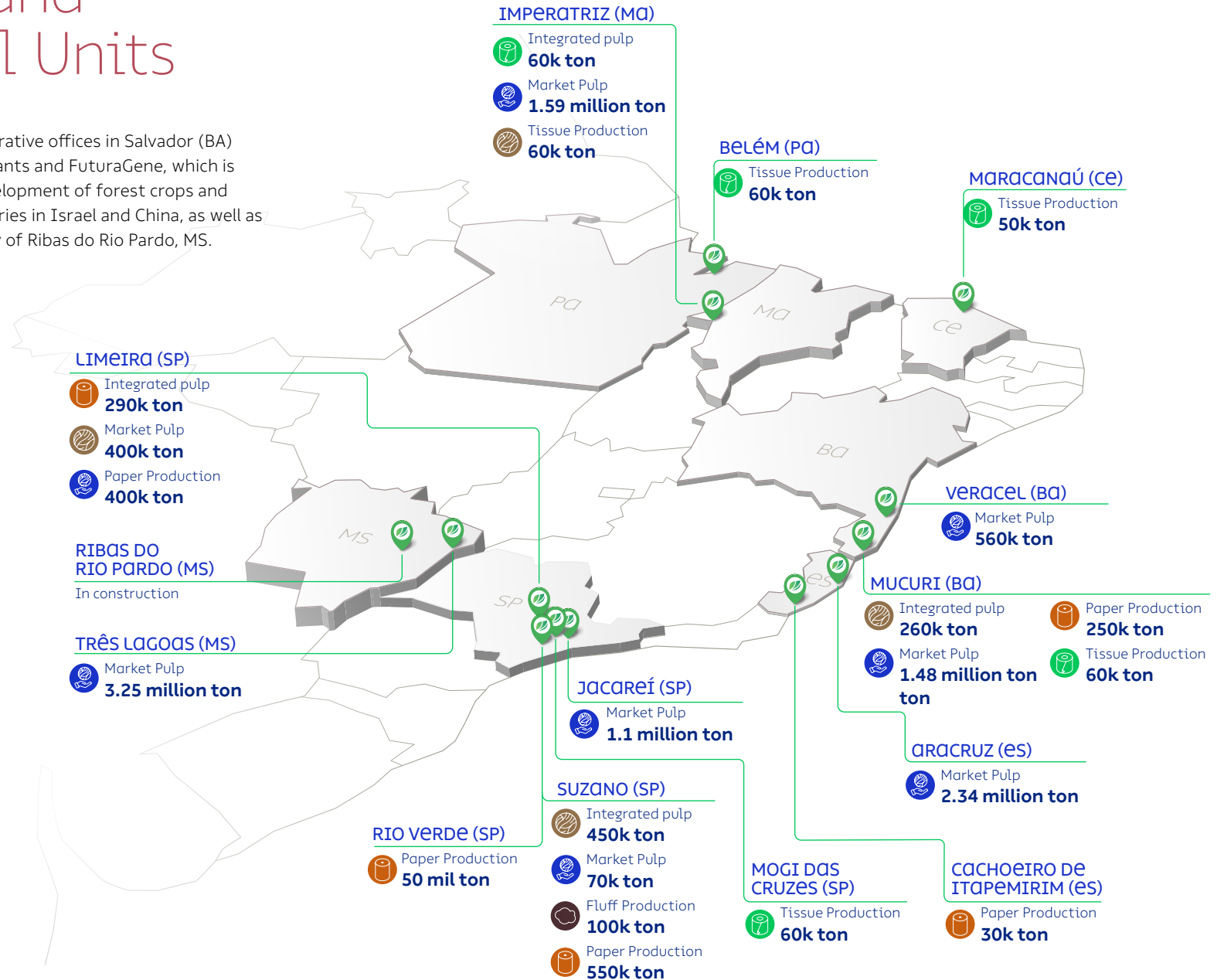


Abroad, we operate in Austria, Canada, China, Ecuador, United States, Finland, Netherlands, Israel and Singapore.



Forestry and Industrial Units

Our structure includes administrative offices in Salvador (BA) and São Paulo (SP), industrial plants and FuturaGene, which is responsible for the genetic development of forest crops and biofuels, with research laboratories in Israel and China, as well as a new facility in the municipality of Ribas do Rio Pardo, MS.



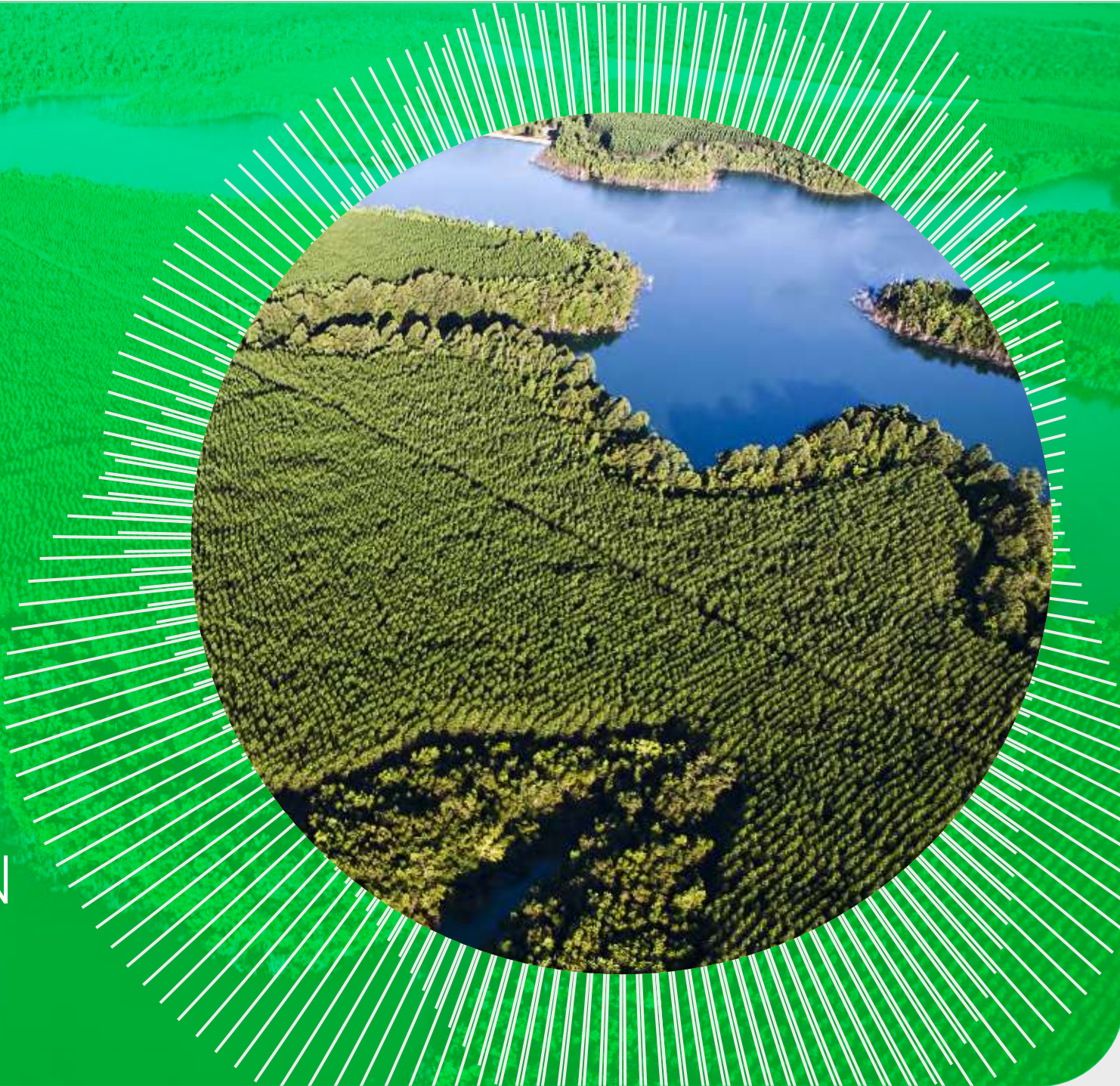
1.6 MILLION HECTARES OF PLANTED FORESTS



1.1 MILLION HECTARES OF PRESERVED FORESTS

40

FOREST
OPERATION
AREA



Forest assets with certification

Suzano's forest competitiveness ensures its operation in different regions with adequate productivity.

Owned and leased areas and partnerships

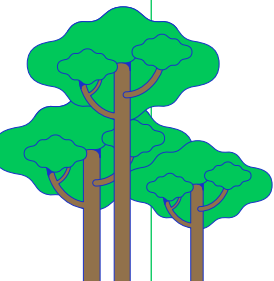
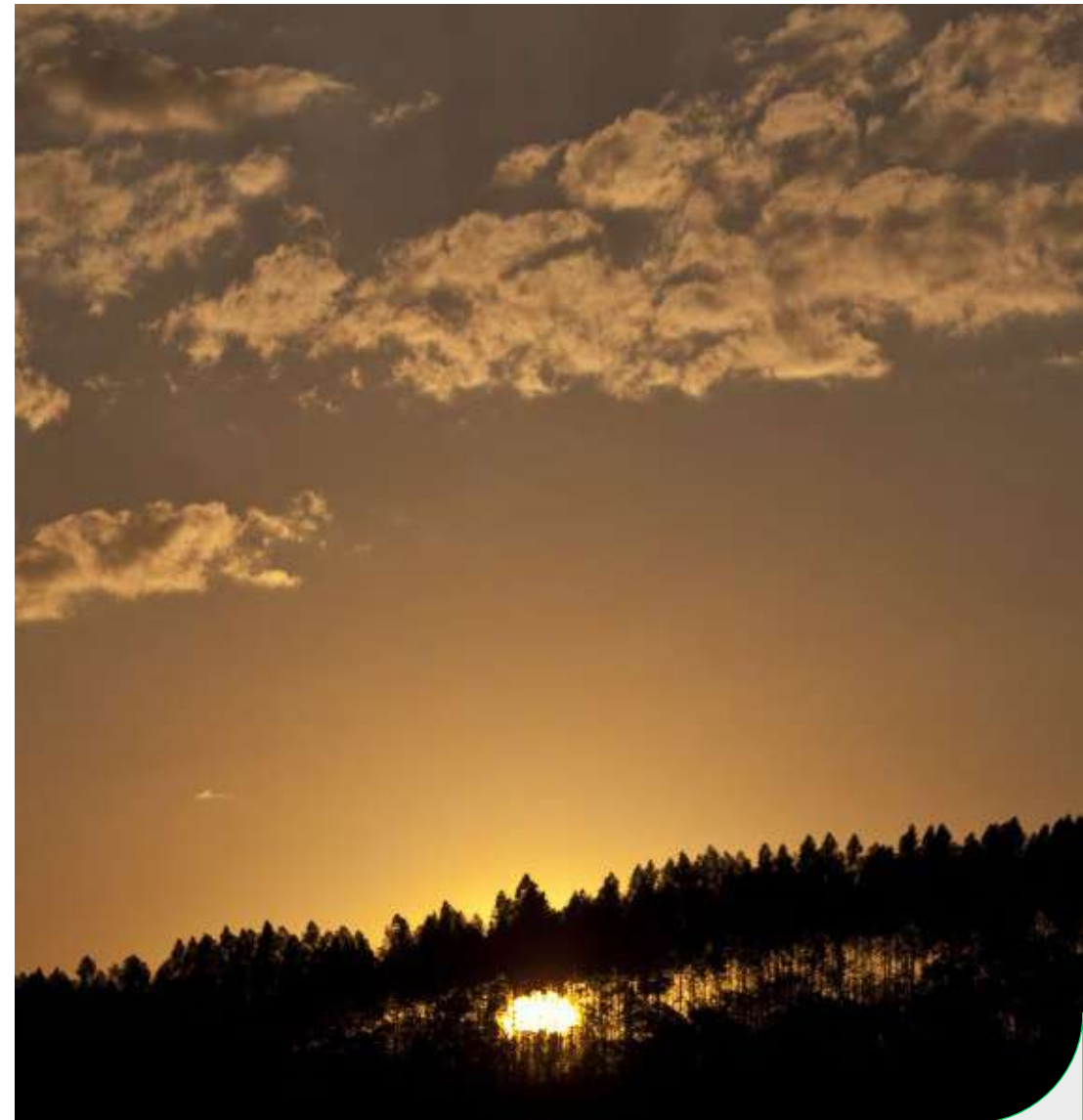
BUSINESS UNIT	TOTAL CROP AREA (HA)	PRESERVATION AREA (HA)	INFRA STRUCTURE (HA)	TOTAL (HA)
Mucuri	223,572	179,038	15,231	417,841
Aracruz	170,567	122,096	14,559	307,223
Imperatriz	220,345	303,435	23,555	547,335
Limeira/Suzano/Jacareí	219,442	140,488	16,691	376,621
Três Lagoas/ Cerrado	441,373	249,808	117,289	808,470
OVERALL TOTAL	1,275,300	994,864	187,326	2,457,491

Data relative to Dec/2023

Forest areas within the scope of FSC® and NBR 14.789 certifications for each forest business units

BUSINESS UNIT (FBU)	CERTIFICATED AREAS FSC® AND PEFC(HA)
FBU BA	359,242.74
FBU ES	265,753.43
FBU MA	487,643.38
FBU SP	359,436.15
FBU MS	618,480.32
OVERALL TOTAL	2,090,556.02

Data relative to Dec/2023



FOREST CERTIFICATION

50



Suzano S.A. is committed to its goal of guiding its Forest Management system according to the Principles and Criteria set forth by the FSC® Certification and NBR 14.789 Forest Management, aiming to provide long-term business sustainability, continuous improvement of its activities and performance, as well as the adoption of environmentally correct and socially responsible practices.



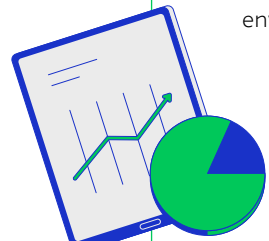
To this end, the company has incorporated the environmental, social and economic dimensions into its forest management basic guidelines, as follows:

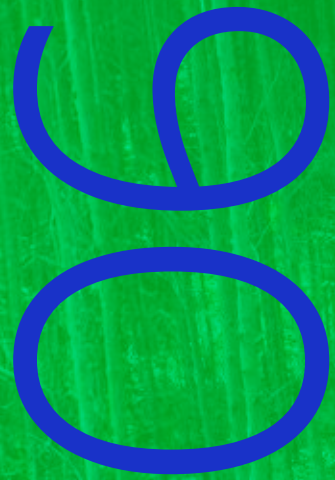
- To seek technological innovations and to support research to apply the best forestry techniques in its forest production units.
- To contribute to the professional development of direct and indirect collaborators.
- To implement the Forest Production Plan based on environmental aspects, such as landscape and microbasins management, monitoring of fauna, maintenance of biodiversity corridors, and compliance with the applicable federal, state and city legislation, as well as international agreements of which Brazil is signatory.
- To contribute to the maintenance or improvement of communities surrounding the forest management units.
- Through open dialogue channels, participative follow-up of social indicators, sharing of relevant information and promotion of recreation areas or environmental.

TIMBER TRACEABILITY

Every timber harvested from eucalyptus crops in certified areas have their traceability ensured (stewardship chain of custody), i.e., origin guaranteed from planting to transportation to the industry, thus eliminating the risk of a mix up with logs from uncertified areas (timber controlled by Due Diligence assessment).

SUZANO HOLDS
FSC® e PEFC
 (NBR 14.789)
 FOREST
 CERTIFICATIONS





FORESTRY
BUSINESS UNIT
MUCURI



Suzano S.A. Forest Business Unit in Mucuri-BA is responsible for the forest management of the areas that supply the industrial unit. The forest management areas are located in the municipalities of Alcobaça, Caravelas, Ibirapuã, Itamaraju, Lajedão, Medeiros Neto, Mucuri, Nova Viçosa, Prado, Teixeira de Freitas and Vereda in the state of Bahia, and Carlos Chagas, Frei Inocêncio, Itanhomi, Jampruca, Jequitinhonha, Nanuque, Pavão, Teófilo Otoni, Tumiritinga and Umburatiba in the state of Minas Gerais.

Crops are planted in owned lands, leased lands or in partnership with rural producers. With a forest base of 417,841.48 hectares, of which, 179,038.01 hectares are destined to the conservation of biodiversity (data relative to Dec./2023), Suzano BA's forest management targets the combination of eucalyptus crops and the conservation of natural resources, technological innovations and respect to communities.

The entire production is based on renewable eucalyptus crops, with the aim of supplying the industrial complex Mucuri - BA, with capacity to produce annually 1.48 thousand tons of bleached eucalyptus pulp, over 250 thousand tons of print and white paper and 60 thousand tons of tissue. The industrial unit Mucuri - BA operates in compliance with environmental control technology aimed at monitoring emissions, air and water quality, and the proper disposal of waste.

FBU BA operates within environmental control standards, using technologies focused on monitoring emissions, air and water quality, and the proper disposal of generated waste.

The seedlings are created with clonal technology, from a certified partner nurseries and hold the most advanced genetic database for the production of pulp.

FBU MUCURI HAS A FOREST BASE OF **417,841.48 HA**, OF WHICH, ABOUT **179,038.01 HA** ARE DESTINED TO CONSERVATION



The harvesting process respects the region characteristics and uses efficient systems that rely on state-of-the-art equipment that allow for a safe, efficient and environmentally adequate operation.

To ensure success in all stages of the process, the company constantly invests in research, technology, and professional training.

Suzano's practice is to recruit candidates from the regions where it operates, provided that they meet the requirements for the job and apply on equivalent terms with other candidates. It is also the company's practice to train the workforce involving the communities in partnership with universities and technical institutions.



Area of operation per municipality

MUNICIPALITY	MUNICIPALITY'S AREA (HA)	TOTAL AREA FARM (HA)	TOTAL AREA OF OCCUPANCY (%)	PRESERVATION AREA (HA)	TOTAL AREA CROP (HA)	OTHER USES (HA)
BA						
Alcobaça	148,228.50	75,590.29	51.0%	32,906.33	40,033.32	2,650.64
Caravelas	237,787.20	97,513.75	41.0%	36,874.27	57,369.58	3,269.90
Ibirapuã	77,109.80	6,476.39	8.4%	2,997.10	3,144.98	334.31
Itamaraju	236,058.00	788.87	0.3%	325.02	413.35	50.5
Lajedão	62,435.30	3,501.07	5.6%	1,301.53	2,102.95	96.59
Medeiros Neto	131,173.90	1,275.12	1.0%	1,178.29	38.76	58.07
Mucuri	178,762.60	71,970.23	40.3%	24,937.25	44,081.04	2,951.94
Nova Viçosa	131,638.00	71,015.16	53.9%	24,703.68	43,439.59	2,871.89
Prado	168,783.30	16,596.02	9.8%	8,367.63	7,455.08	773.31
Teixeira de Freitas	116,562.20	16,104.91	13.8%	8,074.53	7,415.02	615.36
Vereda	78,214.10	6,290.82	8.0%	3,774.83	2,272.08	243.91
Subtotal BA	-	367,122.63	-	145,440.46	207,765.75	13,916.42
MG						
Carlos Chagas	320,298.40	18,625.96	5.8%	11,514.60	6,463.67	647.69
Frei Inocêncio	46,955.70	2,379.41	5.1%	2,379.41	0	0
Itanhomi	48,884.30	731.57	1.5%	725.88	0	5.69
Jampruca	51,709.50	1,091.54	2.1%	1,091.54	0	0
Jequitinhonha	351,421.60	321.3	0.1%	321.3	0	0
Nanuque	151,816.60	19,329.47	12.7%	12,730.00	6,139.04	460.43
Pavão	60,119.00	376.75	0.6%	371.76	0	4.99
Teófilo Otoni	324,227.00	195.22	0.1%	192.81	0	2.41
Tumiritinga	50,007.30	1,961.69	3.9%	1,920.64	0	41.05
Umburatiba	40,583.40	1,151.02	2.8%	871.13	255.82	24.07
Subtotal MG	-	46,163.93	-	32,119.07	12,858.53	1,186.33
OVERALL TOTAL	-	413,286.56	-	177,559.53	220,624.28	151,02.75

Consolidated municipalities Bahia/Minas Gerais - 6/28/2023

Data based on registry and DPN class (available for use)

The municipalities of Diamantina, Senador Modestino Gonçalves, Turmalina and Virgem da Lapa, do not currently supply Suzano's units.

Environmental aspects

The forest areas and other native phytophysiognomies in FBU BA offer possibilities for the conservation of the regional biodiversity. We are in the Atlantic Forest domain (Dense Ombrophile, Semi Deciduous Seasonal Forest and associated formations), that contains broad biodiversity, traditional communities, a rich cultural heritage, tourist sites and water springs.

SOIL, CLIMATE AND HYDROGRAPHY

The soil in FBU-BA is mostly acid, deep, highly weathered, well drained, cohesive, resistant to erosion and compaction; very hard when dry and brittle when humid; low in organic matter; with low natural fertility. There's prevalence of Ultisols, Spodosols and Latosols in Bahia's southernmost region, with high percentages of cohesive soil. As per the terrain in the FBU-BA areas, it is characterized as small elevations and low slopes, being the highest local elevation the historical Monte Pascoal, 586 mt above sea level.

Suzano's crops are centered in a region of tropical warm humid and tropical super-humid climate, where the annual average rainfall is between 1,000 and 1,400 mm/year. The crops in Minas Gerais occupy an area where average annual rainfall range from 800 mm to 1,000 mm/year.

The main watersheds in the state of Bahia, in Suzano's area of influence, are Mucuri, Jucuruçu (south branch), Itanhém (or Alcobaça) and Peruípe Rivers. In the state of Minas Gerais, we can highlight the Rivers Itaúnas and Mucuri basins.



FAUNA AND FLORA

The areas of FBU-BA are inserted into different mosaics of forest coverage and house several phytophysionomies of the Atlantic Forest biome. Generally, our areas encompass forest fragments capable of contributing to the conservation of several species, especially threatened species or endemic to the biome.

The environmental characterization in Suzano’s areas of operation is done through the monitoring of the fauna and flora.

In a general way, the studies seek to identify, randomly or systematically, the local fauna and flora species, to allow the identification of critical species (protected by law), mapping the habitats of endemic, rare and endangered species, and finding opportunities for more detailed studies, restorative actions on the flora, or improvement of environmental conditions for the fauna.

The fauna monitoring campaigns are carried out every three years, while flora monitoring is carried out every four years and it includes expeditions during dry and rainy seasons.



Gray brocket (*Mazama gouazoubira*)



Brazilian tanager (*Ramphocelus bresilius*)



Brown howler (*Alouatta guariba*)

SOCIOECONOMIC ASPECTS

07



Forest areas

Characterizing and identifying the main socioeconomic and cultural aspects present in the Forest Centers to support the work of the company in defining the specific strategies in its area of operation.

The extensive area of operation in the FBU-BA is characterized by different social, economic and cultural realities and by small, essentially rural, municipalities.

Eucalyptus crops are the most dynamic activity in this region, being responsible for important social and productive changes, although traditional activities such as cattle ranching, subsistence agriculture and fishing have great relevance in the local economy.

The region of *Costa das Baleias* (Mucuri, Nova Viçosa, Caravelas, Alcobaça, Prado and Teixeira de Freitas) host a number of small and disperse communities, not linked to one another. The southernmost region of Bahia hosts an indigenous community of the *Pataxo* tribe, in the municipality of Prado. In 2013, we identified in Alcobaça (BA), specifically in the community of *Pau da Garrafa*, a settlement called *Aldeia Renascer*, with characteristics of indigenous traditionality originating from the *Caramuru-Paraguassu*

Indigenous Reserve, in the municipalities of Itajú do Colônia, Camacã and Pau-Brasil, in southern Bahia, belonging to the *Pataxó Hã Hã Hãe* ethnic group. Its location and identification are recognized by the competent body (FUNAI - National Foundation for Indigenous Peoples) and it is also duly mapped and characterized through culturally appropriate processes.

In eastern Minas Gerais, there are indigenous communities of the *Maxacalí* ethnicity, located in the municipalities of Bertópolis and Santa Helena de Minas, which are currently more than 100 km away from the company's planted areas.

The company conducts social asset surveys using tools and instruments to characterize the profile of the locations. These instruments and tools are used to understand and map the main socioeconomic characteristics of the surrounding communities, thus ensuring a strategic direction for working with this public, which will be defined through planning and prioritization instruments.



Archaeological information

The archaeological sites and locations with significant historical and/or cultural relevance located in the company's areas or surroundings are identified in our cartographic base.

Among the main actions performed, we highlight: identifying sites of special historical, archaeological, cultural, ecological, economic or religious significance for the communities and training field staff on archaeological heritage.



Distribution of Suzano's farms, conservation units and management Units for Water Resources

Conservation Units are legally recognized areas, with relevant natural features with the role of securing the representativeness of significant and ecologically viable samples of the different populations, habitats and ecosystems.

The remaining native vegetation and crops have an important role in the set of actions to promote biodiversity conservation locally, regionally or statewide.

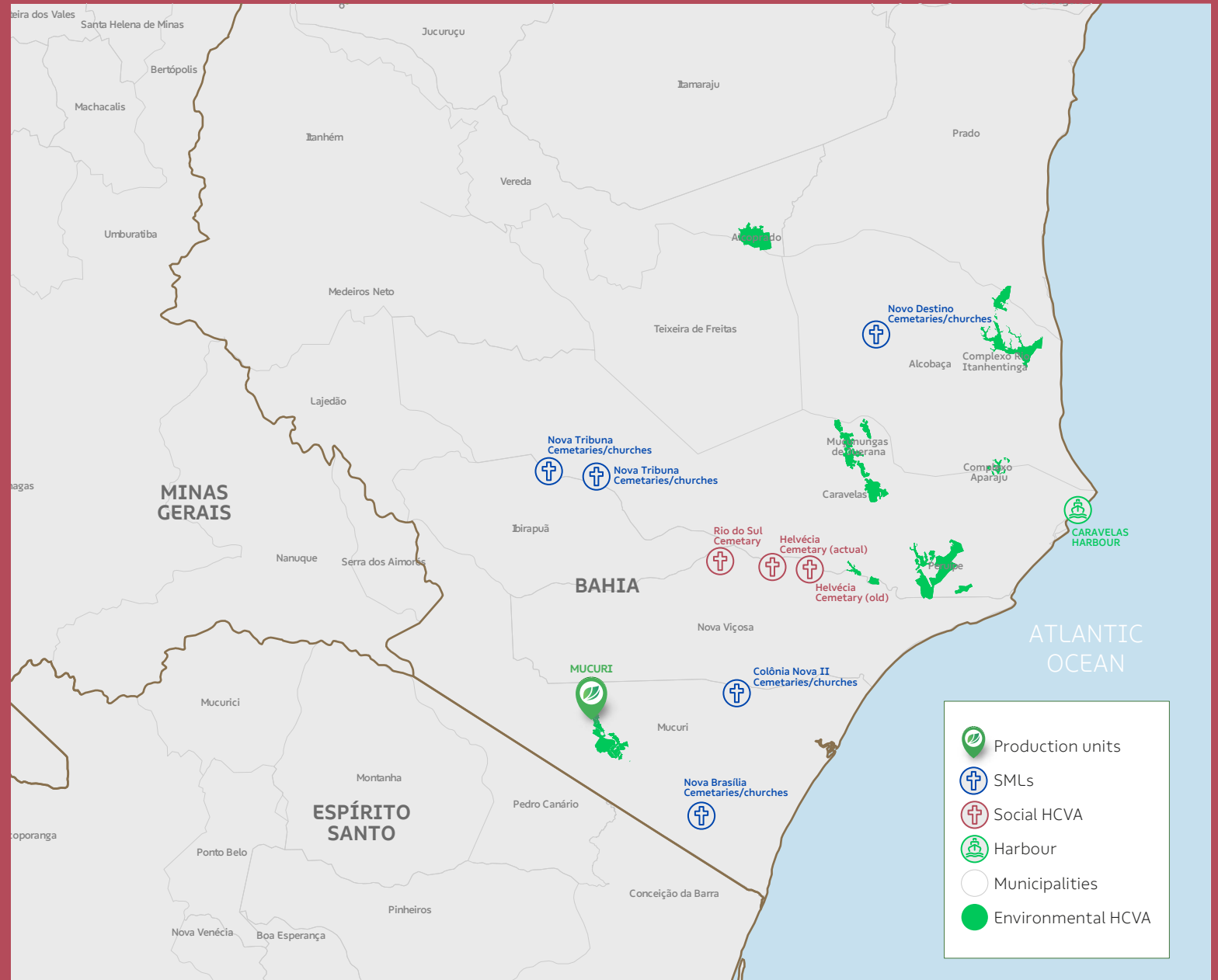
The techniques provided by the company to protect fragments and manage commercial crops have relevant positive effects on the close conservation units since they host important shares of biodiversity and maintain the functionality of key biological and ecological processes.

Furthermore, understanding where the company's areas are inserted relative to the river basins helps us to plan new implementation areas, and to maintain existing crops.

The use of water by operational activities is regulated by state and federal bodies, that define the availability of each resource and the volume needed by other users, and establishes the maximum volume of water to be used by the company, thus granting the supply of other users of the basin.

Social and Environmental HCVAs Map

Some Conservation Units adjoined to Suzano - Mucuri Unit areas are the **Cassurubá Extractive Reserve**, the **Abrolhos National Marine Park** and the **Descobrimento National Park**, in BA, and the **Córrego Grande** and **Córrego do Veado Biology Reserves**, in northern ES.



THE IMPORTANCE OF PLANTED FORESTS



What is forest management?

Forest Management is the administration of forest resources with the aim of achieving economic and social benefits aligned with the mechanisms for ecosystem support by employing the best practices of Eucalyptus farming. The goal is to reach high productivity in balance with environmental conservation.

OBJECTIVE

The goal of Suzano's forest management is to supply the industrial Units with eucalyptus timbers, according to the parameters described in the following, either for short or long terms.

- The goal of Suzano's forest management is to supply the industrial Units with eucalyptus timbers, according to the parameters described in the following, either for short or long terms.
- Availability and rational use of areas for the cultivation of eucalyptus through directives and procedures for the purchase and lease of land.
- Development of new genetic material and monitoring of soil nutritional levels, pests and others, defined in operational routines and specific research projects.
- Standardization, reporting and continuous improvement of procedures related to seedling production, implementation, restoration, forestry practices, construction and conservation of roads, harvesting, and transportation of forestry products.

- Outlining of programs concerning the environment, healthcare and safety at work, as well as socioenvironmental aspects, always in compliance with the applicable law.

COMPLIANCE WITH THE LAW

The Suzano company periodically updates and monitors compliance with current and applicable environmental, labor, and tax regulations related to its activities. This is based on preliminary assessments conducted by a legal consulting firm.

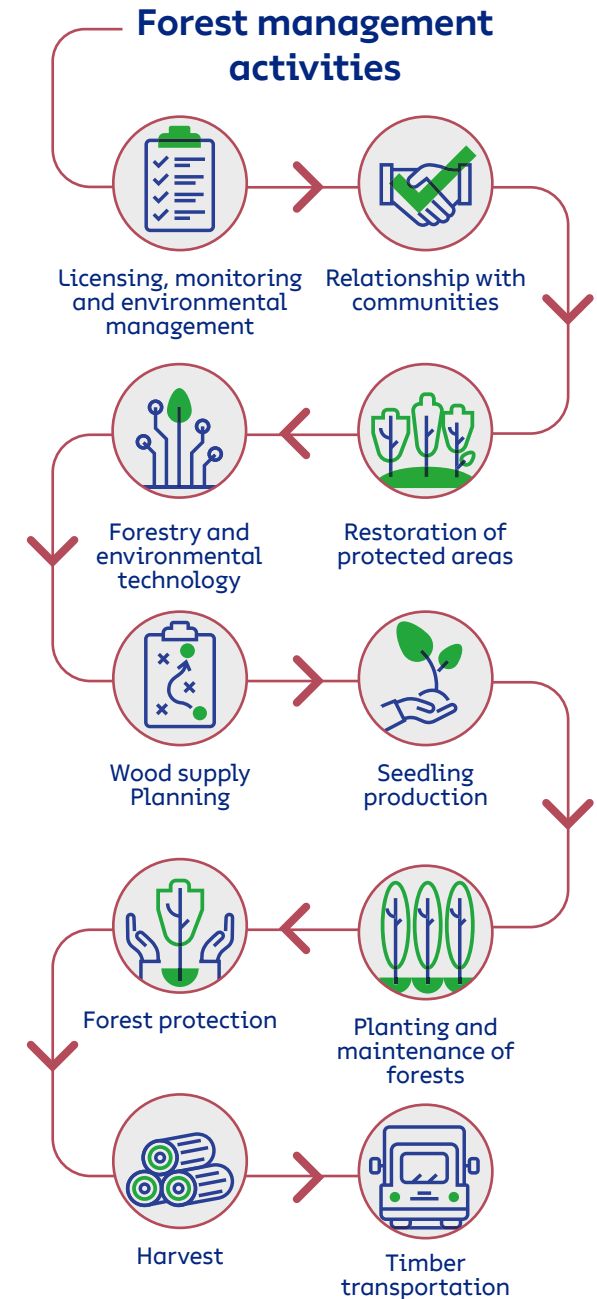
MANAGED FOREST RESOURCES

To supply the demands of the industry for eucalyptus timbers, we rely on crops of the genus *Eucalyptus*, which encompasses more than 600 species that are adapted to many different soil and weather conditions. Eucalyptus originates from Australia and Indonesia. It was chosen due to its higher potential for timber production for pulp when compared with other forestry species and to its adaptability to the environmental conditions in Brazil, including soil and weather.



The eucalyptus

- It is an exotic species (non-native), like coffee, corn, soy and sugar cane and several other crops widely planted throughout the country.
- If managed properly, water consumption is similar to that of native forests and their roots stay away from the water table.
- The eucalyptus takes approximately seven years to harvest and can be cropped in low fertility soils.
- If managed properly, the eucalyptus contributes to the protection and conservation of biodiversity, as observed in the results of biodiversity monitoring in Suzano's areas.
- It captures carbon dioxide (CO₂) from the atmosphere, thus helping to reduce the effects of climate change and to maintain important environmental services to society, such as water resources.





Research and innovation

Suzano maintains advanced Technology Centers that develop studies and research on forestry and industry.

These activities aim to a consistent enhancement of its operations and technological innovations, focusing on the company's sustainability.

The Research and Innovation department focuses primarily on Genetic Improvement and Genomics, Forest Protection, Forest Management, Eco-physiology, and Biotechnology. It defines forest management models to sustain the increase in forest biomass productivity.

Suzano's crops are mostly formed by hybrids obtained from the crossbreeding of *Eucalyptus grandis* and *Eucalyptus urophylla*.

Those species were selected following several cycles of improvement and research because they are better adapted to the local soil and weather conditions. Currently, the tree is harvested in six years in average, varying from five to seven years. After the first harvest, the area is managed for a new planting or for regrowth.

PARTNERSHIPS

Suzano develops studies and research in collaboration with outstanding public and private institutions in Brazil and abroad. All projects and activities seek to meet market and operational demands, legal requirements, new tendencies, technologies and products of internal research strategies.

As a result, Suzano stands out in developing and recommending new genetic materials, in monitoring and recommending forest management practices and fertilization, in using new technologies in forest protection and more sustainable production practices.

In addition to the results highlighted in forestry, Suzano sustains solid and robust results in the development of Research and Development of the industry and new businesses.



Meet our partners in research and innovation in:
<https://www.suzano.com.br/en/innovation>



FOREST MANAGEMENT



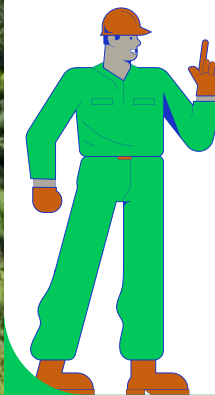


Forest protection

The company continuously monitor for pests, diseases and weed with regular field visits.

The objective is the early detection of pests and weed, and the assessment of the competition level of eucalyptus with weed. The information gathered are used to guide decisions on control and to define the method to be adopted, seeking for the rational use of pesticides.

Suzano also prioritizes the use of biological control agents in occasional pest management, and selection and planting of clones resistant to the main crop diseases, complementing the integrated management.



FOREST INVENTORY

On its first 120 days, first-rotation forests are monitored through a Qualitative Inventory that allows inferences on the quality and homogeneity of the crops. In regrowth forests, performance is monitored at 90 and 180 days after harvesting, also through qualitative forest inventory.

The continuous forest inventory uses sampling techniques to obtain data, and the combination of this data allows the estimation of the volume per hectare and per tree of the plantations. This is one of the pieces of information that are part of the decision-making process about the most opportune moment to carry out the harvest and is also important for the adequate planning of the wood supply for the Industrial Unit.

PLANNING

Suzano carries out long-term forest planning for its forest units through the monitoring and management of plantations and harvests to ensure a consistent supply for manufacturing.

Forest planning takes into account updates to the production system, whether they are economic, socio-environmental or physical, and seeks the best recommendation by maximizing and making the best use of natural resources.

Proper management of planted forests ensures the sustainability of the business, favors the productivity of the plantations, and contributes to the control of diseases and pests, to the preservation of biodiversity, protection of springs and ecosystem services - generating a virtuous cycle.

OPERATIONAL EXCELLENCE

This area studies new technologies focusing in equipment and processes for a continuous improvement of forestry, harvest and logistics activities, working in several fronts such as: Routine management, strategic deployment, education and qualification, innovations, quality program, Digital hub, corporate maintenance and fleet management.



SEEDLING PRODUCTION

The plant nursery is where the eucalyptus seedlings are produced and managed through several stages until reaching the proper size to be planted in the field.

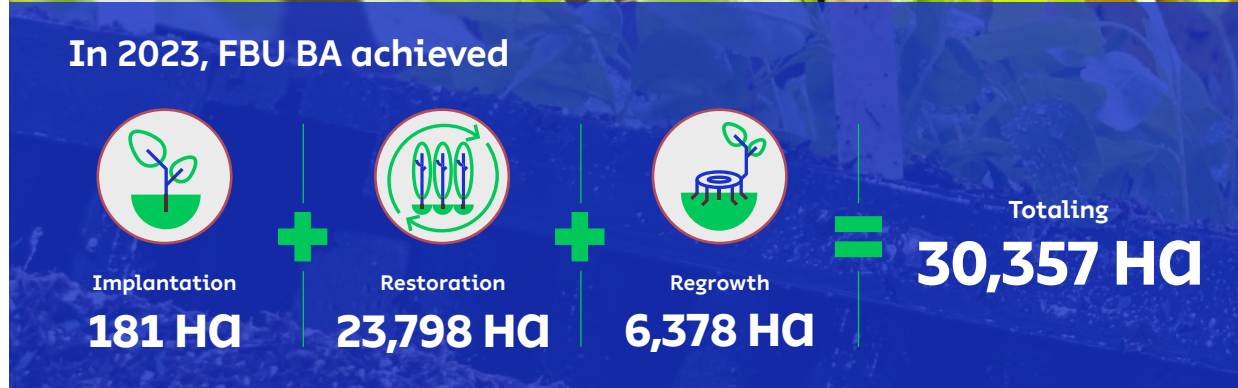
The seedling development time ranges from 90 to 120 days. After 40 days, it is necessary to increase the distance between the seedlings to allow them to grow healthily.

PLANTING

The main activities related to trees planting are: pre-planting mechanized chemical cleaning, mechanized soil tillage, mechanized fertilization, planting, mechanized and semi-mechanized irrigation, and replanting.

Planting can be carried out in reform areas (where an eucalyptus crop already exists), or in implantation areas (where there is no eucalyptus crop). Suzano only implants forest in areas not covered by native forests.

Soil is prepared using minimum tillage, which consists in preparing strips of soil in the planting line. About 70% of the land remains undisturbed, which favors the maintenance of soil characteristics, avoiding erosion and loss of organic matter.



FOREST MAINTENANCE

This stage consists in a set of activities carried out between planting and harvest (5 to 7 years) to ensure growth and productivity.

The main forest maintenance activities are: manual or mechanical mowing, chemical or mechanical weeding, fertilizing, control of leafcutter ants, prevention of forest fire and diseases and pest control.

TIMBER TRANSPORTATION

Forest Logistics main responsibility is to transport timbers from the forest areas to the Industrial Units. The harvested timbers are transported according to the Annual Transportation Planning. Once this process is defined, loading, routes and trucks distribution are determined considering the requirements defined on the area's operational procedures.

The routes for timber transportation are defined in agreement with Suzano's Sustainability sector in order to minimize the possible impacts of forestry activities on the neighboring communities.



THE VOLUME OF TIMBER TRANSPORTED TO THE INDUSTRY IN 2023 WAS **5,897,000 M³**

HARVEST

As soon as the forest reaches its ideal point, timbers are harvested to supply the industrial plant. Harvest encompasses all the processes from tree harvest to the disposition of logs (cutting, forwarding, stacking and fueling), up to the point where they can be transported by trucks.

During harvest, eucalyptus trees are cut toward the center of the plot, avoiding any possible damage to the native vegetation.

TRUCKS EQUIPPED WITH TELEMETRY

FBU BA uses precision technology to manage operations. Our fleet is equipped with telemetry to monitor operations, distribution and positioning of the trucks on the company's roads and farms, control of loading and unloading, and to support our partners in the management of operation safety, such as monitoring the drivers working hours and detecting occasional violations of speed limits.



THE ANNUAL HARVEST VOLUME IN 2023 WAS **7,520,159 M³**



ROAD NETWORK - ROADWAYS

This encompasses all roads, whether within properties or municipal, state, and federal access routes, necessary for the transportation of people, equipment, and inputs crucial for forest management and industrial supply.

Maintenance is determined based on internal criteria to ensure forest operations and prevent erosion, and is carried out on both existing and new roads, which may be constructed to enhance operational quality and safety. Surface water drainage is essential for maintaining dirt roads.

Therefore, we employ appropriate techniques to ensure soil conservation, forest protection, and preservation of natural resources on our properties and adjacent areas. This includes managing rainwater runoff in alignment with soil conservation measures, ensuring greater durability of internal and external roads, and maintaining constant and safe mobility.

ROAD MOISTENING

Firebreaks are maintained to prevent fires from high-risk areas such as highways and railways, and to ensure access for the Forest Fire Brigade teams.

Along the wood transport routes, we carry out roadbed moistening near communities, villages, and residences to mitigate dust formation caused by truck traffic.

Water collection for the road moistening is granted by the competent bodies.

ROAD SAFETY

Health and safety are the company's permanent commitment. Suzano maintains a set of rules that guides its employees and the carriers' employees into safer driving habits, protecting everyone's lives.



HEALTH AND SAFETY
ARE THE COMPANY'S
PERMANENT
COMMITMENT



Forest integrity

Suzano's team of professionals involved in the productive processes of forestry focus largely on prevention and control of wildfires.

The company provides ongoing training to its Forest Fire Protection teams, which monitor the company's areas and are able to act in support of firefighting on neighboring farms.

We carry out Forest Protection work along with the competent authorities, aiming to reduce the Forest Fire incidents, as well as other issues found in our premises. Forest integrity.

To maintain our forest crops and conservation areas, we rely on the daily monitoring of the Property Surveillance Staff and cameras to indicate problems and fires.

The Brigade members, who work in the planting and preservation areas, are professionals trained and qualified to carry out forest firefighting and silvicultural work. The program's premise is to act preventively in monitoring forests and to provide a prompt response to forest fire occurrences.



AT UNF BQ, MONITORING IS CARRIED OUT WITH **23 TOWERS** EQUIPPED WITH MOBILE AND FIXED CAMERAS AND **1 24-HOUR CONTROL CENTER**



Safety and protection of Forest Areas

Suzano has an electronic forest fire monitoring system implemented in Bahia and Minas Gerais with monitoring towers with 360° view operated by one central station. This system covers over 95% of the forest area, including crop and preservation areas.



Location of teams



Night incident detection



Daylight incident detection



Detection of pests and diseases



THE GUARDIÕES DA FLORESTA PROGRAM

RAISES AWARENESS AMONG EMPLOYEES AND COMMUNITY ABOUT THE IMPACTS AND DANGERS OF FOREST FIRES

ENVIRONMENTAL MANAGEMENT

10

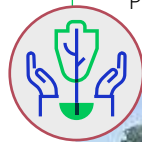


High Conservation Value Areas

The term High Conservation Value Areas (HCVA) was created along with the standards for the forest management certification and refers to areas with important features for the conservation of biodiversity and to maintain people’s quality of life.

Examples are: native forests that house endemic (that can’t be found anywhere else) or endangered animals and plants, and forests that provide essential resources for the local population.

Suzano uses this concept to guide its conservation efforts, evaluating the HCVA present in its areas according to the following attributes: biological, ecological, social or cultural values considered notably meaningful or of extreme importance at the national, regional or global levels. Those are the values that need protection.



In the first semester of 2021, the FBU adjusted the methodology for the evaluation of HCVA attributes 1 to 4 (environmental attributes), through a corporate technical task group for biodiversity using as reference the criteria adapted from the Guide for Good Practices to evaluate High Conservation Value, developed by the ProForest Network.

In the first semester of 2021, the FBU adjusted the methodology for the evaluation of HCVA attributes 1 to 4 (environmental attributes), through a corporate technical task group for biodiversity using as reference the criteria adapted from the Guide for Good Practices to evaluate High Conservation Value, developed by the ProForest Network.

During the process of reviewing the environmental HCVA (1 to 4), Suzano consulted with the stakeholders, according to the criteria for the identification of HCVA in order to validate the defined threats and measures for protection, conservation and monitoring for the maintenance of these areas. During the development of the diagnosis, researchers and specialists were consulted about the items in their areas of expertise in order to provide Suzano with the security to make decisions about the proper identification and management for HCVA.

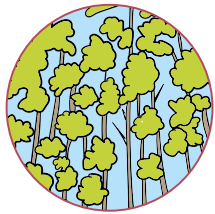
6 ENVIRONMENTAL HCVA WERE IDENTIFIED AT FBU MA AREA, TOTALLING **11,800 HECTARES**



CONSULTATION WITH STAKEHOLDERS

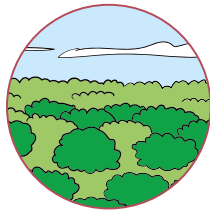
Suzano consulted with stakeholders, in accordance to the criteria for HCVAs and SML (Special Meaning Localities), to develop management regimes for the maintenance of HCVAs and SML and assess their efficacy.

The key to define a given area as HCV is identifying if it fits one or more attributes as described below:



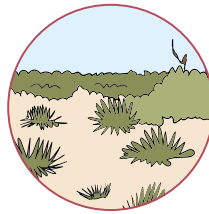
HVC 1

Areas containing significant amount of value for biodiversity.



HVC 2

Extensive and preserved areas of native vegetation, of global, national or regional relevance for biodiversity.



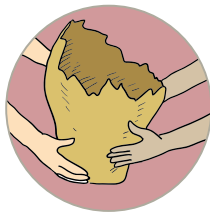
HVC 3

Areas that are inserted in or contain rare, threatened or endangered ecosystems.



HVC 4

Areas capable of promoting environmental services in critical situations, such as the protection of water basins and erosion control.



HVC 5

Important areas to meet the basic needs of communities, such as those related to health and subsistence.

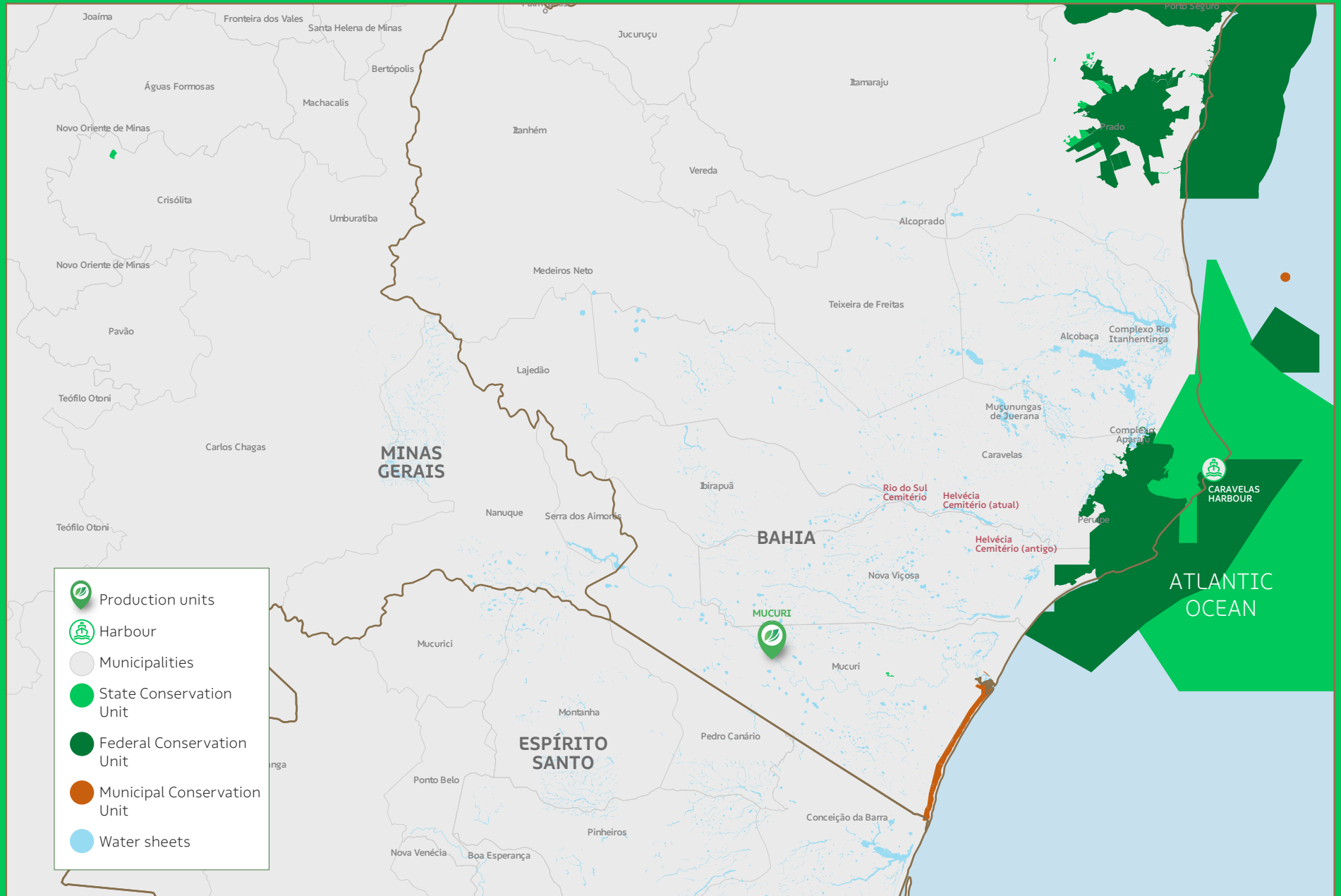


HVC 6

Important areas for the traditional cultural identity of communities.



Conservation Units map



HIGH CONSERVATION VALUES	CHARACTERISTICS	RISKS AND THREATS	IMPACT	PROTECTION MEASURES	MONITORING
HVC 5	Essential areas and resources to meet the local communities, indigenous peoples or traditional peoples basic needs	<ul style="list-style-type: none"> a. Illegal practices (wildfires, native wood and plants theft, deforestation for alternative use of soil, mineral theft, trespassing, among others) b. Deforestation c. Operational damage d. Loss of access to cultural values and resources 	<ul style="list-style-type: none"> a. Loss of biodiversity; b. Scarcity of resources for extraction; c. Reduction in water availability. 	<ul style="list-style-type: none"> a. Patrimonial surveillance; b. Implementation of preventative measures (ex. maintenance of roads and firebreaks) and of firefighting. c. Environmental education actions d. Access granting guarantee e. Placement of signposts f. HCVA identification or SML g. Open dialogue with the community h. Identification on the operation maps i. Maintenance of physical structures 	Anthropic actions and community opinion: Quarterly
HVC 6	Areas with special cultural, archaeological, or historical meaning at the global or national level and/or of critical importance for the traditional culture of local communities, indigenous peoples or traditional peoples.	<ul style="list-style-type: none"> a. Patrimonial damage and depreciation b. Operational damage c. Water availability d. Fire e. Loss of access to cultural values and resources 	<ul style="list-style-type: none"> a. Devaluation or loss of cultural identity; b. Deterioration of the cultural, historical or archaeological heritage; c. Disfigurement of places with cultural traditional, ecological, or religious importance 		
SML (Special Meaning Location)	It is a natural or anthropic area or an area with infrastructure used by communities for cultural or religious events.				Anthropic actions and community opinion: Biannually



HIGH CONSERVATION VALUES	CHARACTERISTICS	RISKS AND THREATS	IMPACT	PROTECTION MEASURES	MONITORING
HVC 5	Essential areas and resources to meet the local communities, indigenous peoples or traditional peoples basic needs	<ul style="list-style-type: none"> a. Illegal practices (wildfires, native wood and plants theft, deforestation for alternative use of soil, mineral theft, trespassing, among others) b. Deforestation c. Operational damage d. Loss of access to cultural values and resources 	<ul style="list-style-type: none"> a. Loss of biodiversity; b. Scarcity of resources for extraction; c. Reduction in water availability. 	<ul style="list-style-type: none"> a. Patrimonial surveillance; b. Implementation of preventative measures (ex. maintenance of roads and firebreaks) and of firefighting. c. Environmental education actions d. Access granting guarantee e. Placement of signposts f. HCVA identification or SML g. Open dialogue with the community h. Identification on the operation maps i. Maintenance of physical structures 	Anthropic actions and community opinion: Quarterly
HVC 6	Areas with special cultural, archaeological, or historical meaning at the global or national level and/or of critical importance for the traditional culture of local communities, indigenous peoples or traditional peoples.	<ul style="list-style-type: none"> a. Patrimonial damage and depreciation b. Operational damage c. Water availability d. Fire e. Loss of access to cultural values and resources 	<ul style="list-style-type: none"> a. Devaluation or loss of cultural identity; b. Deterioration of the cultural, historical or archaeological heritage; c. Disfigurement of places with cultural traditional, ecological, or religious importance 		
SML (Special Meaning Location)	It is a natural or anthropic area or an area with infrastructure used by communities for cultural or religious events.				Anthropic actions and community opinion: Biannually



Biodiversity management

Suzano understands Biodiversity Monitoring as the tracking of development and changes in components and parameters of the landscapes and communities of fauna and flora, aiming to assess the effects of forest management on the environment.

FAUNA

In 2023, fauna monitoring was carried out for the *Rio Itanhentinga* and *Alcoprado* HCVAs, as defined in the monitoring schedule.

In the Mucuri unit, 6 HCVAs are part of the biodiversity monitoring program: Alcoprado, Complexo Aparaju, Complexo Rio Itanhentinga, Fábrica, Muçunungas de Juerana and Peruípe. In addition to that, four farms are monitored (three in the state of Minas Gerais and one in the state of Bahia) regarding compliance with the specific condition for the License for Operation of the forestry entrepreneurship.

Birds accounted for 457 species in the FBU's database. Among those, 29 are considered threatened at the regional, national and/or global level, and 79 are endemic.

Mammals of medium and large size sum up 64 species, of which 15 are threatened and 12 endemic.



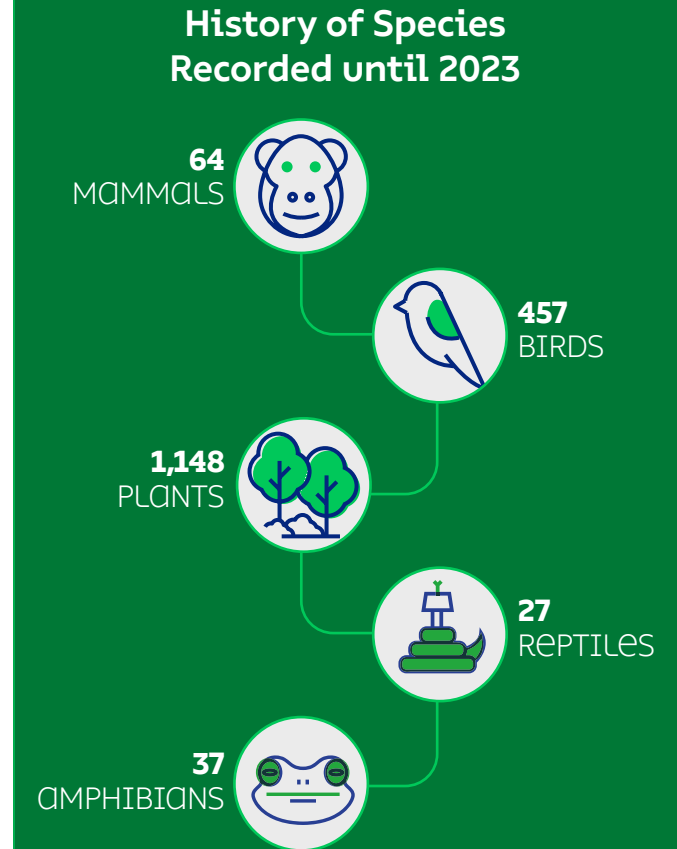
Campo troupial (*Icterus jamacaii*)



Black-throated saltator (*Saltatricula atricollis*)



Blue-crowned trogon (*Trogon curucui*)



FLORA

In the monitoring of flora, 1,158 species were logged historically, of which 146 are considered threatened. In 2023, monitoring was carried out at the Rio Itanhentinga HCVA complex, as planned in the biodiversity monitoring schedule (every four years for flora).

With the vegetation and fauna inventory in the company's area, it's possible to develop recommendations to keep and/or improve the conservation of species, such as environmental restoration of priority areas and protection against fire. Continuous monitoring generate knowledge that base the improvement of environment management techniques, contributing to the local biodiversity preservation.

The following chart shows the species according to the level of endangerment as per the IUCN's Red List of Threatened.



NUMBER OF THREATENED SPECIES IDENTIFIED IN THE LAST MONITORING
33 SPECIES OF FLORA
10 SPECIES OF BIRDS
4 SPECIES OF MAMMALS

Brasiliopuntia brasiliensis



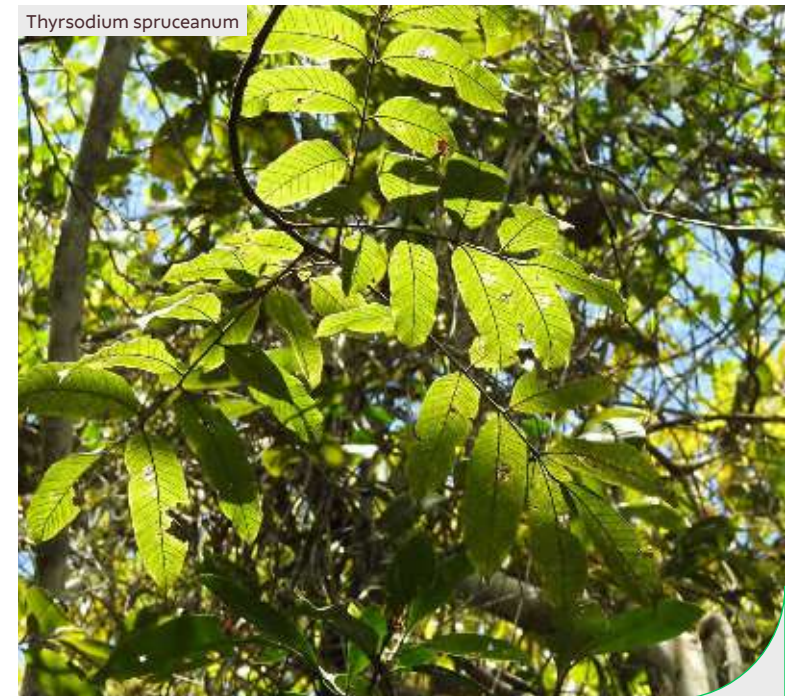
Endangered species identified in the monitoring of fauna and flora at FBU BA

GROUP	FAMILY	SPECIES	COMMON NAME	CITES	IUCN	ICMBIO	BA	MG
Birds	Psittacidae	<i>Amazona rhodocorytha</i>	Red-browed amazon	I	VU	VU	EN	EN
	Psittacidae	<i>Amazona vinacea</i>	Vinaceous-breasted amazon	I	EN	VU	CR	VU
	Psittacidae	<i>Amazona farinosa</i>	Mealy amazon	II	-	-	VU	CR
	Strigidae	<i>Pulsatrix perspicillata</i>	Spectacled owl	-	-	CR	-	-
	Thamnophilidae	<i>Myrmoderus ruficauda</i>	Scalloped antbird	-	EN	EN	EN	CR
	Thraupidae	<i>Sporophila angolensis</i>	Chestnut-bellied seed finch	-	-	-	-	CR
Mammals	Atelidae	<i>Alouatta guariba guariba</i>	Northern brown howler	-	CR	CR	CR	CR
	Cebidae	<i>Sapajus robustus</i>	Crested capuchin	-	EN	EN	EN	EN
	Felidae	<i>Leopardus wiedii</i>	Margay	I	NT	VU	EN	EN
	Felidae	<i>Herpailurus yagouaroundi</i>	Jaguarundi	I	LC	VU	VU	-
	Felidae	<i>Leopardus pardalis</i>	Ocelot	I	LC	-	VU	VU
	Felidae	<i>Puma concolor</i>	Puma	I	LC	-	VU	VU
	Mustelidae	<i>Lontra longicaudis</i>	Long-tailed otter	I	NT	-	VU	VU
	Tayassuidae	<i>Dicotyles tajacu</i>	Collared peccary	II	LC	-	-	VU
	Plants	Annonaceae	<i>Hornschurchia myrtillosa</i>	-	-	VU	VU	-
Apocynaceae		<i>Rhamnidium glabrum</i>	Casca-d'anta	-	-	EN	-	-
Apocynaceae		<i>Aspidosperma parvifolium</i>	Guatambú-branco	-	-	EN	-	-
Arecaceae		<i>Melanopsidium nigrum</i>	-	-	-	EN	-	-
Arecaceae		<i>Syagrus macrocarpa</i>	-	-	EN	EN	-	-
Asteraceae		<i>Mimosa caesalpiniiifolia</i>	-	-	VU	-	-	-
Asteraceae		<i>Plathymenia reticulata</i>	-	-	VU	-	-	-
Bignoniaceae		<i>Handroanthus riococensis</i>	-	-	-	EN	-	-
Bignoniaceae		<i>Handroanthus arianeae</i>	-	-	-	EN	-	-
Bignoniaceae		<i>Paratecoma peroba</i>	-	-	-	EN	-	-
Bignoniaceae		<i>Handroanthus cristatus</i>	-	-	-	EN	-	-
Bignoniaceae		<i>Handroanthus serratifolius</i>	Ipê-roxo, pau-d'arco-roxo	-	EN	-	-	-
Boraginaceae		<i>Cordia gardneri</i>	-	-	EN	EN	-	-
Bromeliaceae		<i>Stigmatodon goniorachis</i>	-	-	-	EN	-	-
Capparaceae		<i>Colicodendron bahianum</i>	-	-	VU	VU	-	-
Caricaceae		<i>Joannesia princeps</i>	Mamão-jacarátia-mirim	-	VU	-	-	-


 South American tapir (*Tapirus terrestris*)

 Southern tamandua (*Tamandua tetradactyla*)


GROUP	FAMILY	SPECIES	COMMON NAME	CITES	IUCN	ICMBIO	BA	MG
Plants	Celastraceae	<i>Monteverdia samydidiformis</i>	Casca-rosada	-	-	CR	-	-
	Clusiaceae	<i>Trichilia casaretti</i>	Guanandi-amarelo	-	VU	-	-	-
	Dioscoreaceae	<i>Dioscorea loefgrenii</i>	-	-	-	VU	-	-
	Fabaceae	<i>Inga cabelo</i>	Ingá-cabelo	-	EN	-	-	-
	Fabaceae	<i>Swartzia alternifoliolata</i>	-	-	EN	EN	-	-
	Fabaceae	<i>Machaerium villosum</i>	Caviúna	-	VU	-	-	-
	Fabaceae	<i>Apuleia leiocarpa</i>	Guarapa	-	-	VU	-	-
	Fabaceae	<i>Inga hispida</i>	Ingá-pau	-	VU	-	-	-
	Fabaceae	<i>Dalbergia nigra</i>	Jacarandá-da-bahia	-	VU	VU	-	-
	Lauraceae	<i>Ocotea beulahiae</i>	-	-	-	VU	-	-
	Lauraceae	<i>Ocotea mosenii</i>	-	-	-	VU	-	-
	Lecythidaceae	<i>Couratari asterophora</i>	-	-	CR	-	-	-
	Lecythidaceae	<i>Eschweilera alvimii</i>	-	-	VU	EN	-	-
	Lecythidaceae	<i>Couratari asterotricha</i>	Imbirema	-	CR	EN	-	-
	Lecythidaceae	<i>Cariniana legalis</i>	Jequitibá-rosa	-	VU	EN	-	-
	Malvaceae	<i>Pseudoxandra spiritus-sancti</i>	Imbiruçu	-	EN	EN	-	-
	Marantaceae	<i>Saranthe composita</i>	-	-	-	VU	-	-
	Melastomataceae	<i>Micropholis gardneriana</i>	-	-	VU	-	-	-
	Meliaceae	<i>Cedrela fissilis</i>	Cedro	-	VU	VU	-	-
	Meliaceae	<i>Trichilia silvatica</i>	Peito-de-pombo	-	VU	-	-	-
	Myristicaceae	<i>Virola bicuhyba</i>	-	-	-	EN	-	-
	Myrtaceae	<i>Eugenia guanabarina</i>	-	-	-	CR	-	-
	Myrtaceae	<i>Neomitranthes stictophylla</i>	-	-	-	EN	-	-
	Myrtaceae	<i>Eugenia pruinosa</i>	-	-	-	EN	-	-
	Myrtaceae	<i>Myrcia neoestrellensis</i>	-	-	CR	-	-	-
	Myrtaceae	<i>Campomanesia laurifolia</i>	-	-	EN	-	-	-
	Myrtaceae	<i>Myrcia eugenioides</i>	-	-	VU	-	-	-
	Myrtaceae	<i>Myrcia lacunosa</i>	-	-	VU	-	-	-
	Myrtaceae	<i>Eugenia pisiformis</i>	-	-	VU	-	-	-
	Myrtaceae	<i>Campomanesia espiritosantensis</i>	Araçá-miúdo	-	VU	EN	-	-
Myrtaceae	<i>Myrcia guianensis</i>	Cambuí	-	VU	-	-	-	
Myrtaceae	<i>Myrcia obversa</i>	Guamirim	-	VU	-	-	-	


 Minute hermit (*Phaethornis idaliae*)


Thyrsoodium spruceanum

GROUP	FAMILY	SPECIES	COMMON NAME	CITES	IUCN	ICMBIO	BA	MG
Plants	Poaceae	<i>Melanoxylon brauna</i>	-	-	-	VU	-	-
	Primulaceae	<i>Naucleopsis oblongifolia</i>	-	-	VU	-	-	-
	Proteaceae	<i>Euplassa cantareirae</i>	-	-	-	EN	-	-
	Proteaceae	<i>Euterpe edulis</i>	-	-	-	VU	-	-
	Rubiaceae	<i>Alseis involuta</i>	-	-	-	EN	-	-
	Rutaceae	<i>Metrodorea maracasana</i>	-	-	-	EN	-	-
	Rutaceae	<i>Esenbeckia leiocarpa</i>	<i>Canela-de-cotia</i>	-	VU	-	-	-
	Rutaceae	<i>Zeyheria tuberculosa</i>	<i>Mamica-de-cadela</i>	-	VU	-	-	-
	Salicaceae	<i>Banara brasiliensis</i>	<i>Natalina</i>	-	VU	-	-	-
	Sapindaceae	<i>Toulicia stans</i>	-	-	CR	VU	-	-
	Sapotaceae	<i>Pouteria pachycalyx</i>	-	-	CR	-	-	-
	Sapotaceae	<i>Pouteria butyrocarpa</i>	-	-	EN	EN	-	-
	Sapotaceae	<i>Chrysophyllum splendens</i>	<i>Bapeba-pedrim</i>	-	VU	-	-	-
	Smilacaceae	<i>Smilax spicata</i>	-	-	-	EN	-	-
	Solanaceae	<i>Sorocea guilleminiana</i>	<i>Folha-de-prata</i>	-	VU	-	-	-
	Styracaceae	<i>Swartzia linharensis</i>	-	-	-	EN	-	-
	Trigonaceae	<i>Trigoniodendron spiritusanctense</i>	-	-	-	EN	-	-



Black-fronted piping guan (*Aburria jacutinga*)



White-headed marmoset (*Callithrix geoffroyi*)

Monitoring of water resources

Suzano assesses the effects of its crops on the quality and quantity of water resources through a representative monitoring network according to the scale and intensity of plantings.

One of the mechanisms applied for the maintenance of water resources is based on natural control developed cross evolutionary processes of the landscape. One example is the well-known relationship between forest coverage and water resources, mainly on Permanent Preservation Areas, aiming to comply with the legislation and the conditionals of forest operation licenses.

From the lab results it is possible to build an assessment of the monitored areas, in order to set a possible relation between the eucalyptus crops and surface and underground water conditions located in its area of influence.

This program's execution consists of two monitoring campaigns. These campaigns gather quali-quantitative data from surface and underground water in areas near eucalyptus crops using in situ measurements of some parameters and collecting samples for lab analysis. Studies on water quality and flow show no negative impact to the environment associated with the eucalyptus crops.

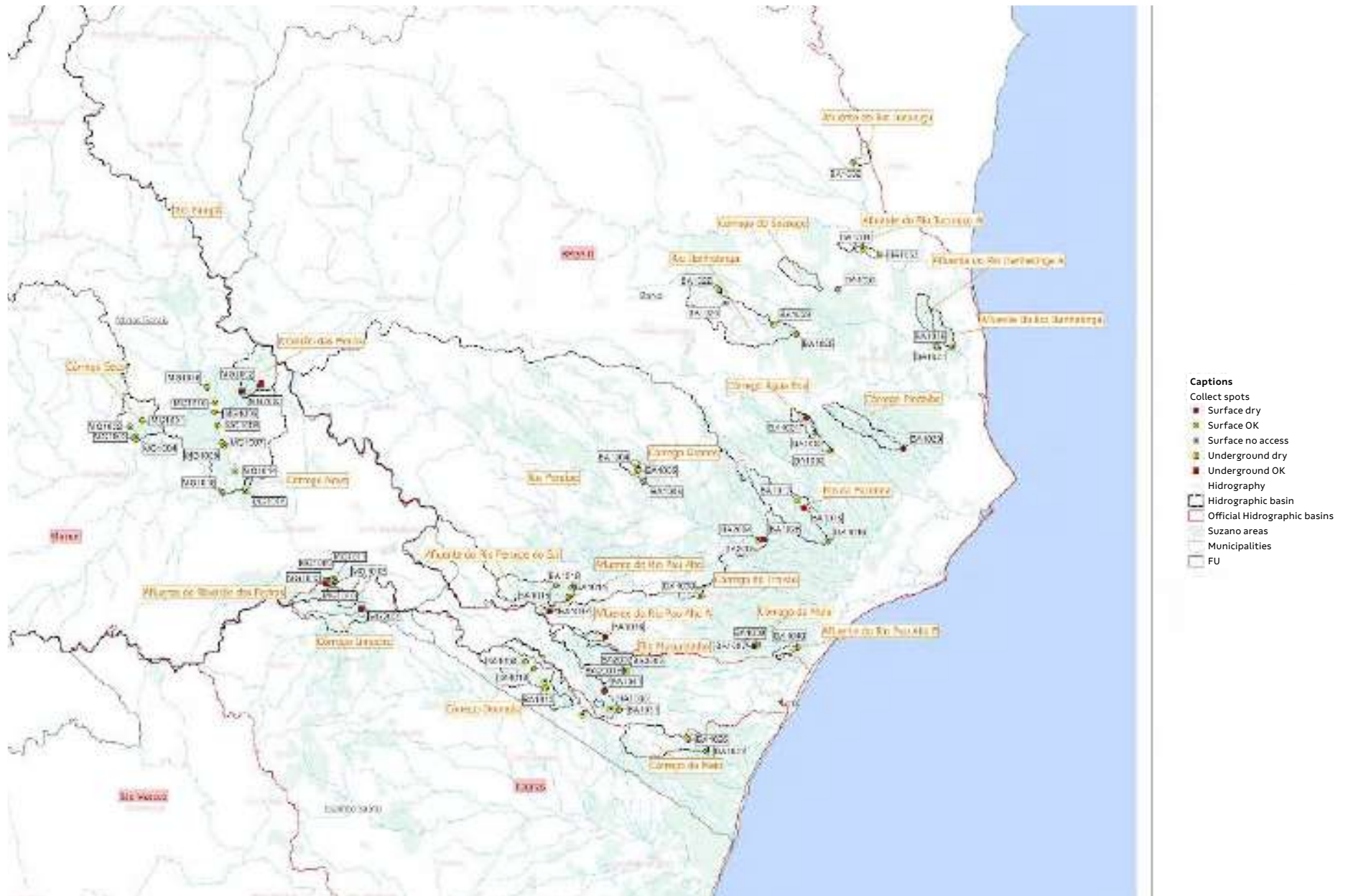
Below there's a map of the official water basins, sub-basins and monitored sampling spots in the states of Bahia and Minas Gerais.



IN 2023, WERE
MONITORED
**46 SPOTS IN BAHIA
AND 22 IN MINAS
GERAIS, IN 27 BASINS**



Location of microbasins (BA and MG) and water quality monitoring spots



Environmental aspects and impacts of the Forest Management

Suzano is committed to adopting the best environmental practices to promote, in an innovative way, sustainable development.

Focusing on the sustainability of its processes, the company uses managerial instruments and tools that provide better environmental quality for its forestry activities. Managing environmental aspects and impacts, the FBU defines methodologies for the identification, assessment and control of environmental aspects and impacts (of its services, activities and products), seeking to minimize all possible adverse impacts and strengthen the beneficial ones.

Environmental aspects and impacts of forestry processes are identified and assessed considering the following social and environmental safeguards, among others:

- The new laws that apply to the business;
- Compliance with the current law;
- Identified regulatory marks;
- Obligations resulting from agreements and voluntary certifications;
- Change management for new products, services, activities and equipment.

Once identified the environmental aspects and impacts, mitigation, control and monitoring actions are established.

Examples of adverse impact

	<p>WATER CONSUMPTION</p>	<p>Environmental impact</p> <p>Scarcity of water resources.</p>	<p>Mitigation or enhancement measure</p> <ul style="list-style-type: none"> • Physical control: Water meter and irrigation controller. • Limits of water use rights.
	<p>RISK OF FIRE OUTBREAK</p>	<p>Environmental impact</p> <p>Alteration in the physical quality of soil.</p>	<p>Mitigation or enhancement measure</p> <p>Fire control systems and fire brigade teams.</p>

Examples of benefic impact

	<p>CARBON ABSORPTION</p>	<p>Environmental impact</p> <p>Reduction of greenhouse effect.</p>	<p>Mitigation or enhancement measure</p> <p>CO₂ sequestration by forestry production and conservation areas.</p>
	<p>ENVIRONMENTAL SERVICES</p>	<p>Environmental impact</p> <p>Biodiversity recovery.</p>	<p>Mitigation or enhancement measure</p> <ul style="list-style-type: none"> • Restoration of degraded areas. • Conservation of PPA and LR.

Ecological Restoration

As part of its commitment with the environment, Suzano promotes restoration actions on its Permanent Preservation Areas, Legal Reserves and in all states where it operates. It is one of the largest Brazilian restoration programs, encompassing two biomes considered as hotspots of biodiversity - the Atlantic forest and Cerrado - and the transition area Cerrado - Amazon forest.

To emphasize this commitment, the company is a signatory of the Pact for the Restoration of the Atlantic forest, an initiative that aims to restore 15 million hectares in the country until 2050.

In Bahia and Minas Gerais, 1,067 hectares were implanted in 2023. In addition to the implantation activities, 7,553 hectares of maintenance were carried out in these states, including ant control, weeding, chemical weeding and other activities.

Regarding the activities to eliminate exotic and invasive species, operations were carried out in 81.96 hectares, including control in forest areas and pastures to be recovered, to open fronts for implementation and maintenance replanting. Adaptive management techniques were also carried out in 189.46 hectares.

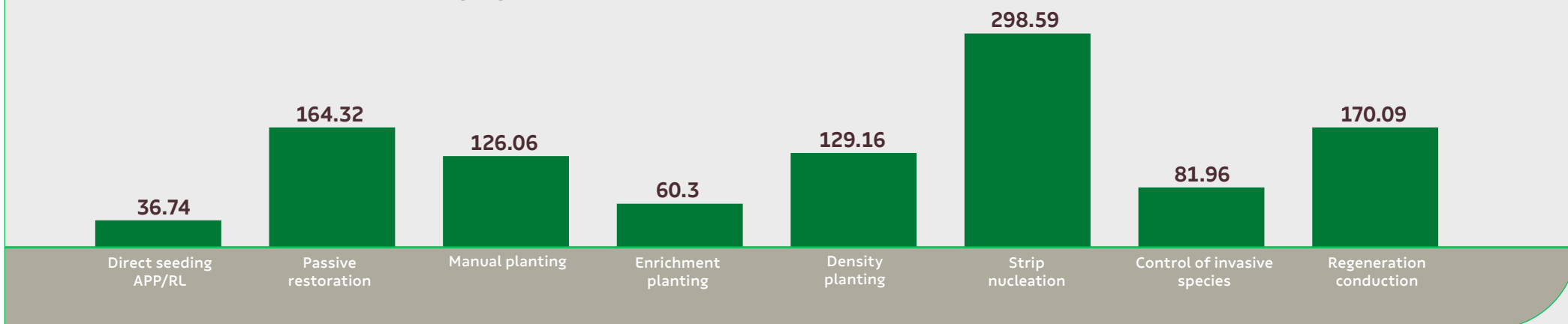
All implemented areas are monitored to evaluate the success of the adopted techniques and indicate the need for management, aiming at ecological succession and consequent recovery.



AT FBU BA WE IMPLEMENTED **1,067 HECTARES** OF ECOLOGICAL RESTORATION IN 2023



Restoration at FBU BA in 2023 (ha)



Solid waste management

Suzano's Solid Waste Management adopts practices to classify, separate, store, collect, transport, and dispose of the waste produced in forestry operations and activities.

With this, we aim to:

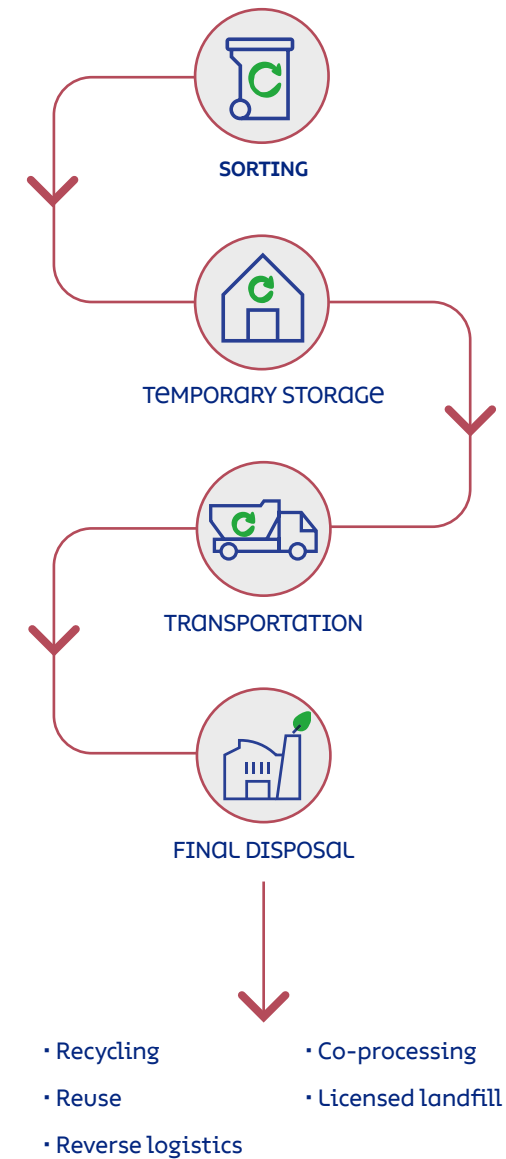
- Reduce waste production;
- Reuse residues, optimizing its use before disposal;
- Recycle residues;
- Adequately process waste;
- Ensure the proper disposal.

Waste management in the forest areas is performed according to the effective legislation.

Waste is forwarded according to its classification to recipients that undergo a rigid process of evaluation and approval. Class I waste (Hazardous) might be sent for co-processing, recycling and licensed Class I landfills. Class II waste (non-Hazardous) are sent for recycling or licensed landfills, depending on its physical characteristics.

Packages of pesticides used in forestry operations are sent to licensed Empty Crop Protection Packages Receiving Units for reverse logistics.

Waste management steps



Ecological training

The Sustainability Education Program disseminates environmental information and practices to raise awareness among its participants about sustainable attitudes and behaviors capable of transforming the socioenvironmental reality.

The Environmental Training Program disseminates environmental information and practices to raise awareness among its participants about sustainable attitudes and behaviors capable of transforming the socio-environmental reality. To reach both internal and external audiences, the Program is divided into distinct activities and projects aligned with each reality.

It is an educational and preventive initiative, designed to meet the conditions of the environmental license. Its focus encompasses students from the municipal education network in the states of Bahia and Minas Gerais, as well as Suzano's own and outsourced workers.

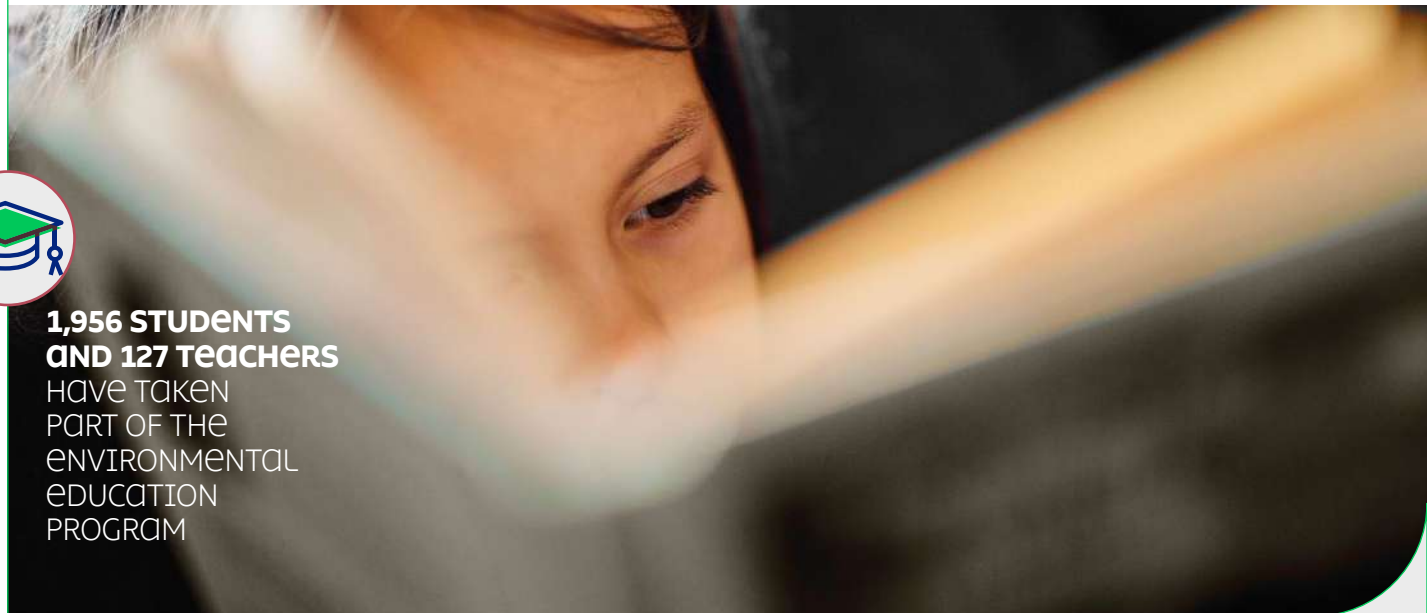
With the development of the 2023 Environmental Training Program (PEA), remarkable results were achieved, positively impacting 1,956 students and 127 teachers distributed across 10 municipalities in Bahia and 2 municipalities in Minas Gerais.

These numbers demonstrate the engagement and breadth of the program, which promotes environmental awareness, values sustainability, and strengthens socio-environmental practices in all regions involved. In parallel, throughout the year, various dynamics and activities were carried out, totaling 34 schools and over 60 visits, with emphasis on actions such as donations of seedlings, aiming not only to foster environmental awareness but also to contribute to the reforestation of degraded areas.

All these experiences promoted a dynamic and participatory educational environment, consolidating the importance of sustainability and care for the environment within the school environment. In short, the intersection between quantitative results and effective practices reflects the program's full commitment to environmental education and sustainable development.



**1,956 STUDENTS
AND 127 TEACHERS**
HAVE TAKEN
PART OF THE
ENVIRONMENTAL
EDUCATION
PROGRAM



These actions are fundamental to fulfilling environmental requirements and to developing a responsible and harmonious relationship with the communities and the environment impacted by operational activities.

Regarding the internal environmental education program, a comprehensive series of training sessions was conducted throughout 2023, encompassing both in-person and online formats. Furthermore, we trained over 130 Sustainability Transformation Agents, with the general objective of contributing solutions, through sustainability education, to the challenges faced by society and the company.

37 ENVIRONMENTAL TRAINING SESSIONS WERE HELD IN 2023, WITH 130 AGENTS TRAINED

The specific objectives of the Program are:

- To continuously incorporate the concept and good practices of sustainability in the company and its value chain;
- To foster the transition to sustainable societies through training processes, both inside and outside the company;
- To make sustainability education structural and permanent by strengthening social participation.

In total, 37 training sessions were held throughout the year. These initiatives aim to strengthen engagement and awareness regarding sustainable practices within Suzano.

PEA EXTRACTIVIST

The Environmental Education Program (PEA) and the Extractive Social Communication Program (PCS) are initiatives aimed at traditional communities in the municipalities of Caravelas, Alcobaça, and Nova Viçosa (BA). In 2023, several activities focused on raising awareness and promoting environmental conservation in the region were implemented.

The actions developed by the PEA included lectures, educational campaigns, and training sessions focused on environmental awareness, promoting sustainable practices for the protection of local ecosystems.



RECOGNITION AND RESPECT FOR OUR PROFESSIONALS



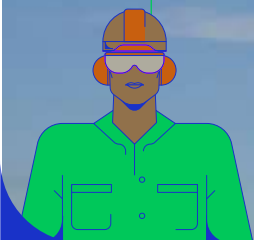
Safety, Health and Quality of Life

Appreciation and respect for professionals are commitments of the company. The management of health and safety is one of Suzano's main values and encourages everyone to take responsibility for safety, sparing no resources to further reduce accident rates.

The Occupational Health and Safety Management Program guides the registration of incidents, making available the necessary resources for the development of awareness campaigns, which make a great contribution to the quality of life of employees, their families, and the communities close to their areas of operation.

The verification and assurance of health and safety conditions at work, as well as the use of adequate safety devices, are also covered by the collective agreement signed with the employees' representative entities. All occurrences related to the health and safety of professionals are registered and monitored based on a corporate management standard, including the communication of accidents, incidents, and occupational illnesses.

The main programs developed by Suzano to ensure safety at work involve the preparation of documents, which seek to identify the risks of accidents, such as the PRA (Preliminary Risk Analysis), OPA (Positive Activity Observation), Safety in the Area and LTF (Forest Work Release).



11. RECOGNITION AND RESPECT FOR OUR PROFESSIONALS

The main programs developed by Suzano to ensure safety at work involve the preparation of documents that seek to identify the risks of accidents such as the Preliminary Risk Analysis (APR), Work Risk Observation (OPA), Safety in the Area, and work permits.

All activities are checked and monitored for below standard conditions and practices (*Fique Alerta / DNA - De Olho na Área*) and approached by programs as the Program for Medical Control of Occupational Health. The system is composed of different groups and committees that help monitoring and provide guidance on safety and health conditions.

The initiatives aim to establish and maintain a responsible and transparent relationship with all employees in order to adopt the best existing practices in the industrial, forest and administrative units. This process helps to build Suzano's reputation among its key relationship public and seeks to explore synergies and to better employ our professional talents.

Safety performance of FBU BA Forest operations

SAFETY INDICATORS	2023
Rate of accidents (Own employees and third parties)	0.97
Severity rate (Own employees and third parties)	7
Perception on the degree of knowledge on the Safety Management Integrated System	98%



Workforce Qualification

The company contributes to the generation of local jobs by improving the economic activities in the region of operation.

Our own and outsourced employees receive personalized service and professional development opportunities. All collaborators take part in training activities that address not only technical aspects of the operation, but also subjects such as ethics and human rights. The welfare of every employee and level of satisfaction with the company are also closely monitored through organizational surveys.

The company conducts a structured process of integration of new employees and permanent vendors that aims to facilitate their adaptation into the work environment, the organizational culture, concepts and drivers, environmental conservation, code of conduct, the management system and relationship with stakeholders.

Suzano has a benefits policy aligned to the good practices of the market and to its employees' expectancies. The benefits granted represent a significant value for the company and its employees, and are managed in order to ensure the best quality level and provide comfort and satisfaction.



Jobs creation at FBU BA

Own employees*	1,697
Outsourced employees*	1,880
TOTAL	3,577

**Data relative to Dec/2023*

12

SOCIAL MANAGEMENT





SUZANO

Age ENCGA

Suzano prioritizes clear and straightforward actions toward social and environmental investments.

With this end, the company considers a set of specific actions aimed at the different audiences influenced by its activities.



Management of relationship with stakeholders

Suzano's relationship strategy is to ensure social and business legitimacy through the long-term strengthening of its interaction with neighboring communities and the integration of their interests into forestry business management.

Suzano's relationship with the communities surrounding its operations follows the following approach:



1. Priorization matrix

Process of characterization of the area where Suzano is present to guide the activities with social impact to be adopted in each case. This study provides an assertive guidance for social investment and other actions for local engagement.



2. Engagement

Structured, inclusive and continued relationship, where the company plays the role of a partner to foster the local development. It takes place on the communities most impacted by Suzano's operation.

In rural communities, traditional communities and indigenous peoples, engagement is promoted by programs for income generation such as the *Colmeias* Program, Invitation letters, craftsmanship production chain and in-person meetings.



3. Operational dialogue

It is a channel for direct communication through which the company informs the residents of neighboring communities about the forestry operations scheduled in that region according to an annual planning of activities, and discusses impacts and mitigation actions.

This process also integrates annual visits to ensure a continuous relationship with the neighboring communities.



Management of social impacts

Suzano understands “social impacts in the communities” as any changes (harmful or beneficial) caused entirely or partially by its forestry operations within a radius of three kilometers of its properties or areas leased for eucalyptus production.

The model of social impacts management seeks to eliminate, reduce or compensate the negative impacts through management practices, socioenvironmental investment, and continuous control and mitigation actions.

Despite all measures taken to prevent and mitigate adverse impacts, unpredictable losses and damages can still occur, directly affecting the communities resources or livelihood. In this case, these losses and damages are compensated and mitigated, in common agreement and according to the particularities of each case, in a fair and balanced way.

In the following, examples of adverse social impacts from forestry management and the corresponding mitigation and prevention measures are presented. For conflict resolution, disputes and compensations involving rights of use, possession and control of the land, the company has defined directives that prioritize a friendly and fair solution for the parts.

Examples of adverse social impacts and controls

ACTIVITIES	SOCIAL IMPACTS	PREVENTATIVE AND MITIGATING MEASURES
Application of crop protection products	Inconvenience caused by drift* to neighboring areas	<ul style="list-style-type: none"> • Use of products authorized by the environmental bodies • Signaling of the areas • Training of employees that apply the products • Maintenance of equipment used for the application • Operational dialogue and management of incidents
	Increase in the risk of accidents	<ul style="list-style-type: none"> • Use of up-to-date equipment and trained and qualified teams • Signaling and guidance offered to the community to prevent people from approaching machinery during operation • Operational dialogue and management of incidents
	Change of landscape (visual) and loss of reference	<ul style="list-style-type: none"> • Placement of warning signs
Forest harvest	Noise	<ul style="list-style-type: none"> • Negotiation of time slots for the operations
	Increase in the risk of accidents	<ul style="list-style-type: none"> • Reduced and controlled velocity • Compulsory stops to check and tighten the load • Safe driving voluntary campaigns
Timber transportation	Dust	<ul style="list-style-type: none"> • Reduction of dust with moistening of the roads (tank trucks)
	Damage of the road network	<ul style="list-style-type: none"> • Road maintenance during operations • Monitoring and control of load weight of the timber trucks
	Noise	<ul style="list-style-type: none"> • Negotiation of time slots for the operations

*Drift: phenomenon of spray drops carry-over with the wind (EMBRAPA)



Analysis and monitoring of processes of relationship with stakeholders

All the demands concerning forestry operations, identified in the engagement processes, and operational dialogs are critically assessed and validated by the operational areas to review the social impact matrix and improve Suzano's forest management.

Effectiveness of the socioenvironmental impacts mitigation actions

AREA	CATEGORY	NAME OF MONITORING	INDICATOR	RESULTS 2023
Social		Investment in the community (GRI EC1)	Amount of money invested in social projects/programs	R\$ 9,488,967.04
			Communities/localities benefited by the projects	115
	Social impacts on the communities	Operational dialogue and in-person agenda	Rate of fulfillment of the annual dialogue program	93.85%
			Satisfaction index in incident response	95%
			Rate of effectiveness of mitigation actions	66.33%
		Complaints about damage caused by management	Number of incidents reported	655
Average time to respond to complaints			108 days	

Socioenvironmental investment

Socioenvironmental investment is the voluntary transference of private resources in a planned, monitored and systematic way to social, environmental and cultural projects of public interest that contribute to the development of the communities where the company operates. Such investments are segmented into four types of interventions:



Cooperation

One-off support that require a counterpart from the applicant and is applied to community assets. Are necessarily related to the needs of forest and industry operations, expertise and products from Suzano's business.



Donation

Financial contribution or one-off spendings that meet the demands of institutions, bodies or individuals representing the community that are non-profit and do not require a counterpart.



Sponsorship

Granting of resources, whether financial, material and/or services provided by Suzano to enable certain activity or event. It is considered a communication tool.



Programs and projects

Social investments planned and developed within the scope of a certain program, with well-defined purpose and duration (objectives, goals, deadlines, process indicators, results and impacts and responsibilities).

Socioenvironmental programs and projects

The Social Programs and Projects take place mainly after the identification of the level of influence of the enterprise on the community, the socioeconomic aspects of each one (level of organization, vulnerability degree, etc.) and the partnership level (company and community). They arise also from the communication processes, in line with the social pillars of Suzano.

The extension in which such programs and projects are carried out, in the community, derive from the following factors:

- The communities and municipalities social and economic vulnerability;
- The influence of Suzano's forest management on the municipality and community areas;
- Relationship and social investment history in the communities and municipalities;
- Number of communities directly affected by Suzano's forest planting in the municipality;
- Communities interest and availability in taking part in the programs and projects;
- Public authority's interest and availability to co-participate or support such programs and projects;
- Budget availability.

Social projects

PROJECT/PROGRAM	# OF PARTICIPANTS	# OF MUNICIPALITIES	# OF ASSOC.	RESULTS 2023
Diversified Territorial Supply Program	5,929	9	62	In 2023, 5,929 people were directly and indirectly assisted, from 62 associations/cooperatives of rural communities in the Extreme South Territory of Bahia in the municipalities of Alcobaça, Caravelas, Ibirapuã, Mucuri, Nova Viçosa, Prado and Teixeira de Freitas, and Nanuque and Carlos Chagas, in the state of Minas Gerais. They were supported through the socio-environmental investment model in Technical Assistance, seeking to strengthen the Management, Production and Commercialization of the entities.
Colmeias Program	468	4	6	In 2023, 468 people were directly and indirectly assisted from 6 rural community associations in the Southernmost Territory of Bahia, in the municipalities of Alcobaça, Caravelas, Mucuri, Nova Viçosa, through a social and environmental investment model in Technical Assistance, Management, Commercialization, and Materials, Services, and Supplies for the development of planned activities.
Agente do Bem	135	1	-	In 2023, FBU BA continued its internal training strategy, as well as reinforcement actions with the interface public to achieve the program's objectives.
Engagement of Fishing Communities	7,792	3	8	In 2023, the program had a reach of approximately 7,792 direct and indirect beneficiaries in the municipalities of Caravelas and Nova Viçosa, in Bahia.
Suzano's Program for Education (Programa Suzano de Educação, PSE)	31,930	5		<p>The PSE invests in improving the quality of public education by providing professional qualification for educators and encouraging the social participation of families and communities. Its goal is to help public management focus on improving student learning and resource utilization, while structuring a territorial education project built with and for the people. In this sense, it also works to articulate intersectoral actors in Education, Social Assistance, and Health, strengthening the social protection network for children and adolescents.</p> <p>The methodology starts with an educational diagnosis and the prioritization of common challenges faced by groups of municipalities that make up the Education Development Arrangements (ADEs), which together build solutions to improve education in the region.</p> <ul style="list-style-type: none"> • Strengthening collaboration and intersectoral partnerships in educational networks. • Expansion of communication channels and engagement of students and families. • Recognition of the importance of inter-municipal collaboration to implement actions with greater quality and reach. • Valuing continuing education for all educational actors. • In 2023, through the program's actions, more than 31.9 thousand people were impacted.
Sustainable Settlements	2,304	3	5	Continuing with the project's development, the work in 5 settlements represents an area of 10,661.41 hectares with 576 families, which means approximately 2,300 people.

PROJECT/PROGRAM	# OF PARTICIPANTS	# OF MUNICIPALITIES	# OF ASSOC.	RESULTS 2023
Commitment To Renew Life - Poverty Reduction	10,524	9	5	<p>Suzano’s social investment is a strategic instrument to generate value, both for the business and for neighboring communities and the regions where the company operates, ensuring stakeholder engagement.</p> <p>The focus of its actions is on solutions with a direct impact on poverty reduction, guided by its multidimensionality – which affects the spheres of income, health and education – and which can be replicated and expanded in different municipalities. The projects are within six programmatic lines that encompass regional characteristics and their socioeconomic vocations:</p> <ul style="list-style-type: none"> • Sustainable extractivism; • Inclusive recycling; • Entrepreneurship; • Territorial supply networks; • Access to employment; • Suzano Value Chain.





PROJECT/PROGRAM	DESCRIPTION	RESULTS 2023
Program <i>Voluntariar</i>	<p>Formare</p> <p>Project developed in 2005 by the program <i>Voluntariar</i> in partnership with Iochpe Foundation. Its aim is to foster the professional training of young adults in situation of social vulnerability for the job market. The program offers the training for operator of roduction process at the 5 units of the company: Suzano (SP), Mucuri (BA), Imperatriz (MA), Três Lagoas (MS) and Aracruz (ES). In 2023, we opened a new unit in Belém (PA), totaling 6 units and making Suzano one of the companies with the largest number of schools in Brazil.</p>	<ul style="list-style-type: none"> • 15 classes graduated • 298 young people graduated (122 Fas apprentices and 176 as social model), of which, 47% women, 53% man (32% Black men and women). • 90 inserted with Suzano (30%), of which, 34% woman, 66% man (83% Black men and women) • More than 800 volunteers since the beginning of the program
	<p>Contributing to the Future</p> <p>The memory program <i>Contribuindo para o Futuro</i> aims to boost the volunteers work of the trainees to act as mentors of LGBTQIAP+ people; they are college students from regions close to our areas of operation (Bahia, Ceará, Espírito Santo, Maranhão, Mato Grosso do Sul and São Paulo). The project is an initiative of the program <i>Voluntariar</i>, conducted in partnership with the area of People and Management and <i>Squad Diversidade</i>, using the Joule Institute methodology.</p>	<ul style="list-style-type: none"> • 2 trainees • 4 subscribers
	<p>Walks and tours <i>Suzano Faz Bem</i></p> <p>The initiative sets the resumption of Suzano's in-person sports actions, with the donation of non-perishable food.</p>	<ul style="list-style-type: none"> • 200 families benefited
	<p><i>Voluntariar em Ação</i></p> <p>This is a collaborative and supportive movement that had its first edition in 2019. Our purpose is to strengthen the volunteer culture within Suzano and acknowledge the dedication of people who work for the common good. We want to reinforce the company's social work through the drivers of our culture and to promote the integration with the communities in the surroundings of our units.</p>	<ul style="list-style-type: none"> • 427 volunteers • 1,066 hours of volunteer work • 4,443 benefited • 5 institutions assisted in Americana (SP), Mucuri (BA), Suzano (SP) and Serra dos Aimorés (MG)

Performance and main indicators of forest management

ASPECT	PROCESS RESP.	MONITORING	INDICATORS OF MONITORING	GOAL 2023	ACHIEVED 2023
Economic	Harvest	Harvest Productivity	Yearly harvested timber volume	13,074,355 m ³	12,922,512 m ³
Environmental	Forest Fire Prevention and Fighting - PCIF	Fire	Fire - crop	N/A	Burning of 8.3 hectares per event
		Fire	Fire - preservation	N/A	Burning of 6.5 hectares per event
	Logistics	Timber supply for production	Volume of timber delivered	5,996,000 m ³	5,897,000 m ³
	Environment	Environmental education Program	Number of people impacted by the Environmental Education Program (internal and external)	Schools BA <ul style="list-style-type: none"> • 1,000 people impacted • 20 schools participating • 03 cycles per year • 3 actions per year (1 per cycle) Schools MG <ul style="list-style-type: none"> • 100 people impacted • 2 schools participating • 1 action per year Workforce <ul style="list-style-type: none"> • 3 visits per year • 30 employees impacted 	Schools BA <ul style="list-style-type: none"> • 1,801 people impacted • 32 schools participating • 03 cycles per year • 3 actions per year (1 per cycle) Schools MG <ul style="list-style-type: none"> • 155 people impacted • 4 schools participating • 1 action per year Workforce <ul style="list-style-type: none"> • 3 visits per year • 51 employees impacted

12. INDICATORS

ASPECT	PROCESS RESP.	MONITORING	INDICATORS OF MONITORING	GOAL 2023	ACHIEVED 2023
Social	Environment	Environmental education Program	Total number of training hours in the Environmental Education Program (internal)	-	60 hours
		SSOMAR	Score obtained with SSOMAR	90%	92.4%
	SSQV	DNA	Conclusion of DNA deviations	80%	98%
		OPA	Score obtained with OPA - Positive observation of the activity	90%	90%



COMMUNICATION WITH STAKEHOLDERS

13



Suzano is constantly in contact with its employees and with the several segments of society, keeping them up to date on its activities, and always keeping things clear, transparent and straightforward.

Among the most commonly used communication media are:

INTERNAL AUDIENCE

Corporate social media, Intranet, Printed and Digital newsletters, walls, Corporate TV, Manuals and Educational guides.

EXTERNAL AUDIENCE

Press Relations, Website, Social media, Visitation programs, Annual reports, Management plan summary. In addition to those, the company maintains other communication channels, as described below.



Communication with specific audiences

SUZANO ANSWERS

FBU BA/ES:
0800 283 83 83

Corporate contact
0800 022 17 27

If you have any questions, suggestions for improvement, or complaints, please contact us. It is toll-free!

SOCIAL MEDIA

Facebook
www.facebook.com/suzanoempresa

Youtube
www.youtube.com/@Suzanooficial

Instagram
www.instagram.com/suzano_oficial

LinkedIn
www.linkedin.com/company/suzano

OMBUDSMAN SUZANO

Brazil
0800 771 40 60 (toll free)

E-mail
suzano@denuncias.contatoseguro.com.br

Abroad
Check specific numbers on the Suzano Ombudsman website.

Website
www.contatoseguro.com.br/suzano

To report beneficial or adverse impacts by the community, please call:
0800 771 14 18



suzano.com.br