



# TRAILHEAD

BASECAMP SERIES  
600 SQ FT

600 SQ. FT. · 2 MODS · 1 BEDROOM · 1 BATHROOM (J&J) · STACKED WASHER / DRYER  
DEDICATED MUDROOM WITH BENCH AND CUBBIES · HIGH CEILINGS · OPEN CONCEPT  
AMPLE WINDOWS & NATURAL SUNLIGHT · STAND-ALONE OR GARAGE OPTIONS · MIRRORED OPTIONS



STAND-ALONE OPTION





GARAGE OPTION  
(SITE BUILT GARAGE AND STAIRS / LANDING)





**FLOOR PLAN**

SCALE: 1/4" = 1' 0"



**BIRD'S EYE**

SCALE: 1/4" = 1' 0"



MAX. ROOF HEIGHT  
ELEV = 113'-8 3/4"

T.O. MAIN LEVEL SUBFLOOR  
ELEV = 101'-9 5/8"

T.O. CONC. WALL  
ELEV = 100'-6"

MAX. FINISHED GRADE  
ELEV = 100'-0"



## ELEVATIONS

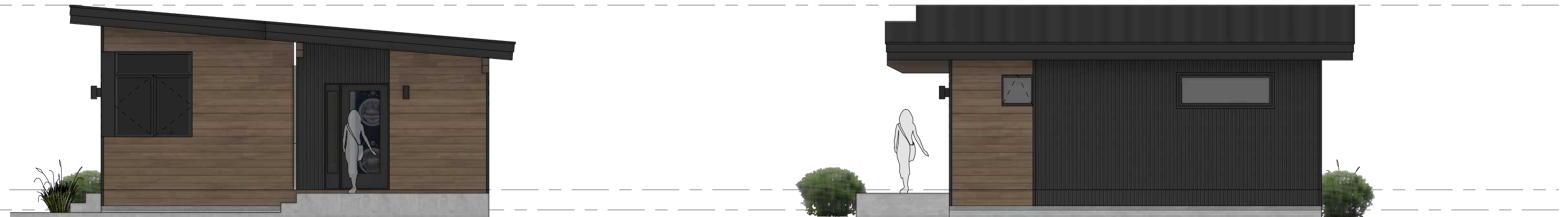
SCALE: 1/4" = 1'-0"

MAX. ROOF HEIGHT  
ELEV = 113'-8 3/4"

T.O. MAIN LEVEL SUBFLOOR  
ELEV = 101'-9 5/8"

T.O. CONC. WALL  
ELEV = 100'-6"

MAX. FINISHED GRADE  
ELEV = 100'-0"



## ELEVATIONS

SCALE: 1/4" = 1'-0"

## INCLUDED IN BASE COST:

### Exterior:

- Andersen 100 Series Windows and Doors (per Plan)
- STK Cedar with Metal Accents (per Plan)

### Interior Finishes:

- Semi-custom cabinetry by Cliq Studio
- LVP Flooring throughout
- Tiled bathroom floors and shower surrounds
- Quartz countertops throughout
- Custom-built painted Bench and Cubbies in Mudroom

### Appliances and Mechanical:

- Electric Cove Heating System
- Whirlpool Stainless Appliances

## AVAILABLE UPGRADES:

### Exterior:

- Hardie Board & Batten and Lap siding alternatives
- Architectural metal panel accents

### Interior Finishes:

- Expanded cabinetry color & style options
- Engineered Hardwood Flooring
- Tile upgrade options
- Upgrade Mudroom Bench and Cubbies to match cabinetry

### Appliances and Mechanical:

- Warmboard Radiant Heat
- KitchenAid and GE Café Appliances
- Gas or Electric Fireplace & Surround finish options
- Accent lighting & system wiring

# TRAILHEAD

**BASECAMP SERIES**  
**600 SQ FT**