

HERA 500

CNC GEAR HOBBING MACHINE

Combining advanced technology, precision components, and economic pricing to enable profitable production of high-quality spur gears, helical gears, worm gears, and other hobbled profiles.

- **High-speed direct-drive hob head with CNC shifting:**
 - Automatic retraction of X-axis during power failure, preventing hob damage.
- **Direct-drive torque motor for the work spindle:**
 - Driven via FANUC® torque motor.
- **Flexible standard dialogue program offering:**
 - One or two gears on a single workpiece.
 - Radial, axial, climb, and/or conventional hobbing on single- or two-cut cycle.
 - Crowning (lead modification) and deburring using two equal hobs.
 - Automatic shifting over broken hob section.
- **CNC by FANUC® oi-MF with 6 axes (optional 7):**
 - Tangential position of hob head (shifting) by CNC.
- **Quality components and construction:**
 - Precision, repeatability, and control with linear scales on the X-axis.
 - Cast iron machine base for optimum stability and dampening.

2.1 DP

Max Pitch Rating

500

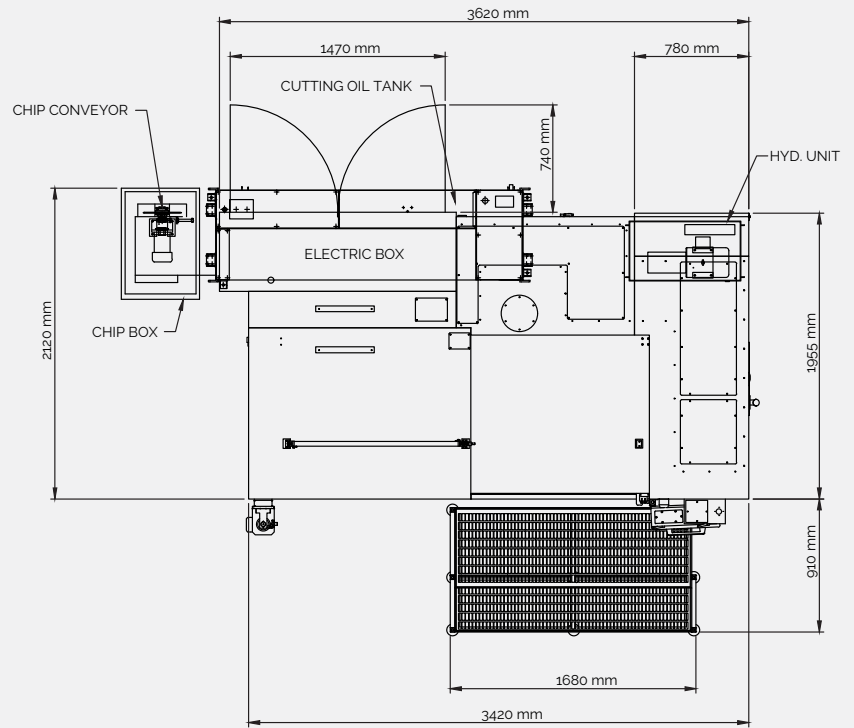
RPM Hob

7

CNC Axes



WORKPIECE		Hera 500 metric/imperial	
Maximum pitch rating, hobbing	12.00 m _n	2.1 DP	
Maximum workpiece diameter	660 mm	25.98 in	
Total axial travel	400 mm	15.75 in	
Minimum axial position	230 mm	9.06 in	
Maximum axial position	630 mm	24.80	
Total radial travel of hob head	340 mm	13.39 in	
Minimum radial position of hob head	80 mm	3.15 in	
Maximum radial position of hob head	420 mm	16.54 in	
Total tailstock travel	380 mm	14.96 in	
Minimum tailstock position	440 mm	17.32 in	
Maximum tailstock position	820 mm	32.28 in	
Maximum work spindle speed	100 rpm		
Maximum table load	3,500 kg	7,716 lb	
HOB HEAD			
Maximum spindle speed	500 rpm		
Maximum hob diameter	280 mm	11.02 in	
Maximum cutter width	280 mm	11.02 in	
Maximum cutter shift	250 mm	9.84 in	
Swivel range	+35°/-45°		
DIMENSIONS			
Width	3,500 mm	137.80 in	
Depth	2,800 mm	110.24 in	
Height	2,900 mm	114.17 in	
Weight	14,000 kg	30,900 lbs	
POWER			
Total connected load	80 kVA		
Main spindle motor	12 kW (115 Nm)		
Electrical connection	220V, 3 phase, 60 Hz		



CONTACT
 (847) 931-4121
 635 Schneider Drive
 South Elgin, Illinois 60177

HELIOSGEARPRODUCTS.COM
 sales@heliosgearproducts.com

