



The Emily Shane Foundation

Newsletter

Winter 2023 Edition

ISSUE 20

Our nonprofit charity foundation exists to honor the memory of thirteen-year-old Emily Rose Shane, who was tragically murdered on April 3, 2010 on Pacific Coast Highway in Malibu, CA. We transformed this tragedy into a positive mission of empowering underserved students.

The Emily Shane Foundation's **SEA (Successful Educational Achievement) Program's mission is to empower underserved, disadvantaged middle school students in the mainstream classroom at risk of academic failure with the resources they need to thrive in middle school and beyond.** We provide individualized academic tutoring and mentorship, and we work hard to build relationships that are positive and have a lasting impact. Our objective is for these children to be successful students, helping lead them to achieving their goals and dreams. Participants are guided on a path to success in school and in life.

The SEA Program makes a positive difference in the lives of the children we serve!

Inside This Edition

Message From Our Executive Director 2

Fall Events 3

SEA Program Success Stories 5

SEA Program Staff Spotlights 5

Quotes and Testimonials 6

Our Amazing Volunteers 6

ESF at Our Partner Universities 7

ESF News! 7

Photo Gallery 9



Eric, 6th Grade, Mentor/Tutor Taylore, Culver City

[Click here to make a difference for a student!](#)

Message From Our Executive Director

Dear Friends of The Emily Shane Foundation,

It's always exciting to have a new year begin, and I look ahead to all that we aim to accomplish in 2023!

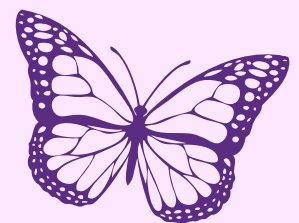
This November, we reimagined our annual fall fundraiser and titled it "Soaring to Success." It was comprised of three components - an online silent auction, a delightful Wine Pairing Evening at Strange Family Vineyards, and a student sponsorship campaign. These all combined to successfully help us raise funding for the SEA Program this school year. We're grateful to all who participated!

ESF renewed our MOU with LAUSD (which is valid for five years), as well as other required and necessary agreements with various school districts and sites. The foundation also formally became a member of the Malibu Pacific Palisades Chamber of Commerce. Most exciting is that our foundation was selected to be included in this year's edition of The Giving List!

Our SEA Program had a terrific 2022, thanks to all who helped our SEA Program to thrive. Our assessments of students pulled from two of our many sites in the 2021-2022 school year indicated the following: 93% felt more positive in general because of our SEA Program, and 86% reported that the SEA Program helped them greatly with their grades and learning; the same percentage noted they plan to pursue higher education. 93% reported that the SEA Program's support helped them significantly to complete school assignments. 100% of SEA students had at least one class increase by one letter grade.

It is important to note, in addition to our goal for each student to pass all their classes at the minimum, we place a great emphasis on helping a student who may be dealing with other factors affecting academics, such as home life or social issues, which are also tied in to their academic performance. A significant aspect of our work is empowering a student who has self doubt, feels isolated or who expresses that "don't care about school" and is not motivated to try. Our SEA Program is unique, powerful and a positive lifeline for so many.

To all who contribute to our mission and work, I am truly so grateful. Together, we can help our students reach great heights in 2023! Wishing everyone a healthy and positive New Year!



Ellen Shane
Executive Director



ESF's Executive Director, Ellen Shane, with students at Wright Middle School, Westchester

Soaring to Success

In November, we presented our new fall fundraiser, "Soaring to Success," which consisted of three components: an online silent auction, a student success sponsorship campaign, and an in-person Wine Pairing Evening. A huge thanks to all who participated in any component of "Soaring to Success!" Every dollar raised helps support our SEA Program.

Note: we would like to kindly acknowledge all donors who participated in our silent auction. See page 10 for the full list.



Former SEA Student Sofia Sharing Her Experience at the Wine Pairing Evening



One of Our Guests' Reaction After Winning a Raffle Item

**Photos courtesy of Nirav Solanki Photography.*

Three Heart Strings Fundraiser



Three Heart Strings Tabling Event at Point Dume Plaza on September 4, 2022.

ESF welcomed the second opportunity to collaborate with the nonprofit "Three Heart Strings" during the entire month of September 2022. Run by high school students, this charity creates and sells unique bracelets and other products for specific, selected charitable causes. Each month, a different cause is supported. This year, the creations included a purple bracelet (our foundation's color) with a lovely red rose on it (Emily's middle name was Rose). The bracelets were available to purchase at both in-person tabling events and online. They are still available online on their website.

Please [click here](#) and type The Emily Shane Foundation in the search bar to make your selection. We are grateful to everyone at Three Heart Strings for the funds raised and their support of our SEA Program. We hope to continue our collaboration in 2023!

[Click here to watch Three Heart Strings present a check to ESF!](#)



SEA Program Manager Rhea with Students at Markham Middle School, Watts

SEA Program Commences in Watts

This past fall, we launched the SEA Program at a brand new site in Watts. We are looking forward to our students at Markham Middle School realizing progress with the one-on-one support they will receive.



We are delighted to announce our inclusion in....

The Giving List Los Angeles 2022-2023

We are proud to announce that we were selected to be featured in the 2022-2023 edition of The Giving List! This publication features leading nonprofits in Los Angeles.

Our presence in The Giving List will help to increase awareness and support for our important work. Read our impact and check out our matching grant challenge [by clicking here.](#)

ESF Executive Director Honored

ESF's Executive Director and Co-Founder, Ellen Shane, was honored by the Malibu Pacific Palisades Chamber of Commerce at a luncheon on November 3, 2022. She merited the Women's Lifetime Legacy Award, which recognizes a woman who has demonstrated superior leadership over several years and who has a significant track record of long-term achievements and accomplishments in business, industry, and/or enterprise.

Ellen is extremely passionate and dedicated to her work for the Emily Shane Foundation's SEA Program and expressed deep appreciation in being chosen to receive this recognition. She is proud that to date, the foundation has positively impacted the lives of over 1,000 students and looks forward to the years ahead, aiming to grow the foundation and reach many more in need. We are proud of her accomplishments for ESF!



From Left to Right: Heidi Bernard, Director of Development of Pepperdine Crest Associates, Ellen Shane, ESF Co-founder and Executive Director, Barbara Bruderlin, CEO of Chamber of Commerce

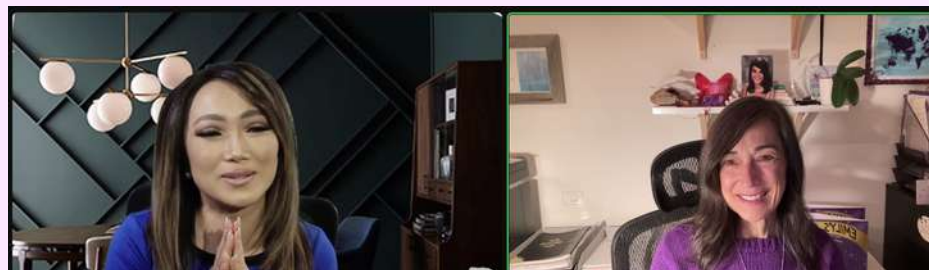
ESF is Now an Official Member of Our Local Chamber of Commerce

The Emily Shane Foundation is proud to now be an official member of the Malibu Pacific Palisades Chamber of Commerce. The chamber is dedicated to helping local companies grow through business programs and education that create a strong local economy, and foster a strong sense of neighborhood community and prosperity.



ESF Interviews on LA's Local CBS Station

Reporter Suzie Suh taped interviews with Ellen, SEA Program students, their mentor/tutors and parents for a segment to be aired sometime this year. We are grateful for this opportunity to spread awareness of our work to the viewing public and will be sure to alert you to the air date of the interviews. Stay tuned!



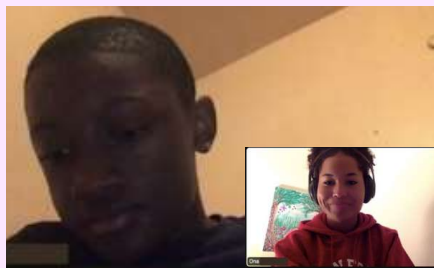
CBS Anchor/Reporter Suzie Suh and ESF Executive Director Ellen Shane

SEA Program Success Stories



Christian, 8th Grade, Mentor/Tutor Karina STEAM Academy in Pico Rivera

During the fall term, Christian worked with one of our exceptional mentor/tutors, Karina, who has been with ESF since 2019. To date, Karina's efforts have helped Christian bring his history grade from an F to passing!



Amory, 7th Grade, Mentor/Tutor Ona Wright Middle School STEAM Magnet in Westchester

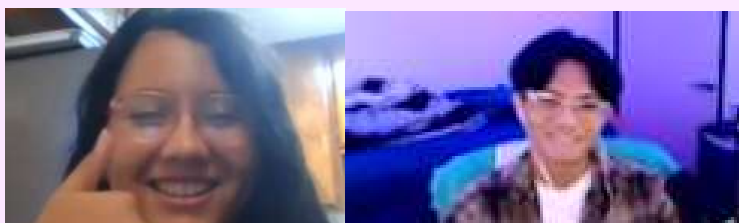
Thanks to SEA Program sessions with his mentor/tutor Ona, Amory has made steady progress. He transformed his previous F in English to an A by the end of the fall semester!



Naomi, 6th Grade, Mentor/Tutor Can Colina Middle School in Thousand Oaks

With the inspiration and tutoring provided by her mentor/tutor, Naomi has raised her grades in both English and science from failing to C's! We are so proud of her and look forward to seeing her progress even further.

SEA Program Staff Spotlights



Colin working with Chloe, 6th Grade, Pico Rivera

Mentor/Tutor Colin, Pico Rivera, STEAM Academy
Colin started working for the SEA Program this past fall, and has made great strides with his students. He is truly focused on his students' successes, and goes the extra mile to learn new concepts to teach his students in a manageable way.

"I've been able to use my own methods to explain concepts to my students. They like my way better because it makes sense to them, and their efforts are translated to better work."



Julianna working with Matthew, 8th Grade, Oxnard

Mentor/Tutor Julianna, Oxnard Rio Del Valle Middle School

Julianna is now in her second year working as a mentor/tutor for the SEA Program. She is extremely dedicated to her students and goes above and beyond.

"My student struggles the most in math, and it's been great seeing him tackle difficult concepts on his own, because when we first started he couldn't do them without my help."

Quotes and Testimonials

What Our Mentor/Tutors Have to Say...

Mentor/Tutor Colin, Pico Rivera

“Chloe has been able to solve some problems by herself. I would make up problems and have her explain to me how to solve the problem on her own. It’s so rewarding to see her effort pay off.”

Mentor/Tutor Genevieve, Culver City

“Jaydin has been working so hard to complete his missing work and bring up his grades. It’s great to see his work ethic improve.”

Mentor/Tutor Can, Thousand Oaks

“Oliver has more motivation in the new school year and has been doing better in all of his classes compared to before SEA.”

Mentor/Tutor Eunice, Pico Rivera

“Bella’s motivation to do well in school has increased, even though this semester was hard for her. I look forward to working with her again next semester so she can finish strong.”



Mentor/Tutor Can working with Oliver, 8th Grade, Colina Middle School in Thousand Oaks

From Our Site Liaisons

Ms. Brown, School Counselor

Wright Middle School STEAM Magnet

“The SEA Program has been a wonderful gift to our students here. We really needed a support for our students who seem to be “slipping through the cracks.” Through the SEA Program, our students are receiving individual tutoring and mentoring from committed college students who are studying at our local universities. I have had parents in tears because they could not afford tutoring for their child, and thanks to The Emily Shane Foundation, I can offer them an intervention that is personalized and practical.”

Mr. Hernandez, School Counselor

North Park Academy of the Arts

“Part of what makes the SEA Program so great is the connection the mentors strive to make with our students. These mentors don’t just view this as a job, but as an opportunity to help facilitate academic and social-emotional success for our kids. I would highly recommend any school district to look into inviting the SEA Program as a partner in their district. The opportunities for growth are limitless with this program supporting your students.”

Markie, Boys and Girls Club Director, Thousand Oaks

“This is my second school year working with the SEA Program. The tutors that have come to my Boys and Girls Club have all been awesome and have cultivated a strong relationship with their students, making the students feel comfortable and excited to learn. All the parents of my students have been so happy with the results and, along with my staff, I have noticed a growth in confidence for these students. I look forward to many more years of partnership with the SEA Program!”

Acknowledging Our Volunteers



Eunice, Mentor/Tutor in Pico Rivera

Eunice is one of our volunteer mentor/tutors from Price Waterhouse Coopers. She currently lives in Chicago, working as a financial consultant. Eunice decided to join the SEA Program as a mentor/tutor because it brings her joy to be able to support students in their growth and independent learnings and seeing how curiosity sparks passion.



Ananya, Social Media Marketing and Statistics Volunteer

Ananya is a high school senior from Houston, TX who has been working with ESF for nearly three years. She works on the social media team and analyzes student progress statistics. From arranging social media campaigns to assessing the data from our SEA Program, Ananya’s dedication to our mission is inspiring.

ESF Club Activity

University of Southern California

Our SEA Program Manager, Rhea, attended USC's Fall Club Fair on Tuesday, August 30, 2022. Martina, the ESF Club President at USC, is in her second year in this position. She helped set up our table with Rhea, and along with members of the Club's executive board, fielded inquiries from interested students who stopped by.

The fair was a success as we obtained over 75 new sign-ups! Thanks to all who helped out to make this possible, and for increasing awareness of our work and mission on USC's campus.



ESF Club President at USC, Martina, Speaking to Interested Students

Loyola Marymount University

Along with members of the ESF marketing team who attend LMU, Rhea, our SEA Program Manager, set up a table at LMU's Club Fair on Friday, August 25, 2022. Over 50 students stopped by and signed up to join our club! We appreciate all who helped out at the event, and thank LMU ESF Club President Reese for helping to arrange our presence. Our presence attracted applicants for various positions we needed to fill and raised awareness of our work to the students.



SEA Program Manager Rhea After Setting Up at LMU's Club Fair

ESF News!



Ellen Shane with Students at Clinton Middle School, one of our LAUSD SEA Program Sites

MOU Renewal with the LAUSD

In the fall of 2022, ESF formally completed a five year contract renewal with the LAUSD to provide our services to specific middle school sites with the district! We are grateful to Mr. Lopez and Ms. Navarro, both of whom are Organization Facilitators of Local District Central, for helping us make this possible!

Art Donation

David Davis kindly facilitated the donation of limited edition screen prints by Andy Warhol's protégé, Steve Kaufman, to ESF. Each print comes with a certificate of authenticity. Mr. Kaufman worked for Mr. Warhol for six years and emulated his style in creating his own pop art. These prints are each valued at \$400 each and all purchases help support the SEA Program. If interested, please contact: info@emilyshane.org



21 Miles in Malibu

Michel Shane, father of Emily Shane, a co-founder of the foundation and film producer, has produced a documentary highlighting the alarming number of fatalities and accidents on Pacific Coast Highway in Malibu. This is the very highway where Emily was killed. The documentary's worldwide premiere will take place in February at the Santa Barbara International Film Festival. Our hope is that the film serves as a call to action to increase awareness for drivers on this stretch of highway, as well as a call to action for officials to implement measures to increase safety and minimize future tragedies and the resulting anguish that too many have experienced to date.



The film will be airing at the following days and times at the Santa Barbara International Film Festival: February 16 at Metro 4 Theatre, Auditorium #4 at 8:40 pm and on February 18 at Fiesta 5 Theatre, Auditorium #4 at 7:40 pm.

Please visit: 21milesinmalibu.com to learn more.

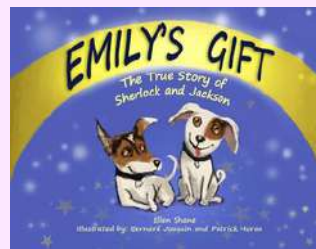
"Emily's Gift" by Ellen Shane

ESF Executive Director, Ellen Shane, published a children's book in August 2012. It's a true and engaging story relating how Emily, the youngest of the Shane's three daughters, aspires to bring a puppy into her family.

The book is suitable for younger children, approximately 4-8 years old.

Give the gift of reading to a child in your life!

Every book purchased helps benefit the foundation's SEA Program.



Click on the books to view purchase options in both English and Spanish!

Acknowledgements

We would like to acknowledge the ESF Fundraiser Event Committee for their efforts this year!

Lisa Ellis, Melinda Mendel, Mary Garrison, Kelly Uchimura, Kathy Landman, Barbara Avishay, and Emily Schmidt Goldstein.

New to the Committee in 2023 is Monique Gagnier Robinson.



ESF would like to convey gratitude to the following people:

Brian and Shamra Strange of Strange Family Vineyards, Jim Flock, Emily Schmidt Goldstein, and Sabina Schmidt Goldstein.

Mark Your Calendars - Our Upcoming Spring Gala Fundraiser Event

Join us on the evening of

Thursday, April 27, 2023

for Wings Over Malibu!

Mark your calendars now for our annual spring fundraiser event.

We'll present live and silent auctions, great food, top notch wines, and more!

Further details to be announced!



Emily Rose Shane



In Loving Memory of
Emily Rose Shane

08/09/1996 - 04/03/2010

Want to communicate with us?
We'd love to hear from you!
Please send an email to
INFO@EMILYSHANE.ORG
or visit us at
emilyshane.org

Keep Up with ESF on Social Media!

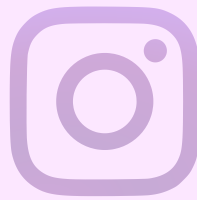


Photo Gallery



Ellen Shane with SEA Program Students at Rio Del Valle Middle School in Oxnard



Jaydin, 7th grade, Mentor/Tutor Genevieve, Culver City



Leah, 7th grade, Mentor/Tutor Vian, South LA



Mentor/Tutors Leyla and Benai pictured with students at John Adams Middle School after their Student Orientation



Lilly, 8th grade, Mentor/Tutor Emily, Malibu



Leah, 7th grade, Mentor/Tutor Eva, Malibu



Students at North Park Academy of the Arts in Pico Rivera attending a virtual SEA Program Student Orientation

"Soaring to Success" Silent Auction Donors

We want to express a very special thanks to Emily Schmidt Goldstein for making our auction possible.

Silent Auction Donors

A Noise Within	Grammy Museum	Pasadena Playhouse
Ace Hotel and Swim Club	Hollywood Wax Museum	Peju Winery
Aquarium of the Pacific	Island Packers	Perry Ellis
Ayres Hotels	Jack in the Box	Petersen Automotive Museum
Belly Up	Kendra Scott	Porter Valley Country Club
Beverly Hills Marriott	Kidspace Children's Museum	Porto Elounda Golf and Spa Resort
Beverly Hills Plastic Surgery Group	King's Seafood Company	Porto's Bakery
Bravo String Quartet	Knott's Berry Farm	PRP Wines
California Botanic Garden	La Mirada Theatre	Santa Monica Playhouse
Callaway Golf	Laetitia Vineyard & Winery	Simm's Restaurants
Castelli's Ristorante	Linksoul	Six Flag's Hurricane Harbor
Chance Theater	Lisa Smith Wengler Center for the Arts	South Point Hotel, Casino, and Spa
Cheryl Silverstein	Los Angeles Lakers	Spirit Cruises
Chipotle	Los Angeles Opera	Steve Kaufman
Corison Winery	Lucky Feet Shoes	Tahoe Donner
Coronado Playhouse	Lucky Strike	Terranea Resort
Curves Fitness	Miguel's Cocina	The Canyon
CVS	Mission Inn Foundation	The Fountain Theatre
Desert Adventures Kayak Las Vegas	MOXI, The Wolf Museum of Exploration and Innovation	The Ranch at Laguna Beach
Disneyland	Museum of Tolerance	The Saban Theatre
Domenico's Italian Restaurant	Olio e Limone	Theatre Palisades
El Capitan Hotel	Omni Hotel Oklahoma City	USAopoly
Fleet Science Center	Pacific Chorale	Wallis Annenberg Center for the Performing Arts
Four Seasons Hotel Westlake	Pacific Park	Wheel Fun Rentals
Frozen Fruit	Pala Casino, Spa, and Resort	Will Geer Theatricum Botanicum
Geffen Playhouse	Palm Springs Aerial Tramway	Wines for Humanity
Gorjana		

We are grateful to the contributions of the following for making our "Soaring to Success" fundraiser possible:

Strange Family Vineyards
Nirav Solanki Photography
Ishika Patel
Sabina Schmidt Goldstein