


NEWSLETTER

SUMMER 2025 EDITION



Our nonprofit charity foundation exists to honor the memory of thirteen-year-old Emily Rose Shane, who was tragically murdered on April 3, 2010 on Pacific Coast Highway in Malibu, CA. We transformed this tragedy into a positive mission of empowering underserved students.

IN THIS EDITION

A Message from Our Executive Director	1
Wings Over Malibu 2025	2-3
Our SEA Program's Impact	4-7
Staff Highlights	8-10
Driving Change: ESF's Second Division	11
Upcoming Events & More	12-14



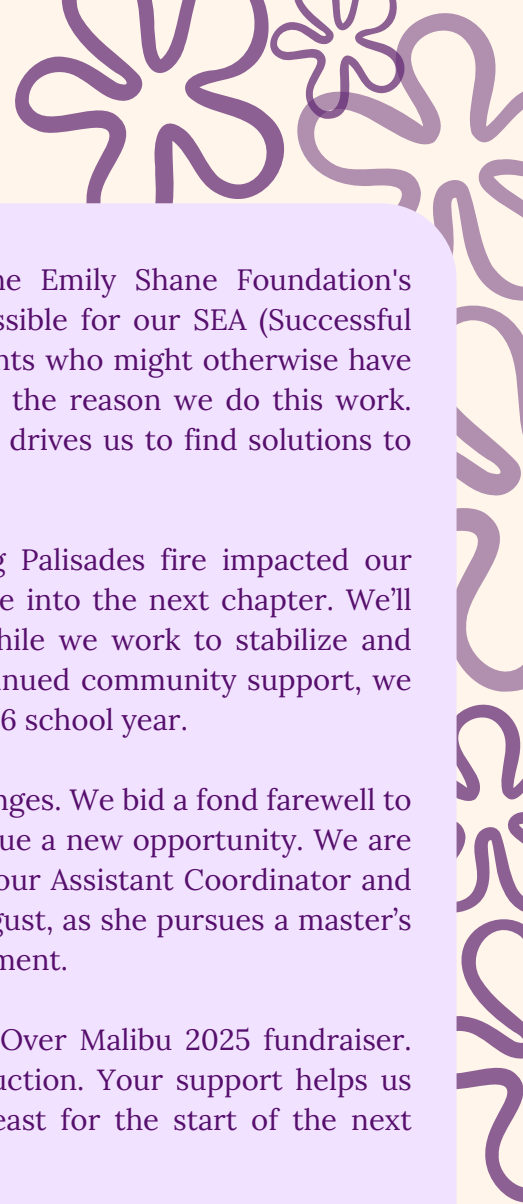
SEA Program Coordinator Harege Kebede poses with SEA Program participant Rosalia (Grade 6, Rio Del Valle Middle School, Oxnard) during our student orientation.

CHAMPIONING STUDENT SUCCESS FOR ALL!

Our foundation's SEA (Successful Educational Achievement) Program empowers underserved middle schoolers at risk of academic failure through a comprehensive, intensive, and one-on-one approach.

By fostering strong mentor relationships, we guide students toward success—in school and in life.

A MESSAGE FROM OUR EXECUTIVE DIRECTOR



I want to extend heartfelt thanks to everyone who was part of the Emily Shane Foundation's community this past 2024-2025 school year. Your support made it possible for our SEA (Successful Educational Achievement) Program to empower 80 middle school students who might otherwise have fallen through the cracks. These young lives, each full of potential, are the reason we do this work. Seeing their progress firsthand, and knowing you help make it possible, drives us to find solutions to sustain this program - even in the face of adversity.

This has been a year of both triumph and challenge. The devastating Palisades fire impacted our operations and funding, forcing us to make tough decisions as we move into the next chapter. We'll need to pare down elements of our program and adjust operations while we work to stabilize and rebuild. Yet, I remain confident that with our shared strength and continued community support, we will find solutions and the best path forward to commence the 2025 - 2026 school year.

As we navigate this transition, I want to acknowledge some key team changes. We bid a fond farewell to our SEA Program Coordinator, Harege Kebede, who is departing to pursue a new opportunity. We are grateful for her contributions and wish her every success. Additionally, our Assistant Coordinator and Marketing Manager, Mary Fernandez, will shift to a part-time role in August, as she pursues a master's degree. We're proud of her ambition and grateful for her ongoing involvement.

Despite the hurdles, we were heartened by the success of our Wings Over Malibu 2025 fundraiser. Thank you to all who attended and participated in our online silent auction. Your support helps us continue the SEA Program; though likely in a scaled-down form, at least for the start of the next academic year.

We're also proud to share that our Foundation's second division, Driving Change, is gaining momentum and already making a meaningful impact. The program is growing quickly and bringing vital awareness and advocacy to help make our roads, in particular Pacific Coast Highway in Malibu, safer for all. Part of this initiative is an approach to gamifying driving education to reach youth and yield safer driving on our roads. We have already assembled an impressive list of partners.

Challenges, I've learned, often bring unexpected opportunities. In this time of change and uncertainty, I remain optimistic. The potential of Driving Change to grow into a powerful force for safety and education inspires us, just as the SEA Program's success continues to affirm our mission. Together, we will move forward with purpose and resilience. Our shared commitment to making a difference in people's lives, in Emily's memory, will guide us into a future filled with hope and continued impact.

With sincere gratitude and warm wishes for a wonderful summer,

Ellen Shane 

Ellen Shane
Co-founder & Executive Director
The Emily Shane Foundation

**CLICK
HERE** 

**Your Support Is Needed More
Now Than Ever! You Can
Help Our Students Soar to
New Heights!**

Wings Over Malibu 2025

Presented by The Malibu Project

City of Malibu Councilmember Haylynn Conrad Was Honored



ESF Board Chair Michel Shane and ESF Executive Director Ellen Shane introduced honoree guest Malibu Councilmember Haylynn Conrad.

Wings Over Malibu 2025 marked a meaningful milestone for The Emily Shane Foundation - our 10th annual spring fundraiser! We extend our heartfelt thanks to everyone who made this special evening possible; particularly our event's presenting sponsor **The Malibu Project**.

We are deeply grateful to the dynamic and charismatic **Charissa Seaman of Dance Star Malibu** and her star pupil Ayla, who prepared a performance just for the event. Much gratitude is extended to our generous venue host **Café Habana Malibu**.

Our gratitude extends to **Hoyt Family Vineyards** for donating a delightful rosé that added to the evening's charm. Huge thanks as well to our incredible event committee for their dedication and effort in planning and executing every detail, and to the volunteers who helped with setup, supported the event in all areas throughout the evening, and assisted with takedown.

We also want to acknowledge **Lisa Hall** for selecting beautiful wildflowers to adorn the tables and entry, and **Robin Hild** for generously donating his time and professional sound system. A full list of all sponsors and donors is at the end of the newsletter. We value your contributions and apologize if we omitted anyone in error.

This year's turnout and community support exceeded our expectations! We are thrilled to share that the event was a true success. Thank you to all who attended, participated in our online silent auction, and continue to support ESF. Your involvement reminds us that we are not alone in our mission and inspires us to keep driving our work forward.



ESF Event Fundraiser Committee Member Emily Elizabeth showcased a live auction item: a luxurious cashmere scarf from One Moon Cashmere.



We extend our heartfelt gratitude to everyone who participated in and supported our live auction. We were delighted to showcase a wide variety of items, ranging from travel experiences to an electric bike.



We were delighted to honor a longtime member of our ESF Fundraiser Event Committee since 2016, Emily Schmidt-Goldstein. She is invaluable to our Foundation in many ways, from securing items for our auctions to proofreading all our written communication. She is a gem!

WINGS OVER MALIBU 2025 VIDEO:



click here

A look at the fantastic work of The Emily Shane Foundation's SEA (Successful Educational Achievements) highlights the transformation that occurs when a student enters the program, as discussed by students, mentors/tutors, and parents.

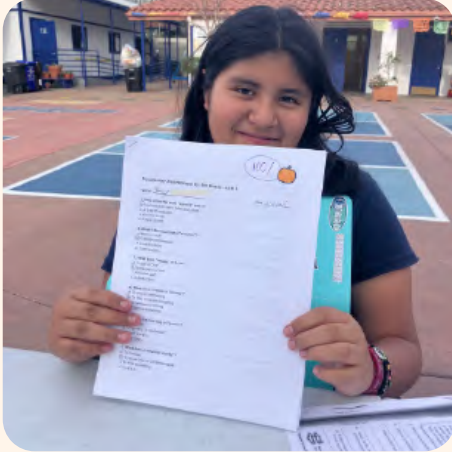


click here



OUR IMPACT

DISCOVER OUR SUCCESS STORIES MADE POSSIBLE BY YOUR SUPPORT!



Amy, Grade 6, Saint Anne School, Santa Monica

With the support of her mentor/tutor June, Amy has made incredible progress in both English Language Arts and Math. By using flashcards and study guides, she earned a perfect 100% on her final Math test – building on the growth she showed earlier this year in English Language Arts. Amy continues to flourish and has already shared how excited she is to return to the program next school year.

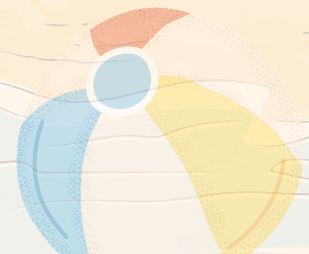
Raquel, Grade 7, Clinton Middle School, South Los Angeles

Raquel demonstrated remarkable perseverance this year. Her steady progress – from an F to a C in History and from an F to a B in both Science and Math – speaks volumes about her commitment and determination to grow. She continued to build on that momentum, maintaining strong grades and finishing the school year on a high note.



Gabriel, Grade 7, Rio Del Valle Middle School, Oxnard

Gabe, our wonderful student speaker at Wings Over Malibu, has made tremendous strides with the support of his mentor/tutor Emily. He raised his math grade from an F to a B and completed a major missing assignment worth 100 points. By the end of the school year, Gabe earned all passing grades – most of them As and Bs. His progress is a powerful testament to his dedication and their incredible teamwork!



WHAT OUR SITE LIAISONS HAVE TO SAY...

Ms. Davis, Counselor, Wright Middle School STEAM & Gifted Magnets, Westchester

“I have had the pleasure of working with ESF for three years, and I truly appreciate the open communication we share to ensure that students are being properly supported. Parents have shared lots of positive feedback, and the students have shown real growth – both academically and socially. They’re speaking up for themselves, asking more questions, and genuinely excited to show up – some are even asking to continue tutoring again next year!”

.. ————— ..
Ms. Curry, Club Director, John Adams Middle School Club

Boys & Girls Clubs of Santa Monica, Santa Monica

“For over a decade, The Emily Shane Foundation has been a valued partner in supporting our middle school youth. Through their dedicated and trained mentor/tutors, the Foundation provides not only academic support but also critical life skills development. As a result, our youth are not only raising their grades but also growing in confidence, as they become better equipped to take on future academic and personal challenges. We are truly grateful for this impactful and meaningful partnership, which continues to make a lasting difference at the Boys & Girls Clubs of Santa Monica.”

.. ————— ..
Ms. Gavilanes, Counselor, STEAM Academy @Burke, Pico Rivera

“Our school partnered with ESF to offer extra support and resources to students who need it most. We’ve seen students in the SEA Program improve academically, which has been really encouraging. Parents and students alike have shared how much they appreciate the support, and many have expressed that in-person sessions have been especially beneficial, as they have provided more structure and focus.”



Eugene, Grade 7, Wright Middle School STEAM Magnet, Westchester



Gabriel, Grade 7, John Adams Middle School, Santa Monica



Daniel, Grade 8, STEAM Academy @Burke, Pico Rivera

WHAT OUR PARENTS HAVE TO SAY...



Nailah is seen alongside her best friend, Tianna, who is also part of our program.

Andrea, Parent of Nailah, Grade 7, Wright Middle School STEAM Magnet, Westchester
“The SEA Program helps to motivate her [Nailah]. She's been keeping her grades on track. She's been doing her work. I love that she is comfortable with her mentor/tutor.”



Jared is shown at our end-of-year ceremony alongside his mentor and tutor, Talia, his mom, and Ellen Shane, the Executive Director of ESF.

Rosa, Parent of Jared, Grade 6, Wright Middle School STEAM Magnet, Westchester
“I've definitely seen a progress in his work habits and his grades. I love that his mentor/tutor gets to know my son.”



Caleb celebrating his 8th grade culmination!

Marisela, Parent of Caleb, Grade 8, John Adams Middle School, South Los Angeles
“I'm the mother of Caleb Nájera, an 8th-grade student at John Adams Middle School. My son was struggling academically, so the school recommended tutoring to help him improve. They told me about a program that offered one-on-one tutoring, depending on availability and when the application was submitted.

Thank God, we didn't have to wait long. The program contacted me, we coordinated the schedule, and Caleb was assigned a tutor named Mohamed. He played a key role in helping my son successfully complete 8th grade.

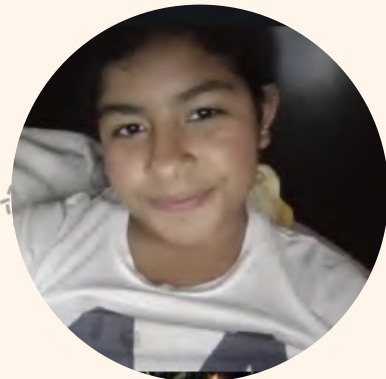
I'm deeply grateful to the program and all its staff. Thank you for the support you gave my son, Caleb. He learned so much through the tutoring sessions.”

GOOD DEEDS: OUR IMPACT GOES BEYOND THE ACADEMIC

To embrace our "Pass It Forward" motto, our SEA Program students are requested to perform a good deed or act of kindness for every session received. We aim to spread kindness in the world.



Peter, Grade 6, Northridge Middle School, Northridge
"I helped my mom in doing dishes and cleaning up around the house."



Mia, Grade 7, Malibu Middle School, Malibu
"I bought my friends snacks from the vending machines."



Leilani Garcia, Grade 8, Rivera Middle School, Pico Rivera
"I helped my cousin's dad, who has a disability, get out of the car."



Did something good lately?
Let us know by tweeting to
[@esfgooddeeds](https://twitter.com/esfgooddeeds)

Eben, Grade 7, North Park Middle School, Pico Rivera
"I helped my friend Alex get to the Nurse's office after he got hurt in school."



STAFF HIGHLIGHTS



WE ARE GRATEFUL FOR ALL OUR STAFF MEMBERS WHO MAKE EACH DAY POSSIBLE. HERE ARE JUST A FEW OF THEM!



ANA, MENTOR/TUTOR

“Hi, my name is Ana, and I’m a recent graduate of El Rancho High School. Being a mentor/tutor has given me the opportunity to give back to my community, support younger students, and remind them that they’re never alone on their learning journey.”

Ana served as a mentor/tutor to Anthony, an 8th grade SEA Program participant at North Park Academy of the Arts in Pico Rivera. She supported him in achieving major milestones—from earning his first 100% on a major math project to gaining peace of mind knowing he had someone in his corner to help when he felt confused.



MATEO, MENTOR/TUTOR



“Hi, my name is Mateo, and I’m a mentor/tutor with The Emily Shane Foundation’s SEA Program. It was really exciting to join the Emily Shane Foundation because I truly believe in its mission—helping students go from failing or getting D’s to passing their classes and truly excelling. I grew up attending a Title I school, and middle school was tough for me. As much as my teachers wanted to help, the schools were overcrowded, which made it hard to get the support I needed. I really wish I had someone in the kind of position I’m in now.”

This year, Mateo gained valuable experience in education as an in-person mentor/tutor for Andrew, a 6th grader at Clinton Middle School, and a remote mentor for Anthony at STEAM Academy @ Burke. With Mateo's help, both students improved from failing to passing grades in English.



SAM, SOCIAL MEDIA & MARKETING

“As a student of journalism and economics at LMU, I care deeply about the stories of those who have been historically underserved— and that’s what The Emily Shane Foundation is all about. I’m so grateful to contribute to a mission centered around equity, empathy, and impact.”

Sam has proven to be an outstanding asset to our social media and marketing student team. In just one year, Sam transformed vital documents into stunning visual creations that will serve us well for years ahead, significantly enhancing our ability to connect with our audience, as demonstrated by our fact document. Thank you, Sam, for your incredible talent in turning everything you engage with into a masterpiece that will contribute to our audience's growth.

ALUMNI HIGHLIGHT

VANESSA’S JOURNEY WITH THE SEA PROGRAM IS A FULL-CIRCLE STORY.



VANESSA, SEA PROGRAM ALUMNI

As a middle school student, Vanessa was part of the SEA Program—later returning as a dedicated mentor/tutor while pursuing her undergraduate degree at Cal Lutheran. Vanessa recently earned her Master of Science from UC Davis, and her passion for giving back continues to shine. “We need more programs like the SEA Program in our communities, and I really appreciate the work you put out,” she shared. “It was a full circle moment being a mentor/tutor at the middle schools. I still keep in touch with one of my mentor/tutors from middle school, actually.” Vanessa’s story is a testament to the lasting impact of mentorship and the power of investing in our youth.





Lindsay presented an orchid at the beginning of our WOM 2025 Live Auction.

VOLUNTEER SPOTLIGHT:

LINDSAY: A DEDICATED THIRD-GENERATION MALIBUAN

Lindsay is a proud third-generation resident of Malibu, deeply committed to serving her community. When she's not busy assisting The Emily Shane Foundation in connecting with key donors or managing our volunteers, she dedicates her time to The Grammy Music Academy. Thank you, Lindsay, for ensuring that The Emily Shane Foundation remains focused on our home community, Malibu.

"I feel deeply committed to the mission of The Emily Shane Foundation's SEA Program, as it reflects the academic difficulties I endured as a young child. At the age of four, I was diagnosed with Wilms' Tumor in both of my kidneys. Developmental challenges arose as a result of the chemotherapy and radiation treatments I underwent. Although these therapies saved my life, they left me with severe learning issues.

Living in Malibu in the 1990s, I did not have access to the extra tutoring and specialized learning support I needed to overcome these challenges. While I was fortunate to have the support of understanding parents who recognized my need for specialized instruction, many issues still went unaddressed. After years of academic struggle and social stigmatization, I was able to overcome the majority of my educational setbacks.

The Emily Shane Foundation reflects the critical need for accessible educational resources for children in underserved communities. I understand how vital this support is for students who face similar struggles. That's why I am committed to advancing the Foundation's mission and helping make a meaningful difference."



INTERESTED IN JOINING ESF:



The Emily Shane Foundation is looking for volunteers to serve as mentor/tutors during afterschool hours throughout the academic term. Sessions will be held twice a week for one hour each. Additionally, we welcome volunteers for various roles, including administrative assistants, social media support, marketing/PR, and participation in the ESF Event Fundraiser Committee.

We have an opening in our ESF Board for anyone passionate about our work and interested in maximizing our reach.

[CONTACT: INFO@EMILYSHANE.ORG](mailto:INFO@EMILYSHANE.ORG)

DRIVING CHANGE: A SAFER FUTURE ON PCH

From Tragedy to Action—Together, We’re Driving Change:

We are thrilled to announce that The Emily Shane Foundation has received a generous grant from HONDA to support the development of a mobile game, “21 Miles: Driving Change.” This vital funding allows us to bring our vision to life: creating an engaging and educational game that teaches young people safe driving habits, discourages distracted and reckless behavior, and prepares them for both the written and practical DMV driving tests—all in a fun, interactive format.



This project is a cornerstone of our foundation’s newer Driving Change division, which was launched to advocate for safer roads and in Emily’s memory—particularly on the Pacific Coast Highway (PCH), Malibu’s “Main Street.” Our Board Chair Michel Shane has been a leading voice in this effort. His award-winning documentary, 21 Miles in Malibu, brought attention to the human toll of this notoriously dangerous stretch of road.

In addition to the game, Michel authors a bi-weekly Driving Change column in The Malibu Times, spotlighting urgent PCH-related safety concerns and championing solutions for all who use the highway—pedestrians, cyclists, motorcyclists, and drivers.

Now that PCH has fully reopened following the long closure due to the dire impact of the Palisades Fire, there is a critical opportunity for redesign and reform. The City of Malibu and Caltrans are actively exploring improvements, and we are committed to ensuring that safety remains at the forefront of these discussions.

Join us in driving change—especially as Malibu sees a swell of summer visitors. Together, we can make our roads safer for everyone.



click here

LEARN MORE ABOUT OUR
SECOND DIVISION HERE!

UPCOMING EVENTS

ESF'S ANNUAL FALL FUNDRAISER TO BE ANNOUNCED

Plans are underway for our next Fall Fundraiser, and we're excited to share what's ahead! Each year, The Emily Shane Foundation hosts two major fundraising events - one in the fall and one in the spring - to support our mission and programs.

Last fall, we proudly presented "Wings and Waves of Achievement" at Pepperdine University. The event highlighted both of our Foundation's divisions, while guests enjoyed a fun carnival. A SEA Program student and her mother shared their powerful story, and representatives from key organizations connected to our Driving Change division - including the Malibu/Lost Hills Sheriff's, Caltrans, CHP, the Office of Traffic Safety. Others presented tabling and showed their strong support.

We're currently exploring ideas for this year's event and will send out a "Save the Date" as soon as plans are finalized.

Stay tuned—we hope you'll be part of it!

WINGS OVER MALIBU 2026

Wing Over Malibu 2026 is scheduled for **Thursday, April 23, 2026**. We look forward to continuing this cherished tradition for our 11th consecutive year. **Stay tuned for messaging and details in January 2026.**



YOU CAN SUPPORT OUR FOUNDATION EVERY TIME YOU SHOP AT RALPH'S!

1. Go into the Ralph's app.
2. Click on the "Rewards" section, then click "Community Contributions."
3. Type in "The Emily Shane Foundation" and be sure to click "Save."



click here

For more information, go to this link!

<https://www.ralphs.com/i/community/community-rewards>

This allows you to turn your usual purchases into contributions to help make our SEA Program possible. Thank you!

CATCH UP WITH ESF IN THE NEWS!

The Malibu Times

Driving Change: An Offer
Malibu Can't Refuse

<https://malibutimes.com/driving-change-an-offer-malibu-cant-refuse>

Patch

Malibu Opens City Grant Application
Window For Nonprofits

<https://patch.com/california/malibu/malibu-opens-city-grant-application-window-nonprofits-0>

The Malibu Times

Driving Change: Weaponizing Grief –
15 years after Emily

<https://malibutimes.com/driving-change-weaponizing-grief-15-years-after-emily>

The Malibu Times

Driving Change: A love letter to Malibu, more
than beauty in the sun

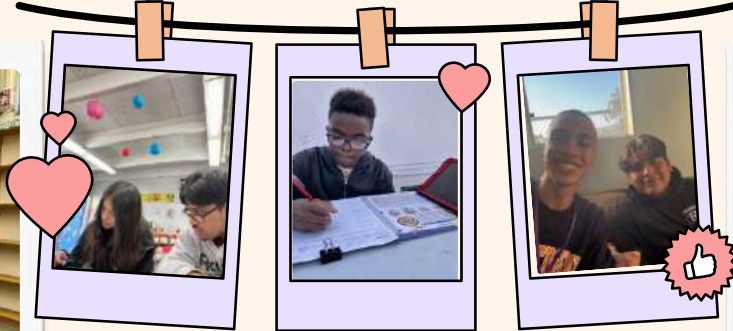
<https://malibutimes.com/driving-change-a-love-letter-to-malibu-more-than-beauty-in-the-sun>

The Malibu Times

Driving Change: From words to action, making
change happen in Malibu

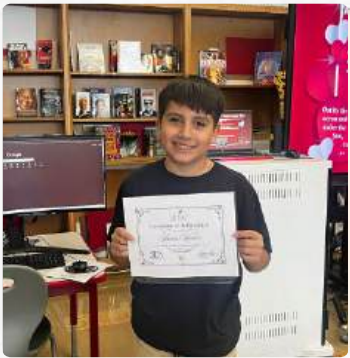
<https://malibutimes.com/driving-change-from-words-to-action-making-change-happen-in-malibu>



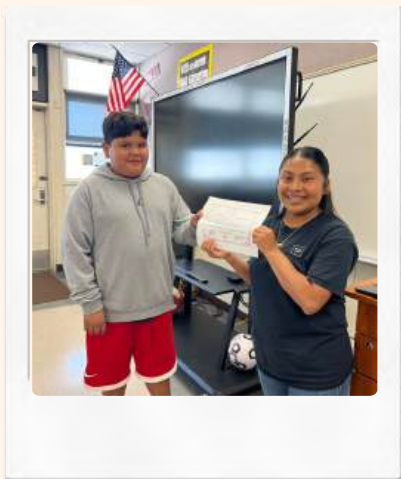


EMILY ROSE SHANE

08/09/1996 - 04/03/2010



EMILY, OUR FOUNDATION'S NAMESAKE, IS CAPTURED HERE AT THE AGE OF FOUR.





THE EMILY SHANE FOUNDATION

Wings Over Malibu 2025



Honoring City of Malibu Councilmember Haylynn Conrad

Presented by The Malibu Project

Presenting Event Sponsor:

The Malibu Project

In-Kind Sponsors:

Postal Annex+ Malibu
The Malibu Times

Silver Sponsors:

C.A. Hartnell
Southern California Gas Company

Wine Sponsor:

Hoyt Family Vineyards

ESF Fundraiser Event Committee:

Barbara Avishay
Emily Elizabeth
Lisa Ellis
Mary Fernandez
Paola Godinez

Harege Kebede
Kelly Kincaid
Lindsay Roberts Miller
Emily Schmidt-Goldstein
Ellen Shane

Special Acknowledgments

Cafe Habana Malibu
City of Malibu Councilmember -
Haylynn Conrad
Dance Star Malibu - Charissa Seaman
Harpist Radha Botofasina

Antonio Alessi
Robin Hild
Jasmind Jones
Les Sabler
Kyle Stuart



Wings Over Malibu 2025



Honoring City of Malibu Councilmember Haylynn Conrad
Presented by The Malibu Project

We are grateful to our donors!

Funds raised help support The Emily Shane Foundation's SEA (Successful Educational Achievement) Program which empowers the lives of underserved middle school students across Los Angeles and Ventura Counties. This year, a percentage of proceeds will also directly benefit victims of the wildfires in our SEA Program.

Live Auction:

Duke's Waikiki
E-Adventure Bike Company
Four Seasons Hotel Los Angeles at Beverly Hills
Gabrielle Reece & Laird Hamilton
HĒDO
Master Magician Shawn McMaster

Michel Shane
One Moon
Pali Adventures Summer Camp
Porto Elounda Golf & Spa Resort, Crete
Sunset Royal Beach Resort, Cancun
The Twin Fin Hotel, Waikiki

Silent Auction:

A Noise Within Theatre
Aviator Nation Dreamland
Ayres Hotel
Azar Plastic Surgery and Med Spa
BarkBox
Battleship USS Iowa Museum
Beverly Hills MD
Caroline Arnold, Author
Chance Theater
Charlaine Harris
Desert Adventures Kayak Las Vegas
Chipotle
Cline Cellars
Coronado Playhouse
Coverall Signs
Craft Wealth Services
CruiseCompete
Desert Adventures Kayak
Elite Fitness Plus
FabFitFun
Fairmont Miramar Hotel & Bungalows
Fiesta Village
Flappers Comedy Club
Fountain Valley Skating Center
Gagosian Beverly Hills
Geffen Playhouse
Geoffrey's Malibu
Go Kart World
Gorjana
Green Street Restaurant
Historic Pasadena Playhouse
Hollywood Wax Museum

Howdy's Malibu
Illusion Magic Lounge
Irvine Lanes
Island Packers Cruises
Jack in the Box
Jacuzzi Family Vineyards & The Olive Press
Jay Gibbons
J Home Malibu
Kidspace Children's Museum
Knott's Berry Farm
Kristy's Cafe
La Nena
Lucky Feet Shoes
Malibu Strong
Malibu Tailoring
Mehrnoosh Architecture/Urban Design
Morgan-Wixon Theatre
Moye Thompson Ceramics
MOXI, The Wolf Museum of Exploration + Innovation
Musical Theatre West
Natural History Museum Los Angeles
Newport Landing
New West Symphony
Olio e Limone Ristorante
Pacific Chorale
Pacific Park Santa Monica Pier
Palm Garden Hotel
Panera Bread
Pasadena Playhouse
PEJU Winery
Penn & Teller

Petersen Automotive Museum
Petra Conti of Hollywood Ballet
Philharmonic Society of Orange County
Polynesian Cultural Center
Raising Cane's
Santa Anita Park
Santa Monica Playhouse
Scott's Malibu
Sea n' Soul
Shapetress
Shibumi Shade
Six Flags Magic Mountain
Skirball Cultural Center
Sky Sailing, Inc
Smoke House Restaurant
Sojourn Cellars
Sole Soup
South Point Hotel, Casino & Spa
SweetBu Candy Co.
Tahoe Donner Skiing
The Canyon - Agoura Hills
The Huntington
Tieks
Toy Crazy
Twelve28 Malibu
USS Midway Museum
Wallis Annenberg Center for Performing Arts
Wheel Fun Rentals
Will Geer Theatricum Botanicum
Zachari Dunes on Mandalay Beach
Zin Bistro Americana

A special thank you to Emily Schmidt-Goldstein for her significant efforts in making our auctions possible.

* We make every effort to include all donors, and we sincerely apologize for any inadvertent errors or omissions.

emilyshane.org

