

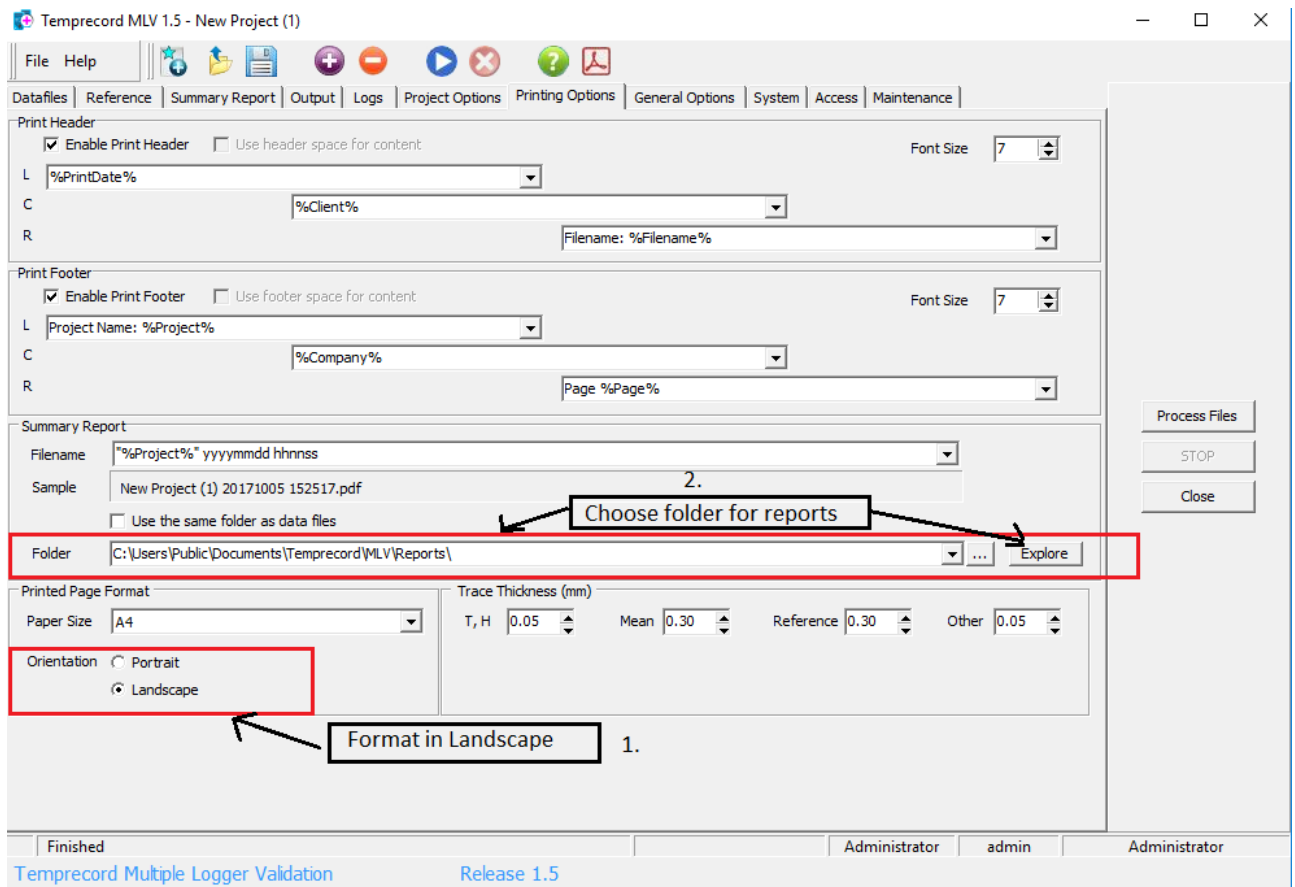


When product integrity counts...

Manufacturers of laboratory calibrated temperature and humidity data loggers, real-time monitoring and cold chain solutions

## MLV Mapping Software – Tips

1. Format your report in landscape – provides a much better presentation. See image below which is on the Printing Options Tab.



2. Choose a folder to automatically save your files to. Please note that all files generated will automatically be saved to this folder, but the file can still be saved manually elsewhere as well. See image above which is on the Printing Options Tab.

Temprecord International Limited

PO Box 58-430, Botany 2163 | 239D Burswood Drive, East Tamaki 2013 | Auckland, New Zealand

Phone +64 9 274 9825 | Fax +64 9 273 4020 | Email info@temprecord.com

www.temprecord.com



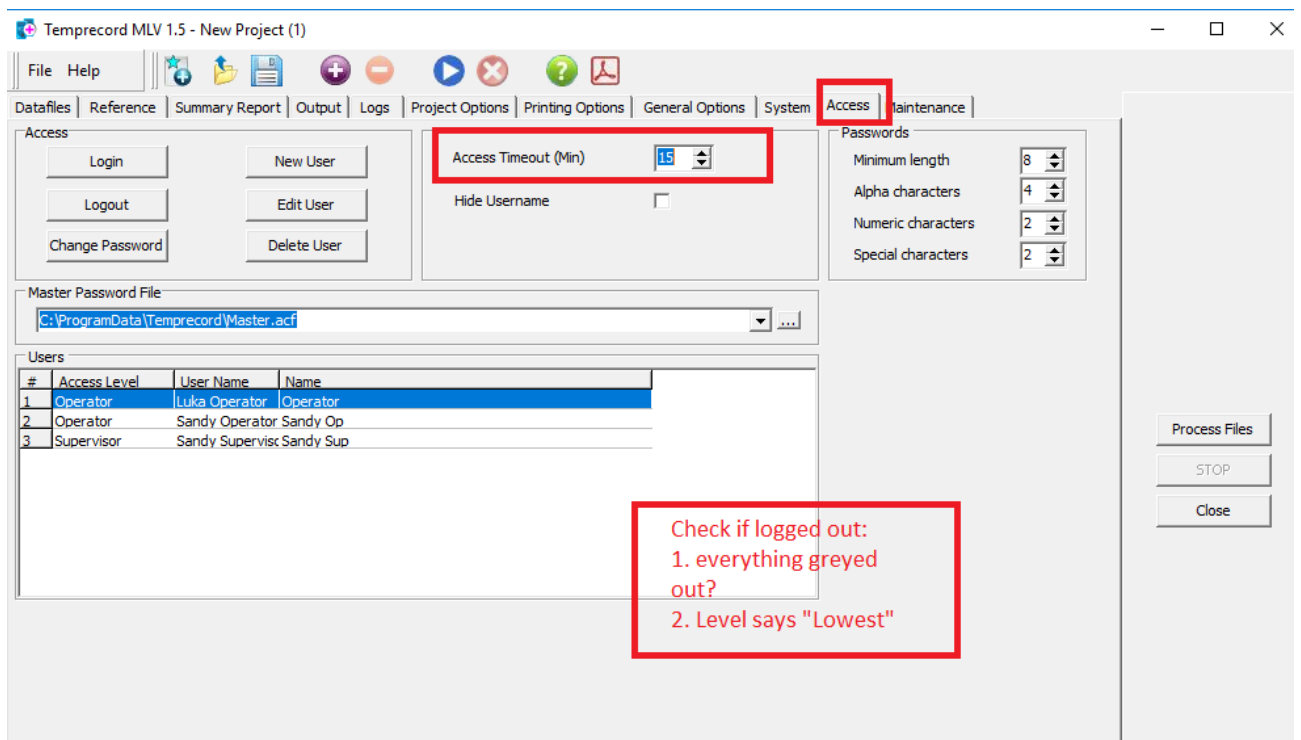
IANZ accredited to ISO/IEC 17025 standards

3. Do not move the following files after creating your MLV reports:

- TRW data logger files
- MLV file (or project)

There is a file-path created (the files are associated) therefore if either are moved then the file-path is broken. You may then see ☹ in MLV.

4. Is MLV timing out before you are finished your task? Go to the Access Tab and increase the Access Timeout.



- Input Data Logger position into report on the Datafiles Tab and have it read out on the Summary page of the PDF report.

Temprecord MLV 1.5 - New Project (1)

File Help

Datafiles | Reference | Summary Report | Output | Logs | Project Options | Printing Options | General Options | System | Access | Maintenance

Files to process

Filename	ID	Folder	Size	Date	S/N	Version	Period	Samples	From	Until
✓ #1.tr	top shelf left	S:\MLV\	6338	Thu 19 Mar 2	M0099202	3.2.14.0	10m 0s	400	Tue 24 Feb 2015 15:28:41	Fri 27 Feb 2015 09:58:41
✓ #2.tr	top shelf right	S:\MLV\	7754	Thu 19 Mar 2	M0099201	3.2.14.0	10m 0s	1108	Tue 24 Feb 2015 15:26:18	Wed 4 Mar 2015 07:56:18
✓ #3.tr	middle shelf left	S:\MLV\	7758	Thu 19 Mar 2	M0099199	3.2.14.0	10m 0s	1110	Tue 24 Feb 2015 15:28:43	Wed 4 Mar 2015 08:18:43
✓ #4.tr	middle shelf right	S:\MLV\	7758	Thu 19 Mar 2	M0099198	3.2.14.0	10m 0s	1110	Tue 24 Feb 2015 15:31:41	Wed 4 Mar 2015 08:21:41
✓ #5.tr	lower shelf	S:\MLV\	7758	Thu 19 Mar 2	M0099200	3.2.14.0	10m 0s	1110	Tue 24 Feb 2015 15:34:19	Wed 4 Mar 2015 08:24:19

Enter placement location of loggers

Process Files  
STOP  
Close

See PDF report below.

6/10/2017 12:48:35 PM Client Filename: New Project (1) 20171006 124835.pdf

### Temprecord MLV Summary Report

MLV Release 1.5

**Signed**

Client  
Site  
Report by  
Logged in Windows User  
Date Printed  
Report Filename  
Project Name  
Project Description  
Report Type  
Temperature Reporting Interval  
Temperature Reporting Duration  
Temperature Reference  
Upper Limit  
Lower Limit

Client  
Site  
Temprecord International Ltd.  
Sandyk  
Fri 6 Oct 2017 12:48:35  
New Project (1) 20171006 124835.pdf  
New Project (1)  
Enter a description for the project Enter a description for the project  
Temperature only  
Tue 24 Feb 2015 15:34:19 to Fri 27 Feb 2015 09:58:41  
66:24:22  
No reference selected  
8.00 °C  
2.00 °C

The following summary report was obtained from the loggers listed below.

The entire temperature sample record (more or less) for each logger was analyzed. The reporting interval has been reduced to an interval that includes the time interval logged by every logger. The actual reporting interval is Tue 24 Feb 2015 15:34:19 to Fri 27 Feb 2015 09:58:41. The actual number of samples analyzed and the time they span is shown with each logger.

### Temperature Results

Logger	ID	Firmware	Samples	From	To	Min	Max	Range	Below	Above	Mean	S. D.	Variance
M0099202	top shelf left	3.2.14.0	399	24-02-15 15:38:41	27-02-15 09:58:41	19.709	26.854	7.145	0:00:00	66:30:00	22.674	1.990	3.958
M0099201	top shelf right	3.2.14.0	399	24-02-15 15:36:18	27-02-15 09:56:18	19.701	27.040	7.339	0:00:00	66:30:00	22.723	2.017	4.067
M0099199	middle shelf left	3.2.14.0	399	24-02-15 15:38:43	27-02-15 09:58:43	19.276	26.825	7.549	0:00:00	66:30:00	22.391	2.091	4.371
M0099198	middle shelf right	3.2.14.0	400	24-02-15 15:31:41	27-02-15 10:01:41	19.665	27.176	7.511	0:00:00	66:40:00	22.683	2.027	4.109
M0099200	lower shelf	3.2.14.0	399	24-02-15 15:34:19	27-02-15 09:54:19	19.654	27.706	8.053	0:00:00	66:30:00	22.693	2.048	4.192
Mean of loggers			399	24-02-15 15:34:19	27-02-15 09:54:19	19.601	27.120	7.519	0:00:00	66:30:00	22.631	2.033	4.131
Variance			399	24-02-15 15:34:19	27-02-15 09:54:19	0.004	0.166	0.162			0.028		
SD			399	24-02-15 15:34:19	27-02-15 09:54:19	0.061	0.407	0.347			0.161		
Spread			399	24-02-15 15:34:19	27-02-15 09:54:19	0.148	0.968	0.820			0.395		
All Loggers			1996			19.276	27.706	8.430			22.633		

Project Name: New Project (1) Temprecord International Ltd. Page 1

6. Does the trace go through the key on the graph in the PDF report?  
Go to the Summary Tab and adjust the Temperature axis limits to suit.

