

SSW Group Ltd – Case Study



Project Overview

SSW Group Ltd was contracted to deliver a comprehensive façade and finishing package in partnership with **XPRT**. The project involved the installation of water pipe systems, vertical aluminium panels, flashings, and the fitting and sealing of 18 doors and windows.

The total project area covered approximately **800 square metres**, completed efficiently and to a high standard of workmanship within a 5-week programme.

Scope of Work

The works were delivered in a structured sequence to ensure precision and safety:

1. Installation and coordination of water pipe systems
2. Supply and installation of vertical aluminium panels
3. Installation of flashings to ensure weather protection and durability
4. Fitting of 18 doors and windows, Mastic sealing to all door and window perimeters for airtight and watertight performance

Compliance & Reporting:

- Full Installation Records

All works were documented with quality checks and completion records to ensure full traceability.

- Live Project Tracking

Daily progress, inspections, and snagging tracked digitally for streamlined delivery.

Materials Used

- Aluminium vertical cladding panels
- Flashings and associated weatherproofing components
- Water pipe systems and fittings
- Doors and windows (18 units total), High-performance mastic sealants

Challenges & Solutions

- **Programme Efficiency** – Careful planning and sequencing enabled completion of the full 800m² scope within 5 weeks.
- **Quality Assurance** – Attention to detailing, particularly around flashings and mastic sealing, ensured a clean finish and long-term durability.

Client Feedback

XPRT commended SSW Group Ltd for consistent workmanship, proactive coordination, and efficient sequencing that supported programme certainty across the tower.

Results

- 800m² project completed within 5 weeks
- Installation of water pipes, aluminium vertical panels, and flashings successfully delivered
- 18 doors and windows fitted and professionally sealed
- Works completed quickly, efficiently, and to a high-quality standard

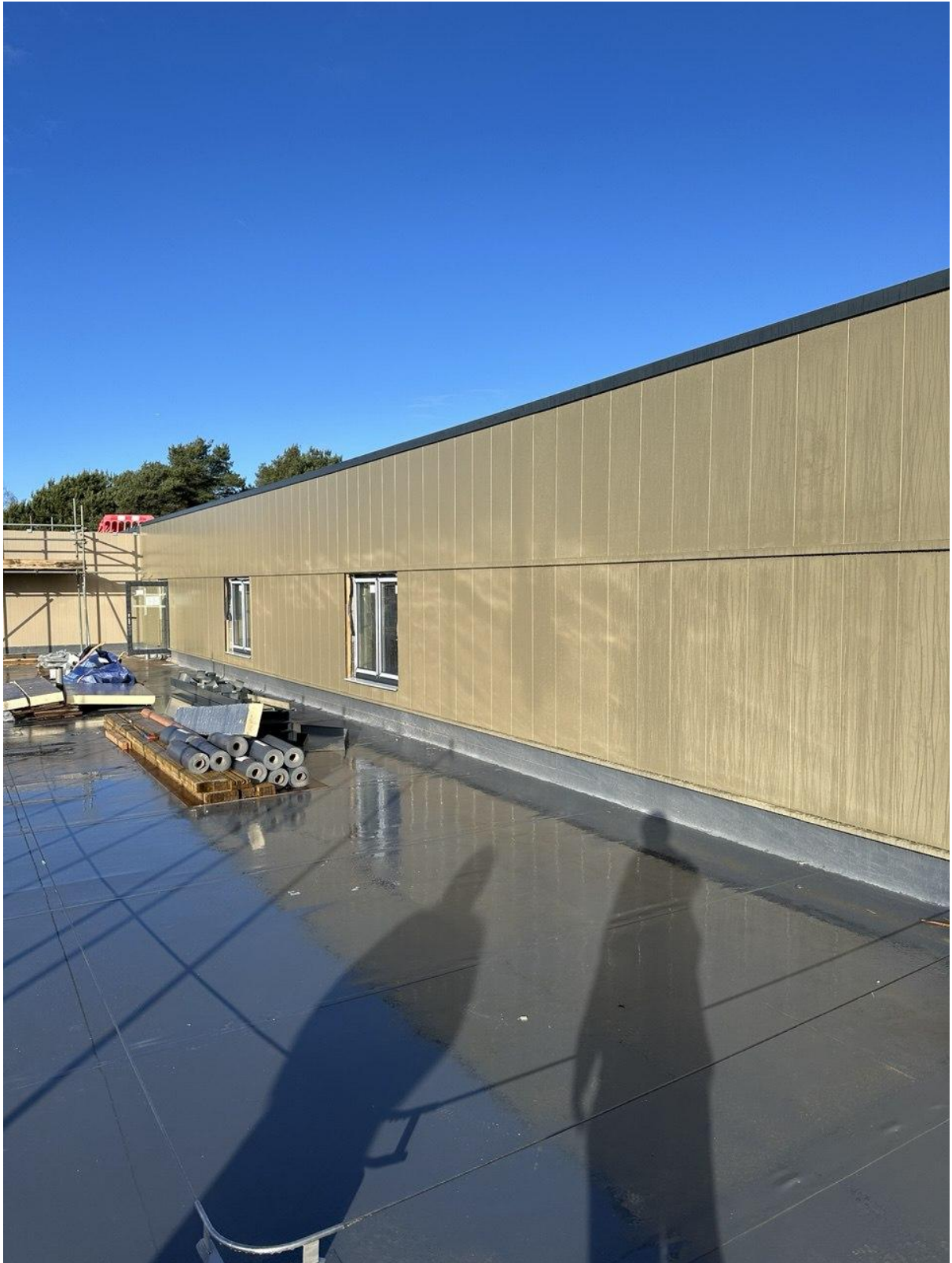


Photo Document









