



SUN BOWL
STADIUM
THE UNIVERSITY OF TEXAS AT EL PASO

TECH SHEET



GENERAL INFORMATION

- Loges and GECU Terrace (see page 8-9)
 - Outdoor Bar
 - 26 loges each with a 6 seat capacity, premium chairs, refrigerator and television screen
- Hunt Family Sky Lounge (see page 5-7)
 - Indoor Club with seating capacity of 134
 - 4 Private suites each with a capacity of 18 seats
 - Wet Bars and Catering spaces
- Hunt Family Sky Lounge Floor Plan (see page 4)
- Party Deck & GECU Terrace Floor Plan (see page 8)
- Sun Bowl West Side Floor Plan (see page 10)
- Sun Bowl West Side TV Production Lot Floor Plan (see page 11)
- Press Box (see page 12)
- 4th floor above Hunt Family Sky Lounge provides places for video camera for televised events
- Approx. 7,900 parking spaces surrounding the Sun Bowl
- Seating Chart with Capacity (See page 13)
 - 180 line = 46,093
 - 220 line = 50,292
 - 240 line = 54,373

SUN BOWL SPECIFICATIONS

Power:

200 amps, 3-phase at south end of tunnel below the scoreboard
TV Truck Dock power
2- 100A 208V disconnects

Sound:

Point source at south end above scoreboard
Control in west side press box
Microphone inputs on each side of field at 30-yd. line

Loading:

Tunnel on south side
Ramp 24' 10" wide, 82' long
Trucks can load onto field

Dressing Rooms (see page 3)

Locker room and dressing room with showers and restrooms each side of the tunnel downstairs
Large rooms each side of tunnel upstairs
Locker Rooms Floor Plan:
Lower East Locker Rooms
Lower West Locker Rooms
Upper East Locker Rooms
Upper West Locker Rooms

Intercom:

3-pin xlr jacks on each side of field at 50-yd. line
Control in west side press box
ClearCom intercom

Production Phones:

In house

Concessions:

18 concession stands

Click the link below to access labeled images of the stadium layout:

https://minersutep-my.sharepoint.com/:f/g/personal/mfcavazosvalde_utep_edu/IgDqhX50Pmk2T6ljPnBd_ZUIAb7JTufH2ysOmkMdn6k8uV4?e=e14vFs

For Production Advance, please contact:

General Manager: JORGE VAZQUEZ
Phone: (915) 747-7467
Email: vazquezj@utep.edu

Booking Director: JORGE VAZQUEZ
Phone: (915) 747-7467
Email: vazquezj@utep.edu

Ticketing Director: JULIO DE LA VEGA
Phone: (915) 747-6681
Email: jdelavega@utep.edu

FOH/Marketing Manager: BRANDON MARTINEZ
Phone: (915) 747-5623
Email: bgmartinez4@utep.edu

Production Advance/CAD: RICKY NICHOLS
Phone: (915) 747-6228
Email: rlnichols@utep.edu

BOH/Operations Manager: EFREN LICON
Phone: (915) 747-5699
Email: elicon10@utep.edu

Security: FELICIA BAYLESS
Phone: (915) 493-7536
Email: felicia.bayless@garda.com

Local Catering: MARY BARRAZA - ENCORE CATERING
Phone: (915) 731-0215
Email: mary@encorecateringco.com

Merchandise/Concessions: JIM HARRISON - EVENT MERCH
Phone: 2145021760
Email: jim@heventmerch.com

Local Labor/AV: SCOTT BROWN
Phone: (915) 433-3446
Email: scott@srbpro.com

Additional Merch/Concessions: GINA SANCHEZ - EVENT MERCH
Phone: 2142677169
Email: gina@heventmerch.com

Settlement: LINDA BRASWELL
Phone: (915) 747-7468
Email: lbraswell@utep.edu

Runners: ERIKA ARELLANO – Upstage
Phone: (915) 497-8698

- Venue does not source vehicles, must go direct for securing vans/vehicles.
- If Runner Payment is to be through settlement, prior advance notice needs to be made.

Always CC Jorge Vazquez for TICKETING and also CC:

Brandon Martinez - bgmartinez4@utep.edu

Julio de la Vega - jdelavega@utep.edu

Ana Ruiz - akruiz@utep.edu

DRIVING DIRECTIONS TO SUN BOWL STADIUM

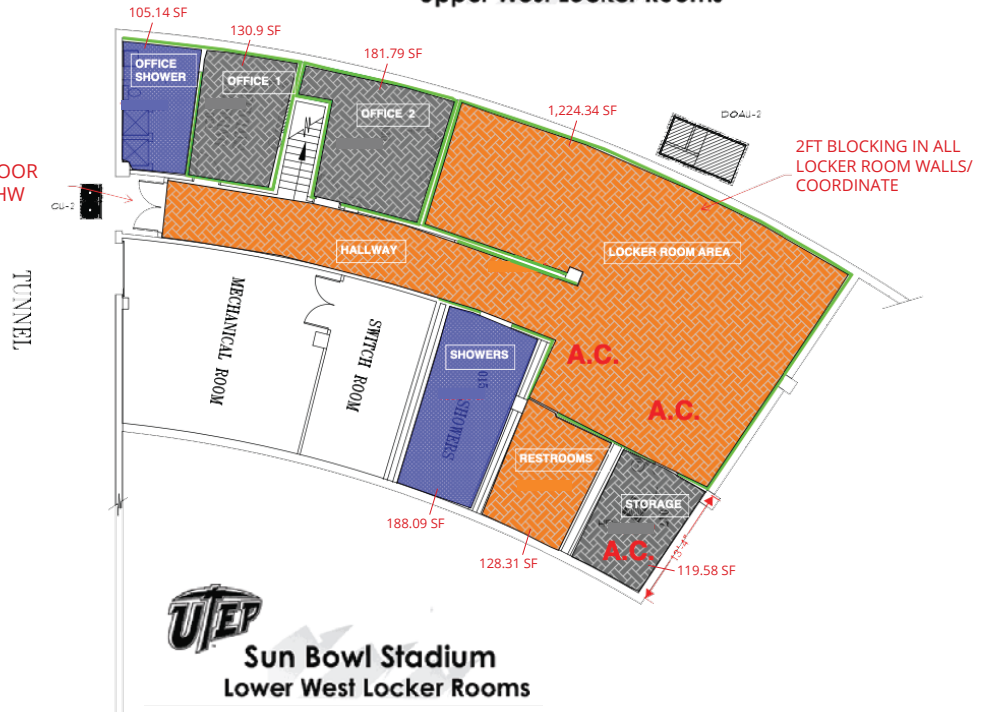
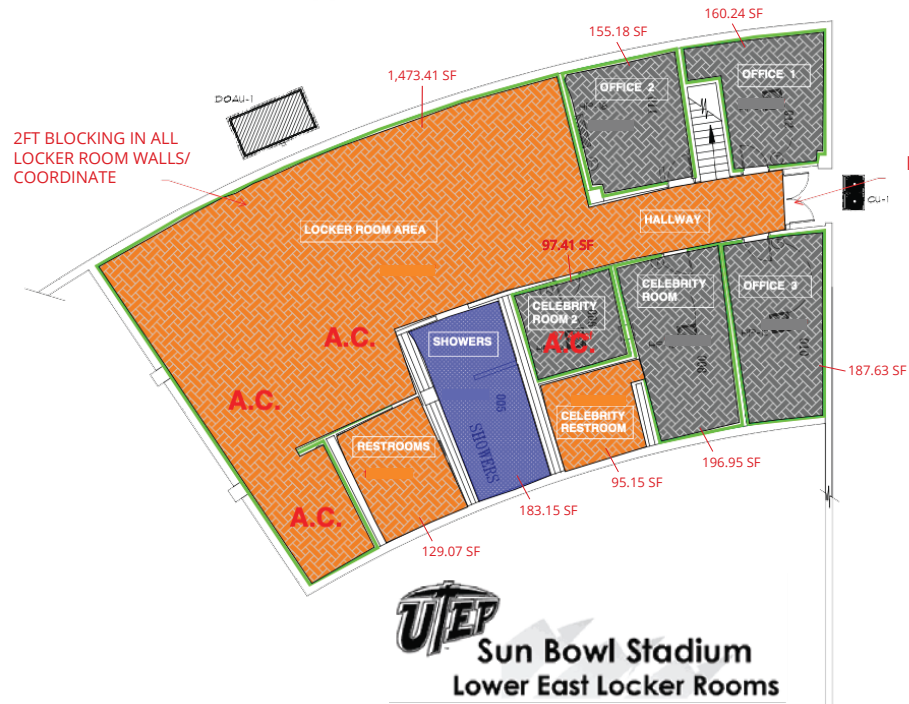
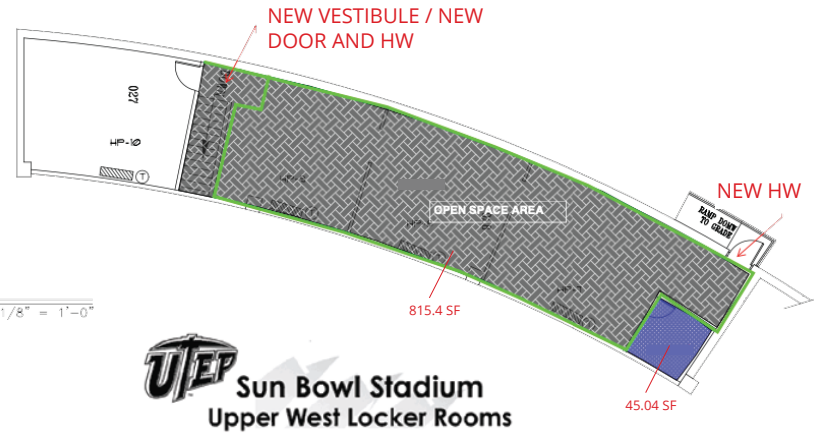
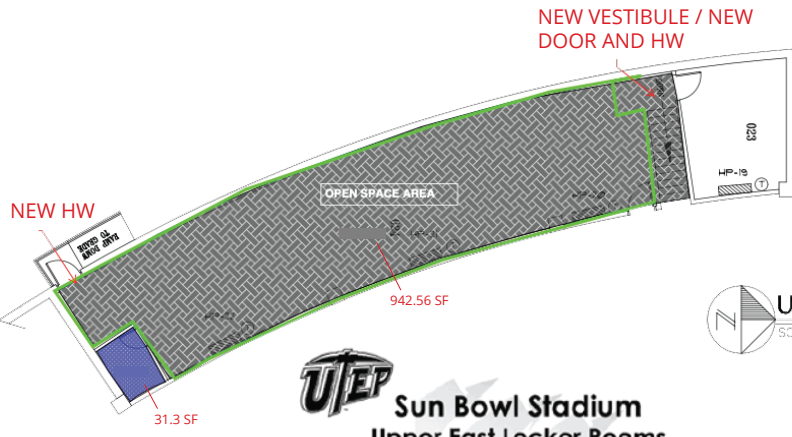
From Interstate 10 (East):

Take the Schuster/Sun Bowl exit (18A) to Sun Bowl Drive. Proceed onto Sun Bowl Drive. Continue towards the roundabout and go straight. At the second roundabout, take a right onto Glory Road. The Sun Bowl Stadium will be on the right.

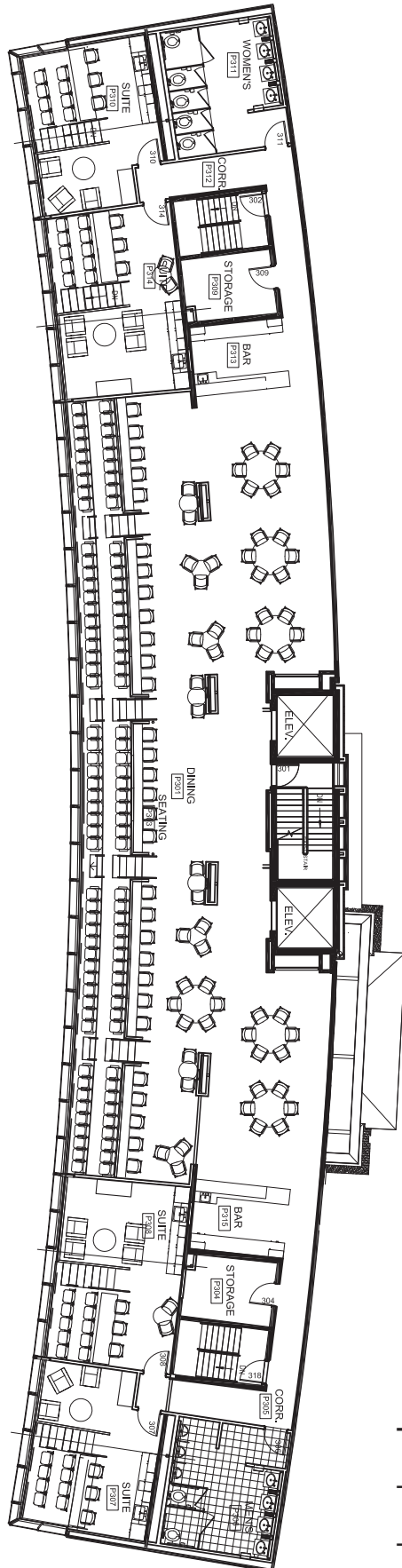
From Interstate 10 (West):

Take the Schuster/Sun Bowl exit (18A) to Sun Bowl Drive. Turn left at the light (Schuster Avenue). At the next light (Sun Bowl Drive), take a left onto Sun Bowl Drive. Continue towards the roundabout and go straight. At the second roundabout, take a right onto Glory Road. The Sun Bowl Stadium will be on the right.

LOCKER ROOM FLOOR PLANS

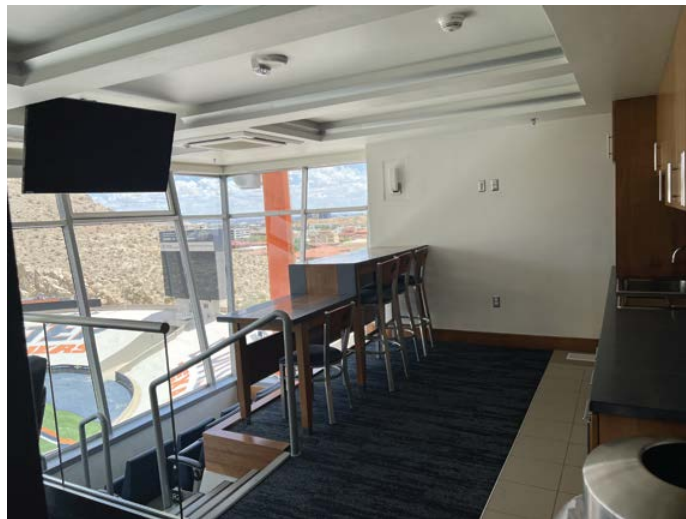
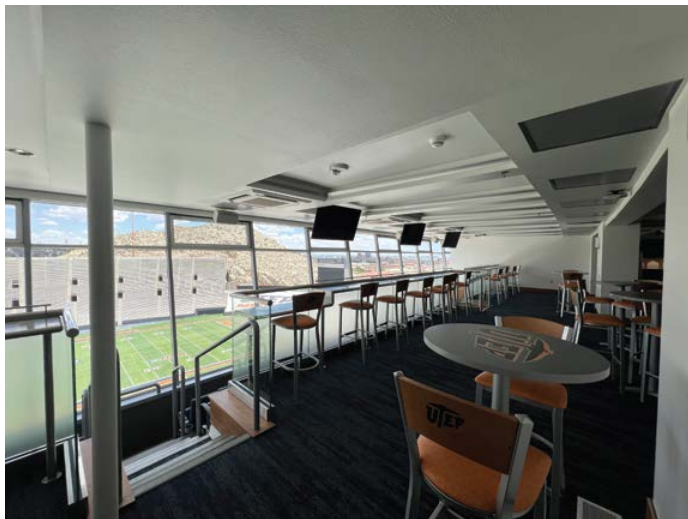


HUNT FAMILY SKY LOUNGE



- Indoor Club with seating capacity of 134
- 4 Private suites each with a capacity of 18 seats
- Wet Bars and Catering spaces

HUNT FAMILY SKY LOUNGE



HUNT FAMILY SKY LOUNGE SUITES



HUNT FAMILY SKY LOUNGE

SOUTH WING



NORTH WING

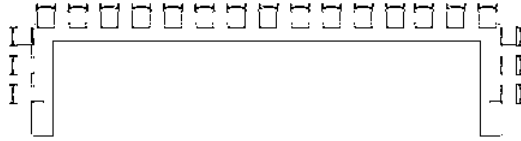


PARTY DECK AND GECU TERRACE

SUN BOWL – FINAL OUTDOOR SEATING AND TABLES

BAR SEATING

- SEATS APPROX. 36
- BAR HEIGHT STOOLS

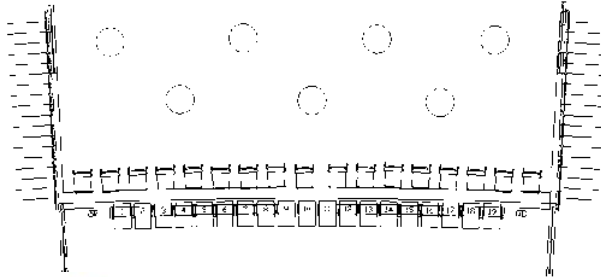


BAR HEIGHT STOOLS

SUN BOWL – FINAL OUTDOOR SEATING AND TABLES

TERRACE

- SEATS APPROX. 17
- BAR HEIGHT STOOLS
- QTY 7- 30" D BAR HEIGHT TABLES (NO CHAIRS)



BAR HEIGHT TABLES



BAR HEIGHT STOOLS

SUN BOWL – FINAL OUTDOOR SEATING AND TABLES

PARTY DECK

- SEATS APPROX. 108
- BAR HEIGHT TABLES- 23/ BAR HEIGHT STOOLS-92
- STANDARD HEIGHT TABLES- 4/ STANDARD CHAIRS-16 (ADA compliant)



BAR HEIGHT STOOLS



BAR HEIGHT TABLES



STANDARD CHAIRS



STANDARD TABLES-ADA COMPLIANT

GECU TERRACE



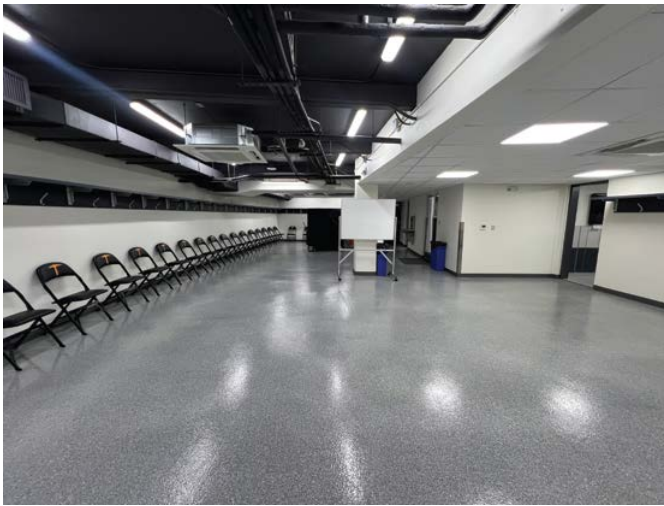
LOGES



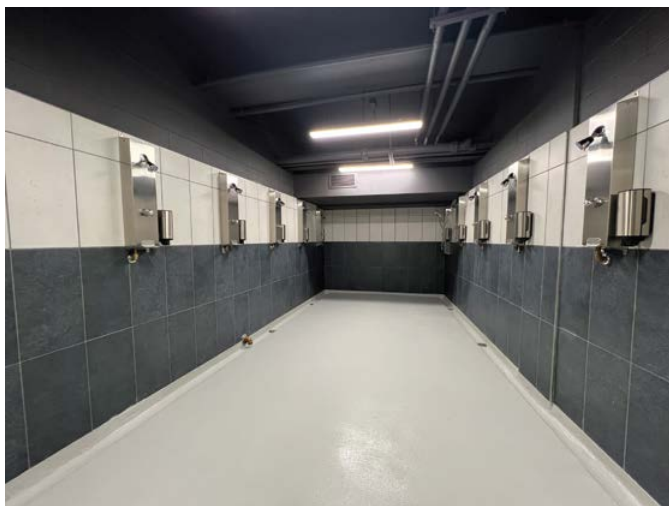
LOCKER ROOMS (HOME TEAM)



Upper Level Locker Rooms (Home Team)



Lower Level Locker Rooms (Home Team)



Locker Room Showers



Locker Room Restrooms

LOCKER ROOMS (HOME TEAM)



Breakout Room



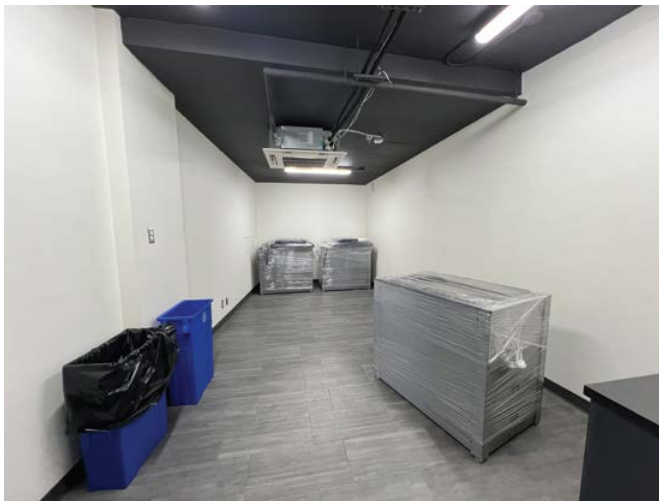
Coaches Showers



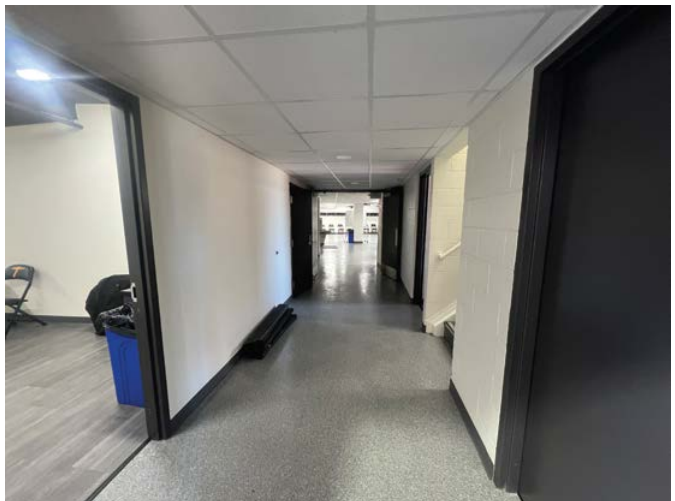
Coaches Room



Manager's Equipment Room

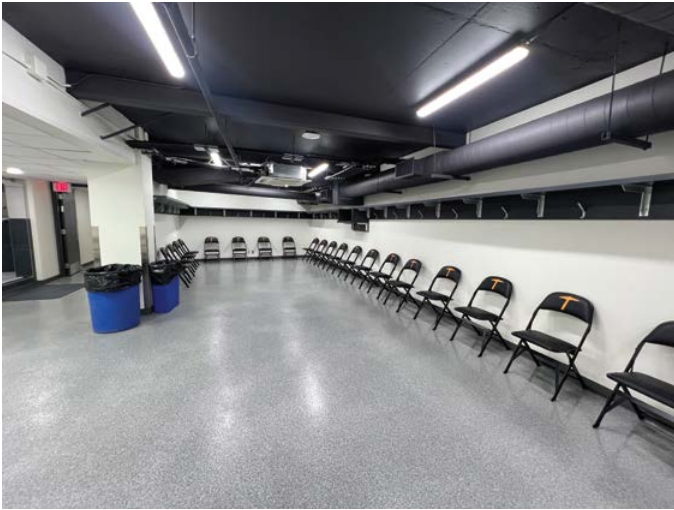


X-Ray Room

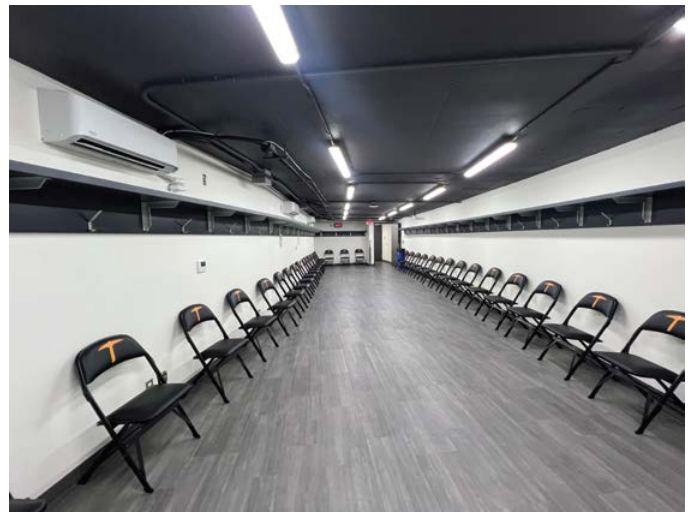
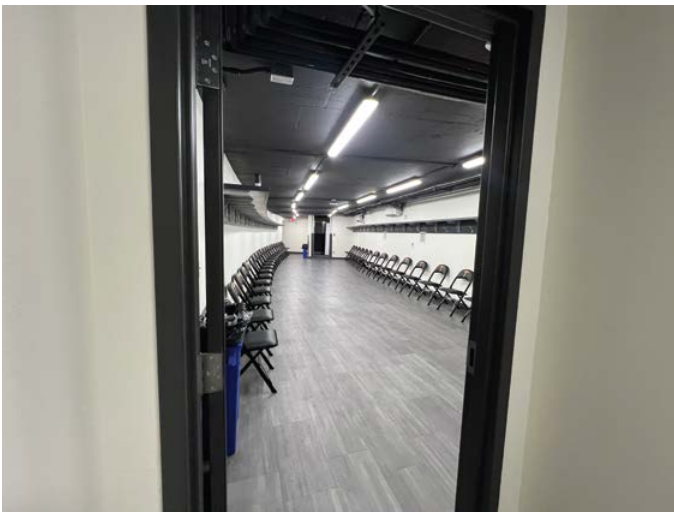


Hallway next to Trainer's Room

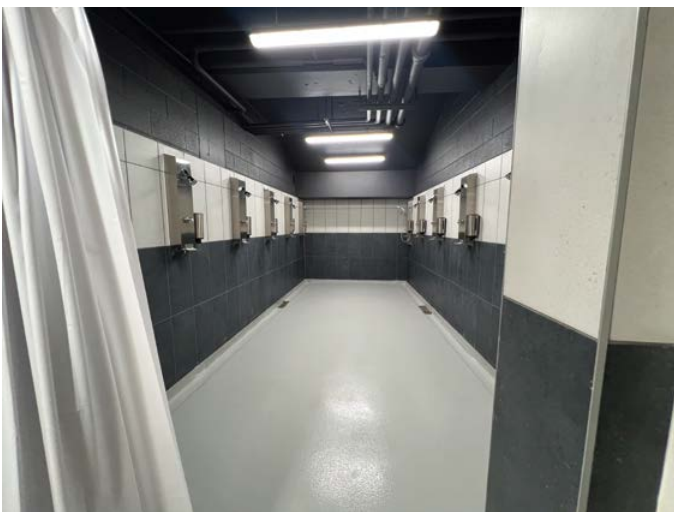
LOCKER ROOMS (VISITING TEAM)



Lower Level Locker Rooms



Upper Level Locker Rooms



Lower Level Showers



Lower Level Bathrooms

LOCKER ROOMS (VISITING TEAM)



Hallway



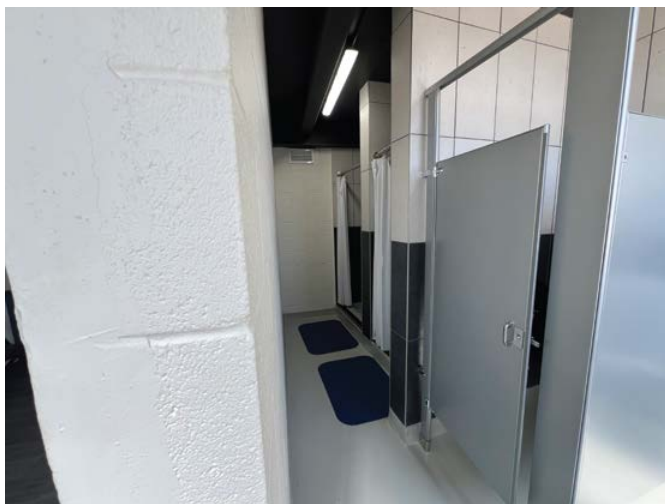
Coaches Room



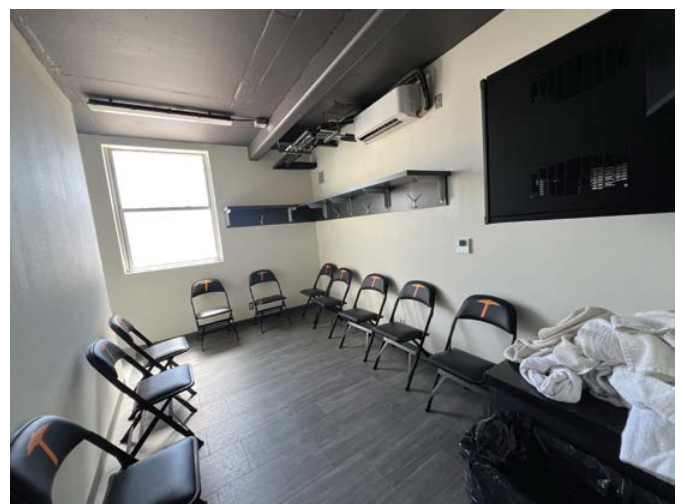
Trainer's Room



Upper Level Showers



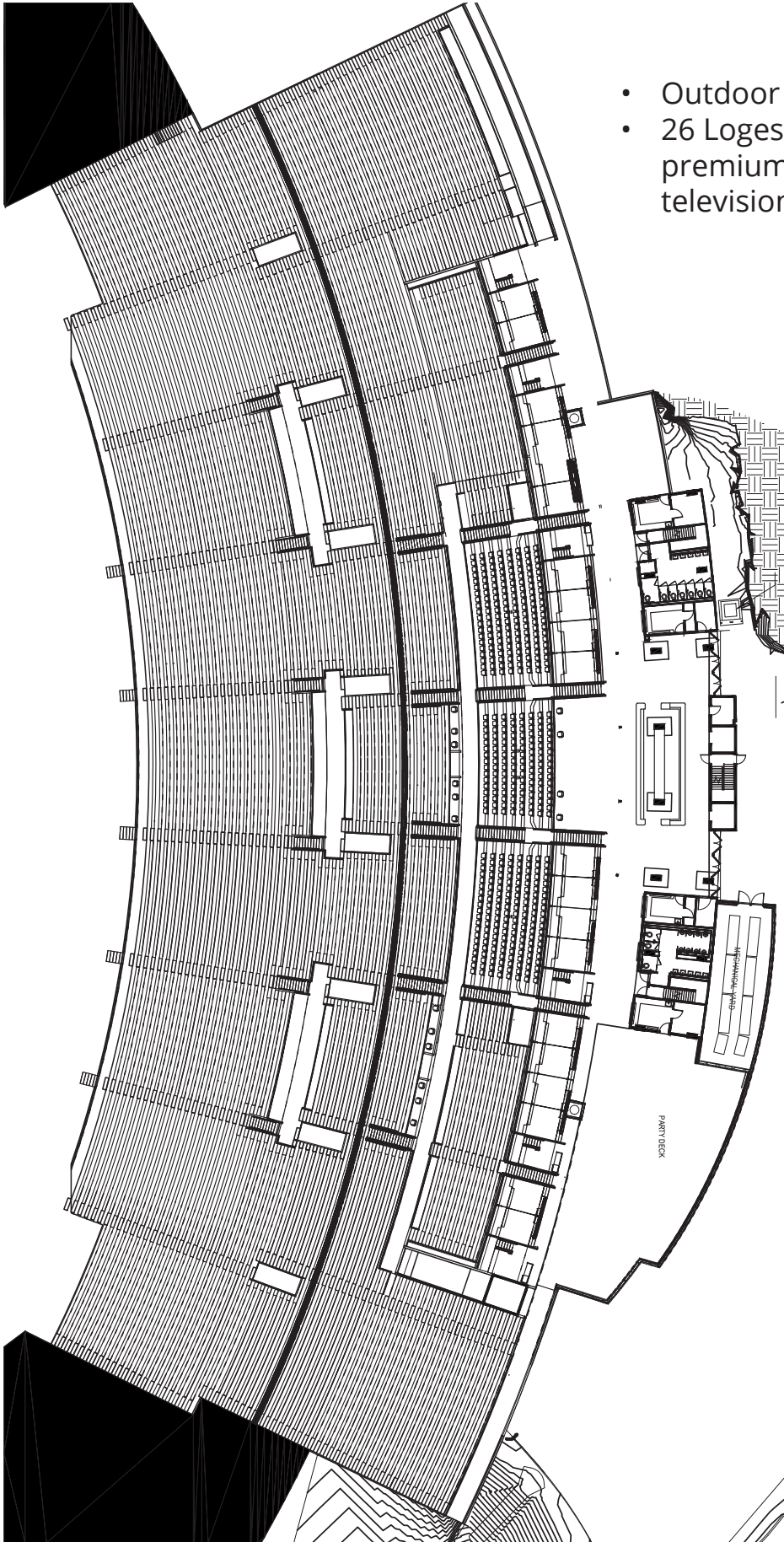
Officials' Bathroom



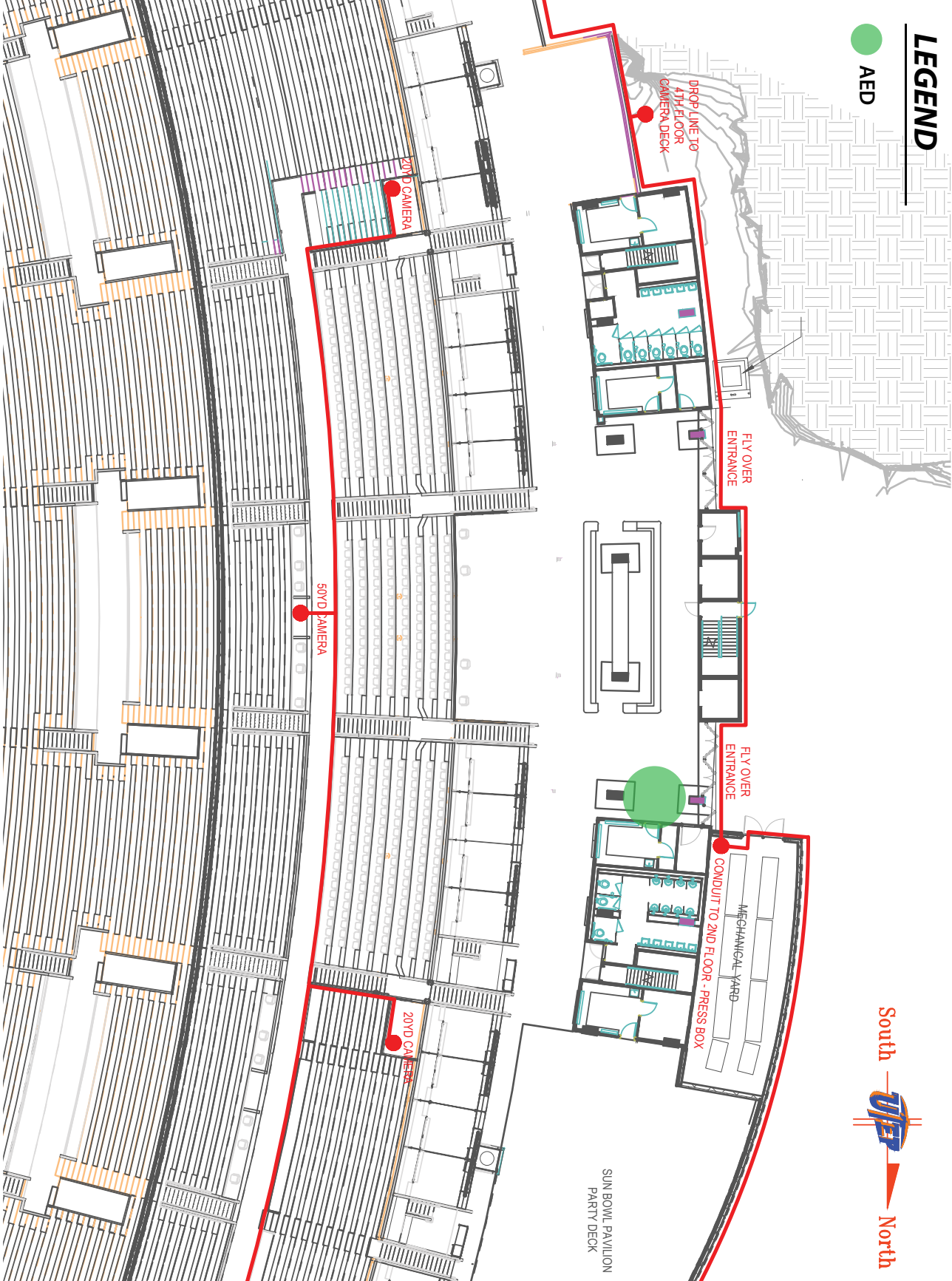
Officials' Room

LOGES/GECU TERRACE

- Outdoor Bar
- 26 Loges each with a 6 seat capacity, premium chairs, refrigerator and television screen

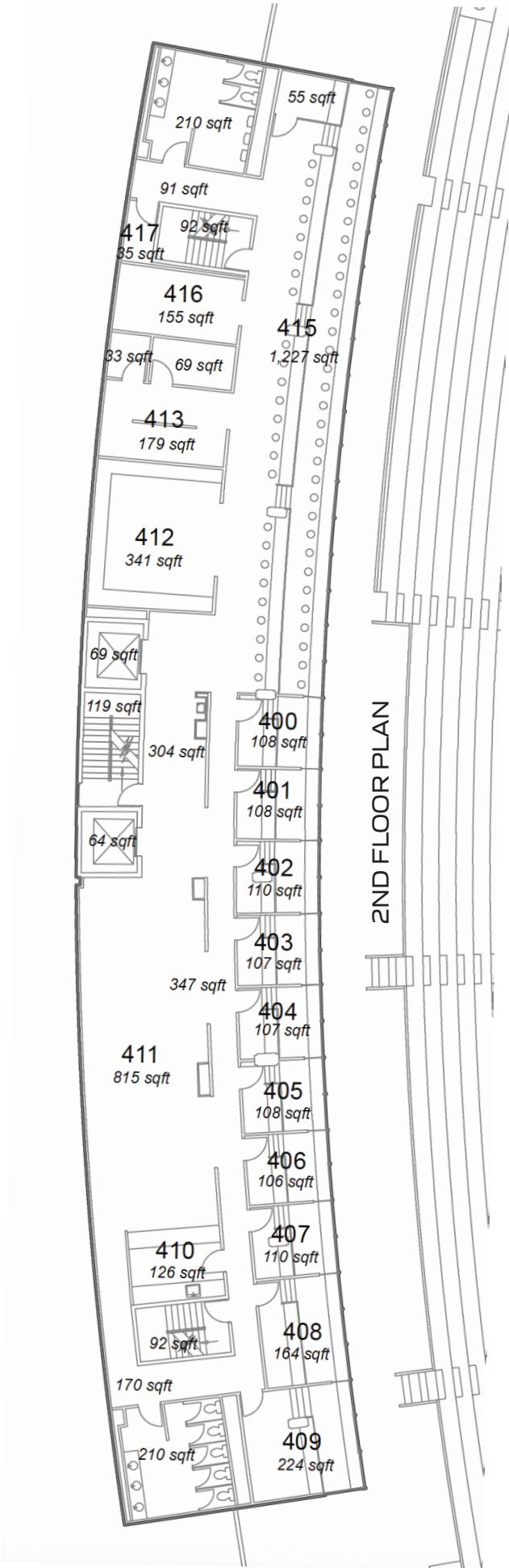


SUN BOWL WEST SIDE TV PRODUCTION LOT

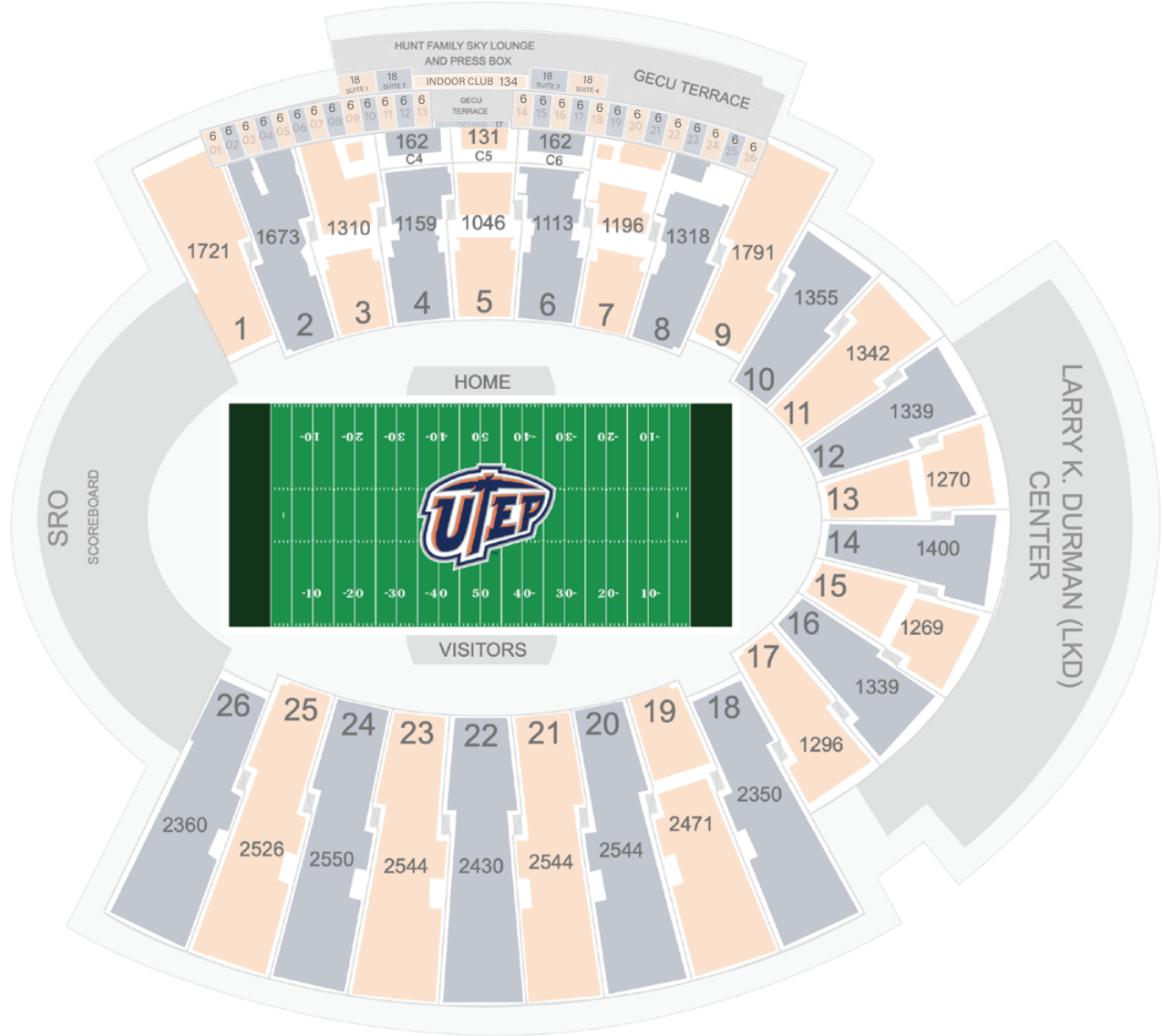




PRESS BOX



SUN BOWL CAPACITY

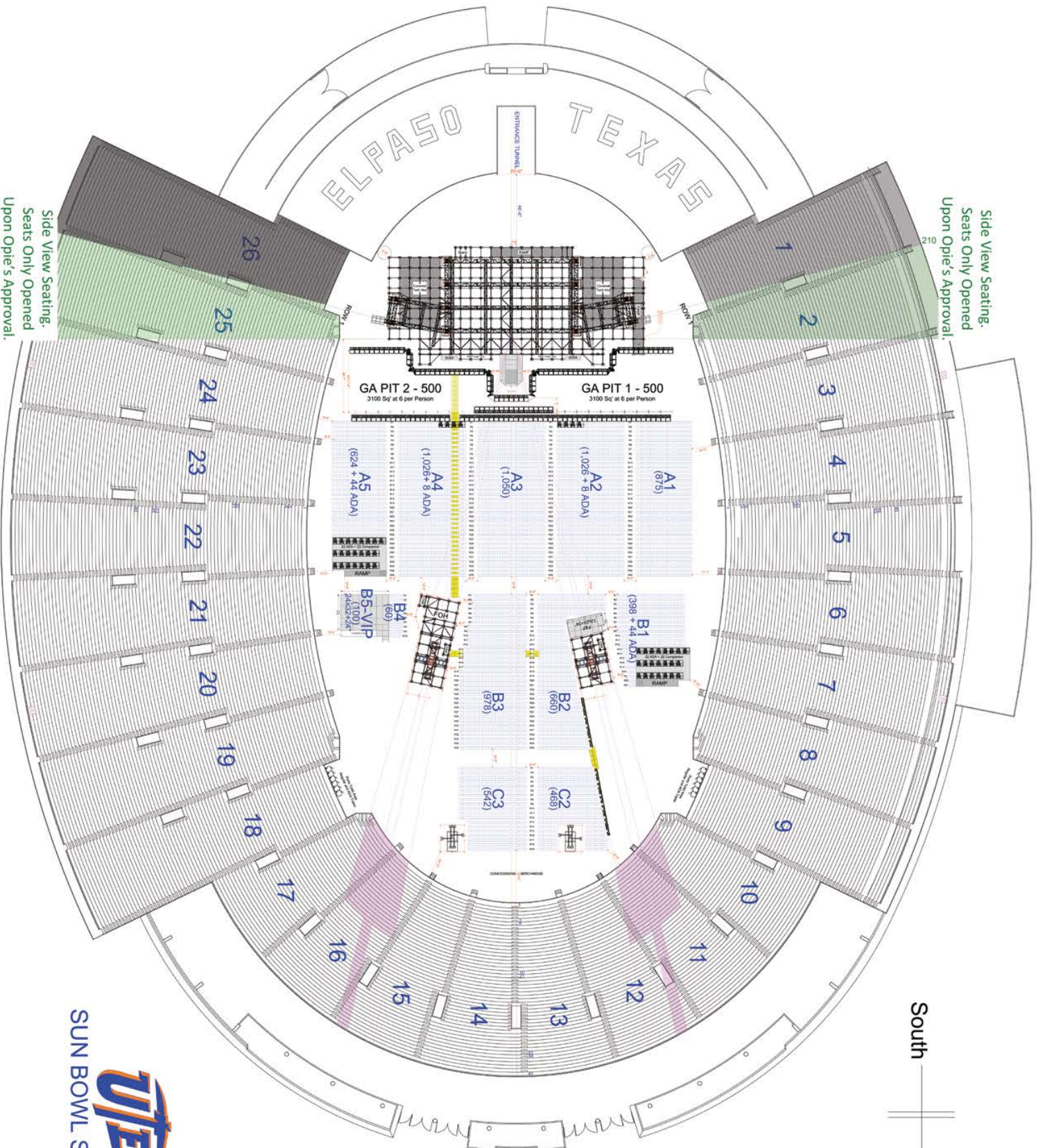


Total Gross Capacity: 46,098

180 line = 46,093

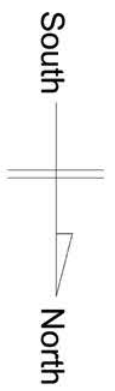
220 line = 50,292

240 line = 54,373



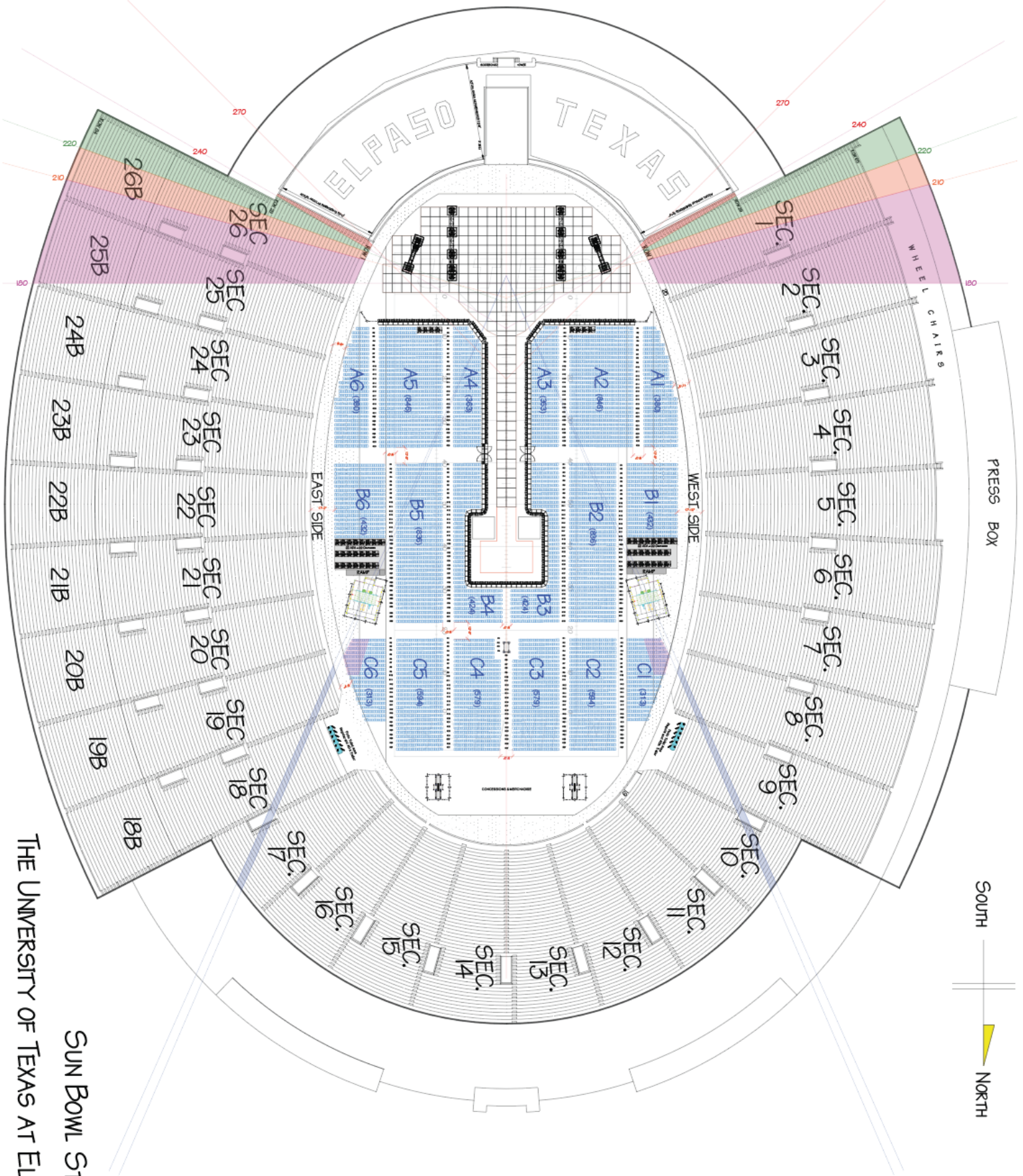
Side View Seating.
Seats Only Opened
Upon Opie's Approval.

Side View Seating.
Seats Only Opened
Upon Opie's Approval.



UTEP
SUN BOWL STADIUM

EL PASO TEXAS



SOUTH
NORTH

SUN BOWL STADIUM
THE UNIVERSITY OF TEXAS AT EL PASO

OPEN INVENTORY



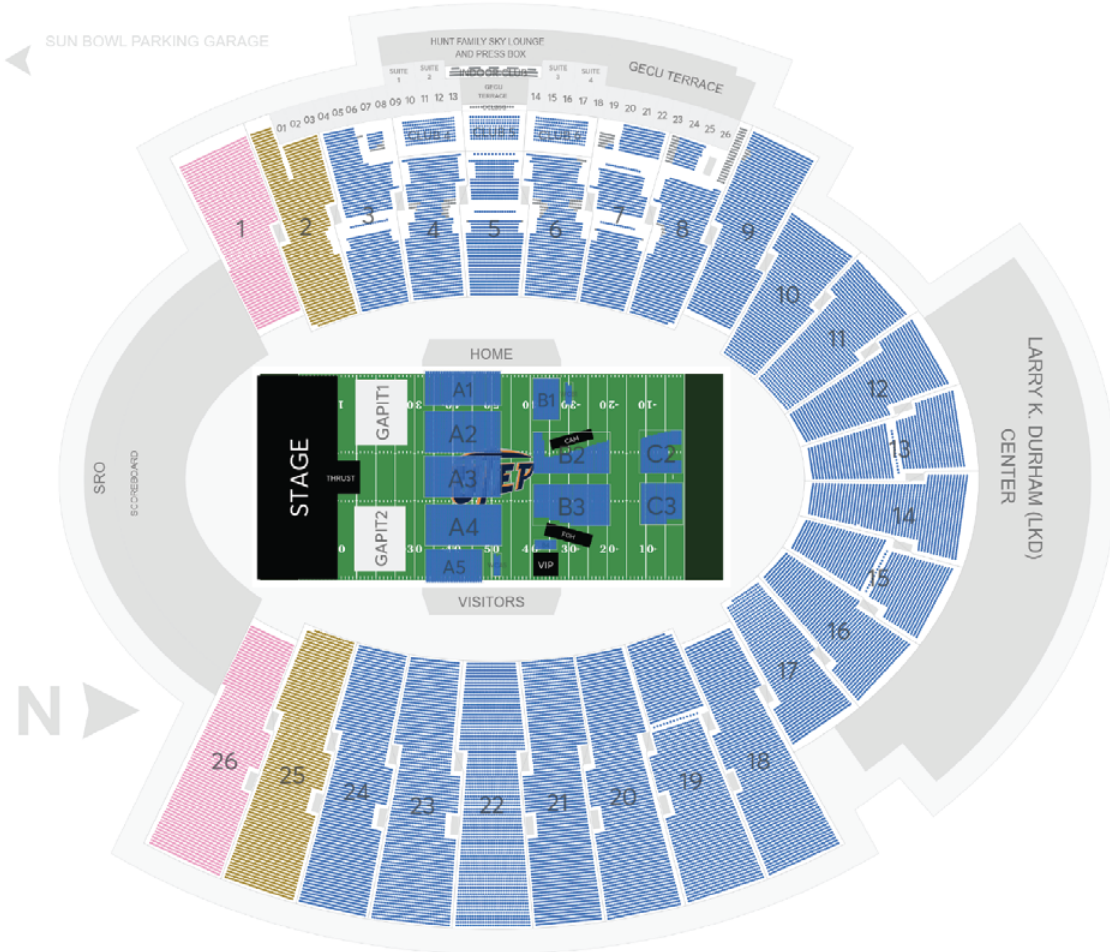
Offers **Capacity**

- Open 46,093
- Standard Admission
- Standard Complimentary

Others **Capacity**

- Kill > Unlabeled 8,937

HOLDS

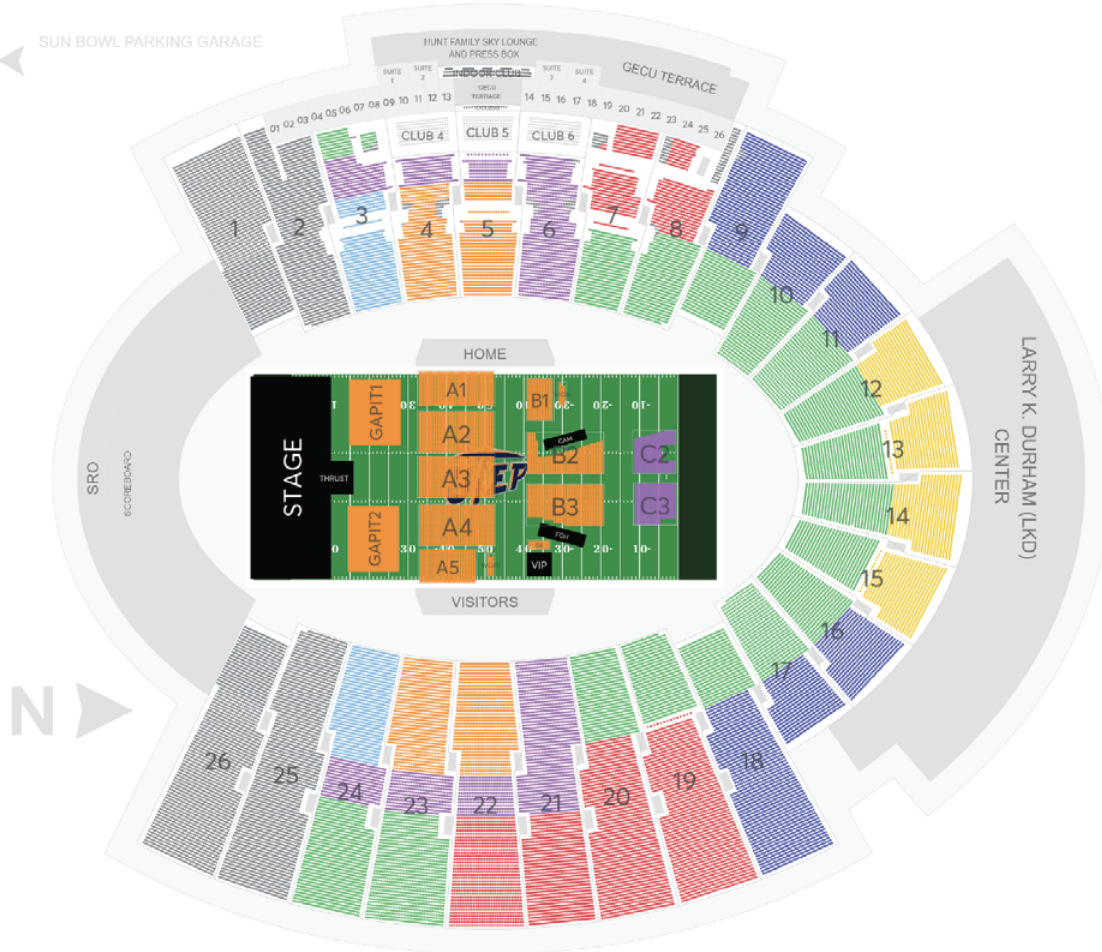


Offers	Capacity
● Open	46,093
Standard Admission	
Standard Complimentary	

Holds	Capacity
● 1-220 › Unlabeled	4,199
● 2-240 › Unlabeled	4,081

Others	Capacity
● Kill › Unlabeled	657

PRICE LEVELS



Price Level	Base Price	Total Capacity	Kills	Sellable Capacity	Total
P1	-	1,727	0	1,727	\$0.00
P2	-	11,519	40	11,479	\$0.00
P3	-	5,341	47	5,294	\$0.00
P4	-	11,673	21	11,652	\$0.00
P5	-	7,072	151	6,921	\$0.00
P6	-	5,689	11	5,678	\$0.00
P7	-	2,775	0	2,775	\$0.00
Total	Avg / seat: \$0.00	54,463	8,937	45,526	\$0.00
Unassigned Seats	-	9,234	-	-	-