

Embotech Corporate Factsheet

FY
2025

embotech*

Embotech

FY 2025 Company Fact Sheet

5 sites

safety certified

120+

employees across Europe

2'500

vehicles daily driven autonomously

2013

founded as ETH Zurich spin-off



Our Investors

BMW i Ventures



Nabtesco

emerald



Key Facts & Figures

Embotech 2026

Automated Vehicle Marshalling (AVM)

- **CE-marked, TÜV-certified** Level-4 autonomy for automotive plants & logistics centers
- Infrastructure-based autonomy, no hardware changes to the vehicles required
- **Use Cases:** Moves vehicles autonomously from end-of-line to testing and dispatch, indoors & outdoors, including parking and reversing
- **Key Features:** Speed up to 30 km/h, mixed-traffic capability, centimeter-level precision
- **Track Record:** 24/7 operations at four BMW factories, with >500k vehicles driven autonomously to date; 2500 vehicles every day



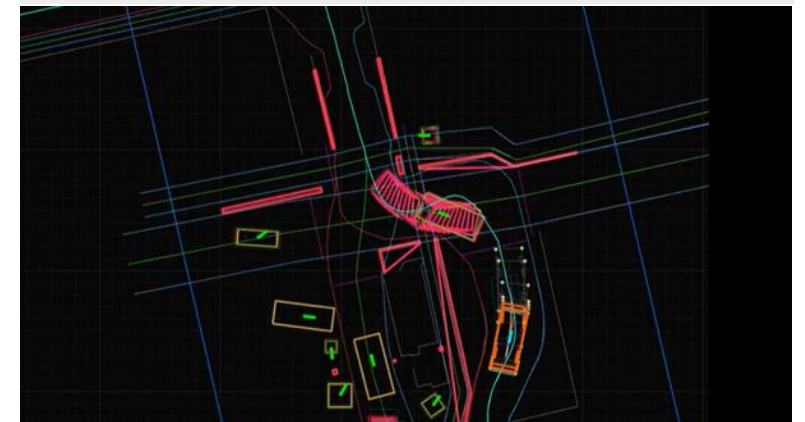
Autonomous Tractor Solution (ATS)

- Fully self-contained, **CE-marked, TÜV-certified** Level-4 for ports & logistics yards
- **Use Cases:** Landside/waterside transport, truck/trailer repositioning, material and intralogistics transport
- **Key Features:** Speed up to 30 km/h, mixed traffic, accurate reversing with trailer, precise positioning, all-weather, day/ night operations
- **Track Record:** Industry-leading rollout project of 30 Autonomous Terminal Tractors (ATTs) with APMT, Maasvlakte II



Technology

- **Dual-path Autonomy Software Stack:**
- **AI-based Performance Path:** Plans optimal driving trajectories in real time and supports human-like responsiveness
- **Algorithmic Safety Path:** Validates every maneuver, monitors system health, and initiates controlled fallback actions where required. Based on deterministic, conservative decision-making. Safety-certified by TÜV SÜD
- **Vehicle-agnostic, scalable architecture** using standard hardware



Rolled-out in Factories and Ports Globally

Oxford, UK 1



Productive deployment since 2025

Rotterdam, NL 2



Rollout of 30 ATTS at Maasvlakte 2

Wilhelmshaven, DE 3



6-month waterside pilot

Leipzig, DE 4



Productive deployment since 2024

Wolfsburg, DE 9



Pilot in manufacturing yard

Hamburg, DE 5



6-month pilot

Regensburg, DE 8




Productive deployment since 2024

Dingolfing, DE 7



Productive deployment since 2024

Middle East 6



Undisclosed: 12-month waterside pilot

● AVM deployments

● ATS deployments

Our Key Partners & Customers

Trusted By



**BMW
GROUP**



APM TERMINALS
Lifting Global Trade



EUROGATE



VOLKSWAGEN
GROUP SERVICES



C A R I A D
A VOLKSWAGEN GROUP COMPANY



TERBERG
SPECIAL VEHICLES



HESAI



R AJANT



dSPACE



**NEXT
G**



MathWorks®



**MAFI
TREPPEL**

Embotech Management Team



Andreas Kyrtatos
CEO



Alexander Domahidi
CTO & Co-Founder



Giorgio Corbellini
COO



Eva Beck
CCO



Lidia Novak
CFO





embotech.com