



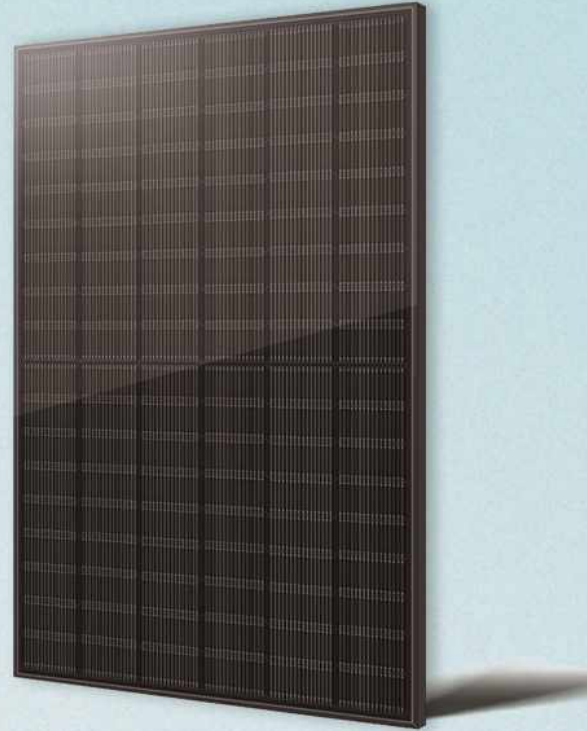
JC(430-450)-108M

All Black Mono-Facial Module

N-type

15 15-year Warranty for Materials and Processing

30 30-year Warranty for Extra Linear Power Output



SMBB Technology

Better light trapping and current collection to improve module power output and reliability.

Mechanical Load Enhanced

Certified to withstand:
5400 Pa front side max static test load
2400 Pa rear side max static test load

Dual-Sided Power Generation

Selected materials have passed rigorous PID tests. It is suitable for coastal desert lake and other terrains

N-Type Technology

N-Type modules with Tunnel Oxide Passivating contacts (TOPcon) technology Offer lower LID/LeTID degradation and better low light performance.

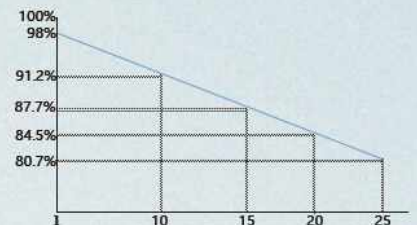
Anti-PID Guarantee

Minimizes the chance of degradation Caused by PID phenomena through Optimization of cell production technology and material control.

Comprehensive product certification

IEC61215:2021
IEC61730:2016
ISO9001:2015
ISO145001:2018
OHSAS18001:2007

Module power guarantee



PRODUCT CERTIFICATES*



JC(430-450)-108M

23.04%

MAX MODULE EFFICIENCY

0~3%

POWER TOLERANCE

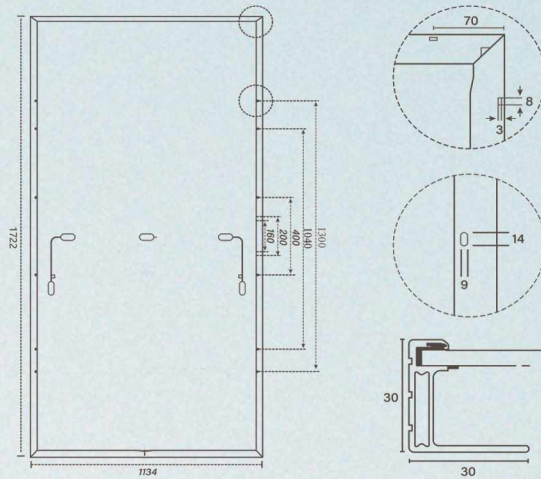
<1%

FIRST YEAR
POWER DEGRADATION

0.40%

YEAR 2-30
POWER DEGRADATION

Engineering drawings(mm)



Mechanical Parameters

Cell Type	N -type Mono-crystalline
No. Of Cells	108 (6*20)
Junction Box	IP68, 3 diodes
Frame	Anodized frame
Weight	20.5kg±3%
Dimension	1722*1134*30mm
Cable	4mm2,350mm in length, can be customized
Glass	Double glass 2.0+2.0mm semi-tempered glass

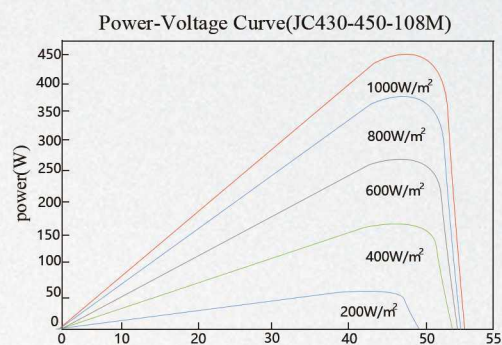
Operating Parameters:

Max. System Voltage	1500V/ DC
Operation Temperature	-40~+70°C
Max. Snow Load(Front)	5400Pa
Max. Wind Load(Front)	2600Pa
NOCT	45±2°C

Electrical Characteristics STC:AM1.5 1000W/m² 25°C NOCT:AM1.5 800W/m² 20°C 1m/s

Module Type	JC(430-450)-108M											
	STC	NOCT	STC	NOCT	STC	NOCT	STC	NOCT	STC	NOCT	STC	NOCT
Maximum Power-Pmax [Wp]	430	326	435	330	440	334	445	338	450	342		
Maximum Power Voltage -Vmp[V]	32.25	30.32	32.45	30.43	32.65	30.54	32.85	30.65	33.05	30.76		
Maximum Power Current -Imp[A]	13.34	10.75	13.41	10.85	13.48	10.94	13.55	11.03	13.62	11.12		
Open-circuit Voltage -Voc[V]	37.68	36.32	37.77	36.56	37.97	36.80	38.17	37.04	38.37	37.28		
Short-circuit Current -Isc[A]	14.27	11.40	14.35	11.46	14.41	11.52	14.47	11.58	14.53	11.64		
Power Tolerance	0~+3%											
Module Efficiency STC (%)	22.02		22.28		22.53		22.79		23.04			

Electrical Performance



Application Conditions

Operating Temperature	-40 °C ~ +70°C
Maximum System Voltage	1000/1500 VDC (IEC)
Maximum Series Fuse Rating	25A

Packaging configuration

Pallet Dimentions	1760*1150*1260mm
Packing Detail	36 pcs/pallets 936 pcs/ 40'HQ Container
	36 pcs/pallets 366 pcs/ 20'HQ Container

*For detailed information, please refer to the Installation Manual.