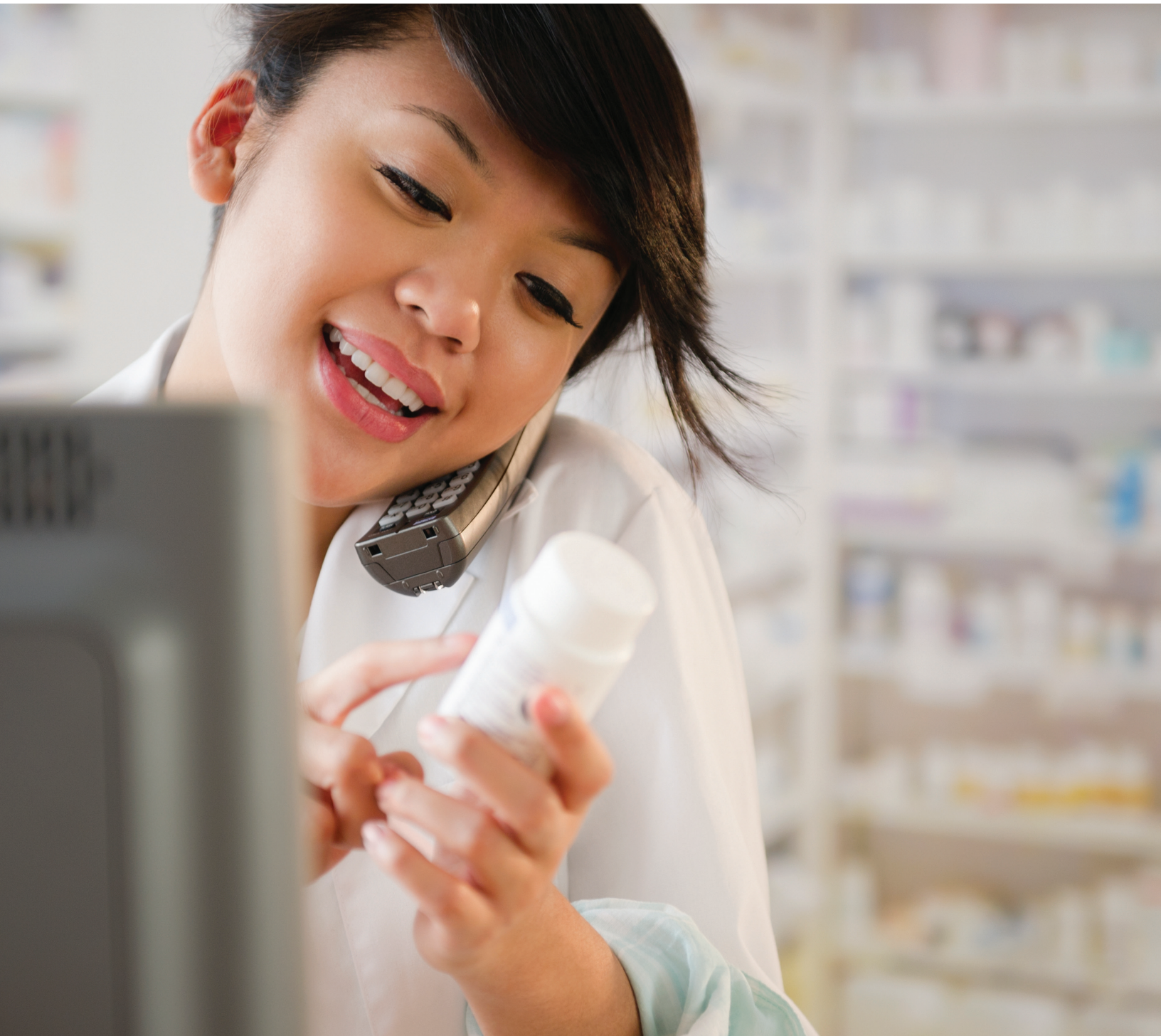




**BlueCross BlueShield**  
of Texas



# Preventive Drug Benefit Program

## Employee Guide

Effective January 1, 2026

Blue Cross and Blue Shield of Texas, a Division of Health Care Service Corporation,  
a Mutual Legal Reserve Company, an Independent Licensee of the Blue Cross and Blue Shield Association

# Preventive Drug Benefit Program for BMC Software

## Introduction

Blue Cross and Blue Shield of Texas administers the preventive drug benefit for your group's high deductible health plan, which has been designed for use with Health Savings Accounts. The preventive drug benefit program includes categories of prescription drugs that are often used for preventive purposes. If your doctor has prescribed any of them to you or to your HDHP-covered dependents for preventive purposes, your HDHP may pay for the drugs before you meet your HDHP deductible.

This guide is being provided as a resource to help you manage your prescription drug benefits under your employer's HDHP. It includes some commonly, but not all, drugs that are prescribed for preventive purposes.

The drugs listed in this guide will be reviewed from time to time and are subject to change. Coverage of all medications is still subject to your HDHP limits, exclusions and out-of-pocket requirements (for example, your prescription drug payment levels). Coverage of some medications or drug products may be under your medical benefit. Please verify with your benefit plan if there are any additional requirements before a drug may be covered.

**IMPORTANT REMINDER: These drugs could also at times be prescribed for treatment purposes. As a result, the listing of a drug in the Guide does not mean that it will be covered by your benefit plan before your HDHP deductible is satisfied. If your doctor has prescribed a listed drug for treatment purposes (and not preventive purposes) then your plan does not provide coverage for that drug before your HDHP deductible is satisfied.**

As each individual's medical circumstances are different, and because proper classification is necessary for you to ensure you are complying with applicable HDHP tax requirements, it is important for you to confirm the purpose of the prescription with your doctor. Please call the number on your member ID card when your doctor confirms for you that they prescribed one of the listed drugs for treatment purposes so your claims can be processed correctly. **Unless you provide us with this information, claims for the drugs listed in the Guide will be processed as "preventive," and you or your doctor may be asked by us to provide medical records showing that the drug you're taking is being used for prevention. Remember, if you improperly classify the drug, it may result in adverse tax consequences so please be sure to take the confirming step to properly classify your claim.**

**Please follow these steps to make sure you are properly classifying the purpose of your prescription:**

1. Find your drug in the Guide.
2. Talk to your doctor about whether your drug is in fact being prescribed for preventive purposes (and not treatment purposes).
3. If prescribed for treatment purposes, call the number on your ID card to let us know.
4. If prescribed for preventive purposes, there is no need to call.

# 2026 HDHP-HSA Preventive Drug List for BMC Software

The preventive drug program currently includes prescription drugs in the following categories:

- Anti-coagulants / anti-platelets
- Anti-malarials
- Bowel prep medications
- Contraceptives
- Depression
- Diabetes medications
- Diabetic supplies
- Fluoride supplements
- High blood pressure
- High cholesterol injectable PCSK-9s
- High cholesterol orals
- HIV/AIDS
- Migraine Prophylaxis CGRPs Injectable
- Migraine Prophylaxis CGRPs Oral
- Osteoporosis
- Respiratory
- Tobacco cessation
- Vaccines
- Vitamins
- Weight Loss Agents
- Weight Management Agents

The drugs in each category are listed alphabetically on the following pages.

- Generic drugs are listed in **bold**.
- Brand drugs are listed in all CAPITAL letters.
- Some strengths and/or formulations may not be covered.
- Brand names in parenthesis are listed for reference and are not covered under the benefit.



This drug/drug category may also be included under the Affordable Care Act coverage of preventive services. These products have limited or \$0 member cost-sharing (copay or co-insurance), when meeting the conditions as outlined under the regulation and when you use a pharmacy or doctor in your health plan's network. Not all products covered under the ACA are shown. Coverage can vary based on your benefit plan and/or prescription drug list. Call the number on your member ID card if you have any questions and to find out what you may pay.

**REMEMBER: Just because a drug is on the preventive drug benefit list, doesn't always mean it is covered. It also doesn't mean that it may be covered by your benefit plan before your HDHP deductible is satisfied. Coverage of all medications is still subject to your plan benefits. Please see your benefit plan materials for coverage details, or call the number on your member ID card.**

**Health Savings Accounts have tax and legal ramifications. Blue Cross and Blue Shield of Texas does not provide legal or tax advice, and nothing herein should be construed as legal or tax advice. These materials, and any tax-related statements in them, are not intended or written to be used, and cannot be used or relied on, for the purpose of avoiding tax penalties. Tax-related statements, if any, may have been written in connection with the promotion or marketing of the transaction(s) or matter(s) addressed by these materials. You should seek advice based on your particular circumstances from an independent tax advisor regarding the tax consequences of specific health insurance plans or products.**

# 2026 HDHP-HSA Preventive Drug List for BMC Software

## Anti-Coagulants / Anti-Platelets

anagrelide hcl cap 0.5 mg (Agrylin)  
anagrelide hcl cap 1 mg  
aspirin-dipyridamole cap er 12hr  
25-200 mg  
cilostazol tab 50 mg, 100 mg  
clopidogrel bisulfate tab  
75 mg (base equivalent) (Plavix)  
dabigatran etexilate mesylate cap  
75 mg, 110 mg, 150 mg  
(etexilate base eq) (Pradaxa)  
dipyridamole tab 25 mg, 50 mg,  
75 mg  
ELIQUIS – apixaban tab 2.5 mg,  
5 mg  
ELIQUIS STARTER PACK – apixaban  
tab starter pack 5 mg  
prasugrel hcl tab 5 mg, 10 mg  
(base equiv) (Effient)  
rivaroxaban tab 2.5 mg (Xarelto)  
ticagrelor tab 60 mg, 90 mg  
(Brilinta)  
warfarin sodium tab 1 mg, 2 mg,  
2.5 mg, 3 mg, 4 mg, 5 mg,  
6 mg, 7.5 mg, 10 mg  
XARELTO – rivaroxaban for susp  
1 mg/mL  
XARELTO – rivaroxaban tab  
2.5 mg, 10 mg, 15 mg, 20 mg  
XARELTO STARTER PACK –  
rivaroxaban tab starter therapy  
pack 15 mg & 20 mg

## Anti-Malarials

atovaquone-proguanil hcl tab  
62.5-25 mg, 250-100 mg  
(Malarone)  
chloroquine phosphate tab  
250 mg, 500 mg  
hydroxychloroquine sulfate tab  
100 mg, 300 mg, 400 mg  
hydroxychloroquine sulfate tab  
200 mg (Plaquenil)  
mefloquine hcl tab 250 mg  
primaquine phosphate tab  
26.3 mg (15 mg base) (Primaquine)

## Bowel Prep Medications

peg 3350-kcl-na bicarb-nacl-na  
sulfate for soln 236 gm  
(Golytely)  
peg 3350-kcl-nacl-na sulfate-na  
ascorbate-c for soln 100 gm  
(Moviprep)  
peg 3350-kcl-sod bicarb-nacl for  
soln 420 gm

## Contraceptives

### Cervical Caps

FEMCAP – cervical cap 22 mm,  
26 mm, 30 mm

### Diaphragms

CAYA – diaphragm arc-spring  
OMNIFLEX DIAPHRAGM –  
diaphragms  
WIDE-SEAL SILICONE DIAPHRAGM  
KIT – diaphragm wide seal 60 mm,  
65 mm, 70 mm, 75 mm, 80 mm,  
85 mm, 90 mm, 95 mm

### Female Condom

FC2 FEMALE CONDOM  
condoms – female

### Male Condom

ALL MALE CONDOMS

### Spermicide

ENCARE – nonoxynol-9 vaginal  
suppos 100 mg  
OPTIONS GYNOL II VAGINAL –  
nonoxynol-9 gel 3%  
VCF VAGINAL CONTRACEPTIVE  
FILM – nonoxynol-9 film 28%  
VCF VAGINAL CONTRACEPTIVE  
FOAM – nonoxynol-9 foam 12.5%

### Sponge

TODAY SPONGE – nonoxynol-9  
vaginal sponge 1000 mg

### Emergency Progestin

Aftera – levonorgestrel tab 1.5 mg  
(Plan B One-Step)  
Afterpill – levonorgestrel tab  
1.5 mg (Plan B One-Step)

Econtra One Step – levonorgestrel  
tab 1.5 mg (Plan B One-Step)  
Her Style – levonorgestrel tab  
1.5 mg (Plan B One-Step)  
levonorgestrel tab 1.5 mg  
(Plan B One-Step)  
My Choice – levonorgestrel tab  
1.5 mg (Plan B One-Step)  
My Way – levonorgestrel tab  
1.5 mg (Plan B One-Step)  
New Day – levonorgestrel tab  
1.5 mg (Plan B One-Step)  
Opcicon One-Step – levonorgestrel  
tab 1.5 mg (Plan B One-Step)  
Option 2 – levonorgestrel tab  
1.5 mg (Plan B One-Step)  
React – levonorgestrel tab 1.5 mg  
(Plan B One-Step)  
Take Action – levonorgestrel tab  
1.5 mg (Plan B One-Step)

### Emergency Ella

ELLA – ulipristal acetate tab 30 mg

### Injectable Progestin

medroxyprogesterone acetate im  
susp prefilled syr 150 mg/mL  
(Depo-Provera Contraceptiv)  
medroxyprogesterone acetate im  
susp 150 mg/mL (Depo-Provera  
Contraceptiv)

### Oral Combined

Afirmelle – levonorgestrel &  
ethinyl estradiol tab  
0.1 mg-20 mcg  
Altavera – levonorgestrel & ethinyl  
estradiol tab 0.15 mg-30 mcg  
Alyacen 1/35 – norethindrone &  
ethinyl estradiol tab  
1 mg-35 mcg  
Alyacen 7/7/7 – norethindrone-eth  
estradiol tab  
0.5-35/0.75-35/1-35 mg-mcg  
Apri – desogestrel & ethinyl  
estradiol tab 0.15 mg-30 mcg  
Aranelle – norethindrone-eth  
estradiol tab  
0.5-35/1-35/0.5-35 mg-mcg

# 2026 HDHP-HSA Preventive Drug List for BMC Software

Aubra eq – levonorgestrel & ethinyl estradiol tab 0.1 mg-20 mcg	Cryselle-28 – norgestrel & ethinyl estradiol tab 0.3 mg-30 mcg	Hailey 24 fe – norethindrone ace-ethinyl estradiol-fe tab 1 mg-20 mcg (24)
Aurovela 1/20 – norethindrone ace & ethinyl estradiol tab 1 mg-20 mcg	Cyred eq – desogestrel & ethinyl estradiol tab 0.15 mg-30 mcg	Hailey fe 1/20 – norethindrone ace & ethinyl estradiol-fe tab 1 mg-20 mcg
Aurovela 1.5/30 – norethindrone ace & ethinyl estradiol tab 1.5 mg-30 mcg	Dasetta 1/35 – norethindrone & ethinyl estradiol tab 1 mg-35 mcg	Hailey fe 1.5/30 – norethindrone ace & ethinyl estradiol-fe tab 1.5 mg-30 mcg
Aurovela 24 fe – norethindrone ace-ethinyl estradiol-fe tab 1 mg-20 mcg (24)	Dasetta 7/7/7 – norethindrone-eth estradiol tab 0.5-35/0.75-35/1-35 mg-mcg	Isibloom – desogestrel & ethinyl estradiol tab 0.15 mg-30 mcg
Aurovela fe 1/20 – norethindrone ace & ethinyl estradiol-fe tab 1 mg-20 mcg	Delyla – levonorgestrel & ethinyl estradiol tab 0.1 mg-20 mcg	Jasmiel – drospirenone-ethinyl estradiol tab 3-0.02 mg (Yaz)
Aurovela fe 1.5/30 – norethindrone ace & ethinyl estradiol-fe tab 1.5 mg-30 mcg	desogest-eth estrad & eth estrad tab 0.15-0.02/0.01 mg (21/5)	Juleber – desogestrel & ethinyl estradiol tab 0.15 mg-30 mcg
Averi – desogestrel-ethinyl estradiol-fe tab 0.15-0.03 mg	drospirenone-ethinyl estrad-levomefolate tab 3-0.02-0.451 mg (Beyaz)	Junel 1/20 – norethindrone ace & ethinyl estradiol tab 1 mg-20 mcg
Aviane – levonorgestrel & ethinyl estradiol tab 0.1 mg-20 mcg	drospirenone-ethinyl estradiol tab 3-0.02 mg (Yaz)	Junel 1.5/30 – norethindrone ace & ethinyl estradiol tab 1.5 mg-30 mcg
Ayuna – levonorgestrel & ethinyl estradiol tab 0.15 mg-30 mcg	drospirenone-ethinyl estradiol tab 3-0.03 mg (Yasmin 28)	Junel fe 1/20 – norethindrone ace & ethinyl estradiol-fe tab 1 mg-20 mcg
Azurette – desogest-eth estrad & eth estrad tab 0.15-0.02/0.01 mg (21/5)	Elinest – norgestrel & ethinyl estradiol tab 0.3 mg-30 mcg	Junel fe 1.5/30 – norethindrone ace & ethinyl estradiol-fe tab 1.5 mg-30 mcg
Balziva – norethindrone & ethinyl estradiol tab 0.4 mg-35 mcg	Enpresse-28 – levonorgestrel-eth estra tab 0.05-30/0.075-40/0.125-30 mg-mcg	Junel fe 24 – norethindrone ace-ethinyl estradiol-fe tab 1 mg-20 mcg (24)
Blisovi fe 1/20 – norethindrone ace & ethinyl estradiol-fe tab 1 mg-20 mcg	Enskyce – desogestrel & ethinyl estradiol tab 0.15 mg-30 mcg	Kaitlib fe – norethindrone & ethinyl estradiol-fe chew tab 0.8 mg-25 mcg
Blisovi fe 1.5/30 – norethindrone ace & ethinyl estradiol-fe tab 1.5 mg-30 mcg	Estarylla – norgestimate & ethinyl estradiol tab 0.25 mg-35 mcg	Kalliga – desogestrel & ethinyl estradiol tab 0.15 mg-30 mcg
Blisovi 24 fe – norethindrone ace-ethinyl estradiol-fe tab 1 mg-20 mcg (24)	ethynodiol diacetate & ethinyl estradiol tab 1 mg-35 mcg, 1 mg-50 mcg	Kariva – desogest-eth estrad & eth estrad tab 0.15-0.02/0.01 mg (21/5)
Briellyn – norethindrone & ethinyl estradiol tab 0.4 mg-35 mcg	Falmina – levonorgestrel & ethinyl estradiol tab 0.1 mg-20 mcg	Kelnor 1/35 – ethynodiol diacetate & ethinyl estradiol tab 1 mg-35 mcg
Charlotte 24 fe – norethindrone ace/eth estradiol-fe chew tab 1 mg-20 mcg (24)	Feirza 1/20 – norethindrone ace & ethinyl estradiol-fe tab 1 mg-20 mcg	Kelnor 1/50 – ethynodiol diacetate & ethinyl estradiol tab 1 mg-50 mcg
Chateal eq – levonorgestrel & ethinyl estradiol tab 0.15 mg-30 mcg	Feirza 1.5/30 – norethindrone ace & ethinyl estradiol-fe tab 1.5 mg-30 mcg	Kurvelo – levonorgestrel & ethinyl estradiol tab 0.15 mg-30 mcg
	Finzala – norethindrone ace-eth estradiol-fe chew tab 1 mg-20 mcg (24)	
	Hailey 1.5/30 – norethindrone ace & ethinyl estradiol tab 1.5 mg-30 mcg	

# 2026 HDHP-HSA Preventive Drug List for BMC Software

Larin 1/20 – norethindrone ace & ethinyl estradiol tab 1 mg-20 mcg	Lo-Zumandimine – drospirenone-ethinyl estradiol tab 3-0.02 mg (Yaz)	norgestimate-eth estrad tab 0.18-25/0.215-25/0.25-25 mg-mcg, 0.18-35/0.215-35/0.25-35 mg-mcg
Larin 1.5/30 – norethindrone ace & ethinyl estradiol tab 1.5 mg-30 mcg	Loryna – drospirenone-ethinyl estradiol tab 3-0.02 mg (Yaz)	Nortrel 0.5/35 (28) – norethindrone & ethinyl estradiol tab 0.5 mg-35 mcg
Larin fe 1/20 – norethindrone ace & ethinyl estradiol-fe tab 1 mg-20 mcg	Low-Ogestrel – norgestrel & ethinyl estradiol tab 0.3 mg-30 mcg	Nortrel 1/35 – norethindrone & ethinyl estradiol tab 1 mg-35 mcg
Larin fe 1.5/30 – norethindrone ace & ethinyl estradiol-fe tab 1.5 mg-30 mcg	Lutera – levonorgestrel & ethinyl estradiol tab 0.1 mg-20 mcg	Nortrel 7/7/7 – norethindrone-eth estradiol tab 0.5-35/0.75-35/1-35 mg-mcg
Larin 24 fe – norethindrone ace-ethinyl estradiol-fe tab 1 mg-20 mcg (24)	Marlissa – levonorgestrel & ethinyl estradiol tab 0.15 mg-30 mcg	Nylia 1/35 – norethindrone & ethinyl estradiol tab 1 mg-35 mcg
Layolis fe – norethindrone & ethinyl estradiol-fe chew tab 0.8 mg-25 mcg	Mibelas 24 Fe – norethindrone ace-eth estradiol-fe chew tab 1 mg-20 mcg (24)	Nylia 7/7/7 – norethindrone-eth estradiol tab 0.5-35/0.75-35/1-35 mg-mcg
Leena – norethindrone-eth estradiol tab 0.5-35/1-35/0.5-35 mg-mcg	Microgestin 1/20 – norethindrone ace & ethinyl estradiol tab 1 mg-20 mcg	Ocella – drospirenone-ethinyl estradiol tab 3-0.03 mg (Yasmin 28)
Lessina – levonorgestrel & ethinyl estradiol tab 0.1 mg-20 mcg	Microgestin 1.5/30 – norethindrone ace & ethinyl estradiol tab 1.5 mg-30 mcg	Philith – norethindrone & ethinyl estradiol tab 0.4 mg-35 mcg
Levonest – levonorgestrel-eth estro tab 0.05-30/0.075-40/0.125-30 mg-mcg	Microgestin fe 1/20 – norethindrone ace & ethinyl estradiol-fe tab 1 mg-20 mcg	Pimtreea – desogest-eth estrad & eth estrad tab 0.15-0.02/0.01 mg (21/5)
levonorgestrel & ethinyl estradiol tab 0.1 mg-20 mcg, 0.15 mg-30 mcg	Microgestin fe 1.5/30 – norethindrone ace & ethinyl estradiol-fe tab 1.5 mg-30 mcg	Portia-28 – levonorgestrel & ethinyl estradiol tab 0.15 mg-30 mcg
levonorgestrel-eth estro tab 0.05-30/0.075-40/0.125-30 mg-mcg	Mili – norgestimate & ethinyl estradiol tab 0.25 mg-35 mcg	Reclipsen – desogestrel & ethinyl estradiol tab 0.15 mg-30 mcg
Levora 0.15/30-28 – levonorgestrel & ethinyl estradiol tab 0.15 mg-30 mcg	Mono-Linyah – norgestimate & ethinyl estradiol tab 0.25 mg-35 mcg	Simliya – desogest-eth estrad & eth estrad tab 0.15-0.02/0.01 mg (21/5)
Loestrin 1/20-21 – norethindrone ace & ethinyl estradiol tab 1 mg-20 mcg	Necon 0.5/35-28 – norethindrone & ethinyl estradiol tab 0.5 mg-35 mcg	Sprintec 28 – norgestimate & ethinyl estradiol tab 0.25 mg-35 mcg
Loestrin 1.5/30-21 – norethindrone ace & ethinyl estradiol tab 1.5 mg-30 mcg	Nikki – drospirenone-ethinyl estradiol tab 3-0.02 mg (Yaz)	Sronyx – levonorgestrel & ethinyl estradiol tab 0.1 mg-20 mcg
Loestrin fe 1/20 – norethindrone ace & ethinyl estradiol-fe tab 1 mg-20 mcg	norethindrone ace & ethinyl estradiol tab 1 mg-20 mcg, 1.5 mg-30 mcg	Syeda – drospirenone-ethinyl estradiol tab 3-0.03 mg (Yasmin 28)
Loestrin fe 1.5/30 – norethindrone ace & ethinyl estradiol-fe tab 1.5 mg-30 mcg	norethindrone ace & ethinyl estradiol-fe tab 1 mg-20 mcg, 1.5 mg-30 mcg	Tarina 24 fe – norethindrone ace-ethinyl estradiol-fe tab 1 mg-20 mcg (24)
	norethindrone ace-eth estradiol-fe chew tab 1 mg-20 mcg (24)	
	norgestimate & ethinyl estradiol tab 0.25 mg-35 mcg	

# 2026 HDHP-HSA Preventive Drug List for BMC Software

Tarina fe 1/20 eq – norethindrone ace & ethinyl estradiol-fe tab 1 mg-20 mcg	Vestura – drospirenone-ethinyl estradiol tab 3-0.02 mg (Yaz)	Dolishale – levonorgestrel-ethinyl estradiol (continuous) tab 90-20 mcg
Tilia fe – norethindrone ac-ethinyl estradiol-fe tab 1-20/1-30/1-35 mg-mcg	Vienna – levonorgestrel & ethinyl estradiol tab 0.1 mg-20 mcg	Iclevia – levonorgestrel & ethinyl estradiol (91-day) tab 0.15-0.03 mg
Tri-Estarylla – norgestimate-eth estradiol tab 0.18-35/0.215- 35/0.25-35 mg-mcg	Viorele – desogest-eth estradiol & eth estradiol tab 0.15-0.02/0.01 mg (21/5)	Introvale – levonorgestrel & ethinyl estradiol (91-day) tab 0.15-0.03mg
Tri-Legest fe – norethindrone ac-ethinyl estradiol-fe tab 1-20/1-30/1-35 mg-mcg	Volnea – desogest-eth estradiol & eth estradiol tab 0.15-0.02/0.01 mg (21/5)	Jaimiess – levonorgestrel-eth est tab 0.15-0.03 mg (84) & eth est tab 0.01 mg (7)
Tri-Linyah – norgestimate-eth estradiol tab 0.18-35/0.215- 35/0.25-35 mg-mcg	Vyfemla – norethindrone & ethinyl estradiol tab 0.4 mg-35 mcg	Jolessa – levonorgestrel & ethinyl estradiol (91-day) tab 0.15-0.03 mg
Tri-Lo-Estarylla – norgestimate-eth estradiol tab 0.18-25/0.215- 25/0.25-25 mg-mcg	Vylibra – norgestimate & ethinyl estradiol tab 0.25 mg-35 mcg	levonor-eth est tab 0.15- 0.02/0.025/0.03 mg & eth est 0.01 mg
Tri-Lo-Marzia – norgestimate-eth estradiol tab 0.18-25/0.215- 25/0.25-25 mg-mcg	Wera – norethindrone & ethinyl estradiol tab 0.5 mg-35 mcg	levonorg-eth est tab 0.1-0.02 mg (84) & eth est tab 0.01 mg (7)
Tri-Lo-Mili – norgestimate-eth estradiol tab 0.18-25/0.215- 25/0.25-25 mg-mcg	Wymzya fe – norethindrone & ethinyl estradiol-fe chew tab 0.4 mg-35 mcg	levonorgestrel & ethinyl estradiol (91-day) tab 0.15-0.03 mg
Tri-Lo-Sprintec – norgestimate-eth estradiol tab 0.18-25/0.215- 25/0.25-25 mg-mcg	Xarah Fe – norethindrone ac-ethinyl estradiol-fe tab 1-20/1-30/1-35 mg-mcg	levonorgestrel-ethinyl estradiol (continuous) tab 90-20 mcg
Tri-Mili – norgestimate-eth estradiol tab 0.18-35/0.215- 35/0.25-35 mg-mcg	Xelria Fe – norethindrone & ethinyl estradiol-fe chew tab 0.4 mg-35 mcg	Lojaimiess – levonorgestrel-eth est tab 0.1-0.02 mg (84) & eth est tab 0.01 mg (7)
Tri-Sprintec – norgestimate-eth estradiol tab 0.18-35/0.215- 35/0.25-35 mg-mcg	Zovia 1/35 – ethynodiol diacetate & ethinyl estradiol tab 1 mg-35 mcg	Rivelsa – levonor-eth est tab 0.15-0.02/0.025/0.03 mg & eth est 0.01 mg
Tri-Vylibra – norgestimate-eth estradiol tab 0.18-35/0.215- 35/0.25-35 mg-mcg	Zumandimine – drospirenone- ethinyl estradiol tab 3-0.03 mg (Yasmin 28)	Setlakin – levonorgestrel & ethinyl estradiol (91-day) tab 0.15-0.03 mg
Tri-Vylibra Lo – norgestimate-eth estradiol tab 0.18-25/0.215- 25/0.25-25 mg-mcg	<a href="#">Oral Extended Continuous</a>	Simpesse – levonorgestrel-eth est tab 0.15-0.03 mg (84) & eth est tab 0.01 mg (7)
Trivora-28 – levonorgestrel-eth estradiol tab 0.05-30/0.075-40/0.125- 30 mg-mcg	Amethyst – levonorgestrel-ethinyl estradiol (continuous) tab 90-20 mcg	<a href="#">Oral Progestin</a>
Turqoz – norgestrel & ethinyl estradiol tab 0.3 mg-30 mcg	Ashlyna – levonorgestrel-eth est tab 0.15-0.03 mg (84) & eth est tab 0.01 mg (7)	Camila – norethindrone tab 0.35 mg
Valtya 1/50 – ethynodiol diacetate & ethinyl estradiol tab 1 mg-50 mcg	Camrese – levonorgestrel-eth est tab 0.15-0.03 mg (84) & eth est tab 0.01 mg (7)	Deblitane – norethindrone tab 0.35 mg
	Camrese Lo – levonorgestrel-eth est tab 0.1-0.02 mg (84) & eth est tab 0.01 mg (7)	Emzahn – norethindrone tab 0.35 mg
	Daysee – levonorgestrel-eth est tab 0.15-0.03 mg (84) & eth est tab 0.01 mg (7)	Errin – norethindrone tab 0.35 mg
		Heather – norethindrone tab 0.35 mg

# 2026 HDHP-HSA Preventive Drug List for BMC Software

**Incassia – norethindrone tab**  
0.35 mg

**Jencycla – norethindrone tab**  
0.35 mg

**Lyleq – norethindrone tab**  
0.35 mg

**Lyza – norethindrone tab**  
0.35 mg

**Nora-Be – norethindrone tab**  
0.35 mg

**norethindrone tab 0.35 mg**

**Norlyroc – norethindrone tab**  
0.35 mg

**OPILL – norgestrel tab 0.075 mg**

**Sharobel – norethindrone tab**  
0.35 mg

## Transdermal Combined

**norelgestromin-ethinyl estradiol  
td ptwk 150-35 mcg/24hr**

**Xulane – norelgestromin-ethinyl  
estradiol td ptwk  
150-35 mcg/24hr**

**Zafemy – norelgestromin-ethinyl  
estradiol td ptwk  
150-35 mcg/24hr**

## Vaginal Combined

**NUVARING – etonogestrel-ethinyl  
estradiol va ring  
0.120-0.015 mg/24hr**

## Depression

### Selective Serotonin Reuptake Inhibitors (SSRIs)

**citalopram hydrobromide oral  
soln 10 mg/5 mL**

**citalopram hydrobromide tab  
10 mg, 20 mg, 40 mg  
(base equivalent) (Celexa)**

**escitalopram oxalate soln  
5 mg/5 mL (base equivalent)**

**escitalopram oxalate tab 5 mg,  
10 mg, 20 mg (base equivalent)  
(Lexapro)**

**fluoxetine hcl cap 10 mg, 20 mg,  
40 mg (Prozac)**

**fluoxetine hcl solution  
20 mg/5 mL**

**fluoxetine hcl tab 10 mg, 20 mg  
paroxetine hcl tab 10 mg, 20 mg,  
30 mg, 40 mg (Paxil)**

**sertraline hcl oral concentrate for  
solution 20 mg/mL (Zoloft)**

**sertraline hcl tab 25 mg, 50 mg,  
100 mg (Zoloft)**

## Diabetes Medications

### Hypoglycemic Agents

**BAQSIMI ONE PACK – glucagon nasal  
powder 3 mg/dose**

**BAQSIMI TWO PACK – glucagon nasal  
powder 3 mg/dose**

**glucagon (rdna) for inj kit 1 mg  
GLUCAGON EMERGENCY KIT FO –  
glucagon hcl for inj 1 mg**

**GVOKE HYPOPEN 1-PACK – glucagon  
subcutaneous solution auto-  
injector 0.5 mg/0.1 mL,  
1 mg/0.2 mL**

**GVOKE HYPOPEN 2-PACK – glucagon  
subcutaneous solution auto-  
injector 0.5 mg/0.1 mL,  
1 mg/0.2 mL**

**GVOKE KIT – glucagon subcutaneous  
soln 1 mg/0.2 mL**

**GVOKE PFS – glucagon subcutaneous  
soln pref syringe 1 mg/0.2 mL**

**ZEGALOGUE – dasiglucagon hcl  
subcutaneous soln auto-inj  
0.6 mg/0.6 mL**

**ZEGALOGUE – dasiglucagon hcl  
subcutaneous soln pref syringe  
0.6 mg/0.6 mL**

### Insulin Only

**FIASP – insulin aspart (with  
niacinamide) inj 100 unit/mL**

**FIASP FLEXTOUCH – insulin aspart  
(with niacinamide) soln  
pen-injector 100 unit/mL**

**FIASP PENFILL – insulin aspart  
(with niacinamide) soln cartridge  
100 unit/mL**

**HUMALOG – insulin lispro inj soln  
100 unit/mL**

**HUMALOG – insulin lispro soln  
cartridge 100 unit/mL**

**HUMALOG JUNIOR KWIKPEN – insulin  
lispro soln pen-injector  
100 unit/mL (0.5 unit dial)**

**HUMALOG KWIKPEN – insulin lispro  
soln pen-injector  
100 unit/mL (1 unit dial),  
200 unit/mL**

**HUMALOG MIX 50/50 KWIKPEN –  
insulin lispro prot & lispro sus  
pen-inj 100 unit/mL (50-50)**

**HUMALOG MIX 75/25 – insulin lispro  
prot & lispro inj  
100 unit/mL (75-25)**

**HUMALOG MIX 75/25 KWIKPEN –  
insulin lispro prot & lispro sus  
pen-inj 100 unit/mL (75-25)**

**HUMALOG TEMPO PEN – insulin  
lispro soln pen-inj w/transmitter  
port 100 unit/mL**

**HUMULIN 70/30 – insulin nph  
isophane & regular human inj  
100 unit/mL (70-30)**

**HUMULIN 70/30 KWIKPEN – insulin  
nph & regular susp pen-inj  
100 unit/mL (70-30)**

**HUMULIN N – insulin nph (human)  
(isophane) inj 100 unit/mL**

**HUMULIN N KWIKPEN – insulin nph  
(human) (isophane) susp pen-  
injector 100 unit/mL**

**HUMULIN R – insulin regular (human)  
inj 100 unit/mL**

**HUMULIN R U-500 (CONCENTR –  
insulin regular (human) inj  
500 unit/mL**

**HUMULIN R U-500 KWIKPEN – insulin  
regular (human) soln pen-injector  
500 unit/mL**

**INSULIN GLARGINE-YFGN – insulin  
glargine-yfgn inj 100 unit/mL**

**INSULIN GLARGINE-YFGN – insulin  
glargine-yfgn soln pen-injector  
100 unit/mL**

# 2026 HDHP-HSA Preventive Drug List for BMC Software

LYUMJEV – insulin lispro-aabc inj 100 unit/mL	NOVOLOG FLEXPEN – insulin aspart soln pen-injector 100 unit/mL	GLYXAMBI – empagliflozin-linagliptin tab 10-5 mg, 25-5 mg
LYUMJEV KWIKPEN – insulin lispro- aabc soln pen-inj 100 unit/mL (1 unit dial)	NOVOLOG FLEXPEN RELION – insulin aspart soln pen-injector 100 unit/mL	<b>glyburide tab 1.25 mg, 2.5 mg, 5 mg</b>
LYUMJEV KWIKPEN – insulin lispro- aabc soln pen-injector 200 unit/mL	NOVOLOG MIX 70/30 – insulin aspart prot & aspart (human) inj 100 unit/mL (70-30)	<b>glyburide-metformin tab 1.25-250 mg, 2.5-500 mg, 5-500 mg</b>
LYUMJEV TEMPO PEN – insulin lispro-aabc soln pen-inj w/transmit port 100 unit/mL	NOVOLOG MIX 70/30 PREFILL – insulin aspart prot & aspart sus pen-inj 100 unit/mL (70-30)	JANUMET – sitagliptin-phosphate- metformin hcl tab 50-500 mg, 50-1000 mg
NOVOLIN 70/30 – insulin nph isophane & regular human inj 100 unit/mL (70-30)	NOVOLOG MIX 70/30 RELION – insulin aspart prot & aspart (human) inj 100 unit/mL (70-30)	JANUMET XR – sitagliptin phosphate- metformin hcl tab er 24hr 50-500 mg, 50-1000 mg, 100-1000 mg
NOVOLIN 70/30 FLEXPEN – insulin nph & regular susp pen-inj 100 unit/mL (70-30)	NOVOLOG PENFILL – insulin aspart soln cartridge 100 unit/mL	JANUVIA – sitagliptin phosphate tab 25 mg, 50 mg, 100 mg (base equivalent)
NOVOLIN 70/30 FLEXPEN REL – insulin nph & regular susp pen-inj 100 unit/mL (70-30)	NOVOLOG RELION – insulin aspart inj soln 100 unit/mL	JARDIANCE – empagliflozin tab 10 mg, 25 mg
NOVOLIN 70/30 RELION – insulin nph isophane & regular human inj 100 unit/mL (70-30)	SEMGLEE – insulin glargine-yfgn inj 100 unit/mL	<b>metformin hcl tab 500 mg, 850 mg, 1000 mg</b>
NOVOLIN N – insulin nph (human) (isophane) inj 100 unit/mL	SEMGLEE – insulin glargine-yfgn soln pen-injector 100 unit/mL	<b>metformin hcl tab er 24hr 500 mg, 750 mg</b>
NOVOLIN N FLEXPEN – insulin nph (human) (isophane) susp pen-injector 100 unit/mL	TOUJEO MAX SOLOSTAR – insulin glargine soln pen-injector 300 unit/mL (2 unit dial)	<b>nateglinide tab 60 mg, 120 mg</b>
NOVOLIN N FLEXPEN RELION – insulin nph (human) (isophane) susp pen-injector 100 unit/mL	TOUJEO SOLOSTAR – insulin glargine soln pen-injector 300 unit/mL (1 unit dial)	<b>pioglitazone hcl tab 15 mg, 30 mg, 45 mg (base equivalent) (Actos)</b>
NOVOLIN N RELION – insulin nph (human) (isophane) inj 100 unit/mL	TRESIBA – insulin degludec inj 100 unit/mL	<b>pioglitazone hcl-metformin hcl tab 15-500 mg</b>
NOVOLIN R – insulin regular (human) inj 100 unit/mL	TRESIBA FLEXTOUCH – insulin degludec soln pen-injector 100 unit/mL, 200 unit/mL	<b>pioglitazone hcl-metformin hcl tab 15-850 mg (Actoplus met)</b>
NOVOLIN R FLEXPEN – insulin regular (human) soln pen-injector 100 unit/mL		<b>repaglinide tab 0.5 mg, 1 mg, 2 mg</b>
NOVOLIN R FLEXPEN RELION – insulin regular (human) soln pen-injector 100 unit/mL		SYNJARDY – empagliflozin-metformin hcl tab 5-500 mg, 5-1000 mg, 12.5-500 mg, 12.5-1000 mg
NOVOLIN R RELION – insulin regular (human) inj 100 unit/mL		SYNJARDY XR – empagliflozin- metformin hcl tab er 24hr 5-1000 mg, 10-1000 mg, 12.5-1000 mg, 25-1000 mg
NOVOLOG – insulin aspart inj 100 unit/mL		TRIJARDY XR – empagliflozin-linagliptin- metformin tab er 24hr 5-2.5-1000 mg, 10-5-1000 mg, 12.5-2.5-1000 mg, 25-5-1000 mg
	<b>Oral Only</b>	XIGDUO XR – dapagliflozin prop- metformin hcl tab er 24hr 5-500 mg, 10-500 mg, 2.5-1000 mg, 5-1000 mg, 10-1000 mg
	<b>acarbose tab 25 mg, 50 mg, 100 mg</b>	
	FARXIGA – dapagliflozin propanediol tab 5 mg, 10 mg (base equivalent)	
	<b>glimepiride tab 1 mg, 2 mg, 4 mg</b>	
	<b>glipizide tab 5 mg, 10 mg</b>	
	<b>glipizide tab er 24hr 2.5 mg</b>	
	<b>glipizide tab er 24hr 5 mg, 10 mg</b> (Glucotrol xl)	
	<b>glipizide-metformin hcl tab 2.5-250 mg, 2.5-500 mg, 5-500 mg</b>	

# 2026 HDHP-HSA Preventive Drug List for BMC Software

## GLP1 Oral & Other Injectables Preferred Brands

MOUNJARO – tirzepatide soln  
auto-injector 2.5 mg/0.5 mL,  
5 mg/0.5 mL, 7.5 mg/0.5 mL,  
10 mg/0.5 mL, 12.5 mg/0.5 mL,  
15 mg/0.5 mL

OZEMPIC – semaglutide  
soln pen-inj  
0.25 or 0.5 mg/dose (2 mg/3 mL),  
1 mg/dose (4 mg/3 mL),  
2 mg/dose (8 mg/3 mL)

RYBELSUS – semaglutide tab  
3 mg, 7 mg, 14 mg

SOLIQUA 100/33 – insulin glargine-  
lixisenatide sol pen-inj  
100-33 unit-mcg/mL

TRULICITY – dulaglutide soln auto-  
injector 0.75 mg/0.5 mL,  
1.5 mg/0.5 mL, 3 mg/0.5 mL,  
4.5 mg/0.5 mL

XULTOPHY 100/3.6 – insulin  
degludec-liraglutide sol pen-inj  
100-3.6 unit-mg/mL

## Diabetic Supplies

### Calibration Liquids

ABBOTT FREESTYLE  
ABBOTT MEDISENSE,  
HIGH/MID/LOW  
ABBOTT PRECISION  
ASCENSIA CONTOUR  
ASCENSIA CONTOUR NEXT

### Insulin Syringes

### Lancets

### Lancet Devices

### Pen Needles

### Test Strips & Discs

ABBOTT FREESTYLE, INSULINX,  
LITE, PRECISION NEO  
ABBOTT PRECISION SOF-TACT  
ABBOTT OPTIUMEZ  
ASCENSIA CONTOUR  
ASCENSIA CONTOUR NEXT

## Continuous Glucose Monitors (CGMs) & Associated Supplies

DEXCOM G6 Receiver  
DEXCOM G7 Receiver  
DEXCOM G6 Sensor  
DEXCOM G7 Sensor  
DEXCOM G6 Transmitter

## Insulin Pumps and Associated Supplies

### Insulin Infusion Disposable Pump Kits

OMNIPOD DASH INTRO KIT  
OMNIPOD 5 DEXCOM G7G6  
INTRO KIT  
OMNIPOD 5 LIBRE2 PLUS G6 KIT  
ILET INSULIN PUMP  
ILET STARTER KIT  
TWIIST STARTER KIT

### Insulin Infusion Disposable Pump Supplies

OMNIPOD DASH PODS  
OMNIPOD 5 LIBRE2 PLUS G6 PODS  
OMNIPOD 5 DEXCOM G7G6 PODS  
ILET INSULIN INFUSION KIT  
TWIIST REFILL KIT  
TWIIST REFILL KIT/INFUSION

## Fluoride Supplements

### Dental Products and Combinations

sodium fluoride cream 1.1%  
(Prevident 5000 plus)  
sodium fluoride gel 1.1% (0.5% f)  
(Prevident Fluoride)  
sodium fluoride paste 1.1%  
(Prevident 5000 Ortho Defe)  
sodium fluoride rinse 0.2%  
(Prevident Rinse)  
stannous fluoride conc 0.63%  
stannous fluoride gel 0.4%  
(Gel-Kam)

### Supplements and Combinations

SODIUM FLUORIDE – sodium fluoride  
soln 0.5 mg/mL f  
(from 1.1 mg/mL naf)

SODIUM FLUORIDE – sodium fluoride  
tab 0.5 mg f (from 1.1 mg naf),  
1 mg f (from 2.2 mg naf)

**sodium fluoride chew tab**  
0.25 mg f (from 0.55 mg naf),  
0.5 mg f (from 1.1 mg naf),  
1 mg f (from 2.2 mg naf)

## High Blood Pressure

acebutolol hcl cap 200 mg,  
400 mg  
amiloride hcl tab 5 mg  
amlodipine besylate tab 2.5 mg,  
5 mg, 10 mg (base equivalent)  
(Norvasc)  
amlodipine besylate-benazepril  
hcl cap 2.5-10 mg, 5-40 mg  
amlodipine besylate-benazepril  
hcl cap 5-10 mg, 5-20 mg,  
10-20 mg, 10-40 mg (Lotrel)  
amlodipine besylate-olmesartan  
medoxomil tab 5-20 mg,  
5-40 mg, 10-20 mg, 10-40 mg  
(Azor)  
amlodipine besylate-valsartan tab  
5-160 mg, 5-320 mg, 10-160 mg,  
10-320 mg (Exforge)  
amlodipine-valsartan-  
hydrochlorothiazide tab  
5-160-12.5 mg, 5-160-25 mg,  
10-160-12.5 mg, 10-160-25 mg,  
10-320-25 (Exforge hct)  
atenolol tab 25 mg, 50 mg,  
100 mg (Tenormin)  
atenolol & chlorthalidone tab  
50-25 mg, (Tenoretic 50)  
100-25 mg (Tenoretic 100)  
benazepril hcl tab 5 mg  
benazepril hcl tab 10 mg, 20 mg,  
40 mg (Lotensin)  
benazepril & hydrochlorothiazide  
tab 5-6.25 mg  
benazepril & hydrochlorothiazide  
tab 10-12.5 mg, 20-12.5 mg,  
20-25 mg (Lotensin hct)  
betaxolol hcl tab 10 mg, 20 mg

# 2026 HDHP-HSA Preventive Drug List for BMC Software

bisoprolol & hydrochlorothiazide tab 2.5-6.25 mg, 5-6.25 mg, 10-6.25 mg

bisoprolol fumarate tab 5 mg, 10 mg

bumetanide tab 0.5 mg (Bumex)

bumetanide tab 1 mg, 2 mg

candesartan cilexetil tab 4 mg, 8 mg, 16 mg, 32 mg (Atacand)

candesartan cilexetil-hydrochlorothiazide tab 16-12.5 mg, 32-12.5 mg, 32-25 mg (Atacand hct)

captopril tab 12.5 mg, 25 mg, 50 mg, 100 mg

carvedilol tab 3.125 mg, 6.25 mg, 12.5 mg, 25 mg (Coreg)

chlorthalidone tab 25 mg, 50 mg

clonidine hcl tab 0.1 mg, 0.2 mg, 0.3 mg

clonidine td patch weekly 0.1 mg/24hr (Catapres-TTS-1), 0.2 mg/24hr (Catapres-TTS-2), 0.3 mg/24hr (Catapres-TTS-3)

diltiazem hcl cap er 12hr 60 mg, 90 mg, 120 mg

diltiazem hcl cap er 24hr 120 mg, 180 mg, 240 mg

diltiazem hcl coated beads cap er 24hr 120 mg, 180 mg, 240 mg, 300 mg (Cardizem cd)

diltiazem hcl extended release beads cap er 24hr 120 mg, 180 mg, 240 mg, 300 mg, 360 mg, 420 mg (Tiazac)

diltiazem hcl tab 30 mg, 60 mg, 120 mg (Cardizem)

diltiazem hcl tab 90 mg

diltiazem hcl tab er 24hr 120 mg (Cardizem la)

doxazosin mesylate tab 1 mg, 2 mg, 4 mg, 8 mg (Cardura)

enalapril maleate tab 2.5 mg, 5 mg, 10 mg, 20 mg (Vasotec)

enalapril maleate & hydrochlorothiazide tab 5-12.5 mg

enalapril maleate & hydrochlorothiazide tab 10-25 mg (Vaseretic)

enalapril maleate oral soln 1 mg/mL (Epaned)

eplerenone tab 25 mg, 50 mg (Inspra)

felodipine tab er 24hr 2.5 mg, 5 mg, 10 mg

fosinopril sodium tab 10 mg, 20 mg, 40 mg

fosinopril sodium & hydrochlorothiazide tab 10-12.5 mg, 20-12.5 mg

furosemide oral soln 10 mg/mL

furosemide tab 20 mg, 40 mg, 80 mg (Lasix)

guanfacine hcl tab 1 mg, 2 mg

hydralazine hcl tab 10 mg, 25 mg, 50 mg, 100 mg

hydrochlorothiazide cap 12.5 mg

hydrochlorothiazide tab 12.5 mg, 25 mg, 50 mg

indapamide tab 1.25 mg, 2.5 mg

irbesartan tab 75 mg

irbesartan tab 150 mg, 300 mg (Avapro)

irbesartan-hydrochlorothiazide tab 150-12.5 mg, 300-12.5 mg (Avalide)

isosorbide dinitrate-hydralazine hcl tab 20-37.5 mg (Bidil)

labetalol hcl tab 100 mg, 200 mg, 300 mg

lisinopril tab 2.5 mg, 5 mg, 10 mg, 20 mg, 30 mg, 40 mg (Zestril)

lisinopril & hydrochlorothiazide tab 10-12.5 mg, 20-12.5 mg, 20-25 mg (Zestoretic)

losartan potassium tab 25 mg, 50 mg, 100 mg (Cozaar)

losartan potassium & hydrochlorothiazide tab 50-12.5 mg, 100-12.5 mg, 100-25 mg (Hyzaar)

metolazone tab 2.5 mg, 5 mg, 10 mg

metoprolol succinate tab er 24hr 25 mg, 50 mg, 100 mg, 200 mg (tartrate equivalent) (Toprol xl)

metoprolol tartrate tab 25 mg, 37.5 mg, 75 mg

metoprolol tartrate tab 50 mg, 100 mg (Lopressor)

metoprolol & hydrochlorothiazide tab 50-25 mg, 100-25 mg, 100-50 mg

minoxidil tab 2.5 mg, 10 mg

moexipril hcl tab 7.5 mg, 15 mg

nadolol tab 20 mg, 40 mg, 80 mg

nebivolol hcl tab 2.5 mg, 5 mg, 10 mg, 20 mg (base equivalent) (Bystolic)

nifedipine cap 10 mg, 20 mg

nifedipine tab er 24hr 30 mg, 60 mg, 90 mg

nifedipine tab er 24hr osmotic release 30 mg, 60 mg, 90 mg (Procardia xl)

olmesartan medoxomil tab 5 mg, 20 mg, 40 mg (Benicar)

olmesartan medoxomil-hydrochlorothiazide tab 20-12.5 mg, 40-12.5 mg, 40-25 mg (Benicar hct)

olmesartan-amlodipine-hydrochlorothiazide tab 20-5-12.5 mg, 40-5-12.5 mg, 40-5-25 mg, 40-10-12.5 mg, 40-10-25 mg (Tribenzor)

perindopril erbumine 4 mg

phenoxybenzamine hcl cap 10 mg (Dibenzyline)

pindolol tab 5 mg, 10 mg

prazosin hcl cap 1 mg, 2 mg, 5 mg

propranolol hcl cap er 24hr 60 mg, 80 mg, 120 mg, 160 mg (Inderal la)

propranolol hcl tab 10 mg, 20 mg, 40 mg, 60 mg, 80 mg

quinapril hcl tab 5 mg, 10 mg, 20 mg, 40 mg (Accupril)

# 2026 HDHP-HSA Preventive Drug List for BMC Software

quinapril-hydrochlorothiazide tab  
10-12.5 mg, 20-12.5 mg  
(Accuretic)

ramipril cap 1.25 mg, 5 mg

ramipril cap 2.5 mg, 10 mg (Altace)

spironolactone tab 25 mg, 50 mg,  
100 mg (Aldactone)

spironolactone &  
hydrochlorothiazide tab  
25-25 mg

telmisartan tab 20 mg

telmisartan tab 40 mg, 80 mg  
(Micardis)

terazosin hcl cap 1 mg, 2 mg,  
5 mg, 10 mg (base equivalent)

torseamide tab 5 mg, 10 mg,  
20 mg, 100 mg

trandolapril tab 1 mg, 2 mg, 4 mg  
triamterene cap 50 mg, 100 mg  
(Dyrenium)

triamterene & hydrochlorothiazide  
cap 37.5-25 mg

triamterene & hydrochlorothiazide  
tab 37.5-25 mg, 75-50 mg

valsartan tab 40 mg, 80 mg,  
160 mg, 320 mg (Diovan)

valsartan-hydrochlorothiazide tab  
80-12.5 mg, 160-12.5 mg,  
160-25 mg, 320-12.5 mg,  
320-25 mg (Diovan hct)

verapamil hcl cap er 24hr 120 mg,  
180 mg, 240 mg (Verelan)

verapamil hcl tab 40 mg, 80 mg,  
120 mg

verapamil hcl tab er 120 mg,  
180 mg, 240 mg


## High Cholesterol Injectable PCSK-9s

REPATHA – evolocumab  
subcutaneous soln prefilled  
syringe 140 mg/mL

REPATHA PUSHTRONEX SYSTEM –  
evolocumab subcutaneous soln  
cartridge/infusor 420 mg/3.5 mL

REPATHA SURECLICK – evolocumab  
subcutaneous soln auto-injector  
140 mg/mL

## High Cholesterol Orals

atorvastatin calcium tab 10 mg,  
20 mg, 40 mg, 80 mg  
(base equivalent) (Lipitor) 

cholestyramine light powder  
4 gm/dose (Questran Light)

cholestyramine powder  
4 gm/dose (Questran)

colesevelam hcl tab 625 mg  
(Welchol)

colestipol hcl granule packets  
5 gm

colestipol hcl granules 5 gm  
(Colestid)

colestipol hcl tab 1 gm (Colestid)


ezetimibe tab 10 mg (Zetia)  
ezetimibe-simvastatin tab  
10-10 mg, 10-20 mg, 10-40 mg,  
10-80 mg (Vytorin)


fenofibrate tab 48 mg, 145 mg  
(Tricor)

fenofibrate tab 54 mg, 160 mg  
fenofibrate micronized cap 67 mg,  
134 mg, 200 mg

gemfibrozil tab 600 mg (Lopid)  
icosapent ethyl cap 0.5 gm, 1 gm  
(Vascepa)

lovastatin tab 10 mg

lovastatin tab 20 mg, 40 mg 

niacin tab er 500 mg, 750 mg,  
1000 mg (antihyperlipidemic)  
pravastatin sodium tab 10 mg,  
20 mg, 40 mg, 80 mg 

rosuvastatin calcium tab 5 mg,  
10 mg, 20 mg, 40 mg (Crestor)

simvastatin tab 10 mg, 20 mg,  
40 mg (Zocor)

simvastatin tab 5 mg, 80 mg

## HIV/AIDS

abacavir sulfate soln 20 mg/mL  
(base equiv) (Ziagen)

abacavir sulfate tab 300 mg (base  
equiv)

abacavir sulfate-lamivudine tab  
600-300 mg (Epzicom)

APRETUDE – cabotegravir im extended  
release susp 600 mg/3 mL

atazanavir sulfate cap 150 mg  
(base equiv)

atazanavir sulfate cap 200 mg,  
300 mg (base equiv) (Reyataz)

BIKTARVY – bictegravir-emtricitabine-  
tenofovir af tab 30-120-15 mg,  
50-200-25 mg

CIMDUO – lamivudine-tenofovir  
disoproxil fumarate tab  
300-300 mg

darunavir tab 600 mg, 800 mg  
(Prezista)

DELSTRIGO – doravirine-lamivudine-  
tenofovir df tab 100-300-300 mg

DESCOVY – emtricitabine-tenofovir  
alafenamide fumarate tab  
120-15 mg, 200-25 mg

DOVATO – dolutegravir sodium-  
lamivudine tab 50-300 mg  
(base eq)

efavirenz tab 600 mg

efavirenz-emtricitabine-tenofovir  
df tab 600-200-300 mg

efavirenz-lamivudine-tenofovir df  
tab 600-300-300 mg

emtricitabine cap 200 mg (Emtriva)  
emtricitabine-rilpivirine-tenofovir  
dr tab 200-25-300 mg (Complera)

emtricitabine-tenofovir disoproxil  
fumarate tab 100-150 mg,  
133-200 mg, 167-250 mg  
(Truvada)

emtricitabine-tenofovir disoproxil  
fumarate tab 200-300 mg  
(Truvada)

etravirine tab 100 mg, 200 mg  
(Intelence)

# 2026 HDHP-HSA Preventive Drug List for BMC Software

EVOTAZ – atazanavir sulfate-  
cobicistat tab 300-150 mg  
(base equiv)

**fosamprenavir calcium tab 700 mg  
(base equiv)**

GENVOYA – elvitegravir-cobic-  
emtricitab-tenofovir af tab  
150-150-200-10 mg

INTELENCE – etravirine tab 25 mg

ISENTRESS – raltegravir potassium  
chew tab 25 mg, 100 mg (base  
equiv)

ISENTRESS – raltegravir potassium  
packet for susp 100 mg (base  
equiv)

ISENTRESS – raltegravir potassium  
tab 400 mg (base equiv)

ISENTRESS HD – raltegravir

potassium tab 600 mg (base equiv)

JULUCA – dolutegravir sodium-  
rilpivirine hcl tab 50-25 mg  
(base eq)

KALETRA – lopinavir-ritonavir soln  
400-100 mg/5 mL (80-20 mg/mL)

**lamivudine oral soln 10 mg/mL  
(Epivir)**

**lamivudine tab 150 mg, 300 mg  
(Epivir)**

**lamivudine-zidovudine tab  
150-300 mg**

**lopinavir-ritonavir tab 100-25 mg,  
200-50 mg (Kaletra)**

**maraviroc tab 150 mg, 300 mg  
(Selzentry)**

**nevirapine tab 200 mg**

**nevirapine tab er 24hr 400 mg**

ODEFSEY – emtricitabine-rilpivirine-  
tenofovir af tab 200-25-25 mg

PREZCOBIX – darunavir-cobicistat tab  
800-150 mg

PREZISTA – darunavir oral susp  
100 mg/mL

PREZISTA – darunavir tab 75 mg,  
150 mg

**ritonavir tab 100 mg (Norvir)**

SYM TUZA TAB – darunavir-cobic-  
emtricitab-tenofovir af tab  
800-150-200-10 mg

**tenofovir disoproxil fumarate tab  
300 mg (Viread)**

TIVICAY – dolutegravir sodium tab  
10 mg, 25 mg, 50 mg (base equiv)

TIVICAY PD – dolutegravir sodium tab  
for oral susp 5 mg (base  
equivalent)

TRIUMEQ – abacavir-dolutegravir-  
lamivudine tab 600-50-300 mg

TRIUMEQ PD – abacavir-dolutegravir-  
lamivudine tab for oral sus  
60-5-30 mg

VIREAD – tenofovir disoproxil  
fumarate oral powder 40 mg/gm

VIREAD – tenofovir disoproxil  
fumarate tab 150 mg, 200 mg,  
250 mg

**zidovudine cap 100 mg (Retrovir)**

**zidovudine syrup 10 mg/mL  
(Retrovir)**

**zidovudine tab 300 mg,**

## **Migraine Prophylaxis CGRPs Injectable**

AIMOVIG – erenumab-aooe  
subcutaneous soln auto-injector  
70 mg/mL, 140 mg/mL

AJOVY – fremanezumab-vrfm  
subcutaneous soln auto-inj  
225 mg/1.5 mL

AJOVY – fremanezumab-vrfm  
subcutaneous soln pref syr  
225 mg/1.5 mL

EMGALITY – galcanezumab-gnlm  
subcutaneous soln auto-injector  
120 mg/mL

EMGALITY – galcanezumab-gnlm  
subcutaneous soln prefilled syr  
120 mg/mL

## **Migraine Prophylaxis CGRPs Oral**

NURTEC – rimegepant sulfate tab  
disint 75 mg

QULIPTA – atogepant tab 10 mg,  
30 mg, 60 mg

UBRELVY – ubrogepant tab 50 mg,  
100 mg


## **Osteoporosis**

**alendronate sodium tab 10 mg,  
35 mg**

**alendronate sodium tab 70 mg  
(Fosamax)**

**calcitonin (salmon) nasal soln  
200 unit/act**

**ibandronate sodium tab 150 mg  
(base equivalent)**

**raloxifene hcl tab 60 mg  
(Evista) **

**risedronate sodium tab 30 mg**

**risedronate sodium tab 35 mg,  
150 mg (Actonel)**

## **Respiratory**

**acetylcysteine inhal soln 10%, 20%**

ADVAIR HFA – fluticasone-salmeterol  
inhal aerosol 45-21 mcg/act,  
115-21 mcg/act, 230-21 mcg/act

AIRSUPRA – albuterol-budesonide  
inhalation aerosol 90-80 mcg/act

**albuterol sulfate inhal aero  
108 mcg/act**

**(90 mcg base equivalent)**

**albuterol sulfate soln nebu**

**0.083% (2.5 mg/3 mL),**

**0.5% (5 mg/mL)**

**albuterol sulfate soln nebu**

**0.63 mg/3 mL, 1.25 mg/3 mL**

**(base equivalent)**

**albuterol sulfate syrup 2 mg/5 mL**

**albuterol sulfate tab 2 mg, 4 mg**

ANORO ELLIPTA – umeclidinium-  
vilanterol aero powd ba  
62.5-25 mcg/act

# 2026 HDHP-HSA Preventive Drug List for BMC Software

## **arformoterol tartrate soln nebu 15 mcg/2 mL (base equivalent) (Brovana)**

ARNUITY ELLIPTA – fluticasone  
furoate aerosol powder breath  
activ 50 mcg/act, 100 mcg/act,  
200 mcg/act

ASMANEX HFA – mometasone  
furoate inhal aerosol suspension  
50 mcg/act, 100 mcg/act,  
200 mcg/act

ASMANEX TWISTHALER  
30 METERED – mometasone  
furoate inhal powd 110 mcg/act  
(breath activated)

ASMANEX TWISTHALER 30, 60,  
120 METERED – mometasone  
furoate inhal powd 220 mcg/act  
(breath activated)

BREO ELLIPTA – fluticasone furoate  
vilanterol aero powd ba  
50-25 mcg/act, 100-25 mcg/act,  
200-25 mcg/act

BREZTRI AEROSPHERE – budesonide-  
glycopyrrolate-formoterol aers  
160-9-4.8 mcg/act

## **budesonide-formoterol fumarate dihyd aerosol 80-4.5 mcg/act, 160-4.5 mcg/act (Symbicort)**

## **budesonide inhalation susp 0.25 mg/2 mL, 0.5 mg/2 mL, 1 mg/2 mL (Pulmicort)**

COMBIVENT RESPIMAT –  
ipratropium-albuterol inhal aerosol  
soln 20-100 mcg/act

## **cromolyn sodium soln nebu 20 mg/2 mL**

DULERA – mometasone furoate-  
formoterol fumarate aerosol  
50-5 mcg/act, 100-5 mcg/act,  
200-5 mcg/act

FLUTICASONE PROPIONATE/SA –  
futicasone-salmeterol aer powder  
ba 55-14 mcg/act,  
113-14 mcg/act, 232-14 mcg/act

## **fluticasone-salmeterol aer powder ba 100-50 mcg/act, 250-50 mcg/act, 500-50 mcg/act (Advair Diskus)**

INCRUSE ELLIPTA – umeclidinium br  
aero powd breath act  
62.5 mcg/act (base equivalent)

## **ipratropium bromide inhal soln 0.02%**

## **ipratropium-albuterol nebu soln 0.5-2.5(3) mg/3 mL**

## **levalbuterol hcl soln nebu 0.31 mg/3 mL, 0.63 mg/3 mL, 1.25 mg/3 mL (base equivalent)**

## **levalbuterol hcl soln nebu conc 1.25 mg/0.5 mL (base equivalent)**

## **montelukast sodium chew tab 4 mg, 5 mg (base equivalent) (Singulair)**

## **montelukast sodium tab 10 mg (base equivalent) (Singulair)**

QVAR REDHALER – beclomethasone  
diprop hfa breath act inh aer  
40 mcg/act, 80 mcg/act

## **roflumilast tab 250 mcg, 500 mcg (Daliresp)**

SEREVENT DISKUS – salmeterol  
xinafoate aer pow ba 50 mcg/act  
(base equivalent)

SPIRIVA RESPIMAT – tiotropium  
bromide monohydrate inhal  
aerosol 1.25 mcg/act, 2.5 mcg/act

STIOLTO RESPIMAT – tiotropium  
br-olodaterol inhal aero soln  
2.5-2.5 mcg/act

STRIVERDI RESPIMAT – olodaterol hcl  
inhal aerosol soln  
2.5 mcg/act (base equivalent)

SYMBICORT – budesonide-formoterol  
fumarate dihyd aerosol  
80-4.5 mcg/act, 160-4.5 mcg/act

## **terbutaline sulfate tab 2.5 mg, 5 mg**

## **theophylline elixir 80 mg/15 mL theophylline soln 80 mg/15 mL**

## **theophylline tab er 12hr 300 mg, 450 mg**

## **theophylline tab er 24hr 400 mg, 600 mg**

TRELEGY ELLIPTA – fluticasone  
umeclidinium- vilanterol aebp  
100-62.5-25 mcg/act,  
200-62.5-25 mcg/act

VENTOLIN HFA – albuterol sulfate  
inhal aero 108 mcg/act  
(90 mcg base equivalent)

## **zafirlukast tab 10 mg, 20 mg (Accolate)**

## **Respiratory Devices & Supplies – Devices**

AEROCHAMBER HOLDING CHAMB

AEROCHAMBER MINI AEROSOL

AEROCHAMBER MV

AEROCHAMBER PLUS FLOW VU

AEROCHAMBER Z-STAT PLUS V

AEROCHAMBER Z-STAT PLUS –  
F, L, M, S

AEROVENT PLUS HOLDING CHA

BREATHE COMFORT ANTI-STAT

BREATHE EASE MASK – SMALL,  
MEDIUM, LARGE

BREATHERITE VALVED MDI CH

CLEVER CHOICE ANTI-STATIC

COMPACT SPACE CHAMBER/ANT

DETACHABLE FACE MASK

EASIVENT

EASIVENT/MASK – SMALL, MEDIUM,  
LARGE

EQ SPACE CHAMBER ANTI-STA

FLEXICHAMBER

INSPIREASE DRUG DELIVERY

MICROCHAMBER

MICROSPACER

OPTICHAMBER ADVANTAGE

OPTICHAMBER ADVANTAGE – SMA,  
MED, LAR

OPTICHAMBER DIAMOND

OPTICHAMBER DIAMOND – SMALL,  
MEDIU, LARGE

OPTICHAMBER DIAMOND FACE

MASK – MEDIUM, LARGE

OPTICHAMBER DIAMOND/SMALL

# 2026 HDHP-HSA Preventive Drug List for BMC Software

OPTICHAMBER FACE MASK – SMA, MED, LAR

OPTICHAMBER VALVED HOLDING OPTICHAMBER/MASK

POCKET CHAMBER

POCKET SPACER

PROCARE SPACE CHAMBER W

PRO COMFORT INHALER SPACE

PROCHAMBER VALVED HOLDING

PURE COMFORT INHALER SPAC

RITFLO

VORTEX HOLDING CHAMBER/MASK/ CHILDS/FROG

VORTEX NON ELECTROSTATIC

VORTEX VALVED HOLDING CHA

## Respiratory Devices & Supplies – Masks

FLEXICHAMBER ADULT MASK/S

FLEXICHAMBER CHILD MASK – S, L

MASK VORTEX/CHILD/FROG

MASK VORTEX/TODDLER – LADY, LADYBUG

PANDA MASK – SMALL, MEDIUM, LARGE

PEDIATRIC PANDA MASK

## Respiratory Devices & Supplies – Bags

INSPIREASE RESERVOIR BAGS

## Tobacco Cessation

Your health plan covers two 90-day treatments for tobacco use cessation medicine per benefit period.

### bupropion hcl (smoking deterrent) tab er 12hr 150 mg

NICODERM CQ – nicotine td patch 24hr 7 mg/24hr, 14 mg/24hr, 21 mg/24hr

NICORETTE – nicotine polacrilex gum 2 mg, 4 mg

NICORETTE STARTER KIT – nicotine polacrilex gum 2 mg, 4 mg

**nicotine polacrilex gum 2 mg, 4 mg**

**nicotine polacrilex lozenge**

**2 mg, 4 mg**

**nicotine td patch 24hr 7 mg/24hr, 14 mg/24hr, 21 mg/24hr**

NICOTINE TRANSDERMAL SYST – nicotine td patch 24hr kit 21-14-7 mg/24hr

NICOTROL INHALER – nicotine inhaler system 10 mg (4 mg delivered)

NICOTROL NS – nicotine nasal spray 10 mg/mL (0.5 mg/spray)

### varenicline tartrate tab

**11 x 0.5 mg & 42 x 1 mg**

**start pack**

**varenicline tartrate tab 0.5 mg, 1 mg (base equivalent)**

## Vaccines

ABRYSVO – RSV pre-fusion f

A&B vac recomb for im soln 120 mcg/0.5 mL

ACTHIB – haemophilus b

polysaccharide conjugate vaccine for inj

ADACEL – tet tox-diph-acell pertuss ad inj

5-2-15.5 lf-lf-mcg/0.5 mL

AFLURIA – influenza virus vaccine

split pf susp pref syringe 0.5 mL

AREXVY – rsvpref3 vaccine recomb

adjuvanted for im susp 120 mcg/0.5 mL

BEXSERO – meningococcal vac b

(recomb omv adjuv) inj prefilled syringe

BOOSTRIX – tet-diph-acell pertuss

ad pref syr 5-2.5-18.5 lf-mcg/0.5 mL

CAPVAXIVE – pneumococcal

21-valent conjugate vaccine soln pref syr 0.5 mL

COMIRNATY – covid-19 mrna vac

tris-pfizer im susp pref syr 30 mcg/0.3 mL

DAPTACEL – diph, acellular pert

& tet tox inj 15 lf-23 mcg-5 lf/0.5 mL

ENGERIX-B – hepatitis b vaccine (recombinant) susp 20 mcg/mL

ENGERIX-B – hepatitis b vaccine (recombinant) susp pref syr 10 mcg/0.5 mL, 20 mcg/mL

FLUAD – influenza vac type a&b surface ant adj susp pref syr 0.5 mL

FLUARIX – influenza virus vaccine split pf susp pref syringe 0.5 mL

FLUBLOK – influenza virus vacc recombinant ha pf soln pref syr 0.5 mL

FLUCELVAX – influenza virus vac tiss-cult subunit susp pref syr 0.5 mL

FLULAVAL – influenza virus vaccine split pf susp pref syringe 0.5 mL

FLUMIST NASAL VACCINE – influenza virus vaccine live intranasal liquid

FLUZONE – influenza virus vaccine split pf susp pref syringe 0.5 mL

FLUZONE HIGH-DOSE – influenza virus vac split high-dose pf susp pref syr 0.5 mL

GARDASIL 9 – human papillomavirus (hvp) 9-valent recomb vac im susp

GARDASIL 9 – human papillomavirus (hvp) 9-valent recomb vac susp pref syr

HAVRIX – hepatitis a vaccine inj susp 720 el unit/0.5 mL, 1440 el unit/mL

HEPLISAV-B – hepatitis b vaccine recomb adjuvanted pref syr 20 mcg/0.5 mL

HIBERIX – haemophilus b polysaccharide conjugate vac for inj 10 mcg

INFANRIX – diph, acellular pert & tet tox inj 25 lf-58 mcg-10 lf/0.5 mL

IPOL INACTIVATED IPV – poliovirus vaccine, ipv injection

JYNNEOS – smallpox & monkeypox vac, live, non-replicating inj 0.5 mL

# 2026 HDHP-HSA Preventive Drug List for BMC Software

KINRIX – diph-tetanus-acell pert-polio, ipv vacc susp pref syr 0.5 mL	PNEUMOVAX 23 – pneumococcal vaccine polyvalent soln pref syr 25 mcg/0.5 mL	VARIVAX – varicella virus vac live for subcutaneous inj 1350 pfu/0.5 mL
MENQUADFI – meningococcal (a, c, y, and w-135) tetanus conjugate vaccine	PNEUMOVAX 23/1 DOSE – pneumococcal vaccine polyvalent inj soln 25 mcg/0.5 mL	VAXELIS – diph-tet tox-ac pert ad-polio ipv-hib-hepatitis b recmb susp
MENVEO – meningococcal (a, c, y, and w-135) oligo conj vac for inj	PREVNAR 20 – pneumococcal 20-valent conjugate vaccine sus pref syr 0.5 mL	VAXELIS – diph-tet tox-ac pert ad-polio ipv-hib-hep b rec susp pre syr
MENVEO – meningococcal (a, c, y, and w-135) oligo conj vac im soln	PRIORIX – measles-mumps-rubella virus vaccines for subcutaneous susp	VAXNEUVANCE – pneumococcal 15-valent conjugate vaccine sus pref syr 0.5 mL
M-M-R II – measles-mumps rubella virus vaccines for inj soln	PROQUAD – measles-mumps-rubellavaricella virus vaccines for susp	
MNEXSPIKE INJ 2025-26 – covid-19 mrna vaccine-moderna im susp pref syr 10 mcg/0.2 mL	QUADRACEL – diph-tetanus tox ad-acell pert & polio virus, ipv vac inj	<b>Vitamins</b>
MODERNA COVID-19 VACCINE – covid-19 mrna vaccine 6mo-11yr-moderna im susp 25 mcg/0.25 mL	QUADRACEL – diph-tetanus-acell pert-polio, ipv vacc susp pref syr 0.5 mL	<b>Prenatal</b>
MRESVIA – rsv mrna pre-f vaccine im susp pref syr 50 mcg/0.5 mL	RECOMBIVAX HB – hepatitis b vaccine (recombinant) susp 5 mcg/0.5 mL, 10 mcg/mL, 40 mcg/mL	PRENATAL 19 – prenatal vit w/dss-fe fumarate-fa tab 29-1 mg
NOVAVAX COVID-19 VACCINE – covid-19 subunit vacc-novavax im susp pref syr 5 mcg/0.5 mL	RECOMBIVAX HB – hepatitis b vaccine (recombinant) susp pref syr 5 mcg/0.5 mL, 10 mcg/mL	PRENATAL 19 – prenatal vit w/fe fumarate-fa chew tab 29-1 mg
PEDIARIX – diph-tet tox-acell pert-hep b-polio ipv vac susp pref syr	ROTARIX – rotavirus vaccine, live oral susp	PRENATAL PLUS – prenatal vit w/fe fumarate-fa tab 27-1 mg
PEDVAX HIB – haemophilus b polysaccharide conj vac im susp 7.5 mcg/0.5 mL	ROTATEQ – rotavirus vaccine, live oral pentavalent soln	PRENATAL-U – prenatal w/o a vit w/fe fumarate-fa cap 106.5-1 mg
PENBRAYA – meningococcal acyw (tet conj)-mening b (rcmb) vacc for inj	SHINGRIX – zoster vac recombinant adjuvanted for im inj 50 mcg/ 0.5 mL	SE-NATAL 19 – prenatal vit w/dss-fe fumarate-fa tab 29-1 mg
PENMENVY – meningococcal acwy (oligo conj)-mening b (rcmb) vacc for inj	SPIKEVAX COVID-19 VACCINE – covid-19 mrna vaccine-moderna im susp pref syr 50 mcg/0.5 mL	SE-NATAL 19 – prenatal vit w/fe fumarate-fa chew tab 29-1 mg
PENTACEL – diph-ac per-tet tox ad-poliov-haemoph b poly vac for im susp	TENIVAC – tetanus-diphtheria toxoids (td) inj 5-2 lfu	TRINATE – prenatal vit w/fe fumarate-fa tab 28-1 mg
PFIZER-BIONTECH COVID-19 – covid-19 mrna vac tris-s 5-11y-pfizer im susp 10 mcg/0.3 mL	TRUMENBA – meningococcal group b vac (recomb) im susp prefilled syr	
PFIZER-BIONTECH COVID-19 – covid-19 mrna vac tris-s 6mo-4y-pfizer im susp 3 mcg/0.3 mL	TWINRIX – hep a-hep b vaccine susp pref syr 720-20 elu mcg/mL	<b>Weight Loss Agents (Traditional, non-GLP1)</b>
	VAQTA – hepatitis a vaccine inj susp 25 unit/0.5 mL, 50 unit/mL	LOMAIRA – phentermine hcl tab 8 mg

# 2026 HDHP-HSA Preventive Drug List for BMC Software

## **Weight Management Agents (GLP1 + combos)**

SAXENDA – liraglutide (weight  
mngmt) soln pen-injector  
18 mg/3 mL

WEGOVY – semaglutide (weight  
mngmt) soln auto-injector  
0.25 mg/0.5 mL, 0.5 mg/0.5 mL,  
1 mg/0.5 mL, 1.7 mg/0.75 mL,  
2.4 mg/0.75 mL

ZEPBOUND – tirzepatide (weight  
mngmt) soln auto-injector  
2.5 mg/0.5 mL, 5 mg/0.5 mL,  
7.5 mg/0.5 mL, 10 mg/0.5 mL  
12.5 mg/0.5 mL, 15 mg/0.5 mL