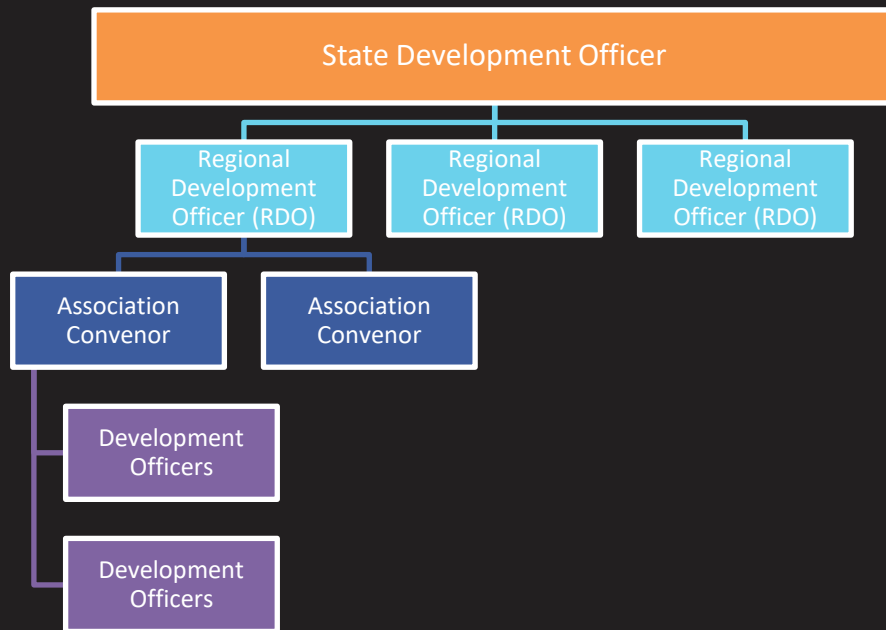




STATE SCORETABLE STRUCTURE & PATHWAY



STATE STRUCTURE



ROLES & RESPONSIBILITIES

Associations:

Convenor:

- Advertise the Intro to Scoring, Intro to Shot clock and State sanctioned Level 1 courses
- Manage appointments of officials to all senior league games (*via Refbook if applicable*)
 - Ensure association officials are compliant with BV
- Pass on communications from BV/BA as required
- Advise RDO when new level 1s are competent on all 4 positions and ready to receive official accreditation
- Nominate scorers for upgrading

Development Officers (Level 3+):

- Provide practical training to new scorers
- Provide on game assessments and complete assessment form
 - These will be reviewed by State Officer and recorded

ROLES & RESPONSIBILITIES

Regional Development Officers:

- Minimum Level 3 Official
 - Facilitate any education course and in game assessments of all officials
- Nominate scorers for upgrading
- Talent ID to promote highly skilled scorers
- Attend Nationals (when in Vic), Classic etc. to provide evaluations and talent ID
- Any support to associations that is required

ROLES & RESPONSIBILITIES

State Development Officer - Basketball Victoria:

- Develop and maintain/update online education modules and exams/assessments
- Ensure compliance of officials on Refbook
- Update Refbook with new officials and upgraded officials as required
- Advertise upcoming education opportunities
- Manage payment of fees and budget
- Oversee officials' appointments for high level tournaments (with feedback from RDOs)
 - NBL1/BigV Finals
 - National Junior Classic
 - Australian National Junior Championships
- Maintain all records pertinent to scoretable
- Any support to RDO's and associations that is required

ACCREDITATION & LEVEL STRUCTURE

CATEGORY	ROLE RELEVANCE	COURSE AND ACCREDITATION	CONTENT	MODE
INTERNATIONAL	FIBA	FIBA License Modules L5	<p>Recognition for members who:</p> <ul style="list-style-type: none"> hold a state level 3 hold a FIBA license successfully complete an International Tournament and ratified as 'National Level 4 Table Official'; or officiate a minimum of 8 FIBA sanctioned international games 	
NATIONAL	National Panels	L4	<p>Recognition for members who:</p> <ul style="list-style-type: none"> hold a state level 3 have been selected on the National Panels by NBL/BA; and have officiated a minimum of 15 games on the national leagues. 	
STATE	Coach/Assess	State Advanced Scoretable Course L3	3x3, Wheelchair, Coach, Assess & Workshop	Face-to Face Workshop & Exam
	Timer	State Intermediate Scoretable Course L2	Special Situations, Rules & Application & Workshop	Face-to-Face Session & Exam
	Sheet, Visuals & Shot Clock	State Beginner Scoretable Course L1	Introduction, Rules & Application	Online Modules & Exam (currently being built)
COMMUNITY	24 Shot Clock	Community Scoretable Modules C	Rules & Application	Online Modules (to be built)

EDUCATION PATHWAY

	Criteria for Successful Completion of Accreditation	Criteria for Upgrading
Level 1	<ul style="list-style-type: none"> • Complete Online Course • Achieve pass mark on open book exam (85%) 	<ul style="list-style-type: none"> • Receive at least 1 assessment in all positions by an RDO and 1 assessment from a Development Officer (from association visit or events) • Minimum of 12 Months of service on senior leagues • Nominated by association convenor or RDO
Level 2	<ul style="list-style-type: none"> • Attend Course • Achieve pass mark on closed book exam (75%) • Receive 1 competent assessments in each position (to be completed by RDO) 	<ul style="list-style-type: none"> • Receive at least 1 assessment in all positions by an RDO and 1 assessment from a Development Officer (from association visit or events) • Minimum of 18 Months of service of senior leagues • Nominated by association convenor or RDO
Level 3	<ul style="list-style-type: none"> • Attend Course • Achieve pass mark on open book (85%) • Receive 1 competent assessments in each position (to be completed by RDO) 	N/A – Selection onto National Panels and FIBA is overseen by BA