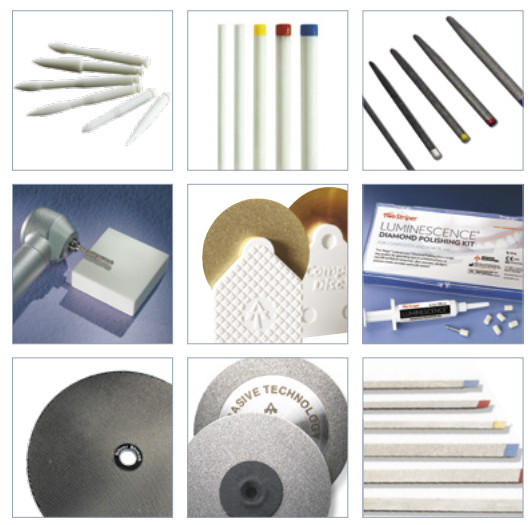


# *Two Striper*®

## PRODUCT REFERENCE GUIDE



# THE P.B.S.® BRAZE DIFFERENCE

Two Striper®, from Abrasive Technology, is the original brazed diamond dental bur. Our proprietary P.B.S.® brazing process:

- Uses a nickel chrome alloy to chemically adhere each individual crystal to a stainless steel blank.
- Creates permanent bond between diamond layer and the substrate.
- Extends working life of the tool.
- Prevents stripping and peeling.

With the combination of our meticulous natural virgin diamond selection and superior engineering, Two Striper® burs:

- Provide uncommonly smooth surface finish.
- Eliminate the need for second pass over a crown with a finer grit diamond.
- Reduce both prep time and cost.



High magnification photo of diamond crystals on a Two Striper® instrument.

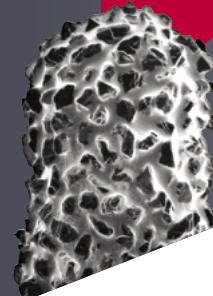


We use natural, virgin diamond crystals — which have more corners and angles than synthetics — for superior abrasion.

## NEW DIAMOND BUR TIP

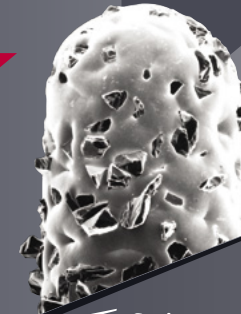
Two Striper. P.B.S.® BRAZE

Significant diamond coverage and exposure.



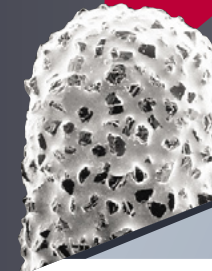
ELECTROPLATED

Minimal to no diamond coverage and exposure.



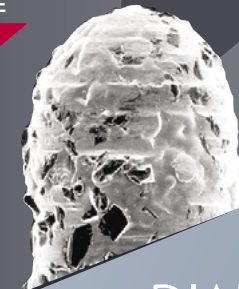
Two Striper. P.B.S.® BRAZE

Diamonds are still present. The diamonds wear smooth and do not pull out.



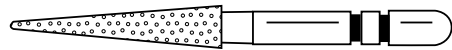
ELECTROPLATED

Diamonds have pulled out.

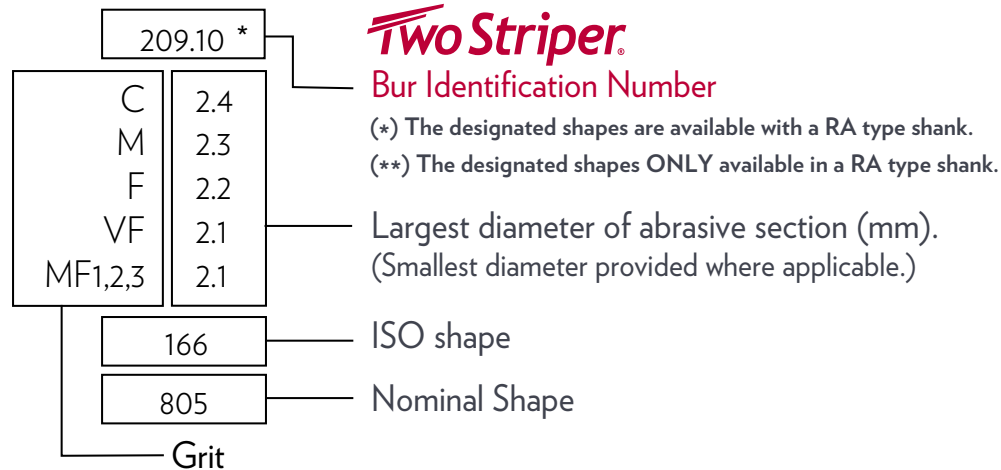


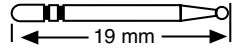
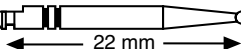
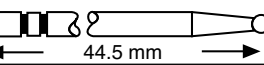
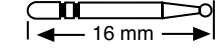
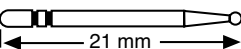
## USED DIAMOND BUR TIP

# Two Striper<sup>®</sup> DIAMOND BUR SPECIFICATIONS



Line drawing - actual size and shape of abrasive length and neck.



Bur Specifications		
Bur Type	Bur Length	ISO No.
FG	 19 mm	314
RA	 22 mm	204
HP	 44.5 mm	104
FG Shortcut	 16 mm	313
FG Long	 21 mm	315

Grit Selection			
Grit	Grit Code	Grit Size	Micron Size
Coarse	C	120 - 140	105 - 120μ
Medium	M	170 - 200	74 - 88
Fine	F	230 - 270	53 - 62
Very Fine	VF	-	45
Micro Fine 1	MF 1	-	45
Micro Fine 2	MF 2	-	20
Micro Fine 3	MF 3	-	10

■ Coarse   
 ■ Medium   
 ■ Fine   
 ■ Very Fine  
■ Micro Fine 1   
 ■ Micro Fine 2   
 ■ Micro Fine 3






# FG DIAMOND BURS




(\*) The designated shapes are available with an RA type shank.




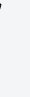


(\*\*) The designated shapes ONLY available in a RA type shank.


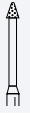





**Two Striper**

Tool Number	
C	Max. diameter (mm) of abrasive section
M	
F	
VF	
MF1, 2, 3	
ISO Shape	
Nominal Shape	

AMALGAM REMOVER				
				
<b>1210</b>	<b>1220</b>	<b>1225</b>	<b>1240</b>	<b>1250</b>
1.3	1.6	2.1	1.1	1.3
1.2	1.5	2.0	1.0	1.2
1.2	1.4	2.0	0.9	1.1
032	032	032	032	032
813	813	813	813	813



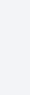
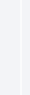
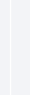
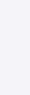


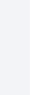
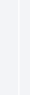
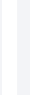
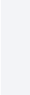
BARREL		
		
<b>230</b>	<b>234</b>	<b>240</b>
3.4	4.1	4.8
3.3	4.0	4.7
3.2	3.9	4.6
3.1	3.8	4.5
3.1	3.8	4.5
038	039	039
811	811	811



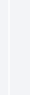

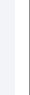

COMPOSITE FINISHER					
					
<b>TO</b>	<b>FO</b>	<b>T1</b>	<b>F1</b>	<b>T2</b>	<b>F2</b>
2.3		3.0		3.2	
	2.2		2.9		3.1
031	031	031	031	031	031
905	905	905	905	905	905

CONE						
						
<b>205.1.25</b>	<b>206.2</b>	<b>207.7</b>	<b>207.10</b>	<b>209.6</b>	<b>209.10</b>	<b>608.9</b>
	1.6	1.5	1.9	1.6	2.3	1.4
1.2	1.5	1.4	1.8	1.5	2.3	1.3
1.1	1.4	1.3	1.7	1.5	2.2	1.3
1.0	1.3	1.2	1.6	1.4	2.1	1.2
1.0	1.3	1.2	1.6	1.4	2.1	1.2
161	161	165	166	164	166	166
-	-	858	859	852	852L	859

**Two Striper**

Tool Number	
C	Max. diameter (mm) of abrasive section
M	
F	
VF	
MF1, 2, 3	
ISO Shape	
Nominal Shape	



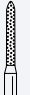


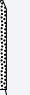
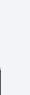
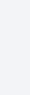
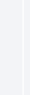
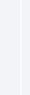
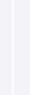
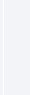
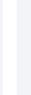
CONE, INVERTED											
											
<b>310.1</b>	<b>315.1.75</b>	<b>317.4</b>	<b>318.5</b>	<b>320.2</b>	<b>324.1</b>	<b>360.3</b>	<b>360.4</b>	<b>362.4</b>	<b>390.3</b>	<b>392.3</b>	<b>394.3</b>
1.3	1.6	1.7	1.8	1.7	2.1	1.1	1.4	1.3	1.2	1.3	1.6
1.2	1.5	1.6	1.7	1.6	2.1	1.0	1.4	1.2	1.1	1.3	1.5
1.1	1.5	1.6	1.7	1.5	2.0	1.0	1.3	1.1	1.0	1.2	1.4
1.0	1.4	1.4	1.6	1.5	1.9	0.9	1.2	1.1	0.9	1.1	1.3
1.0	1.4	1.4	1.6	1.5	1.9	0.9	1.2	1.1	0.9	1.1	1.3
225	225	226	226	225	011	226	226	226	019	019	019
805	805	807	807	805	805	805	807	807	806	806	806








CROWN CUT™					
					
<b>SC5</b>	<b>SC8</b>	<b>SC10</b>	<b>ST6</b>	<b>ST8</b>	<b>ST11</b>
1.7	1.7	1.9	1.8	1.8	1.8
511	513	515	517	519	521
-	-	-	-	-	-



**Two Striper**

Tool Number	
C	Max. diameter (mm) of abrasive section
M	
F	
VF	
MF1, 2, 3	
ISO Shape	
Nominal Shape	

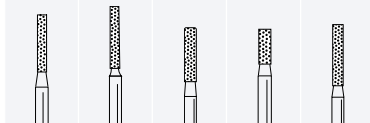
CYLINDER, BEVELED												
												
<b>244.10</b>	<b>247.9</b>	<b>248.8</b>	<b>250.8</b>	<b>250.9</b>	<b>250.11</b>	<b>251.8</b>	<b>255.8</b>	<b>259.8</b>	<b>510.6</b>	<b>510.8</b>	<b>511.8</b>	<b>511.10</b>
1.3	1.8	1.1	1.2	1.2	1.2	1.2	1.8	2.6	1.0	1.0	1.2	1.2
1.2	1.7	1.0	1.2	1.2	1.2	1.2	1.7	2.5	1.0	1.0	1.2	1.2
1.2	1.7	1.0	1.1	1.1	1.1	1.1	1.6	2.4	0.9	0.9	1.1	1.1
1.1	1.6	0.9	1.0	1.0	1.0	1.0	1.5	2.3	0.9	0.9	1.1	1.1
1.1	1.6	0.9	1.0	1.0	1.0	1.0	1.5	2.3	0.9	0.9	1.1	1.1
131	130	130	130	130	131	130	130	130	129	130	131	131
879	-	885	885	886	886	885	862	-	877	878	878	879

CYLINDER, FLAT END							
							
<b>513.4</b>	<b>513.5</b>	<b>514.3</b>	<b>514.4</b>	<b>514.5</b>	<b>514.7</b>	<b>515</b>	
1.0	1.0	1.1	1.1	1.1	1.1	1.2	
0.9	0.9	1.0	1.0	1.0	1.0	1.2	
0.8	0.8	1.0	1.0	1.0	1.0	1.1	
0.7	0.7	0.9	0.9	0.9	0.9	1.0	
0.7	0.7	0.9	0.9	0.9	0.9	1.0	
109	109	108	109	109	110	109	
835	836	835	835	836	837	836	

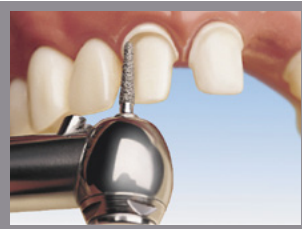
(\*) The designated shapes are available with an RA type shank. | (\*\*) The designated shapes ONLY available in a RA type shank.

**Two Striper**

**CYLINDER, FLAT END**



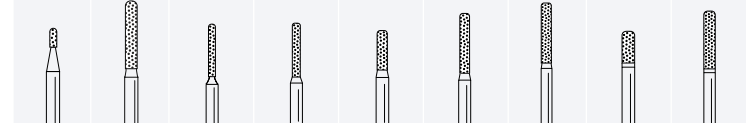
Tool Number	515.7	515.8	516.7	520.4	520.8
C	1.2	1.3	1.6	1.5	1.5
M	1.2	1.2	1.5	1.4	1.4
F	1.1	1.1	1.5	1.3	1.3
VF	1.0	1.0	1.3	1.2	1.2
MF1, 2, 3	1.0	1.0	1.3	1.2	1.2
ISO Shape	110	111	110	109	111
Nominal Shape	837	837	837	835	837



**ROUND END CYLINDER**

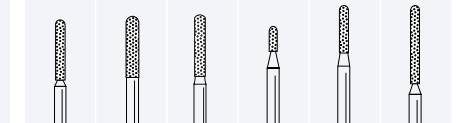
A round end cylinder can create a shoulder with a rounded internal angle. This finish line can then be beveled or chamfered.

**CYLINDER, ROUND EDGE**



Tool Number	512.1.8	551.8	574.7KS-0	575.7KS-1	585.5KS-4	585.8KS-2	586.8	587.4KS-5	587.8KS-3
C	0.8	1.6	1.0	1.2	1.4	1.4	1.5	1.8	1.8
M	0.7	1.5	0.9	1.1	1.3	1.3	1.4	1.7	1.7
F	0.6	1.5	0.8	1.0	1.2	1.2	1.3	1.7	1.7
VF	0.6	1.3	0.8	1.0	1.2	1.2	1.3	1.6	1.6
MF1, 2, 3	0.6	1.3	0.7	0.9	1.2	1.2	1.2	1.6	1.6
ISO Shape	146	146	146	146	146	146	146	146	146
Nominal Shape	835M	-	837KR	837KR	836KR	837KR	837KR	835KR	837KR

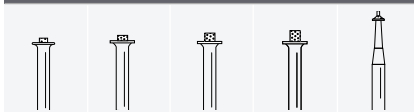
**CYLINDER, ROUND END**



Tool Number	550.8	552.8	553.8	572.3	573.6	588.10
C	1.4	1.9	1.6	1.1	1.2	1.3
M	1.3	1.8	1.5	1.0	1.1	1.2
F	1.2	1.7	1.5	0.9	1.0	1.1
VF	1.1	1.6	1.3	0.8	0.9	1.0
MF1, 2, 3	1.1	1.6	1.3	0.8	0.9	1.0
ISO Shape	141	141	141	138	140	142
Nominal Shape	881	881	881	838	880	882

**Two Striper**

**DEPTH CUTTER**



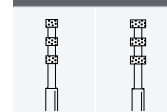
Tool Number	DC.5	DC.75	DC1.0	DC1.5	DCB.5
C	1.2	1.2	1.2	1.2	
M	1.1	1.1	1.1	1.1	
F	1.0	1.0	1.0	1.0	0.4
VF	0.9	0.9	0.9	0.9	
MF1, 2, 3					
ISO Shape	500	500	500	500	500
Nominal Shape	-	-	-	-	-



**DEPTH CUTTER**

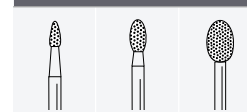
Depth cutter burs precisely reduce the enamel labial surface of the tooth. Use multiple depth cuts for optimum reduction.

**DEPTH MARKER**



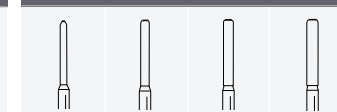
Tool Number	DC0.3	DC0.5
C		
M	1.5	2.0
F		
VF		
MF1, 2, 3		
ISO Shape	552	552
Nominal Shape	834	834

**EGG**

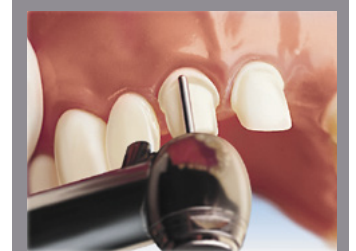


Tool Number	207.3	287.4	295.6
C	1.6	2.3	4.1
M	1.5	2.2	4.0
F	1.4	2.2	3.9
VF	1.3	2.1	3.8
MF1, 2, 3	1.3	2.1	3.8
ISO Shape	274	277	277
Nominal Shape	379	379	379

**END CUTTING TGE™**



Tool Number	TGE 1.0	TGE 1.2	TGE 1.4	TGE 1.6
C				
M	0.9	1.1	1.3	1.4
F	0.9	1.0	1.2	1.3
VF	0.8	0.9	1.1	1.3
MF1, 2, 3				
ISO Shape	150	150	150	150
Nominal Shape	10839	10839	10839	10839

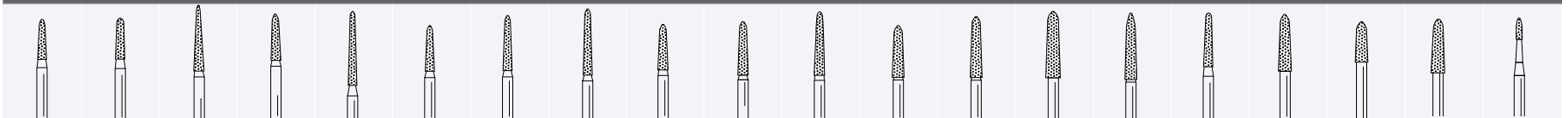


**END CUTTING TGE™ BURS**

Excellent for refining a shoulder preparation without the danger of removing additional dentin.

**Two Striper**

**FLAME**



Tool Number	242.6	243.6	245.10	246.7	249.10	252.6	252.8	252.10	253.6	253.8	253.10	254.6	254.8	254.10	255.10	256.8	257.8*	258.6	258.8	260.3
C	1.0/1.5	1.3/1.7	0.6/1.7	0.5/1.7	0.3/1.3	0.4/1.4	0.4/1.4	0.4/1.4	0.4/1.6	0.4/1.6	0.4/1.6	0.4/1.8	0.4/1.8	0.4/2.2	0.4/1.8	0.4/1.7	0.4/2.0	0.4/2.0	0.4/2.2	0.4/1.0
M	0.9/1.4	1.2/1.6	0.5/1.6	0.4/1.6	0.3/1.3	0.3/1.3	0.3/1.3	0.3/1.3	0.3/1.5	0.3/1.5	0.3/1.5	0.3/1.7	0.3/1.7	0.3/2.1	0.3/1.7	0.3/1.6	0.3/1.9	0.3/2.0	0.3/2.1	0.3/0.9
F	0.8/1.3	1.1/1.5	0.5/1.5	0.4/1.6	0.2/1.2	0.2/1.3	0.2/1.3	0.2/1.3	0.2/1.4	0.2/1.4	0.2/1.4	0.2/1.7	0.2/1.7	0.2/2.0	0.2/1.7	0.2/1.5	0.2/1.8	0.2/1.9	0.2/2.0	0.2/0.8
VF	0.8/1.2	1.0/1.4	0.4/1.4	0.3/1.4	0.1/1.1	0.2/1.2	0.2/1.2	0.2/1.2	0.2/1.3	0.2/1.3	0.2/1.3	0.2/1.6	0.2/1.6	0.2/1.9	0.2/1.6	0.2/1.5	0.2/1.8	0.2/1.8	0.2/1.9	0.2/0.7
MF1, 2, 3	0.8/1.2	1.0/1.4	0.4/1.4	0.3/1.4	0.1/1.1	0.2/1.2	0.2/1.2	0.2/1.2	0.2/1.3	0.2/1.3	0.2/1.3	0.2/1.6	0.2/1.6	0.2/1.9	0.2/1.6	0.2/1.4	0.2/1.8	0.2/1.8	0.2/1.9	0.2/0.7
ISO Shape	297	297	299	297	299	297	298	299	297	298	299	297	298	299	299	298	298	297	298	246
Nominal Shape	860	860	863	862	879	877K	878K	879K	877K	878K	879K	877K	878K	879K	863	856	856	855	856	860

**Two Striper** | FG BURS

(\*) The designated shapes are available with an RA type shank. | (\*\*) The designated shapes ONLY available in a RA type shank.

**Two Striper**

FLAME													
Tool Number	260.6.5	260.8*	260.10	261.4	261.8	262.6.5	262.8	262.10	263.8	265.6.5*	265.8	266.7.5	267.8
C	0.4/1.3	0.4/1.4	0.5/1.4	0.4/1.4	0.4/1.1	0.4/1.3	0.6/1.7	0.6/1.7	0.4/1.6	0.5/1.4	0.4/1.4	0.5/1.4	0.4/1.4
M	0.3/1.2	0.3/1.3	0.4/1.3	0.4/1.3	0.3/1.0	0.4/1.2	0.5/1.6	0.5/1.6	0.3/1.5	0.5/1.3	0.3/1.4	0.4/1.3	0.3/1.3
F	0.2/1.2	0.3/1.3	0.4/1.2	0.3/1.2	0.3/1.0	0.3/1.2	0.4/1.5	0.4/1.5	0.3/1.4	0.4/1.2	0.3/1.3	0.4/1.2	0.3/1.2
VF	0.2/1.1	0.1/1.1	0.3/1.1	0.2/1.1	0.2/0.8	0.2/1.1	0.3/1.4	0.4/1.4	0.2/1.3	0.3/1.2	0.2/1.2	0.3/1.1	0.2/1.2
MF1, 2, 3	0.2/1.1	0.1/1.1	0.3/1.1	0.2/1.1	0.2/0.8	0.2/1.1	0.3/1.4	0.4/1.4	0.2/1.3	0.3/1.2	0.2/1.2	0.3/1.1	0.2/1.2
ISO Shape	297	249	250	247	298	297	298	298	298	248	248	298	298
Nominal Shape	-	862	863	860	888	877K	878K	879K	-	860	862	-	-

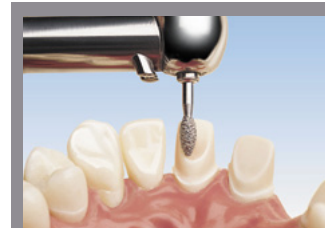


**FLAME**  
A flame shaped diamond gives a perfect chamfer finish line to a crown preparation.

FLAME				
Tool Number	270.5	270.6.5	270.9	275.9
C	0.5/1.6	0.4/1.9	0.5/1.9	0.4/2.2
M	0.5/1.5	0.3/1.8	0.4/1.8	0.4/2.2
F	0.4/1.4	0.2/1.7	0.4/1.7	0.3/2.1
VF	0.3/1.4	0.2/1.6	0.3/1.6	0.2/2.0
MF1, 2, 3	0.3/1.4	0.2/1.6	0.3/1.6	0.2/2.0
ISO Shape	247	297	298	298
Nominal Shape	860	862	863	-

**Two Striper**

FOOTBALL								
Tool Number	281.5	283.4	284.5	285.5*	286.5	290.4	291.4**	292.3*
C	2.6	2.5	2.2	2.3	2.3	1.9	1.2	1.6
M	2.5	2.4	2.2	2.2	2.3	1.8	1.1	1.5
F	2.4	2.3	2.1	2.2	2.2	1.7	1.0	1.5
VF	2.3	2.2	2.0	2.1	2.1	1.6	0.9	1.4
MF1, 2, 3	2.3	2.2	2.0	2.0	2.1	1.6	0.9	1.4
ISO Shape	243	243	243	243	243	243	243	243
Nominal Shape	368	368	368	368	368	368	889	368



**FOOTBALL**  
A football shaped diamond is used to obtain a perfect shape when lingual reduction is necessary.

GINGIVAL CURETTAGE GCP™							
Tool Number	252.SA	253.SA	254.SA	252.SB	253.SB	254.SB	257.SB
C	0.4/1.4	0.4/1.6	0.4/1.8	0.4/1.4	0.4/1.6	0.4/1.8	0.4/2.0
M	0.3/1.3	0.3/1.5	0.3/1.7	0.3/1.3	0.3/1.5	0.3/1.7	0.3/1.9
F	0.2/1.3	0.2/1.4	0.2/1.7	0.2/1.3	0.2/1.4	0.2/1.7	0.2/1.8
VF							
MF1, 2, 3							
ISO Shape	297	297	297	298	298	298	298
Nominal Shape	877K	877K	877K	878K	878K	878K	878K

**Two Striper**

GINGIVAL CURETTAGE GCP™				
Tool Number	258.SB	252.SC	253.SC	254.SC
C	0.4/2.2	0.4/1.4	0.4/1.8	0.4/2.2
M	0.3/2.1	0.3/1.3	0.3/1.7	0.3/2.1
F	0.2/2.0	0.2/1.3	0.2/1.7	0.2/2.0
VF				
MF1, 2, 3				
ISO Shape	298	299	299	299
Nominal Shape	878K	879K	879K	879K

INTERPROXIMAL TRIMMER				
Tool Number	200.3	201.3	203.5	204.3.5
C				
M	0.3/0.8	0.3/0.8		
F	0.2/0.7	0.3/0.8	0.3/1.5	0.5/ 3.4
VF	0.2/0.6	0.1/0.6	0.2/1.4	0.3/3.2
MF1, 2, 3	0.2/0.6	0.1/0.6	0.2/1.4	
ISO Shape	160	160	296	296
Nominal Shape	955	956	392	833

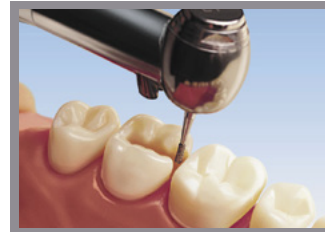
MICROPREP™						
Tool Number	MP30R	830RM	MP38	MP53A	953AM	MP89
C						0.8
M	1.2	0.9	0.7	1.3	1.4	0.7
F	1.1	0.8	0.6	1.3	1.3	0.7
VF						0.6
MF1, 2, 3						0.6
ISO Shape	237	238	138	310	103	246
Nominal Shape	830RM	830M	838M	953AM	953M	889M

OPERATIVE				
Tool Number	SIZE 1/4	SIZE 1*	SIZE 2*	SIZE 6
C	0.7	0.8	1.1	1.9
M	0.7	0.8	1.0	1.8
F	0.6	0.7	0.9	1.7
VF	0.5	0.6	0.8	1.6
MF1, 2, 3	0.5	0.6	0.8	1.6
ISO Shape	001	001	001	001
Nominal Shape	801	801	801	801

(\*) The designated shapes are available with an RA type shank. | (\*\*) The designated shapes ONLY available in a RA type shank.

**Two Striper.**

OPERATIVE								
Tool Number	SIZE 169L	SIZE 170L	SIZE 245	SIZE 330	SIZE 556	SIZE 557	SIZE 558	SIZE 701
C	1.1	1.2	1.1	1.0	1.0	1.1	1.3	1.4
M	1.0	1.1	1.0	0.9	0.9	1.0	1.2	1.3
F	0.9	1.0	0.9	0.8	0.9	1.0	1.2	1.2
VF	0.8	1.0	0.8	0.8	0.8	0.9	1.1	1.1
MF1, 2, 3	0.8	1.0	0.8	0.8	0.8	0.9	1.1	1.1
ISO Shape	170	170	238	237	169	170	170	170
Nominal Shape	-	-	830	822	835	835	835	-

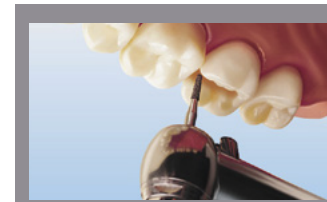


**OPERATIVE**  
Operative diamonds have many advantages over carbide burs when performing restorative dentistry.

PEAR						
Tool Number	350.2.75	351.3.75	352.4	353.4.5	360.2	361.2.5
C	1.1	1.1	1.3	1.5	1.0	1.2
M	1.0	1.0	1.2	1.4	0.9	1.1
F	0.9	0.9	1.1	1.3	0.8	1.0
VF	0.8	0.9	1.0	1.2	0.8	1.0
MF1, 2, 3	0.8	0.9	1.0	1.2	0.8	1.0
ISO Shape	237	234	236	238	237	237
Nominal Shape	830	830L	830L	830L	822	830

**Two Striper.**

PEAR					ROUND						
Tool Number	362.3*	363.4	363.5	364.5	365.4	115	120	125	130	135*	138
C	1.3	1.3	1.6	1.4	1.5	1.2	1.6	1.8	2.3	2.6	3.0
M	1.2	1.2	1.5	1.4	1.4	1.1	1.5	1.7	2.2	2.5	2.9
F	1.1	1.1	1.5	1.3	1.3	1.1	1.4	1.7	2.1	2.4	2.8
VF	1.1	1.1	1.4	1.2	1.3	1.0	1.3	1.6	2.0	2.4	2.7
MF1, 2, 3	1.1	1.1	1.4	1.2	1.3	1.0	1.3	1.6	2.0	2.4	2.7
ISO Shape	238	238	238	238	237	001	001	001	001	001	001
Nominal Shape	830R	830RL	830RL	830RL	830RL	801	801	801	801	801	801



**FLAT END TAPER**  
Ideal for inlay preparations. Undercuts are avoided and an ideal taper of less than 6° is easily established for maximum retention.

TAPER, FLAT END					
Tool Number	700.3	700.5	700.6	700.8	700.9*
C	0.5/0.9	0.6/1.1	0.7/1.2	0.6/1.8	0.6/1.4
M	0.5/0.8	0.5/1.0	0.6/1.1	0.5/1.8	0.5/1.4
F	0.4/0.8	0.5/0.9	0.5/1.0	0.5/1.7	0.5/1.3
VF	0.3/0.7	0.4/0.8	0.5/1.0	0.4/1.6	0.4/1.2
MF1, 2, 3	0.3/0.7	0.4/0.8	0.5/1.0	0.4/1.6	0.4/1.2
ISO Shape	169	170	171	172	172
Nominal Shape	845	846	846	847	848

**Two Striper.**

TAPER, FLAT END																				
Tool Number	700.11	701.5	701.7	701.9	702.8	703.8	703.9	703.10	704.9	707.4	708.3	708.4	710.3	721.6	721.8	721.10	722.6	722.8	722.10	723.4
C	0.7/1.8	0.8/1.2	1.1/1.8	0.9/1.8	0.9/1.4	1.2/1.8	1.1/1.8	1.1/1.8	1.3/1.8	1.0/1.6	1.3/2.1	1.3/2.0	1.3/1.6	0.8/1.1	0.8/1.2	0.8/1.3	1.0/1.4	1.0/1.5	1.0/1.6	1.5/2.0
M	0.6/1.8	0.7/1.2	1.0/1.8	0.8/1.8	0.9/1.4	1.1/1.8	1.0/1.8	1.0/1.8	1.2/1.7	0.9/1.5	1.3/2.0	1.3/2.0	1.3/1.5	0.7/1.0	0.7/1.1	0.7/1.2	1.0/1.3	1.0/1.4	1.0/1.5	1.4/2.0
F	0.5/1.7	0.6/1.1	0.9/1.7	0.7/1.7	0.8/1.3	1.1/1.7	1.0/1.7	0.9/1.7	1.1/1.7	0.8/1.4	1.2/2.0	1.2/1.9	1.2/1.4	0.6/1.0	0.6/1.1	0.6/1.2	0.9/1.2	0.9/1.3	0.9/1.4	1.4/1.9
VF	0.5/1.6	0.6/1.0	0.9/1.6	0.7/1.6	0.7/1.2	1.0/1.6	0.9/1.6	0.8/1.6	1.1/1.6	0.8/1.4	1.1/1.9	1.1/1.8	1.1/1.3	0.6/0.9	0.6/1.0	0.6/1.1	0.8/1.1	0.8/1.2	0.8/1.3	1.3/1.8
MF1, 2, 3	0.5/1.6	0.6/1.0	0.9/1.6	0.7/1.6	0.7/1.2	1.0/1.6	0.9/1.6	0.8/1.6	1.1/1.5	0.8/1.4	1.1/1.9	1.1/1.8	1.1/1.3	0.6/0.9	0.6/1.0	0.6/1.1	0.8/1.1	0.8/1.2	0.8/1.3	1.3/1.8
ISO Shape	173	170	171	172	172	172	172	173	172	170	169	170	169	171	172	173	171	172	173	170
Nominal Shape	848	845	846	848	847	847	848	848	-	845	-	845	-	846	847	848	846	847	848	845

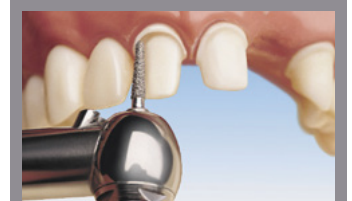
(\*) The designated shapes are available with an RA type shank. | (\*\*\*) The designated shapes ONLY available in a RA type shank.

**Two Striper**

TAPER, FLAT END										TAPER, FLAT END MODIFIED						TAPER, ROUND EDGE						
<b>Tool Number</b>	<b>723.6</b>	<b>723.8</b>	<b>723.10</b>	<b>724.6</b>	<b>724.8</b>	<b>724.10</b>	<b>725.10</b>	<b>726.10</b>	<b>727.10</b>	<b>798.10</b>	<b>702.8KR</b>	<b>703.8KR</b>	<b>708.4KR</b>	<b>712.3KR</b>	<b>722.8KR</b>	<b>723.6KR</b>	<b>747.6</b>	<b>760.8</b>	<b>760.10</b>	<b>763.8</b>	<b>763.10</b>	<b>764.8</b>
<b>C</b>	1.3/1.6	1.3/1.7	1.3/1.8	1.5/1.9	1.5/2.0	1.5/2.1	0.9/1.8	1.1/2.0	1.4/2.3	0.5/1.5	0.9/1.4	1.2/1.8	1.3/2.0	1.9/2.3	1.0/1.5	1.3/1.6	0.8/1.2	1.0/1.6	0.9/1.8	0.7/1.2	0.6/1.2	0.8/1.4
<b>M</b>	1.2/1.5	1.2/1.7	1.2/1.8	1.5/1.8	1.5/1.9	1.5/2.0	0.9/1.7	1.1/1.9	1.4/2.2	0.5/1.5	0.9/1.4	1.1/1.7	1.3/2.0	1.8/2.2	1.0/1.4	1.2/1.5	0.7/1.1	1.0/1.5	0.8/1.8	0.6/1.2	0.5/1.2	0.8/1.4
<b>F</b>	1.1/1.5	1.1/1.6	1.1/1.7	1.4/1.7	1.4/1.8	1.4/1.9	0.8/1.6	1.0/1.8	1.3/2.1	0.4/1.4	0.8/1.3	1.1/1.7	1.2/1.9	1.8/2.2	0.9/1.3	1.2/1.5	0.6/1.0	0.9/1.4	0.7/1.7	0.5/1.1	0.4/1.1	0.7/1.3
<b>VF</b>	1.1/1.4	1.1/1.5	1.1/1.6	1.3/1.7	1.3/1.8	1.3/1.9	0.7/1.5	0.9/1.7	1.2/2.0	0.3/1.3	0.7/1.2	1.0/1.6	1.1/1.8	1.6/2.0	0.8/1.2	1.0/1.3	0.5/1.0	0.8/1.3	0.6/1.6	0.5/1.0	0.3/1.0	0.6/1.2
<b>MF1, 2, 3</b>	1.1/1.4	1.1/1.5	1.1/1.6	1.3/1.7	1.3/1.8	1.3/1.9	0.7/1.5	0.9/1.7	1.2/2.0	0.3/1.3	0.7/1.2	1.0/1.6	1.1/1.8	1.6/2.0	0.8/1.2	1.0/1.3	0.5/1.0	0.8/1.3	0.6/1.6	0.5/1.0	0.3/1.0	0.6/1.2
<b>ISO Shape</b>	171	172	173	171	172	173	173	173	173	173	172	172	170	169	172	171	197	198	199	198	199	198
<b>Nominal Shape</b>	846	847	848	845	846	848	-	-	-	859	847KR	847KR	845KR	845KR	847KR	846KR	855	856	856L	878K	879K	878K

**Two Striper**

TAPER, ROUND END																		
<b>Tool Number</b>	<b>764.10</b>	<b>767.5</b>	<b>767.7</b>	<b>767.8</b>	<b>767.9*</b>	<b>769.8</b>	<b>770.5</b>	<b>770.7</b>	<b>770.8</b>	<b>770.9</b>	<b>770.10</b>	<b>772.10</b>	<b>773.8</b>	<b>776.4</b>	<b>777.8</b>	<b>778.8</b>		
<b>C</b>	0.7/1.4	1.1/1.6	1.1/1.8	1.0/1.8	0.9/1.8	1.0/1.6	1.3/1.8	1.2/1.8	1.3/1.8	1.1/1.8	1.1/1.8	1.4/2.1	0.6/1.2	2.1/2.6	0.6/1.1	0.8/1.3		
<b>M</b>	0.6/1.3	1.0/1.5	1.0/1.8	0.9/1.8	0.8/1.8	0.9/1.5	1.3/1.7	1.1/1.8	1.2/1.7	1.0/1.8	1.0/1.8	1.3/2.0	0.5/1.1	2.0/2.5	0.6/1.1	0.8/1.3		
<b>F</b>	0.6/1.2	1.0/1.5	1.0/1.8	0.9/1.8	0.7/1.8	0.8/1.5	1.2/1.7	1.1/1.7	1.2/1.7	1.0/1.7	0.9/1.7	1.2/2.0	0.5/1.0	1.9/2.4	0.5/1.0	0.8/1.3		
<b>VF</b>	0.5/1.2	0.9/1.4	0.9/1.7	0.8/1.7	0.7/1.7	0.7/1.4	1.1/1.6	1.0/1.6	1.1/1.6	0.9/1.6	0.9/1.6	1.1/1.9	0.4/0.9	1.8/2.3	0.4/0.9	0.7/1.2		
<b>MF1, 2, 3</b>	0.5/1.2	0.9/1.4	0.9/1.6	0.8/1.6	0.7/1.6	0.7/1.4	1.1/1.6	1.0/1.6	1.1/1.6	0.9/1.6	0.9/1.6	1.1/1.9	0.4/0.9	1.8/2.3	0.4/0.9	0.6/1.1		
<b>ISO Shape</b>	199	196	197	198	198	198	196	197	198	198	199	199	198	196	198	198		
<b>Nominal Shape</b>	879K	849	855	856	856L	856	849	855	856	856L	856XL	856XL	-	849	856	856		



**ROUND END TAPER**

Used to create a shoulder with a rounded internal line angle. This is the most popular finish line that can be beveled or chamfered.

**Two Striper**

TAPER, ROUND END																				
<b>Tool Number</b>	<b>779.8</b>	<b>780.4</b>	<b>780.7</b>	<b>780.8</b>	<b>780.9</b>	<b>781.6</b>	<b>781.7</b>	<b>781.8</b>	<b>781.10</b>	<b>782.6</b>	<b>782.8</b>	<b>782.10</b>	<b>783.6</b>	<b>783.8</b>	<b>783.10</b>	<b>784.6</b>	<b>784.8</b>	<b>784.10</b>	<b>785.4</b>	<b>785.7</b>
<b>C</b>	1.2/1.8	1.7/2.1	1.4/2.1	1.4/2.1	1.4/2.1	0.8/1.1	0.9/1.2	0.8/1.2	0.8/1.3	1.1/1.4	1.1/1.5	1.1/1.6	1.3/1.6	1.3/1.7	1.3/1.8	1.6/1.9	1.6/2.0	1.6/2.1	2.2/2.6	1.5/2.4
<b>M</b>	1.2/1.7	1.6/2.0	1.3/2.0	1.3/2.0	1.3/2.0	0.8/1.0	0.8/1.1	0.7/1.1	0.7/1.2	1.0/1.3	1.0/1.4	1.0/1.5	1.2/1.5	1.2/1.7	1.2/1.8	1.5/1.8	1.5/1.9	1.5/2.0	2.1/2.5	1.4/2.3
<b>F</b>	1.1/1.7	1.6/1.9	1.3/1.9	1.3/1.9	1.3/1.9	0.7/1.0	0.7/1.1	0.7/1.1	0.7/1.2	0.9/1.2	1.0/1.4	0.9/1.4	1.2/1.5	1.2/1.6	1.2/1.7	1.4/1.7	1.4/1.8	1.4/1.9	2.1/2.4	1.4/2.2
<b>VF</b>	1.0/1.6	1.5/1.9	1.2/1.9	1.2/1.9	1.2/1.9	0.7/0.9	0.6/1.0	0.6/1.0	0.6/1.1	0.8/1.1	0.8/1.2	0.8/1.3	1.1/1.4	1.1/1.5	1.1/1.6	1.4/1.7	1.4/1.8	1.4/1.9	2.0/2.3	1.3/2.1
<b>MF1, 2, 3</b>	1.0/1.5	1.5/1.8	1.2/1.8	1.2/1.9	1.2/1.8	0.6/0.9	0.6/1.0	0.6/1.0	0.6/1.1	0.8/1.1	0.8/1.2	0.8/1.3	1.1/1.4	1.1/1.5	1.1/1.6	1.4/1.7	1.4/1.8	1.4/1.9	2.0/2.3	1.3/2.1
<b>ISO Shape</b>	198	196	197	198	198	198	197	198	199	197	198	199	197	198	199	197	198	199	196	197
<b>Nominal Shape</b>	856	849	855	856	856L	-	855	856	856L	855	856	856L	855	856	856L	855	856	856L	849	855

(\*) The designated shapes are available with an RA type shank. | (\*\*) The designated shapes ONLY available in a RA type shank.

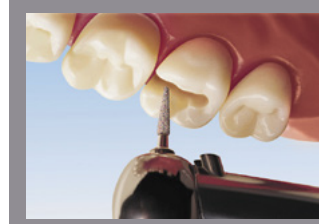
**Two Striper.**

Tool Number	Max. diameter (mm) of abrasive section
C	
M	
F	
VF	
MF1, 2, 3	

Nominal Shape

TAPER, ROUND END				
	<b>790.8</b>	<b>797.11</b>	<b>799.65</b>	<b>799.11*</b>
	2.0/2.6		0.8/1.5	0.8/1.8
	2.0/2.5	0.5/1.1	0.8/1.4	0.7/1.8
	1.9/2.4	0.5/1.1	0.7/1.3	0.6/1.7
	1.8/2.4	0.3/0.9	0.6/1.3	0.5/1.6
	1.8/2.4	0.3/0.9	0.6/1.3	0.5/1.6
ISO Shape	198	167	197	199
Nominal Shape	856	850	-	-

TAPER, SAFE END					
	<b>S79</b>	<b>SE738.8</b>	<b>SE271.5</b>	<b>SE271.7**</b>	<b>SE271.10</b>
	0.9/1.8	1.0/1.3		0.8/1.2	
	0.8/1.8	0.9/1.2	0.6/1.2		0.6/1.2
	0.7/1.7	0.8/1.1	0.6/1.1	0.7/1.0	0.6/1.1
	0.7/1.6	0.7/1.1	0.5/1.0		0.5/1.0
	219	190	217	220	218
Nominal Shape	-	-	-	-	-



**SAFE END TAPER**  
A Safe End diamond can be used to protect the tissue if the box preparation goes subgingivally.

ENDO	TRUNCATED BUD
<b>1C RA**</b>	<b>290.2</b>
0.8	1.6
	1.5
	1.5
	1.3
	1.3
001	254
801	390

**Two Striper.**

Tool Number	Max. diameter (mm) of abrasive section
C	
M	
F	
VF	
MF1, 2, 3	

Nominal Shape

TAPER, SAFE STOP			
	<b>SE259.2</b>	<b>SE259.8</b>	<b>SE740.8</b>
	1.0/1.2		
	0.9/1.1	1.6/2.1	1.5/2.1
	0.9/1.1	1.6/2.1	1.5/2.1
	0.7/0.9		
	0.7/0.9		
ISO Shape	218	289	219
Nominal Shape	-	-	-

TORPEDO				
	<b>256.9</b>	<b>264.7</b>	<b>268.8</b>	<b>268.10</b>
	1.8	1.3	1.6	1.6
	1.8	1.3	1.5	1.5
	1.7	1.2	1.5	1.5
	1.6	1.1	1.3	1.3
	1.8	1.1	1.3	1.3
ISO Shape	210	288	289	289
Nominal Shape	856	-	-	-

WHEEL					
	<b>860</b>	<b>862</b>	<b>863</b>	<b>866</b>	<b>899</b>
	3.5	4.1	4.7	5.7	7.3
	3.4	4.0	4.6	5.6	7.2
	3.3	4.0	4.5	5.6	7.1
	3.3	3.9	4.4	5.5	7.1
	068	068	068	068	051
Nominal Shape	909	909	909	909	-

## SPECIALTY DIAMOND BURS

**Two Striper. TSZtech™**

- Cutting edge technology for removal of Zirconium-based restorations.
- Unique diamond characteristics to allow for maximum strength and durability.
- Diamond clearance specifically designed to minimize clogging and provide cooler Zirconia material removal.
- The superior P.B.S.® technology enables Two Striper® TSZTech™ diamond burs to last longer and operate more efficiently.

**Two Striper.**

Tool Number	TAPER, ROUND END	TAPER, FE MODIFIED	FOOTBALL	FLAME	ROUND			CYLINDER, ROUND END	TAPER, ROUND END
	VF								
	<b>770.8Z</b>	<b>703.8KRZ</b>	<b>285.5Z</b>	<b>260.8Z</b>	<b>115Z</b>	<b>120Z</b>	<b>125Z</b>	<b>X590.12Z</b>	<b>X769.10Z</b>
	1.1/1.6	1.0/1.6	2.1	0.3/1.2	1.0	1.3	1.6	1.7	0.5/1.7
ISO Shape	198	172	243	249	001	001	001	014	199
Nominal Shape	856	847KR	368	862	801	801	801	842R	850

# Two Striper. TS2000™

## RAPID BULK REDUCTION - SMOOTH FINISH MARGIN

The spiral pattern stops short of the tip on TS2000™ burs to ensure a smooth margin.

## 50% FASTER THAN OTHER SPIRAL DESIGNS

Permanently bonded diamond along the spiral design significantly increases performance. On average, TS2000™ burs are 50% faster.

## INCREASED EFFICIENCY - MORE COOLANT

Clearance angles in the spiral design provide efficient removal of tooth debris and access for water coolant. This design restricts the amount of diamond in contact with the tooth at any given time, thus reducing frictional drag to increase cutting efficiency.



### Two Striper.

TAPER, FLAT END														
Tool Number		2000.7	2000.8	2000.9	2000.10	2001.7	2001.8	2001.9	2001.10	2002.7	2002.8	2002.9	2002.10	
C	Max. diameter (mm) of abrasive section	0.9/1.4	0.9/1.4	0.9/1.4	0.9/1.4	1.1/1.6	1.1/1.6	1.1/1.6	1.1/1.6	1.3/1.8	1.3/1.8	1.3/1.8	1.3/1.8	
M														
F														
VF														
MF1, 2, 3														
ISO Shape		171	172	172	173	171	172	172	173	171	172	172	173	
Nominal Shape		846T	847T	848T	848T	847T	847T	848T	848T	847T	847T	848T	848T	

### Two Striper.

TAPER, ROUND END													
Tool Number		2003.7	2003.8	2003.9	2003.10	2004.7	2004.8	2004.9	2004.10	2005.7	2005.8	2005.9	2005.10
C	Max. diameter (mm) of abrasive section	0.9/1.4	0.9/1.4	0.9/1.4	0.9/1.4	1.1/1.6	1.1/1.6	1.1/1.6	1.1/1.6	1.3/1.8	1.3/1.8	1.3/1.8	1.3/1.8
M													
F													
VF													
MF1, 2, 3													
ISO Shape		197	198	198	199	197	198	198	199	197	197	198	199
Nominal Shape		855T	856T	856T	856LT	855T	856T	856T	856LT	855T	856T	856T	856LT

### Two Striper.

GINGIVAL CURETTAGE													
Tool Number		2006.7GC	2006.8GC	2006.9GC	2006.10GC	2007.7GC	2007.8GC	2007.9GC	2007.10GC	2008.7GC	2008.8GC	2008.9GC	2008.10GC
C	Max. diameter (mm) of abrasive section	0.9/1.4	0.9/1.4	0.9/1.4	0.9/1.4	1.1/1.6	1.1/1.6	1.1/1.6	1.1/1.6	1.3/1.8	1.3/1.8	1.3/1.8	1.3/1.8
M													
F													
VF													
MF1, 2, 3													
ISO Shape		297	298	298	299	297	298	298	299	297	298	298	299
Nominal Shape		877KT	878KT	-	879KT	877KT	878KT	-	879KT	877KT	878KT	-	879KT

(\*) The designated shapes are available with an RA type shank. | (\*\*) The designated shapes ONLY available in a RA type shank.

**Two Striper**

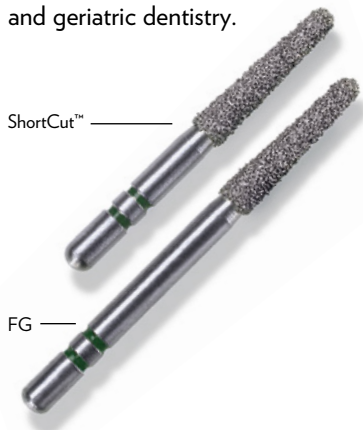
FLAME												CYLINDER, FLAT END			SPECIAL				TAPER, KR			
<b>Tool Number</b>	2009.7	2009.8	2009.9	2009.10	2010.7	2010.8	2010.9	2010.10	2011.7	2011.8	2011.9	2011.10	2013.7	2013.8	2013.10	2014.5	2015.4	2016.8	2016.10	2001.8KR	2002.8KR	2013.8KR
C	1.4	1.4	1.4	1.4	1.6	1.6	1.6	1.6	1.8	1.8	1.8	1.8	1.5	1.5	1.5	2.3	3.4	1.4	1.8	1.0/1.6	1.8	1.0/1.5
M																						
F																						
VF																						
MF1, 2, 3																						
ISO Shape	197	198	198	199	197	198	198	199	197	198	198	199	110	111	112	243	38	13	131	172	172	110
Nominal Shape	862T	862T	863T	863T	862T	862T	863T	863T	862T	862T	863T	863T	836T	837T	837LT	379T	811T	885T	886T	847KRT	847KRT	847KRT

**Two Striper**  
**ShortCut™**

**Two Striper**

Tool Number		AMALGAM REMOVER		COMPOSITE FINISHER		CYLINDER			FOOTBALL	MICRO-PREP™	TAPER, FLAT END		TAPER, RND END			FLAME		INTER-PROX
C		S1250	ST1	SF1	S250.8	S515.7	S575.7	S285.5	SMP89	S2001.8	S703.8KR	S782.8	S2004.9	S2005.8	S260.8	S261.8	S201.3	
M		1.2	3.0		1.2	1.2	1.2	2.3	0.7	1.1/1.6	1.2/1.8	1.1/1.5	1.1/1.6	1.3/1.8	0.4/1.4	0.4/1.1		
F															0.3/1.2		0.2/0.7	
VF				2.9														
MF1, 2, 3																		
ISO Shape		032	031	031	130	110	146	243	246	172	197	198	198	197	249	298	160	
Nominal Shape		813	905	905	885	837	837KR	368	889M	847T	847KR	856	856T	856T	862	888	956	

- The short shank provides easier access in the posterior regions of the mouth.
- Available in over twenty popular shapes, including operative and crown and bridge.
- ShortCut™ diamond burs meet the challenges of pediatric and geriatric dentistry.



**Two Striper**

Tool Number		OPERATIVE							TAPER, FLAT END		TAPER, ROUND END			GINGIVAL CURETTAGE			
C		SSIZE2	SSIZE6	SSIZE169	SSIZE245	SSIZE330	SSIZE556	SSIZE557	SSIZE701	S702.8	S703.8	S767.8	S770.8	S780.9	S252SB	S253SB	S254SB
M		1.0	1.8	1.0	1.0	0.9	0.9	1.0	1.3	0.9/1.4	1.2/1.8	1.0/1.8	1.3/1.8	1.4/2.1	0.3/1.3	0.3/1.5	0.3/1.7
F																	
VF																	
MF1, 2, 3																	
ISO Shape		001	001	170	238	237	169	170	170	172	172	198	198	198	298	298	298
Nominal Shape		801	801	-	830	822	835	835	-	847	847	856	856	856L	878K	878K	878K

**Two Striper** | TS2000™ - SHORTCUT™

# DENTAL LABORATORY DIAMOND BURS

**Two Striper**

Tool Number	
C	Max. diameter (mm) of abrasive section
M	
F	
VF	
MF1, 2, 3	
ISO Shape	

Nominal Shape

CONE, INVERTED								CYLINDER, FLAT END			CYLINDER, ROUND END				FLAME			
<b>X318.2</b>	<b>X321.1</b>	<b>X324.1</b>	<b>X328.1</b>	<b>X336.2</b>	<b>X338.2</b>	<b>X340.2</b>	<b>X350.4</b>	<b>X520.4</b>	<b>X535.7</b>	<b>X580.6</b>	<b>X555.7.5</b>	<b>X575.7</b>	<b>X589.7</b>	<b>X590.12</b>	<b>X260.4</b>	<b>X261.5</b>	<b>X265.10</b>	<b>X267.10</b>
1.7	2.0	2.2	2.5	1.3	1.5	1.7	3.1	1.5	2.7	5.2	2.4	2.5	1.8	1.9	1.1	1.3	1.4	1.7
1.6	1.9	2.1	2.4	1.2	1.4	1.6	3.0	1.4	2.6	5.2	2.3	2.5	1.7	1.9	1.0	1.3	1.3	1.7
1.6	1.9	2.1	2.4	1.2	1.4	1.6	3.0	1.3	2.6	5.2	2.2	2.4	1.6	1.8	1.0	1.2	1.3	1.6
011	014	013	014	011	011	012	225	109	110	110	011	014	013	014	247	247	250	250
-	805A	805A	805A	805	-	805	-	835	836	836	880	880	880	842R	860	860	863	863

**Two Striper**

Tool Number	
C	Max. diameter (mm) of abrasive section
M	
F	
VF	
MF1, 2, 3	
ISO Shape	

Nominal Shape

FLAME		ROUND					TAPER, FLAT END					TAPER, ROUND END									
<b>X285.8.5</b>	<b>X285.8.5</b>	<b>X115</b>	<b>X118</b>	<b>X120</b>	<b>X135</b>	<b>X150</b>	<b>X701.7</b>	<b>X701.9</b>	<b>X702.10</b>	<b>X703.12</b>	<b>X709.9</b>	<b>X767.7</b>	<b>X768.4</b>	<b>X769.10</b>	<b>X770.7</b>	<b>X771.10</b>	<b>X772.10</b>	<b>X775.10</b>	<b>X776.9</b>		
1.7	2.7	1.0	1.7	1.6	2.6	3.7	1.0	1.7	1.6	2.6	3.7	1.9	1.2	1.9	1.8	1.6	2.5	1.7	4.0		
1.6	2.6	1.0	1.6	1.5	2.5	3.6	1.0	1.6	1.5	2.5	3.6	1.8	1.1	1.8	1.7	1.5	2.4	1.6	3.9		
1.6	2.6	.09	1.6	1.4	2.4	3.6	.09	1.6	1.4	2.4	3.6	1.8	1.1	1.8	1.7	1.5	2.4	1.6	3.9		
249	249	001	001	001	001	001	171	172	173	174	172	197	196	199	197	199	199	199	198		
862	-	801	801	801	801	801	847	-	848	-	847	-	849	850	855	850	850	850	856		

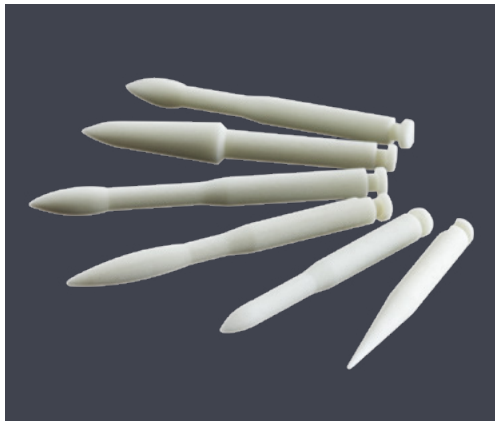
**Two Striper**

Tool Number	
C	Max. diameter (mm) of abrasive section
M	
F	
VF	
MF1, 2, 3	
ISO Shape	

Nominal Shape

WHEEL					
<b>X862</b>	<b>X868</b>	<b>X881</b>	<b>X882</b>	<b>X884</b>	<b>X889</b>
4.0	6.5	1.9	2.6	4.6	6.7
3.9	6.4	1.8	2.5	4.5	6.6
3.9	6.3	1.8	2.5	4.5	6.6
067	068	303	303	304	303
909	909	-	-	-	-

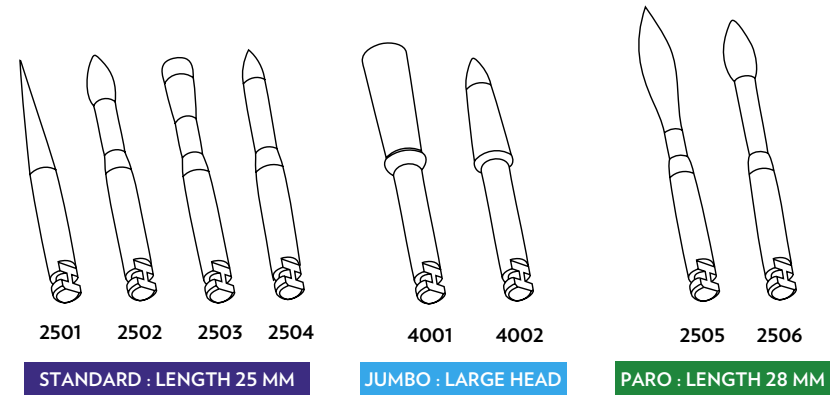
# ACCESSORIES



## *Two Striper* Stainbuster®

The innovative composite bur made of zircon-rich glass fiber features permanent abrasive power for minimal invasive dentistry, removing cement and stains from tooth surface with no damage to enamel, ceramics or soft tissues.

### AVAILABLE SHAPES



**DAILY PRACTICE** Stain removal, cement or composite surplus grinding, temporary cement removal, light maintenance scaling

**ORTHODONTICS** Elimination of adhesive cement remnants after bracket removal

**PERIODONTICS** Scaling, root surfacing, easy access to furcation

**IMPLANTOLOGY** Sealing cement surplus removal even in narrow and difficult-to-reach places

Two Striper® Stainbuster® Assorted Pack (6 Burs)			
2540	ONE OF EACH: 2501, 2502, 2504, 2505, 2506, 4002		
Two Striper® Stainbuster® Individual Packs (6 Burs)			
2501	2503	4001	2505
2502	2504	4002	2506



Effective root planing and surfacing



Easy calculus removal



Gentle and efficient implant cleaning

# ACCESSORIES



## *Two Striper.* Carbopost®

Two Striper® Carbopost® is a fiber reinforced composite post that's as strong as metal, which reduces shear stress.

Made of 60% T700 carbon fibers and 40% epoxy resin.

- Autoclavable up to 132°C / 269.6°F
- Bio-compatible and corrosion free
- Anatomical shape and 5 different diameters (0.8mm – 1.6mm)



Mechanical Properties	
	Two Striper® Carbopost®
Elastic Modulus	141GPa
Shear Strength	23.9 MPa

### Two Striper® Carbopost® Kits

C801001	Basic Kit : 50 assorted posts (1.0, 1.2, 1.4, 1.6) and 4 matching finishing drills
C801002	Intro Kit: 20 assorted posts (1.0, 1.2, 1.4, 1.6) and 4 matching finishing drills

### Two Striper® Carbopost® Refills

10 Posts/Pack		10 posts/pack with matching finishing drill	
C802013	Ø 0.8		
C802001	Ø 1.0	C802006	Ø 1.0
C802002	Ø 1.2	C802007	Ø 1.2
C802003	Ø 1.4	C802008	Ø 1.4
C802004	Ø 1.6	C802009	Ø 1.6

# ACCESSORIES



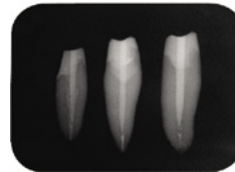
**Two Striper**

## Snowpost<sup>®</sup> & Snowlight<sup>®</sup>

Two Striper<sup>®</sup> Snowpost<sup>®</sup> & Snowlight<sup>®</sup> posts are elastic modulus with flexural strength close to dentin.

Made of zircon-rich glass fiber embedded in a resin matrix.

- Superior fatigue resistance
- Radiopaque and light transmitting
- Autoclavable up to 132°C / 269.6°F
- Bio-compatible and corrosion free
- Anatomical shape and 5\* different diameters (0.8mm\* - 1.6mm) \*Two Striper<sup>®</sup> Snowlight<sup>®</sup> posts only



Mechanical Properties		
	Two Striper <sup>®</sup> Snowpost <sup>®</sup>	Two Striper <sup>®</sup> Snowlight <sup>®</sup>
Elastic Modulus	45 GPa	52 GPa
Shear Strength	38 MPa	64 MPa

Two Striper <sup>®</sup> Snowpost <sup>®</sup> Kits			
C810001	Basic Kit : 50 assorted posts (1.0, 1.2, 1.4, 1.6) and 4 matching finishing drills		
C810002	Intro Kit: 20 assorted posts (1.0, 1.2, 1.4, 1.6) and 4 matching finishing drills		
Two Striper <sup>®</sup> Snowpost <sup>®</sup> Refills			
	10 Posts/Pack	10 posts/pack with matching finishing drill	
C811001	Ø 1.0	C811005	Ø 1.0
C811002	Ø 1.2	C811006	Ø 1.2
C811003	Ø 1.4	C811007	Ø 1.4
C811004	Ø 1.6	C811008	Ø 1.6

Two Striper <sup>®</sup> Snowlight <sup>®</sup> Kits			
C830001	Basic Kit : 50 assorted posts (1.0, 1.2, 1.4, 1.6) and 4 matching finishing drills		
C830002	Intro Kit: 20 assorted posts (1.0, 1.2, 1.4, 1.6) and 4 matching finishing drills		
Two Striper <sup>®</sup> Snowlight <sup>®</sup> Refills			
	10 Posts/Pack	10 posts/pack with matching finishing drill	
C831019	Ø 0.8		
C831001	Ø 1.0	C831006	Ø 1.0
C831002	Ø 1.2	C831007	Ø 1.2
C831003	Ø 1.4	C831008	Ø 1.4
C831004	Ø 1.6	C831009	Ø 1.6

# ACCESSORIES



**Two Striper.**

## Compo-Disc®

HAND-HELD DIAMOND FINISHING INSTRUMENT

Use Two Striper® Compo-Disc® diamond discs to open proximal contacts and for contouring. Diamond Finishing Strips are ideal for smoothing and finishing all proximal restorations and veneer margins.

**Two Striper.**

## Compo-Disc® ORDER NUMBER: CECSTFTP106

- Thin
- Edge and face-cutting
- Single-sided
- Patented holder design

**Two Striper.**

## Diamond Finishing Strips

HAND-HELD DIAMOND FINISHING INSTRUMENT

**Two Striper.**

### Diamond Finishing Strips

ASSORTED PACK  
ORDER NUMBER: CEC50087

- No diamond stripping or peeling
- Color Coded
- Flexible
- Safe-sided
- Sterilizable



**Two Striper.**

### Diamond Finishing Strips 200T2

ASSORTED PACK  
ORDER NUMBER: CERPOT3P200

For Orthodontic Reproximation

Use the Diamond Finishing Strips 200T2 for interproximal enamel reduction.

- Flexible, double sided
- 60 micron diamond
- Safe center
- Fast and smooth cutting
- Sterilizable
- Ultrasonic compatible

ORDER NUMBER	WIDTHS	THINNESS	COLOR	GRIT
100T	2.5 MM (0.10 IN)	0.15 MM (0.006 IN)	BLUE	60µ
150T	3.75 MM (0.15 IN)	0.15 MM (0.006 IN)	BLUE	60µ
100F	2.5 MM (0.10 IN)	0.127 MM (0.005 IN)	RED	45µ
150F	3.75 MM (0.15 IN)	0.127 MM (0.005 IN)	RED	45µ
100UF	2.5 MM (0.10 IN)	0.1 MM (0.004 IN)	YELLOW	20µ
150UF	3.75 MM (0.15 IN)	0.1 MM (0.004 IN)	YELLOW	20µ

Two Striper® Compo-Disc® - Package of 2 discs

Two Striper® Diamond Finishing Strips - Package of 6 or 12 Assorted Strips  
(Also available in individual packages of 6 or 12 for each strip)

Two Striper® Diamond Finishing Strips 200T2 - Package of 3

# ACCESSORIES



## Two Striper Luminescence®

EASY TO USE - FOR ALL RESTORATIVE MATERIALS

Two Striper® Luminescence® is easy to use. Unique felt tip applicators will not damage soft gingival tissue. You have complete access to multiple surfaces without generating heat.



## Two Striper Luminescence® Plus

SUPERIOR POLISH, ALL SURFACES, IN HALF THE TIME

Two Striper® Luminescence® Plus diamond polishing gel has a one step action and contains a topical desensitizer. For composites, porcelains, glass ionomers, amalgam, precious metals and tooth enamel.





Product	ORDER NUMBER
Two Striper® Luminescence® Intro Kit (3g syringe of Luminescence® gel, 2 RA Mandrels, 50 applicators)	CFMPSKT0002
Two Striper® Luminescence® Gel 3G	CFMPSSG3005
RA Mandrels (2 pcs)	CFMPSSG1008
Two Striper® Luminescence® Applicators (50)	CFMPSSG1009
Two Striper® Luminescence® Plus Gel 3G	CFMPSSG5005

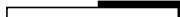

# ACCESSORIES



## Single Sided

-  X926-7 (.10mm)  
(45 micron)
-  X928-7 (.24mm)  
(60 micron)

## Double Sided

-  X927-7 (.15mm)  
(45 micron)
-  X929-7 (.28mm)  
(50 micron)

Outside Diameter = 22.2mm (7/8 in.)  
Center Hole Diameter = 1.6mm (1/16 in.)

**Two Striper.**

## Thin-Flex®

FLEXIBLE DIAMOND DISCS  
WITH TRUE EDGE CUTTING

Designed for carving ceramic and composite materials. Two Striper® Thin-Flex® discs are excellent for contouring and shaping all surfaces including embrasures. These discs have diamond crystals wrapped around the edge of the disc to avoid “black marks” during carving procedures.

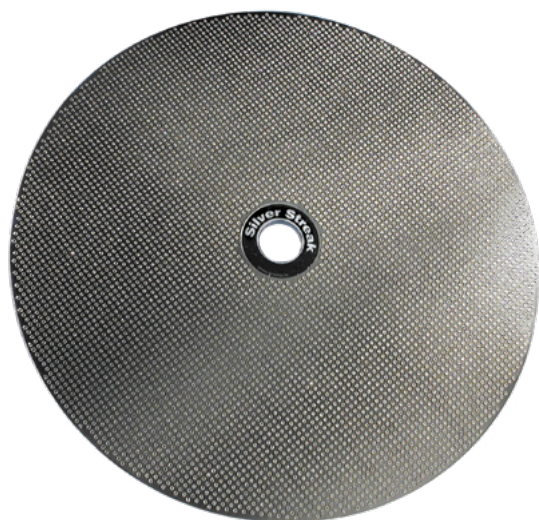
Discs may be ordered individually or in twin-packs. Twin-packs include two discs and a mandrel. The heavy duty stainless steel HP lab mandrels feature an enlarged neck area for safer operation. The screw head and washer system guarantees true running and reduces metal fatigue.

Single-Sided 1/PKG	ORDER NUMBER
926-7 (0.10mm, 45µ)	CELBTFSG633
928-7 (0.24mm, 60µ)	CELBTFSG637

Single-Sided 2/PKG (includes mandrel)	ORDER NUMBER
926-7 (0.10mm, 45µ)	CELBTFTP634
928-7 (0.24mm, 60µ)	CELBTFTP638

Double-Sided 1/PKG	ORDER NUMBER
927-7 (0.15mm, 45µ)	CELBTFSG653
929-7 (0.28mm, 60µ)	CELBTFSG657

Double-Sided 2/PKG (includes mandrel)	ORDER NUMBER
927-7 (0.15mm, 45µ)	CELBTFTP654
929-7 (0.28mm, 60µ)	CELBTFTP658



**Two Striper.**

## Silverstreak™

DIAMOND MODEL TRIMMING WHEEL

Two Striper® Silverstreak™ model trimming wheel trims models faster, runs quieter and is substantially longer lasting than traditional wheels. It has an extra coarse diamond cutting surface which is patterned for aggressive, yet cool cutting. It is lightweight, durable and perfectly balanced for concentric operation.

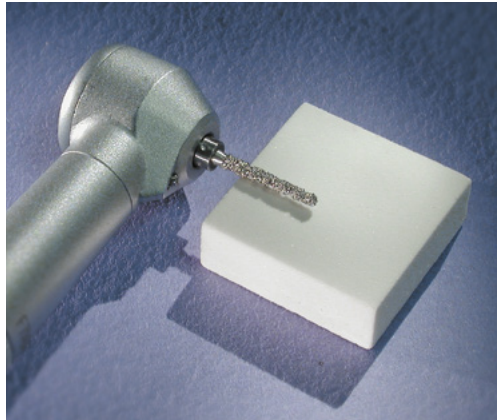
The model trimming wheel has a 25.4mm (1 in.) mounting hole and 6.4mm (1/4 in.) thickness to fit most trimmers. Available in 12” Extra Coarse (12XC) and 10” Extra Coarse (10XC).

Ask your dealer about the availability of Two Striper® Silverstreak™ model trimming wheels designed to fit other popular model trimming machines.

Product	ORDER NUMBER
12” Extra Coarse	CFWHLOC3002
10” Extra Coarse	CFWHLOC2001

# ACCESSORIES

## DRESSING STONES FOR P.B.S.® DIAMOND BURS



### *Two Striper.* Mini-Square™

Use chairside. 12 squares per pack.

ORDER NUMBER: CFMSDSD4002



### *Two Striper.* Clean--Diamond®

One large stone per pack.

ORDER NUMBER: CFMSDSD1001

These dressing stones are ideal for use with Two Striper® diamond burs and other quality diamond burs. The stones help keep Two Striper® burs at peak operating efficiency and extend their useful working life.

These dressing stones are autoclavable.

# *Two Striper.*

FOR EXPERT ASSISTANCE TO BECOME A DISTRIBUTOR OR OTHER QUESTIONS, CONTACT US.

[WWW.TWOSTRIPER.COM](http://WWW.TWOSTRIPER.COM)

*Two Striper*<sup>®</sup>

[www.twostriper.com](http://www.twostriper.com)



© Abrasive Technology 2021 REV 1.2021