

# SafeSend

One Solution. Two Deployment Options.  
Built to Prevent Human Error in Outbound Email.

VIPRE SafeSend is an email security solution that prevents data loss caused by human error in outbound communication. It protects businesses from one of the most common causes of security incidents: well-intentioned employees accidentally sending sensitive information to the wrong recipient or exposing data unintentionally.

SafeSend introduces a real-time checkpoint at the moment of send, giving users a simple opportunity to pause, review, and confirm before the email leaves the organization.

SafeSend is delivered as two deployment options: Cloud and Self-Hosted, enabling organizations to choose the model that best fits their infrastructure, compliance, and operational needs.

## Challenges

### The Problem: Human Error in Email

Most email security tools focus on blocking threats or enforcing policies after conditions are met. But many real-world data breaches are not caused by attackers.

They are caused by everyday mistakes:

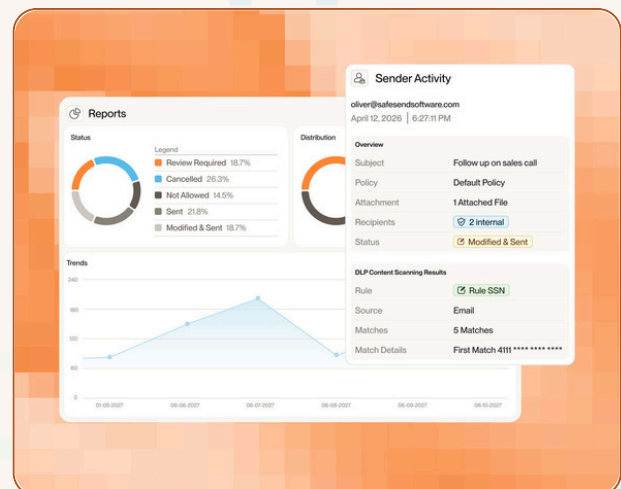
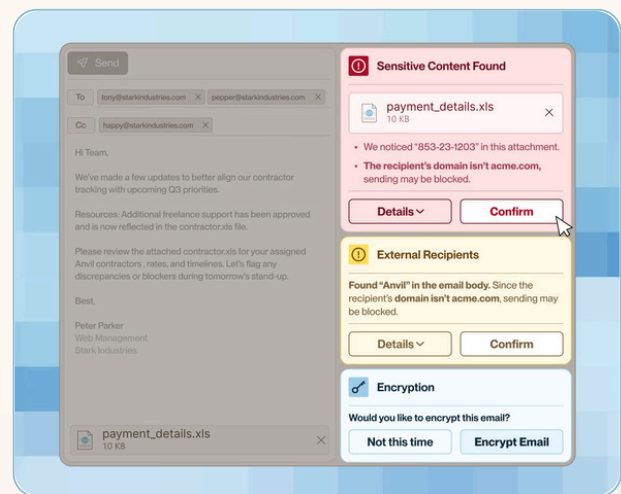
- Email sent to wrong email addresses owing to autocomplete mistakes
- Sending sensitive information to the wrong party
- Incorrect files attached to emails
- Reply-all mistakes that expose sensitive information
- Unintentional release of regulated or private information

These problems can lead to:

- Regulatory compliance violations
- Exposure to legal action and fines
- Decreased customer confidence
- Operational interruptions

Traditional data loss prevention (DLP) and email security tools often detect these issues too late, after the mistake has already happened.

SafeSend closes that gap.



# The SafeSend Approach

SafeSend introduces a pre-send security layer directly inside Microsoft Outlook. When a potential risk is detected, SafeSend prompts the user to confirm their action before sending. This creates a behavioral shift from automatic sending to conscious verification.

It is not designed to hinder efficiency, but to ensure that preventable mistakes do not turn into security breaches.

SafeSend helps users:

- Verify external recipients before sending
- Confirm attachments before sending
- Avoid problems with autocompletion and Reply All
- Be mindful of sensitive information exiting the company

## Key Capability: Pre-Send Control

SafeSend intervenes at the moment of action by:

- Highlighting external recipients
- Detecting potentially risky sending behavior
- Requiring confirmation before emails are sent externally
- Supporting attachment verification workflows

This ensures users are aware of risks before data leaves the organization, not after.

## Key Use Cases

SafeSend helps organizations:

- Stop client data being sent to the wrong recipient
- Detect sensitive information within email bodies and attachments
- Enforce domain-level sending restrictions
- Prevent accidental exposure of regulated data
- Improve compliance with internal and external policies

## Built-In Data Loss Prevention (DLP)

SafeSend includes integrated DLP capabilities that allow companies to detect sensitive information in outgoing emails and attachments.

With SafeSend, businesses can:

- Scan email content and attachments for sensitive data
- Detect structured information such as PII, financial data, or credentials
- Use regular expressions to build custom detection rules
- Identify keywords such as client names or project data
- Enforce policy on password-protected or encrypted files
- Trigger actions based on risk level


## DLP Action Options

When a DLP rule is triggered, organizations can define how SafeSend responds:

- Inform: Notify the user without requiring any response
- Confirm: User needs to confirm the warning message
- Type Confirm: User needs to type "CONFIRM" to proceed further
- Deny: Completely prevent transmission

These options help businesses customize their security policies according to their preferences.

# Deployment Options



## SafeSend Cloud

A VIPRE-hosted SaaS deployment.


---

**Designed for:**

- ✔ Rapid deployment and scalability
- ✔ MSP environments and multi-tenant management
- ✔ Limited IT overhead
- ✔ Continuous updates and feature delivery

**Key benefits:**

- ✔ Quick rollout across Microsoft 365 environments
- ✔ No infrastructure management needed
- ✔ Automatic updates and enhancements
- ✔ Perfect for cloud-first businesses



## SafeSend Self-Hosted

A customer-managed deployment for businesses requiring full control.

---



**Designed for:**

- ✔ Regulatory and compliance-driven environments
- ✔ Data sovereignty requirements
- ✔ Restricted or high-security infrastructure

**Key benefits:**

- ✔ Full control over data and deployment environment
- ✔ Supports strict governance and compliance requirements
- ✔ Suitable for enterprise and public sector environments
- ✔ Same core SafeSend protection as Cloud

## Comparison Table

Aspect	 SafeSend Cloud	 SafeSend Self-Hosted
<b>Management</b>	VIPRE-managed	Customer on-premises
<b>Best For</b>	Cloud-first, MSPs, low IT burden	Data sovereignty, regulated sectors
<b>Benefits</b>	Fast setup, auto-updates, AI future	Control, compliance
<b>Core Protection</b>	Identical (misaddressing, DLP)	Identical (misaddressing, DLP)

## Works With Microsoft, Not Against It

Designed to complement the **Microsoft 365 security stack**, SafeSend integrates with **Microsoft Entra** and native admin consoles. It doesn't replace your current Microsoft investment; it augments it with a critical human-layer security checkpoint.

### Where Microsoft typically:

- Enforces policies and rules
- Blocks based on predefined conditions
- Reacts after risk is detected

### SafeSend:

- Acts prior to sending the email
- Prevents mistakes by human users
- Adds a layer of real-time behavioral safety

Combined, they offer comprehensive protection through policy enforcement plus human error prevention.

## Why SafeSend

SafeSend addresses the human error gap in email security.

It recognizes a simple truth: Most data loss is not malicious; it is accidental.

Instead of punishing users or relying on post-event detection, SafeSend supports users with a real-time safety checkpoint at the moment of action.

Book a demo 

**See how SafeSend prevents human error before it becomes a security incident.**



### North America

[sales@vipre.com](mailto:sales@vipre.com)

+1 855 885 5566

### UK and other regions

[uksales@vipre.com](mailto:uksales@vipre.com)

+44 (0) 800 093 2580

### DACH Sales

[dach.sales@vipre.com](mailto:dach.sales@vipre.com)

+49 30 2295 7786

### Nordics Sales

[nordic.sales@vipre.com](mailto:nordic.sales@vipre.com)

+45 7025 2223