



**Nourishing Lives.
Building Tomorrow.**



Our Mission

For over 40 years, the Wichita Falls Area Food Bank has been dedicated to addressing hunger across North Texas and remains a responsible steward of donated funds and community trust. Looking into the future, the Food Bank is prepared for a new facility and is launching a capital campaign to increase capacity to better serve the needs of our neighbors. This new Distribution and Education Center will approximately triple the storage capacity with the ability to provide on-site educational programs, teaching individuals skills to make health-promoting and budget-friendly meals. Our collaboration with community partners to distribute food, with an emphasis on fresh produce, allows us to extend our reach to support the health and well-being of our neighbors across 12 counties.

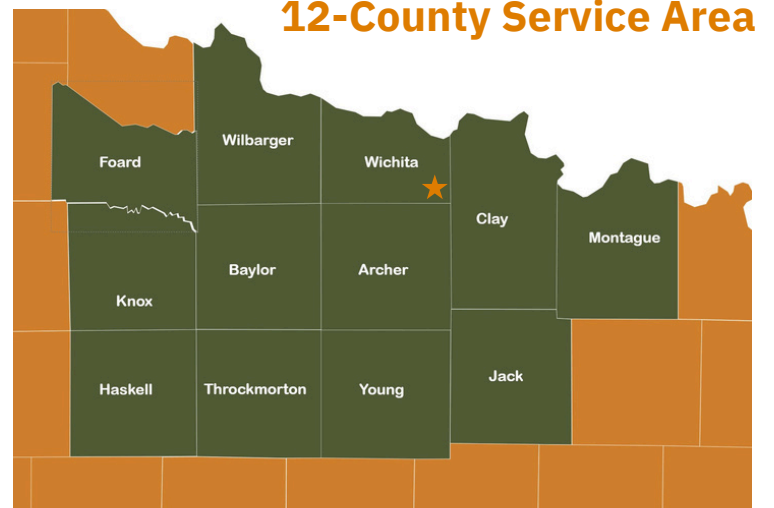
Who We Serve

The Wichita Falls Area Food Bank nourishes and educates our neighbors across 12 counties in North Texas.

41,750 children, adults, and seniors experience hunger.

- **1 in 4 children**
- **1 in 5 adults and seniors**

Through a robust network of over 90 community partners, food is distributed to neighbors in need. With only 5 counties having traditional supermarkets, our rural counties face unique challenges.



How We Serve

The Wichita Falls Area Food Bank impacts the area with 200 programs addressing hunger.

- Community Partner Network
- Kids' Café
- Nutrition Education
- Mobile Teaching Kitchen
- PowerPak4Kids
- Mobile Food Pantry
- Produce Express
- GoodBuy! Hunger
- Farmers Market Nutrition Programs
- Social Services

2024 YEAR-END RESULTS

- 5,113,796 total pounds distributed
 - 1,302,039 pounds of food-industry donations
 - 1,006,153 pounds of produce distributed
 - 81,017 Kids' Café meals served
 - 56,087 PowerPak4Kids bags distributed
- Mobile Food Pantry
 - 1,541 families served each month on average
 - 1,095 health screenings provided by United Regional Health Care System
- 133 Nutrition Education classes and events
- 684 neighbors assisted with Social Services



This impact is made possible with 2,667 volunteers providing 11,720.59 hours of volunteer time, equating to \$380,550.99 in cost-saving contributions.*

*IRS Data

The Need

Out of 198 Feeding America Food Banks nationwide, our 12-county service area has the 15th highest hunger rate.*

- 41,750 neighbors are experiencing hunger in our 12-county area.
 - 12,930 children
 - 28,820 adults and seniors

Only 5 of our 12 rural counties served have traditional supermarkets, limiting access to fresh produce and proteins. As the distributor for our community partners in those rural areas, our organization provides routine access to fresh foods that local retailers cannot sufficiently provide.

“We’ve had too many patients that have to make a choice between buying food or buying medications.”

- Phyllis Cowling
Former United Regional CEO



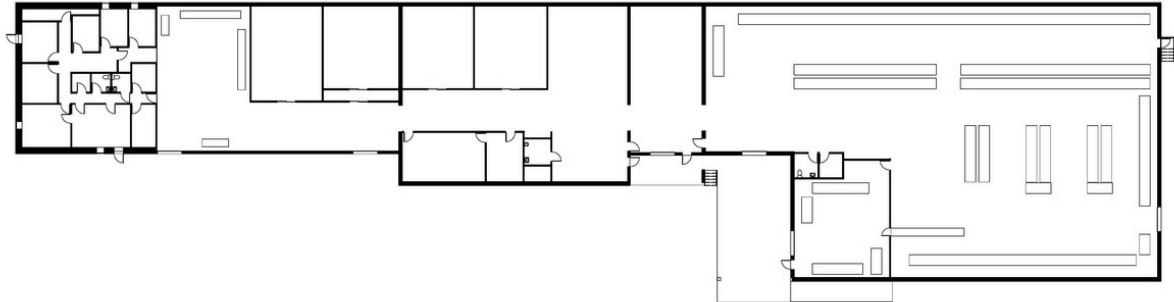
Enhancing health outcomes by utilizing food as medicine is crucial. Access to nutritious, fresh food promotes personal well-being so that individuals have the opportunity to lead healthier lives, contributing to a thriving community.

Current Space Limitations

Our current facility is at maximum capacity and only allows us to serve an estimated two-thirds of our 41,750 neighbors experiencing hunger.

- Restricted variety, quality, and quantity of food
- Limited operational efficiencies and purchasing power
- Insufficient cooler and freezer capacity, impacting the amount of fresh food that can be stored
- Confined to small group and individual volunteer opportunities
- Lack of emergency food and water storage space for disaster relief
- No space for an on-site teaching kitchen or classroom

Existing Facility



SCALE: 1"=20'-0"
0 10 25 50 100

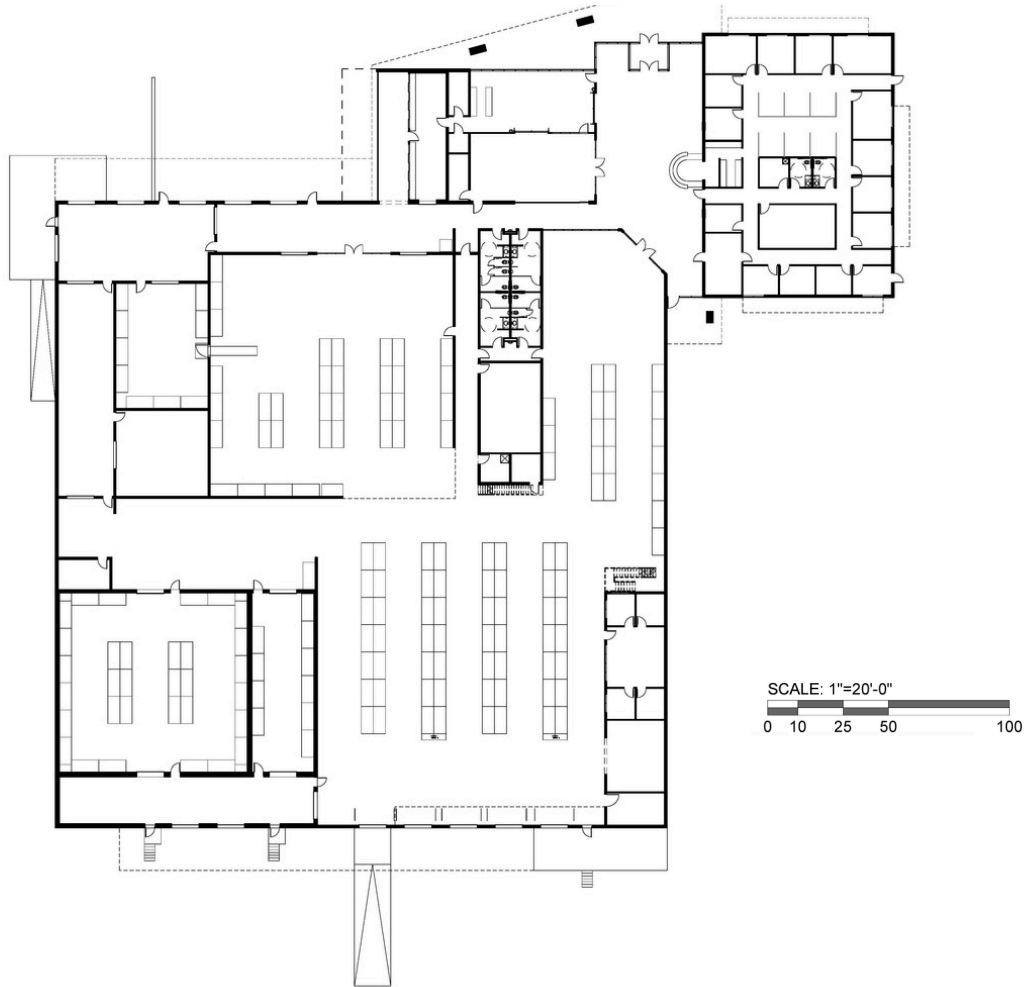
- Total sq. ft = **24,390 sq ft**
 - Cooler = 1,505 sq ft (1 Rack High)
 - Freezer = 1,265 sq ft (1 Rack High)
 - Dry Storage = 13,642 sq ft (3 Racks High)
 - Processing = 1,150 sq ft
 - Office Space = 2,665 sq ft
 - Parking = 15 Staff and Volunteer Spots / 13 Food Bank Truck Spots

“ The need has outgrown our current space. ”

- David O'Neil
Wichita Falls Area Food Bank CEO



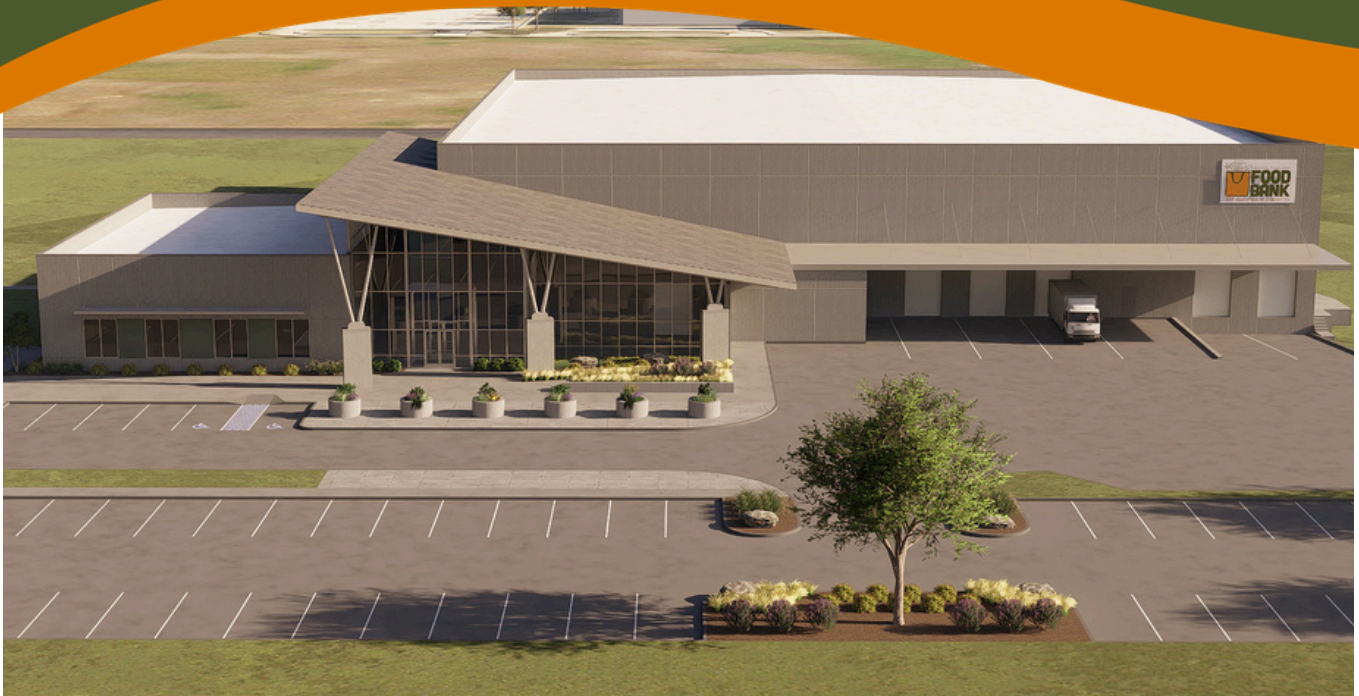
James N. McCoy Foundation Distribution and Education Center



- Total sq. ft =
 - Cooler = 3,659 sq ft (3 Racks High)
 - Freezer = 1,205 sq ft (3 Racks High)
 - Dry Storage = 27,459 sq ft (4 Racks High)
 - Processing = 7,677 sq ft
 - Office Space = 5,071 sq ft
 - Parking = 136 Staff and Volunteer Spots / Ample Food Bank Truck Spots
 - Teaching Kitchen = 926 sq ft
 - Volunteer Training = 845 sq ft
 - Conference Space / Board Room = 359 sq ft

To turn this vital project into a reality, the Wichita Falls Area Food Bank is launching a capital campaign to build a new Distribution and Education Center. This vision can only be achieved through your generous support as a community stakeholder.

Nourishing Lives. Building Tomorrow, Today.



**Renderings are for planning purposes and are not finalized.*

Nourishing Lives. Building Tomorrow. - A Community Campaign

The Wichita Falls Area Food Bank has launched a fundraising campaign to support the construction of the James N. McCoy Foundation Distribution and Education Center, combining food distribution with education. Support from generous donors will provide the ability to increase the amount of sourced fresh and nutritious food, as well as hosting additional nutrition education classes in an on-site teaching kitchen. Imagine the lives that will be changed by expanding the amount of health-promoting and nutritious food distributed across our 12-county area.

“ A new facility, with capacity to meet the growing need, is vital to serve Wichita and the 11 surrounding counties. ”

- Lauren Johnson
Campaign Committee Chair



The new facility will be at the corner of Hammon Rd. and Production Blvd., with a total budget of \$18.6M. Between a multi-year grant and cash reserves, the Food Bank will invest \$1.6M in this project, resulting in a \$17M campaign.

\$646,000	■	:Land
\$15,000,000	■	:General Construction
\$1,200,000	■	:Engineering and Design Cost
\$1,000,000	■	:Fixtures, Finishing, and Equipment
\$715,000	■	:Inflation Cushion and Contingencies

FREQUENTLY ASKED QUESTIONS

Why is the James N. McCoy Foundation Distribution and Education Center being built now?

More of our neighbors in need experience hunger each year, resulting in 42,000 neighbors seeking hunger relief in our rural 12-county service area. Our current facility only allows us to serve an estimated 28,000 neighbors, and this facility will allow us to serve those who need help today, while preparing for future growth.

Were existing facilities considered?

A local real estate professional was consulted from 2021-2023 to identify existing facilities and various properties; however, the most viable option was to construct a facility tailored to current needs and food bank logistics.

Will this project meet our current and future needs?

The new facility will allow us to nourish the estimated 14,000 unserved neighbors in need by increasing vertical storage capacity.

- The architectural plan is designed with insight and recommendations from visiting six other food banks, and its layout allows for an additional 104,000 square feet of expansion if needed.
- The distribution layout establishes a disaster relief area for emergency food and water.

How does the James N. McCoy Foundation Distribution and Education Center increase efficiency?

The architectural plan is tailored to align with food bank logistics to increase efficiencies and safety.

- Larger storage capacity will decrease procurement costs by increasing purchasing power.
- Upgraded technology with advanced inventory tracking systems will perform inventory in real-time rather than closing the food bank to inventory products.
- High-quality materials will withstand the harsh elements the local area experiences.

What is planned for the existing facility?

The existing facility will be placed on the market for sale with a reputable real estate professional who is skilled in commercial properties.

Will there be an increase in operational costs?

The Food Bank is preparing for an increase, but due to offsets in efficiency implementations, the increase is expected to be minimal.



WAYS TO GIVE

You can make a campaign gift as a one-time donation or with a pledge that can be fulfilled over a period of up to three years. Pledge payments can be fulfilled with a payment using any of these methods:

- **Check:** Make your gift with a check payable to the “Wichita Falls Area Food Bank” with “Capital Campaign” written in the memo line for the full amount or a multi-year pledge. Send the check and enclosed Gift Form to the Wichita Falls Area Food Bank, located at 1230 Midwestern Parkway, Wichita Falls, TX 76302.
- **Credit Card Payment:** Make your gift with a one-time payment or sign up for a recurring charge to your credit card by completing the enclosed Gift Form and mail to the Wichita Falls Area Food Bank, located at 1230 Midwestern Parkway, Wichita Falls, TX 76302. For online giving, please visit WFAFB.org and choose “Capital Campaign: Nourishing Lives. Building Tomorrow.” in the designation drop-down box. You may also call the Food Bank at 940.766.2322 to make a credit card payment.
- **Donor-Advised Fund Gift:** Make your gift by recommending a donation to the Wichita Falls Area Food Bank for the Capital Campaign if you have an established Donor-Advised Fund.
- **Gift of Appreciated Property:** Make your gift using securities, real estate, or any other property having a fair market value greater than its original purchase price. When you donate appreciated property you have held longer than one year, you may qualify for a federal income tax charitable deduction which may eliminate capital gains tax. Instructions for a gift of appreciated property are available by contacting the Food Bank at 940.766.2322 or JulieNawrocki@wfab.org.
- **Gift of IRA Retirement Benefits:** Make your gift by directing all or a portion of your required minimum IRA distribution to the Wichita Falls Area Food Bank if you are at least 70 ½ years old. Qualified charitable distributions are tax-neutral. Instructions for a gift of IRA retirement benefits are available by contacting the Food Bank at 940.766.2322 or JulieNawrocki@wfab.org.

All gifts are tax deductible to the extent allowable by law. This information is not intended as financial or legal advice. Please consult your financial planner, estate or tax attorney, or Certified Public Accountant (CPA) as you consider philanthropic gifts.

For more information, please contact Julie Nawrocki, Wichita Falls Area Food Bank Director of Philanthropy, at 940.766.2322 or JulieNawrocki@wfab.org.