

Placing boom M47

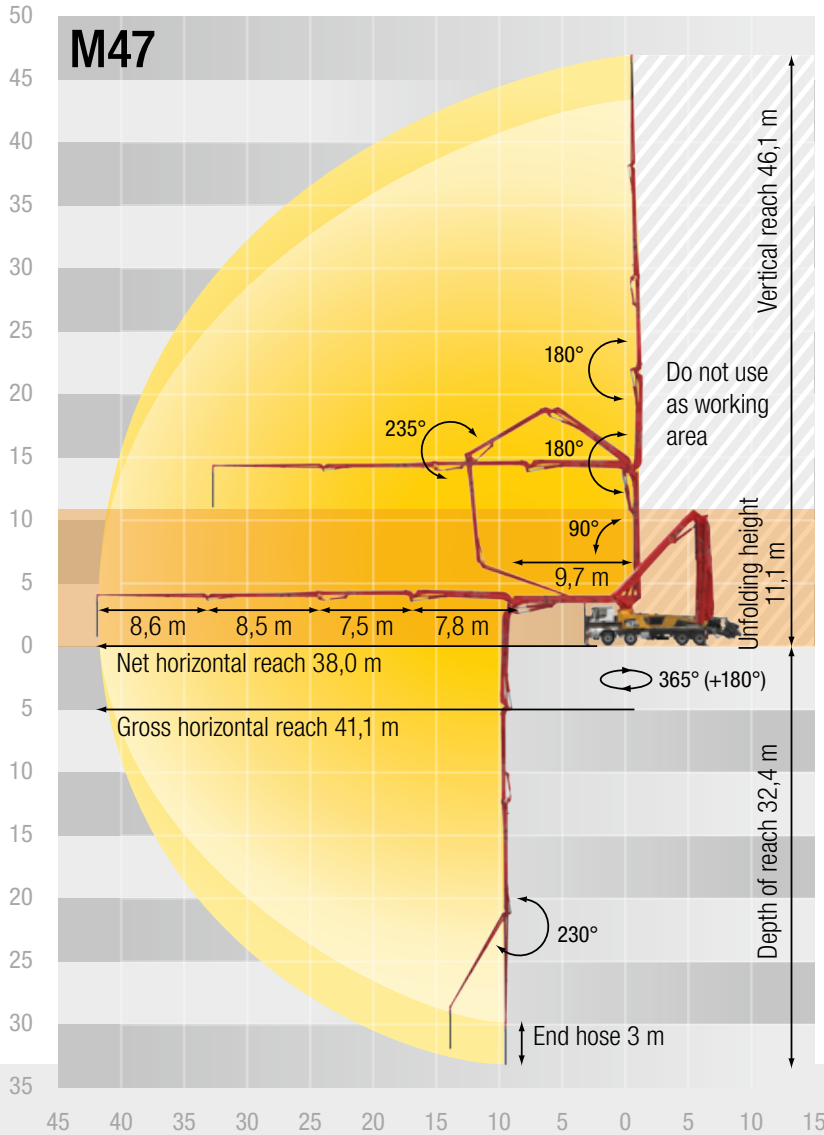
Folding type	5-arm Roll-Z fold system (RZ)
Vertical reach	46.1 m
Horiz. reach	41.1 m gross
Depth of reach	32.4 m
Unfolding height	11.1 m
End hose length	3 m (standard) / 4 m (restricted) ¹
Delivery lines	DN 125
Slewing circle	365°

General

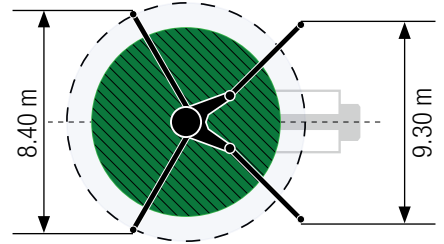
Support width	front	/ rear
Standard	8.4 m	/ 9.3 m
OSS	5.6 m	/ 6.9 m
iSC	2.6 – 8.4 m	/ 2.6 m – 9.3 m
Overall length	11.9 m	
Height	under 4.0 m	

¹ e.g. without end hose squeeze valve and dual-section end without concrete brake

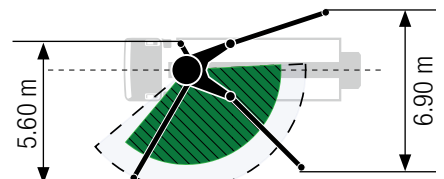
Support width based on center of support leg



Standard – Full support

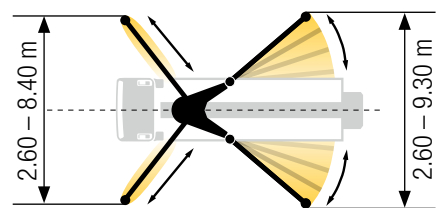


OSS* – One-side support



* non EEA, no CE marking

iSC** – Full-flexible support



** EEA, CE marking



Equipment lines

To make it easier to select from the numerous configuration options, three equipment lines, as well as a few option packages, are available.

Standard line

This equipment includes components which Putzmeister considers to be an economic standard for working efficiently and safely. Combined with the “German/EU road use approval” option package, the machine is ready for use throughout Europe.

High line

The high line provides easier operation, reduce maintenance costs and increased lighting comfort.