



STEELTECH Series

MK32L

Placing boom MK32L

Standard equipment

Compact line, studied for assembling on 4 and 5 axles chassis

Ideal load distribution on the axles to obtain better driving stability

Outriggers fully hydraulic controlled on both machine sides with front telescopic double extension at automatic patented sequence and fixed rear outriggers.

High loading capacity drum with elliptic bottom, made of 30MnB5 wear-resistant steel

Placing boom MK32L, 4 sections, pipeline diameter 100 mm, "Z" folding system

Pumping unit with 7" S-valve with high concrete suction performances and filling ratio, improved and optimised concrete flow to reduce wear and fuel consumption

Proportional boom control

Concrete flow regulator

Safety device at concrete discharging door opening

Reduction 5"-4" 3000mm long to decrease pumping pressure and wear

Two proportional radio remotes Hetronic with two boom movement speeds, synthesiser for automatic frequency search, 8 positions joystick and concrete flow rate regulator. 20 m cable

Vibrator on the concrete hopper grid with remote control

Centralized lubrication system for pumping unit

Oil automatic lubrication system for pumping pistons

Additional manual lubrication system for pumping unit

Hard plastic outrigger support plates with relevant housing

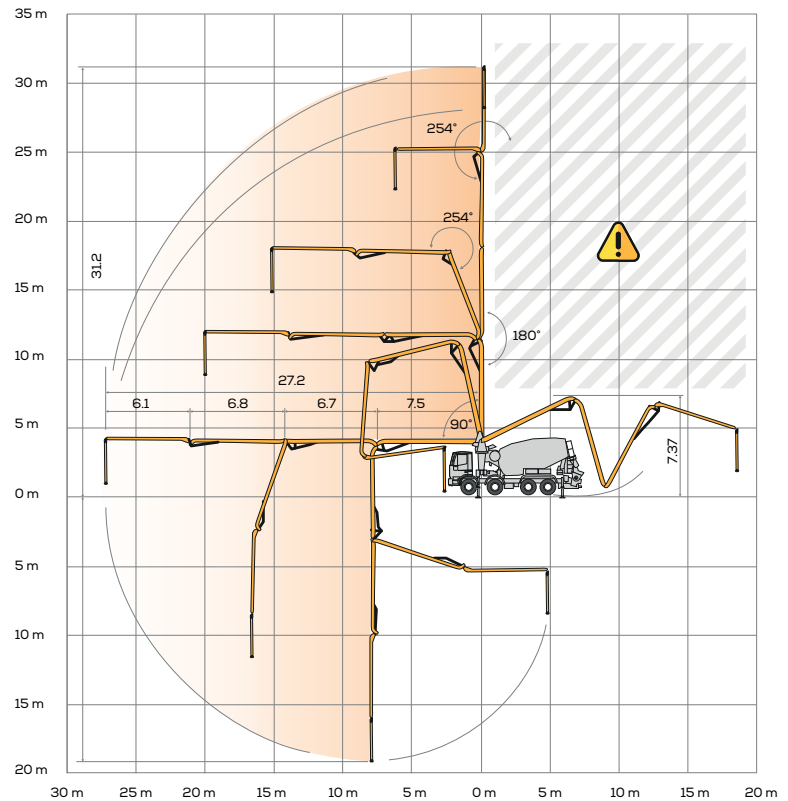
Light for pumping unit hopper

Accessories for cleaning and washing

Automatic concrete discharging control with hopper concrete level sensor

Concrete pipes in double thickness with chrome carbide inserts in high wear resistant CIFA Long Life Hard (LLH)

Long life wear plate and cutting ring with hard carbide inserts



Main options

LSC advanced - Light Stability Control

Fiber-glass hopper cover

2xHBC Radio remote control, in place of the Hetronic supplied as standard

Placing boom continuous rotation (not available with LSC)

High pressure water pump + manual washing gun + cable retractor reel

"Ekos" dust blocking device for drum closing

Concrete shut-off valve

Aluminum hose/pipe holder on both sides

Smartronic Video

