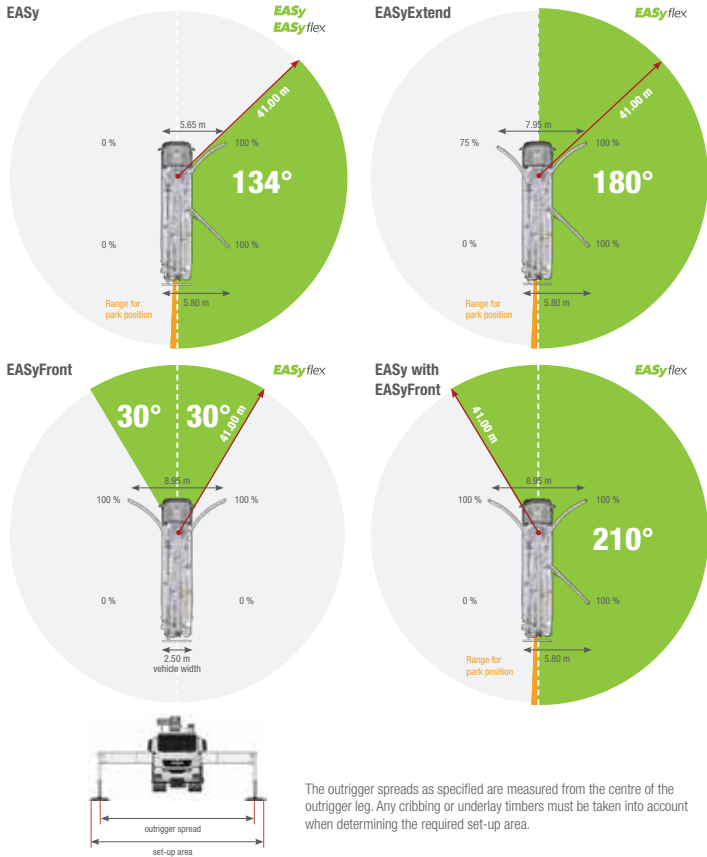


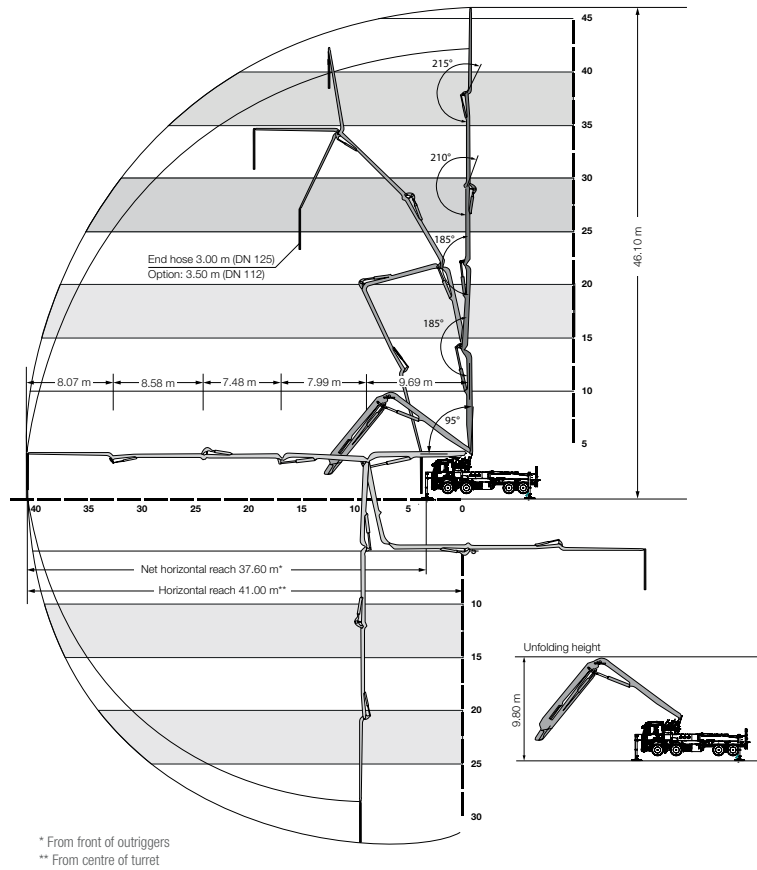
EASy and EASyflex

The outrigger systems EASy and EASyflex extend the range of applications of the S 47 SX III. With EASy, the concrete pump can be safely supported on one side, if required, whilst covering a working range of 134°. EASyflex provides further outrigger combinations and as such, more flexibility on the jobsite. In this way, pump applications can be achieved with maximum working safety even in difficult, restricted spaces. More flexibility for more safety.



S 47 SX III Truck-mounted concrete pump

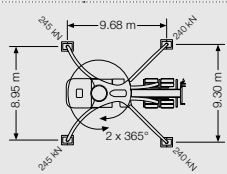
Working range



S 47 SX III Truck-mounted concrete pump

Technical data

Performance		
Pump kit	P2023-110/75	P2525-120/85
Drive	l/min 636	636
Delivery cylinders	mm 230 x 2,000	250 x 2,500
Concrete output max.	m ³ /h 161	162
Pressure on concrete max.	bar 85	85
Stroke rate max.	1/min. 32	22
Concrete valve	B-ROCK	B-ROCK
Hydraulic system		
Design	open system	
Hydraulic tank	l 480	
Boom	47 R	
Delivery line	DN 125	
Length of end hose	m 3.00 with end hose DN 125 / 3.50 (1.00 + 2.50) with end hose DN 112	
Vertical reach	m 46.10	
Reach depth	m 32.40	
Horizontal reach	m 41.00 (from centre of turret)	
Net horizontal reach	m 37.60 (from front of outriggers)	
Number of boom sections	5	
Height of the inflexion points	m 4.30 / 14.00 / 22.00 / 29.50 / 38.00	
Slewing range	2 x 365°	
Folding height	m 9.80	
Support		
Outrigger width, front	m 8.95	
Outrigger width, rear	m 9.30	
Outrigger load, front	kN 245	
Outrigger load, rear	kN 240	
Chassis (examples*)	Mercedes-Benz Arocs 3546	MAN TGS 35.420
Axes configuration	8x4	
Wheelbase	mm 5,750	
Length	mm 11,880 / 11,850, 11,840 / 11,810 (with / without underide guard)	
Miscellaneous		
Water tank	l 610	



*Can be mounted on different chassis frames