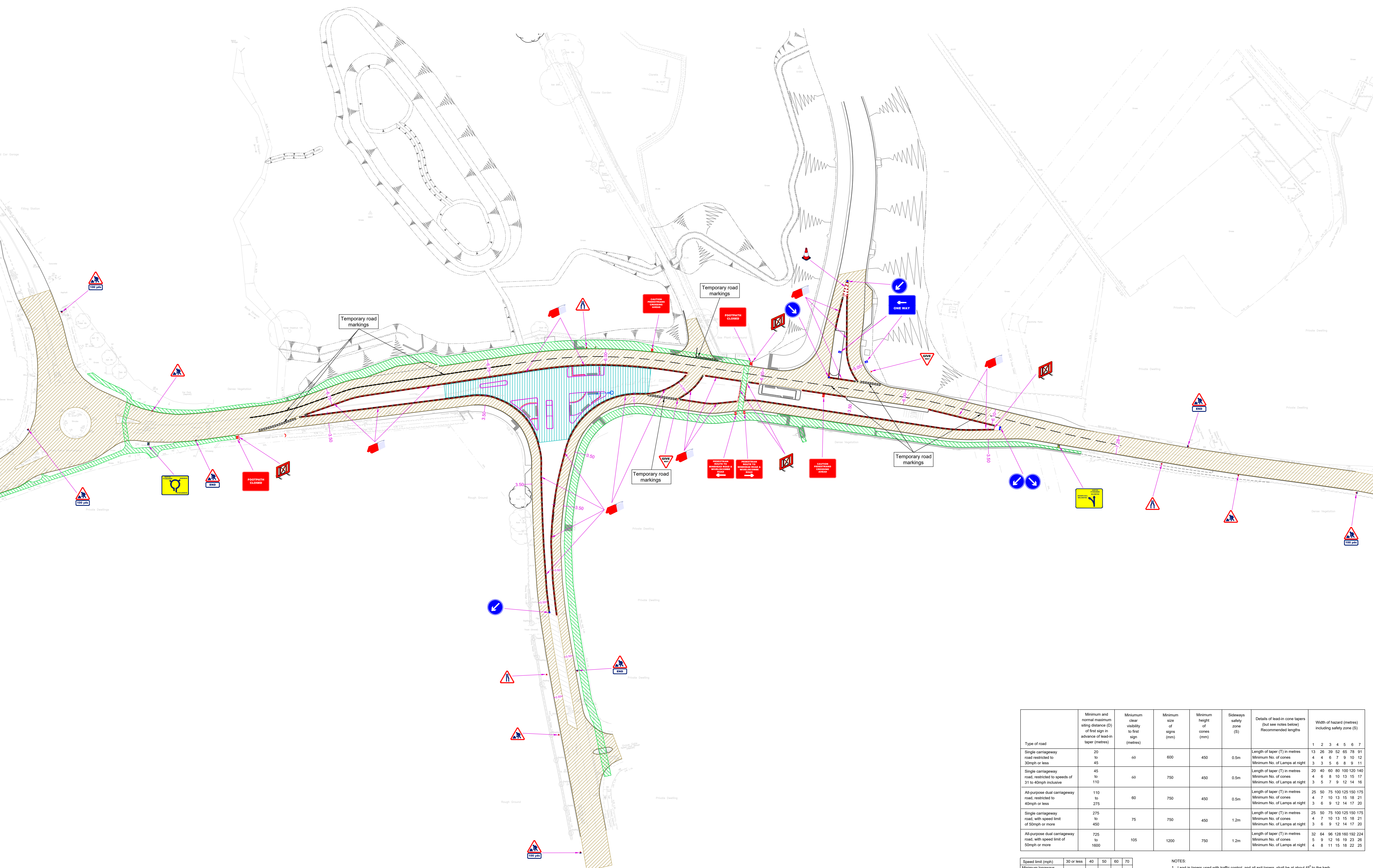


All signage in accordance with Chapter 8. The Traffic Management Plan is to be approved by the Highway Engineer prior to the commencement of the works.

Mains services are in the vicinity of the works. Refer to existing record plans and use CAT & Genny detection equipment before commencing excavation works. Use safe location and dig procedures.



B 02.02.26 Right turn route out of Mill Lane added.
 A 11.08.25 Temporary traffic signals removed to provide free flow of traffic along Staplegrove Road and remove the requirement for a right turn in and out of Silk Mills Road.

REV: DATE: COMMENTS:

PROJECT: **BLOOR HOMES**
 STAPLE GROVE
 TAUNTON
 SOMERSET

DRAWING:
 SECTION 278 WORKS
 TRAFFIC MANAGEMENT
 PHASE 6 WORKS

DATE: 11/12/2024	DRW: AR
REVISION: B	CHECKED:
DRG No.: 2307-206	SCALE: 1:500 @ A0
JOB FOLDER:	

Type of road	Minimum and normal maximum signing distance (D) of first sign in advance of lead-in taper (metres)	Minimum clear visibility to first sign (metres)	Minimum size of signs (mm)	Minimum height of cones (mm)	Sideways safety zone (S)	Details of lead-in cone tapers (but see notes below) Recommended lengths	Width of hazard (metres) including safety zone (S)
Single carriageway road restricted to 30mph or less	20 to 45	60	600	450	0.5m	Length of taper (T) in metres Minimum No. of cones Minimum No. of Lamps at night	13 26 39 52 66 79 91 4 4 6 7 9 10 12 3 3 5 6 8 9 11
Single carriageway road, restricted to speeds of 31 to 40mph inclusive	45 to 110	60	750	450	0.5m	Length of taper (T) in metres Minimum No. of cones Minimum No. of Lamps at night	20 40 60 80 100 120 140 4 6 8 10 13 15 17 3 5 7 9 12 14 16
All-purpose dual carriageway road, restricted to 40mph or less	110 to 275	80	750	450	0.5m	Length of taper (T) in metres Minimum No. of cones Minimum No. of Lamps at night	25 50 75 100 125 150 175 4 7 10 13 16 21 3 6 9 12 14 17 20
Single carriageway road, with speed limit of 50mph or more	275 to 450	75	750	450	1.2m	Length of taper (T) in metres Minimum No. of cones Minimum No. of Lamps at night	25 50 75 100 125 150 175 4 7 10 13 15 16 21 3 6 9 12 14 17 20
All-purpose dual carriageway road, with speed limit of 50mph or more	725 to 1600	105	1200	750	1.2m	Length of taper (T) in metres Minimum No. of cones Minimum No. of Lamps at night	32 64 96 128 160 192 224 5 9 12 16 19 22 26 4 8 11 15 18 22 25

Speed limit (mph)	30 or less	40	50	60	70
Minimum longways clearance (L) metres	0.5	15	30	60	100

- NOTES:
- Lead-in tapers used with traffic control, and all exit tapers, shall be at about 45° to the kerb line with cones spaced 1.2 metres apart.
 - The maximum spacing distance of cones in longitudinal lengths of coning shall be 9 metres, but no fewer than 2 cones in any length between tapers.
 - In certain circumstances on congested roads with speed limits of 30mph or under, the taper may also be reduced to 45°.

C.J.L. construction Ltd.
 The Stables
 Honey Hill Lane
 Congresbury
 Bristol
 BS49 5JX
 Tel: 01934 853227
 Fax: 01934 853042