

**Product Specification****PRODUCT: Marinated Ciliegine Salad 6/12oz.****SPECIFICATION # 01000****PLANT (S): 09-517****EFFECTIVE DATE: 04/21/22****PAGE: Page 1 of 5****VERSION: 2****SUPERSEDES: 02/21/19 V1****1. DESCRIPTION:**

- 1.1. Marinated Fresh Mozzarella (Sundried Tomato) is a cherry size (ciliegine) fresh mozzarella marinated with a blend of olive oil, herbs, basil, and sundried tomato.
- 1.2. Each container contains 12 ounces of salad.
- 1.3. Six containers are packed per case.

**2. BRAND NAME: Liuzzi Cheese****3. MICROBIOLOGICAL SPECIFICATIONS:**

- 3.1. Coliform <100/g
- 3.2. Mold / Yeast <100/g
- 3.3. Aerobic <100,000/g

**4. INGREDIENT STATEMENT:**

- 4.1. Pasteurized whole milk, Starter, Rennet, Salt, Olive oil, Canola oil, Sundried tomato, blend of herb and spices. CONTAINS: MILK

**Product Specification****PRODUCT: Marinated Ciliegine Salad 6/12oz.****SPECIFICATION # 01000****PLANT (S): 09-517****EFFECTIVE DATE: 04/21/22****PAGE: Page 2 of 5****VERSION: 2****SUPERSEDES: 02/21/19 V1****5. NUTRITION INFORMATION:**

## 5.1. Nutrition Information

<b>Nutrition Facts</b>			
<b>Serving Size:</b>	1 oz ( 28 g )		
<b>Servings Per Container:</b>	App. 12		
<b>Amount Per Serving</b>			
<b>Calories</b>	110	<b>Calories from Fat</b>	
			<b>% Daily Value *</b>
<b>Total Fat</b>	10 g		15%
Saturated Fat	2g		10%
<i>Trans</i> Fat	0 g		
<b>Cholesterol</b>	10 mg		3%
<b>Sodium</b>	65mg		2%
<b>Total Carbohydrate</b>	2 g		0%
Dietary Fiber	0 g		
Sugars	0 g		
<b>Protein</b>	3 g		
Vitamin A	4%	•	Vitamin C 15%
Calcium	6%	•	Iron 0%
* Percent Daily Values are based on a 2,000 calorie diet. Your daily values may be higher or lower depending on your calorie needs:			
	Calories:	2,000	2,500
Total fat	Less than	65g	80g
Saturated Fat	Less than	20g	25g
Cholesterol	Less than	300mg	300mg
Sodium	Less than	2,400mg	2,400mg
Total Carbohydrate		300g	375g
Dietary Fiber		25g	30g

7.2 Allergens: Contains Milk

7.3 Country of Origin: USA

7.4 Enzyme – Vegetable

7.5 Claims

7.5.1 Made with rBST free milk

**Product Specification****PRODUCT: Marinated Ciliegine Salad 6/12oz.****SPECIFICATION # 01000****PLANT (S): 09-517****EFFECTIVE DATE: 04/21/22****PAGE: Page 3 of 5****VERSION: 2****SUPERSEDES: 02/21/19 V1****6. UPC / GTIN:**

6.1. UPC: 816115010007

6.2. GTIN: 00816115010007

**7. SHELF LIFE: 45 days from date of packaging.****8. STORAGE REQUIREMENTS:**

8.1. Product must be stored 33-38°F

**9. SHIPPING REQUIREMENTS:**

9.1. Carriers used to transport product shall be maintained at 33-38°F

9.2. Trailers shall be clean, dry, and free of foreign material and objectionable odors.

**10. PRODUCT CODING & LABELING REQUIREMENTS:**

## 10.1. Lid Labels:

10.1.1. Each piece shall be identified with product label and code date “packed on”.

10.1.2. Product label shall have the product type, ingredient statement, nutritional facts, required temperature storage, net weight, and plant number.

10.1.3. A self-adhesive, preprinted label is applied to the lid of each container.

**Product Specification**

**PRODUCT: Marinated Ciliegine Salad 6/12oz.**

**SPECIFICATION # 01000**

**PLANT (S): 09-517**

**EFFECTIVE DATE: 04/21/22**

**PAGE: Page 4 of 5**

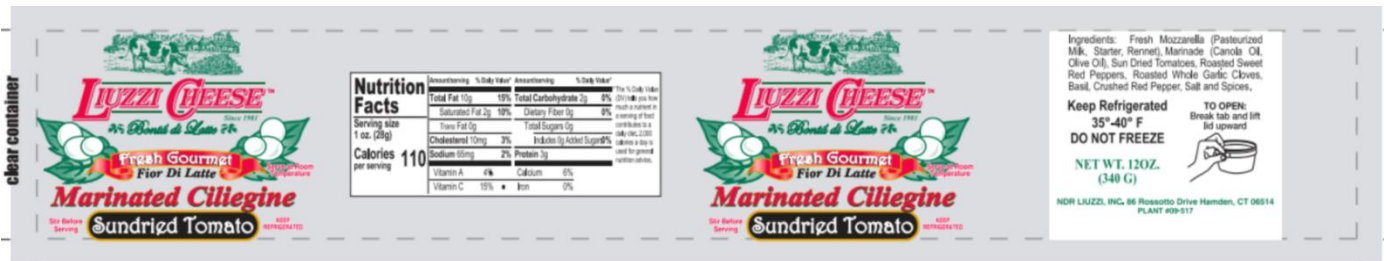
**VERSION: 2**

**SUPERSEDES: 02/21/19 V1**

Lid Graphic (for illustration only)



11.1. Container Graphics (For illustration – not to scale)



10.1.4. Each individual preprinted container is marked on the bottom with the following information: Expiration date; Production Code Date.

10.1.5. The expiration date is a numerical expression of 45 days past the date of production.

10.1.6. Production code date is the Julian day of the year.

**Product Specification****PRODUCT: Marinated Ciliegine Salad 6/12oz.****SPECIFICATION # 01000****PLANT (S): 09-517****EFFECTIVE DATE: 04/21/22****PAGE: Page 5 of 5****VERSION: 2****SUPERSEDES: 02/21/19 V1****10.2. Case Label:**

- 1.1.1. Each case shall be labeled with product type, Item number, net weight, “packed on” date in calendar format (02/13/2015), and plant number.

**11. CASE PACK INFORMATION:**

- 11.1. Six containers per case
- 11.2. Case Dimensions: (l, w, h): 13.63” x 7.13” x 6.82”
- 11.3. Case Cube: 0.3836 ft<sup>3</sup>
- 11.4. Net Weight: 4.5 lbs.
- 11.5. Gross Weight: 7.5 lbs.

**12. PALLET INFORMATION:**

- 12.1. Cases per tier: 12
- 12.2. Tiers per pallet: 10
- 12.3. Cases per pallet: 120