

50 Out of 1

♩ = 250

Damian Erskine

Intro:

E- /G D⁷/F[#] B⁷ 4X

A1

E- /G D⁷/F[#] A-

E-/G B⁷/F[#] E- /G

D⁷/F[#] A- E-/G B⁷

A2

E- /G D⁷/F[#] A-

E-/G B⁷/F[#] E- /G

D⁷/F[#] A- E-/G B⁷

E- /G D⁷/F[#] B⁷ 4X

repeat phrase loosely and at will

B

D-11

E-11

C-11

F-11



OPEN PIANO SOLO
After DC - Cue to last 2 bars

D-11

E-11

C-11

Bb-11



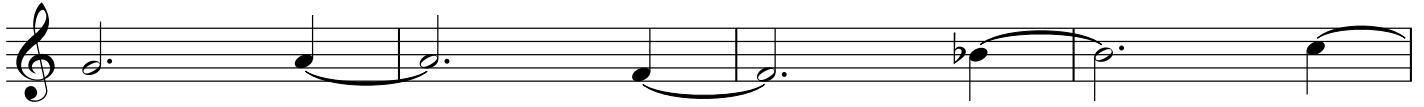
D-11

E-11

C-11

F-11

Gbø7



Gbø7

F-11



GbΔ7(#11)

EbΔ/G

D7/F#

D-/F

**Finé** F-11**A1**

E-

/G

D7/F#

A-



E-/G

B7/F#

E-

/G



D7/F#

A-

E-/G

B7



E- /G D7/F# A- E-/G B7/F#

Open

B D-11 E-11 C-11 F-11

D-11 E-11 C-11 Bb-11

D-11 E-11 C-11 F-11 Gbø7

Gbø7 F-11

GbΔ7(#11) EbΔ/G D7/F# D-/F

A1 E- /G D7/F# A- E-/G B7/F#

E- /G D7/F# A- E-/G B7

(Quote melody on way out)

DC al Fine