



Lexia
 **CORE5**[™]
READING

Literacy Acceleration
for Pre-K–Fifth Grade

Lexia[®]

Why Lexia?

Singularly focused on science of reading based solutions for 40 years, Lexia® stands as one of the most rigorously researched, independently evaluated, and continuously proven literacy companies in the world. Key elements that make Lexia unique include:

- Research and results
- Adaptive Blended Learning (ABL) model
- Patented Assessment Without Testing® (AWT) technology
- Focus on academic language
- Personalized and scalable implementation partnerships

Why Core5?

Built on the science of reading, Lexia® Core5® Reading is an adaptive blended learning program that accelerates the development of literacy skills for **students of all abilities**, helping them make that critical shift from learning to read to reading to learn. Key advantages that make Core5 unique include:

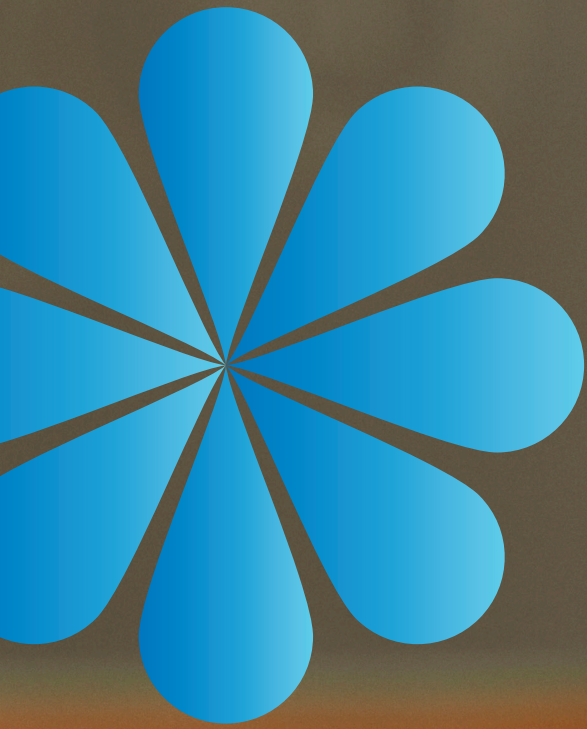
- The depth and breadth of Core5's scope and sequence support both foundational and advanced literacy skills.
- Students receive more personalized learning through our Adaptive Blended Learning model.
- Teachers are empowered to differentiate instruction for each student using meaningful data powered by our Embedded Assessment technology.
- Administrators can see a full picture of academic progress across a district, school, grade, and class, down to the individual student.

“

Core5 is a comprehensive technology-based literacy program that extends learning for students who are advanced and accelerates students who struggle. It's an all-in-one stellar package that seamlessly integrates into the classroom.

—**Alex Odell**, Principal
Mary Walter Elementary School, Fauquier County Public Schools, Virginia

”





Research and Results Matter

While many reading programs may be described as research-based, Lexia programs are **research-proven** to improve learning outcomes. Our products are evaluated using rigorous scientific methods and have been found effective with a variety of populations.

More Than 20 Rigorous Studies

The quantity and quality of efficacy research on Lexia products is unparalleled. Lexia currently has more than 20 studies that have been published in independent, peer-reviewed journals. Core5 meets ESSA's Strong Evidence criteria, and the National Center on Intensive Interventions (NCII) reported positive effects favoring Lexia users over non-users in all reviewed studies.

Equity for All

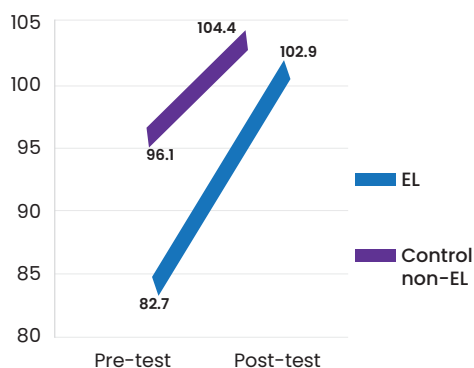
Positive results have been demonstrated for all students, including students who are English Learners, Black/African American, Latinx, from low-SES backgrounds, based in rural communities, based in urban communities, public school attendees, charter school attendees, and/or at risk for reading difficulties.



Demonstrated Strong Outcomes



In an independent evaluation by LEAP Innovations of its Pilot Network program with a diverse sample of Chicago-area students, **Core5** showed a statistically significant positive impact.¹ In partnership with LEAP, the use of Lexia resulted in a 2.57-point increase in NWEA reading scores.² Put another way, a typical student using Lexia in the Pilot Network **would gain 11 additional percentile points** above a typical comparison student starting with the same score. In a separate subpopulation analysis, Core5 contributed to Black and low-income students demonstrating equally impressive gains in their overall literacy performance.

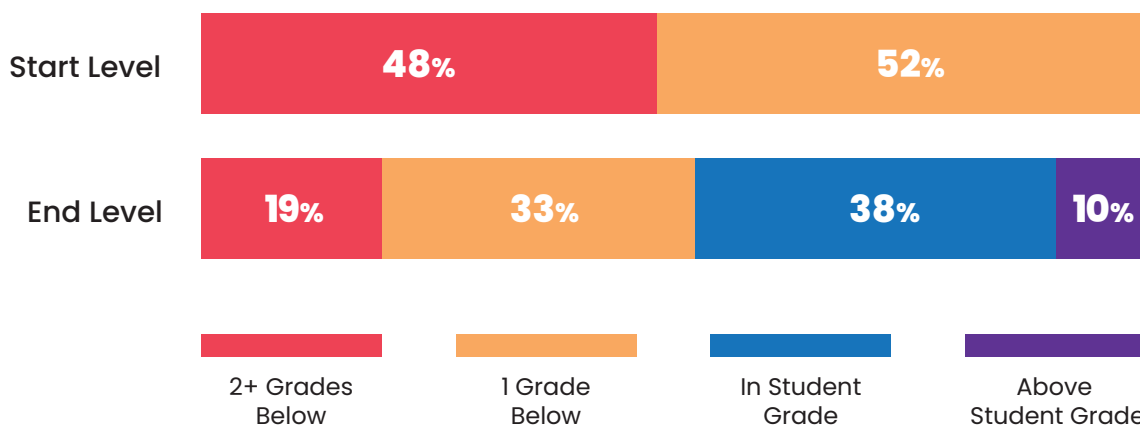


Research-Proven With English Learners

Among a group of first and second graders in an urban setting, EL students who used Core5 for a year demonstrated large gains on a standardized reading measure, closing the gap in reading performance relative to non-EL peers.

Closing the Gap in as Little as 10 Weeks for Your Most At-Risk Students

- At-risk students made substantial progress in Core5 in just a few months. Nearly half (48%) of these students ended the school year working on skills in or above their grade level.
- The percent of students working two or more grade levels below their grade was reduced from nearly half (48%) to less than one-third (19%).



¹ Statistical significance was not adjusted for multiple hypothesis tests.

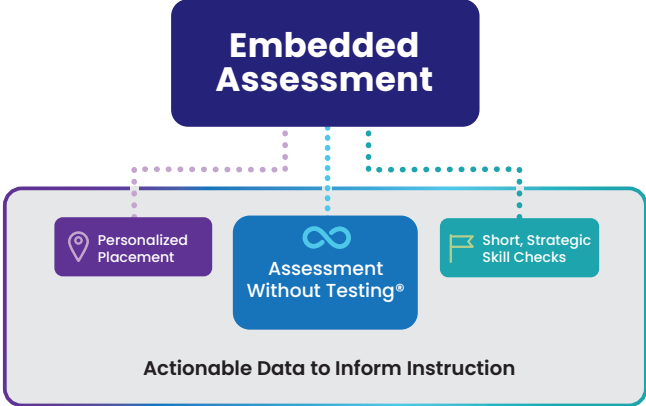
² The standardized effect size for this point estimate is 0.282.

For more detail about these studies and more, visit lexialearning.com/why-lexia/research-proven

Embedded Assessment

Lexia’s approach to Embedded Assessment, including our patented Assessment Without Testing® technology, provides teachers and administrators real-time progress-monitoring data without stopping instruction to give a test, **saving teachers up to a MONTH of instructional time by:**

- Identifying student risk levels
- Predicting future performance
- Prescribing instructional intensity
- Providing real-time data and action plans



Predicting the Future, Changing the Learning Trajectory After Just One Month of Use

After just one month of use, Core5 identifies a student’s overall risk level and predicts their likelihood of reaching their end-of-year, grade-level benchmark. Armed with this highly accurate monthly prediction and the myLexia® daily action plan, educators are empowered to monitor progress and immediately modify instruction—no waiting until end-of-year formalized standardized testing occurs.



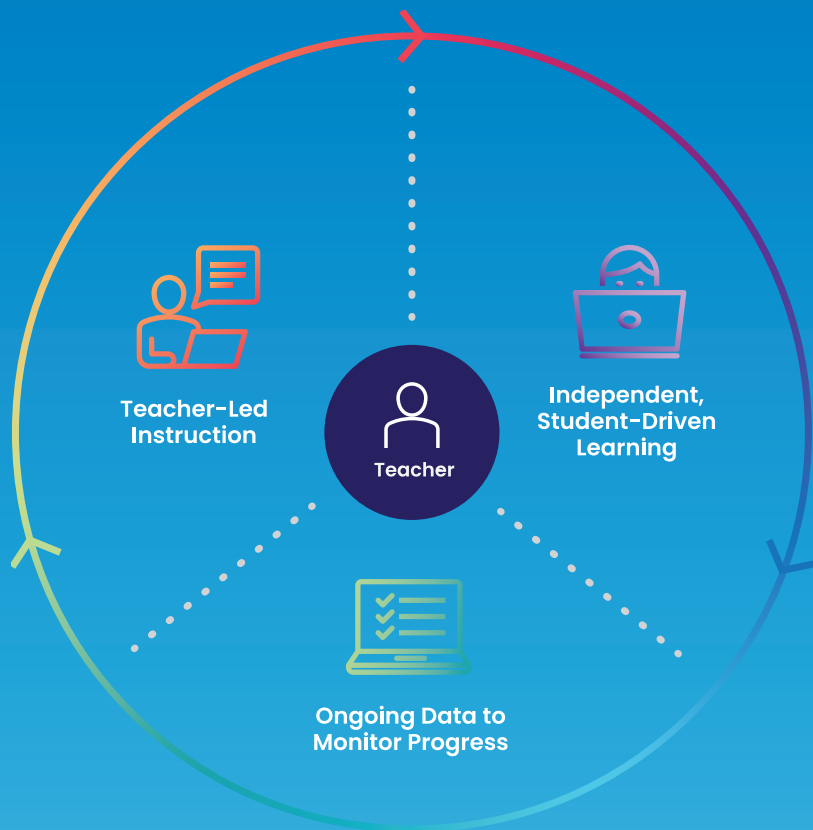
Data-Driven Action Plans

The monthly risk levels drive how much time in the online program is recommended for each student. A personalized usage target (prescription of intensity) automatically assigned to each student is designed to improve their learning gains. These risk categories can also help a teacher prioritize instructional time when using Lexia Lessons® or other instructional material.

Performance in Core5 translates to performance on standardized assessments: At least 80% to 90% of students who reach the grade-level benchmark in Core5 earn “proficient” scores on standardized reading assessments, including aimsweb, DIBELS®/Acadience®, MAP, STAR, PARCC, SBAC, and numerous state assessments.

Adaptive Blended Learning Model

- Students are motivated by their own success as they follow personalized learning paths.
- Performance data is easy to access and simple to interpret.
- Program resources support teacher-led instruction and independent student practice.
- Personalized learning is targeted and time-efficient, with the teacher at the core of every step.
- Based on research-validated, adaptive auto-placement, students begin Core5 at the level that's just right for them.



Differentiated Support for Teachers and Administrators

Powered by the myLexia platform, Embedded Assessment data provides teachers and administrators with real-time, actionable data that **helps answer relevant questions** for both district/school leaders and teachers at a glance.

In just minutes, teachers can answer:

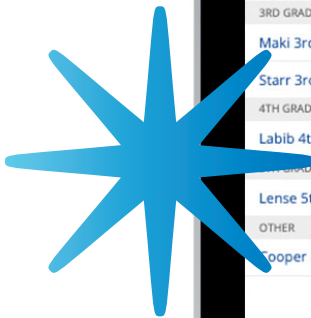
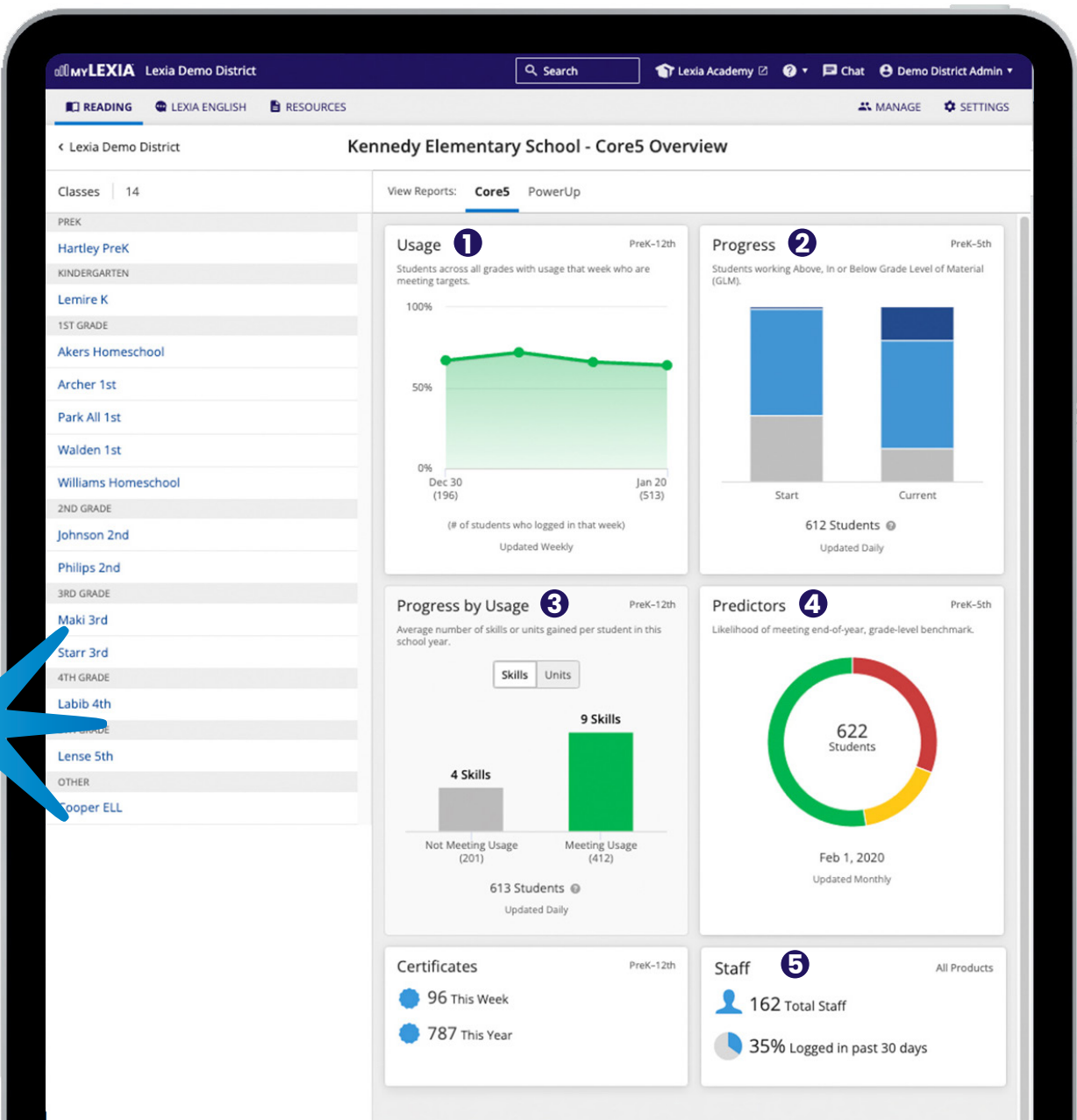
- 1 Who needs more time in the online program?
- 2 Who needs teacher-led instruction?
- 3 Who is ready for additional practice?
- 4 Who is ready to celebrate success?

The screenshot displays the 'Archer 1st Overview' dashboard in the myLexia platform. At the top, there are navigation tabs for 'READING', 'LEXIA ENGLISH', and 'RESOURCES'. Below these, there are four numbered filters: 1 (9 Need Usage), 2 (5 Need Instruction), 3 (8 Skill Builders), and 4 (8 Certificates). The main table lists 17 students with columns for 'Student Name', 'Grade Level of Material', 'Usage This Week' (Total Minutes, Target, Time Needed), 'Progress This Week' (Units Gained, Target), and 'Predictor'. Each row includes a progress bar and a status indicator (red, yellow, or green).

Student Name ↑	Grade Level of Material	Usage This Week			Progress This Week		Predictor
		Total Minutes	Target	Time Needed	Units Gained	Target	
Aleman, Mike	1st L6	22	60	+38	0	12	Red
Cardwell, Olen N	1st L8	60	30	0	16	6	Yellow
Cave, Leah	1st L7	38	60	+22	0	12	Red
Danielson, Bob	2nd L11	112	n/a	n/a	24	n/a	Green
Denney, Henry	1st L9	57	20	0	17	4	Green
Fairley, Ty	2nd L10	76	n/a	n/a	10	n/a	Green
Fincher, Tressie	1st L7	63	30	0	16	6	Yellow
Francois, Quida	1st L7	21	60	+39	12	12	Red
Furr, Cathleen	1st L6	0	60	+60	0	12	Red
Lemay, Bridget	1st L6	0	60	+60	0	12	Red
Matheny, Wilton	2nd L11	213	n/a	n/a	9	n/a	Green
Mattos, Lonnie	1st L6	15	60	+45	0	12	Red
Mcmurray, Pearl	1st L8	36	50	+14	17	10	Yellow
Mcvey, Bertha	1st L9	20	30	+10	3	6	Yellow
Merrick, Brandee	4th L17	0	n/a	n/a	0	n/a	Green
Robb, Gail	2nd L10	158	n/a	n/a	42	n/a	Green
Tibbs, Benedict	K L2	0	60	+60	0	12	Red

In just minutes, administrators can answer:

- 1** What percentage of students in my building or district are meeting their usage targets?
- 2** Has there been a decrease in the percentage of students working below grade level? Has there been an increase in percentage working in or above grade level?
- 3** What is the difference in skill acquisition for those students meeting usage vs. not meeting? And how many students are in each category?
- 4** What is the overall risk level of students in my school or district? What percentage are on target/on track to meet grade-level benchmarks and how many are at risk?
- 5** What percent of my staff has logged in to review data in the last 30 days?



Acceleration for All

Core5 provides all students—from at-risk to on-level and advanced—a systematic and structured approach to six areas of reading, from phonological awareness to comprehension.

Core5 Scope and Sequence

Grade & Level	Title	Phonological Awareness	Phonics	Structural Analysis	Automaticity/Fluency	Vocabulary	Comprehension
Pre-K	1 A Picnic in the Woods	🌐	🌐		🌐	🌐	🌐
Kindergarten	2 A Day at the Beach	🌐	🌐		🌐	🌐	🌐
	3 A Snow Day in the City	🌐	🌐		🌐	🌐	🌐
	4 The Amazon Rainforest	🌐	🌐		🌐	🌐	🌐
	5 The Scottish Cliffs		🌐		🌐		🌐
	6 A Day in Paris		🌐		🌐	🌐	🌐
Grade 1	7 The African Serengeti		🌐		🌐		🌐
	8 The South Pole		🌐		🌐	🌐	🌐
	9 The Egyptian Desert		🌐		🌐	🌐	🌐
Grade 2	10 An English Garden		🌐	🌐	🌐		🌐
	11 The Swiss Alps		🌐		🌐	🌐	🌐
	12 A Russian Circus		🌐	🌐	🌐	🌐	🌐
Grade 3	13 The Indian Rainforest			🌐	🌐	🌐	🌐
	14 A Japanese Garden			🌐	🌐	🌐	🌐
	15 A Journey Through China			🌐	🌐	🌐	🌐
Grade 4	16 The Great Barrier Reef			🌐	🌐	🌐	🌐
	17 A Hawaiian Paradise			🌐	🌐	🌐	🌐
	18 A Mexican Valley			🌐	🌐	🌐	🌐
Grade 5	19 The Southwest, USA			🌐	🌐	🌐	🌐
	20 The Ancient Greek Countryside			🌐	🌐	🌐	🌐
	21 Mesopotamia: Land Between Two Rivers			🌐	🌐	🌐	🌐

Supports foundational literacy by:

- Developing phonemic awareness
- Building understanding of letter-sound connections
- Expanding vocabulary
- Teaching word recognition

Supports advanced literacy by:

- Building academic language skills
- Developing skills for deep comprehension and text analysis
- Cultivating disciplinary knowledge
- Sparking higher-order thinking

“Core5 helps us identify the exact skills students are working on or struggling with. It has been a game-changer for us.”

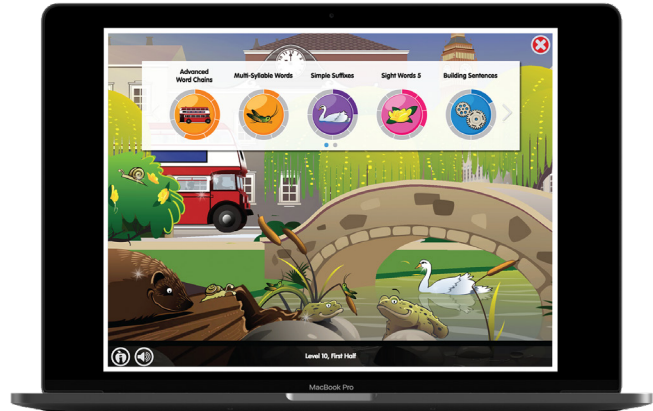
—Felicia Evans, Principal
Lander Elementary School, Mayfield City Schools, Ohio



Supports Student Agency and Growth Mindset

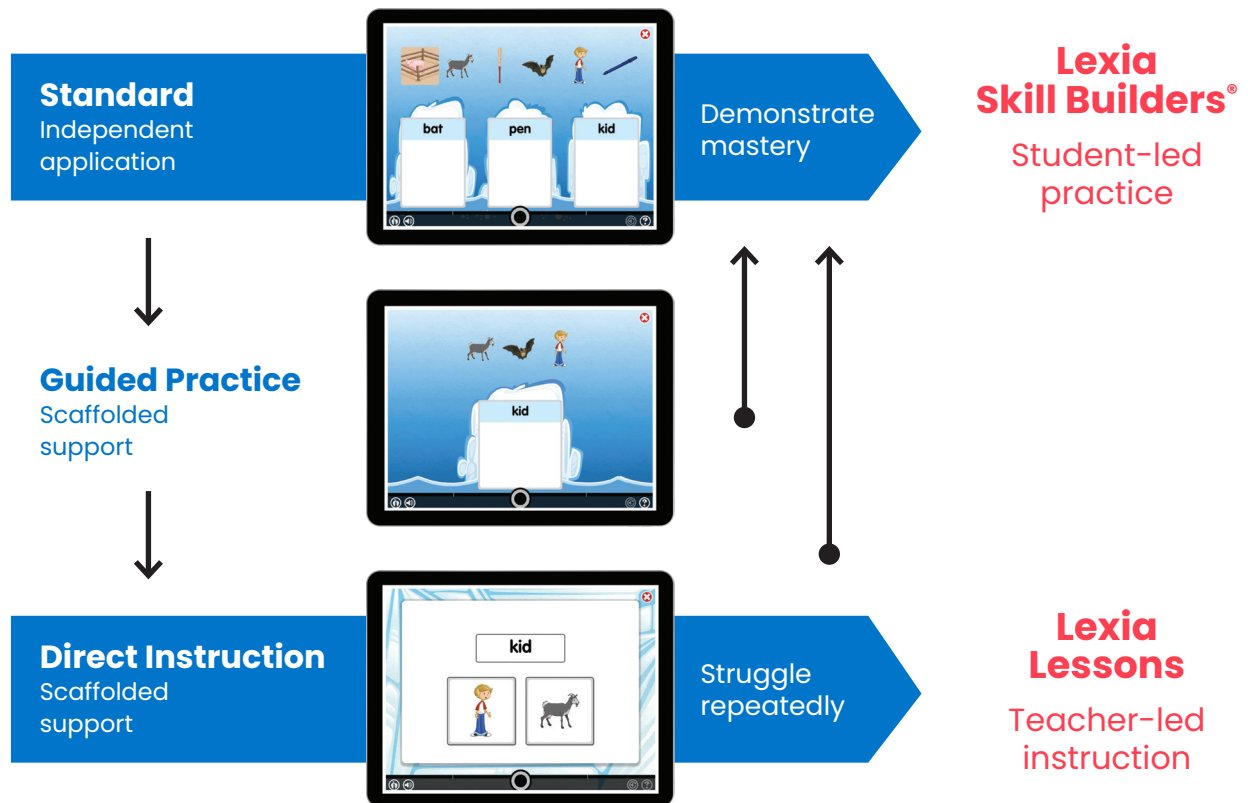
Progress monitoring and instructional supports in Core5 are designed to give students:

- A choice over their path and pace through the program
- Awareness and ownership of performance and progress—students and caregivers can track progress toward personalized goals
- An environment of encouragement and an understanding that learning is ongoing and provides the students a safe place to try, fail, and retry, as well as learn and succeed



Efficient Adaptive Branching

Core5 provides explicit, systematic, and adaptive learning, scaffolding students if they struggle, providing guided practice or even direct instruction on the specific error type, and advancing them to higher levels as they demonstrate proficiency.



Empowering Teachers

Based on student performance in the online program, Core5 alerts and recommends specific intervention and practice resources, empowering teachers to focus on what matters most: delivering just the right instruction at just the right time.



Lexia Lessons

Lexia
CORE5
READING

Lexia Lessons[®]

Comprehension
Future Tense Verbs, Lesson 2

Description

This lesson is designed to help students understand that verbs have different tenses and identify the future tense of verbs in sentences. Knowledge of verb tense helps students understand and explain texts accurately and write effectively.

TEACHER TIPS

The following lesson shows past, present, and future verb tenses. Verb tenses can be difficult for English learners, especially for students whose native languages do not have elaborate tense systems. To best address their learning needs, during the lesson, solidify the concepts using visuals, such as pictures, videos, and real-life examples. Also, during discussions, remind students to listen to others, take turns, and speak in complete sentences.

When we teach grammar, we are giving students the tools they need for academic success. The goal is not to replace a student's home language, dialect, or register, but to add to his or her linguistic toolkit.

PREPARATION/MATERIALS

- Copies of the Verb Cards at the end of this lesson (for students)
- Copies of the Student Activity Sheet (for students)

Direct Instruction

1 Pretend you are a fortune teller and someone is asking you about his or her future. What might you tell that person?

Ask students to suggest possible fortunes, such as "You will invent a new technology" or "You will be a famous singer." Display these fortunes.

2 Today, we are going to learn more about verb tenses. Every sentence has a verb that shows an action or links words. Knowing the tense of a verb will tell you when an action takes place. This will help you better understand what you read, and it will help you write more accurately.

If needed, remind students that present tense verbs show action that regularly or currently happens and that past tense verbs show action that happened in the past, or before now. See the Lexia Lesson for Past and Present Tense Verbs.

3 In addition to past and present verb tenses, there is another simple verb tense: **future**. Just like it sounds, future tense verbs show action that **will** happen in the future. The word will usually comes before the verb in the future tense.

Underline the future tense verbs in the fortunes that were displayed. For example, underline **will invent** in the fortune **You will invent a new technology**.

4 **Will invent** is a future tense verb in this sentence because it shows what will happen in the future.

If students need additional instruction, repeat this activity using other fortunes with future tense verbs.

Script page 1

Lexia Skill Builders

Lexia
CORE5
READING

Lexia Skill Builders

Fluency
Fluent Reading 1

Name: _____

Draw a line to match each punctuation mark with what it tells the reader to do.

1 !	Make your voice go up at the end of the sentence.
2 ?	Make your voice sound excited.
3 .	Do not make your voice go up or down very much.

Read each sentence aloud. Circle the punctuation mark at the end of the sentence. Then, explain what the reader's voice should do.

4 The guests are here!
Explain: The reader's voice should sound excited.

5 The guests are here?
Explain: _____.

6 The guests are here.
Explain: _____.

Read each sentence, and circle the punctuation mark that makes sense. Then, write it on the line.

7 "We found the missing ring _____" Ted yelled.	. ! ?
8 "The bee just flew away _____" Sarah asked.	. ! ?
9 The girl said, "I go to bed at 8 o'clock _____"	. ! ?
10 "That's really their house _____" he wondered.	. ! ?
11 Jaime replied, "No, I don't know his name _____"	. ! ?
12 They burst through the door and shouted, "We're here _____"	. ! ?
13 "You're sure that's the right book _____" I inquired doubtfully.	. ! ?
14 "Go away and don't come back _____" she yelled angrily.	. ! ?

★ Read Sentences 7 to 14 to a partner. Your partner should be able to tell the ending punctuation from your voice.

Lexia Skill Builders[®]

Lexia Lessons, prescribed when students struggle in the online program, are designed for one-on-one or small-group instruction by a teacher or paraprofessional.

Lexia Skill Builders provide extra paper-and-pencil practice to help students build automaticity once they have completed a level in the online program.



Support for Diverse Learners

Core5 helps all students—whether they are English Learners, at risk, struggling, on level, or even above level—boost their reading achievement through just-right instruction.



On Grade Level and Above

On-level and above-level students can work independently online or collaboratively to expand their expressive skills offline.



At Risk and Struggling

In Core5, at risk and struggling students receive adaptive scaffolding and instruction based on their specific area of needs.



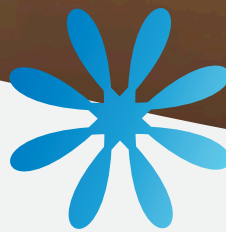
Emergent Bilinguals

Students learning English can leverage picture-based activities to build concrete and abstract academic vocabulary, as well as receive task introductions and directions in six native languages.



Special Education

Students with specific learning disabilities—such as dyslexia—develop their literacy skills through explicit, systematic instruction in activities that include guided practice.



Flexible Fit Into Existing Curriculum



Student-Driven Learning

Students learn and practice with the online student program during classroom center rotations, in the computer lab, or at home.



Small-Group Instruction

Teachers deliver targeted skills-based instruction with offline Lexia Lessons.



Collaborative or Independent Practice

Students extend their learning in center rotations—either independently or with a partner—through the reading, writing, speaking, and listening activities in Lexia Skill Builders and Lexia® Connections.



Tiers I, II, & III



Homeroom / Advisory



Computer Lab



Classroom Center Rotations



Summer School



At-Home / Remote Learning



Before / After School

Personalized and Scalable Partnerships

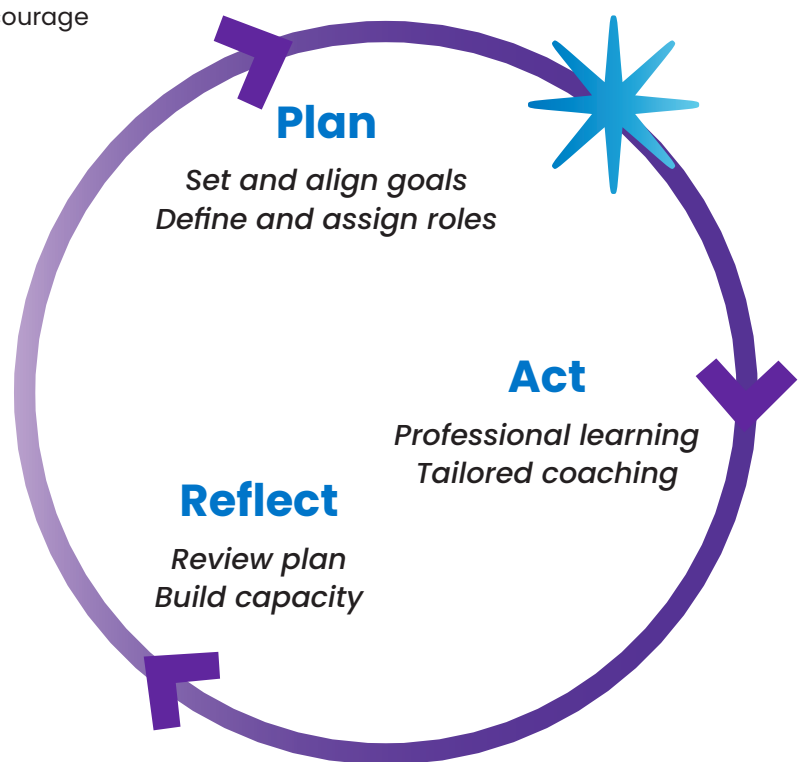
What Makes Lexia’s Partnerships Unique?

Personalized—Every student, class, school, and district is unique. Lexia customizes each partnership so educators and administrators feel confident that all aspects of their professional learning goals are accounted for and modified as needed.

Engaging—Lexia partnerships create an environment of engagement, participation, and support. Every interaction is thoughtfully designed to encourage active learning.

Effective—Grounded in research best practices, Lexia partnerships deliver the student outcomes educators expect and demand across classes, schools, and districts.

Relevant—Lexia focuses on the most meaningful components of professional learning to seamlessly support educators and administrators in their unique learning environment, whether in school or in a remote learning plan.



Lexia’s Partnerships Are Proven

Students using Core5 in schools with sitewide Success Partnerships and who use the program with fidelity are five times more likely to reach their end-of-year, grade-level benchmarks in the program as compared to students using the program a minimal amount (20 minutes per week).

In schools whose student population could be classified as “high-risk” (more than half of the students began the year working on skills more than two years below grade level), an analysis found **41% of students achieved implementation fidelity** when their school had an Implementation Success Partnership, compared to only **27% of students in schools that did not have one**.

Lexia®

a cambium company

Lexia®, a Cambium Learning® Group brand, is transforming literacy education, driving change in 1 of every 3 school districts across the United States. For more than 40 years, Lexia has been a thought leader in literacy education, delivering award-winning, research-based solutions grounded in the science of reading. With a full spectrum of offerings, including professional learning, curriculum, and embedded assessment tools, Lexia provides educators with Structured Literacy solutions that are proven effective and designed to drive meaningful literacy outcomes. By empowering educators with unparalleled ease of use and the knowledge and tools they need, Lexia helps more students unlock their potential to read, write, and speak with confidence.



[lexialearning.com](https://www.lexialearning.com)

© 2025 Lexia, a Cambium Learning Group Brand. Lexia Aspire® Professional Learning, and other trademarks, names, and logos used herein are the property of Lexia and/or its subsidiaries, and are registered and/or used in the United States and other countries. Additional trademarks included herein are the property of their respective owners. All rights reserved.