

Mobile Crane/Grue mobile **LTM 1110-5.1**

Prepared for every task



125 USt



197 ft



217 ft

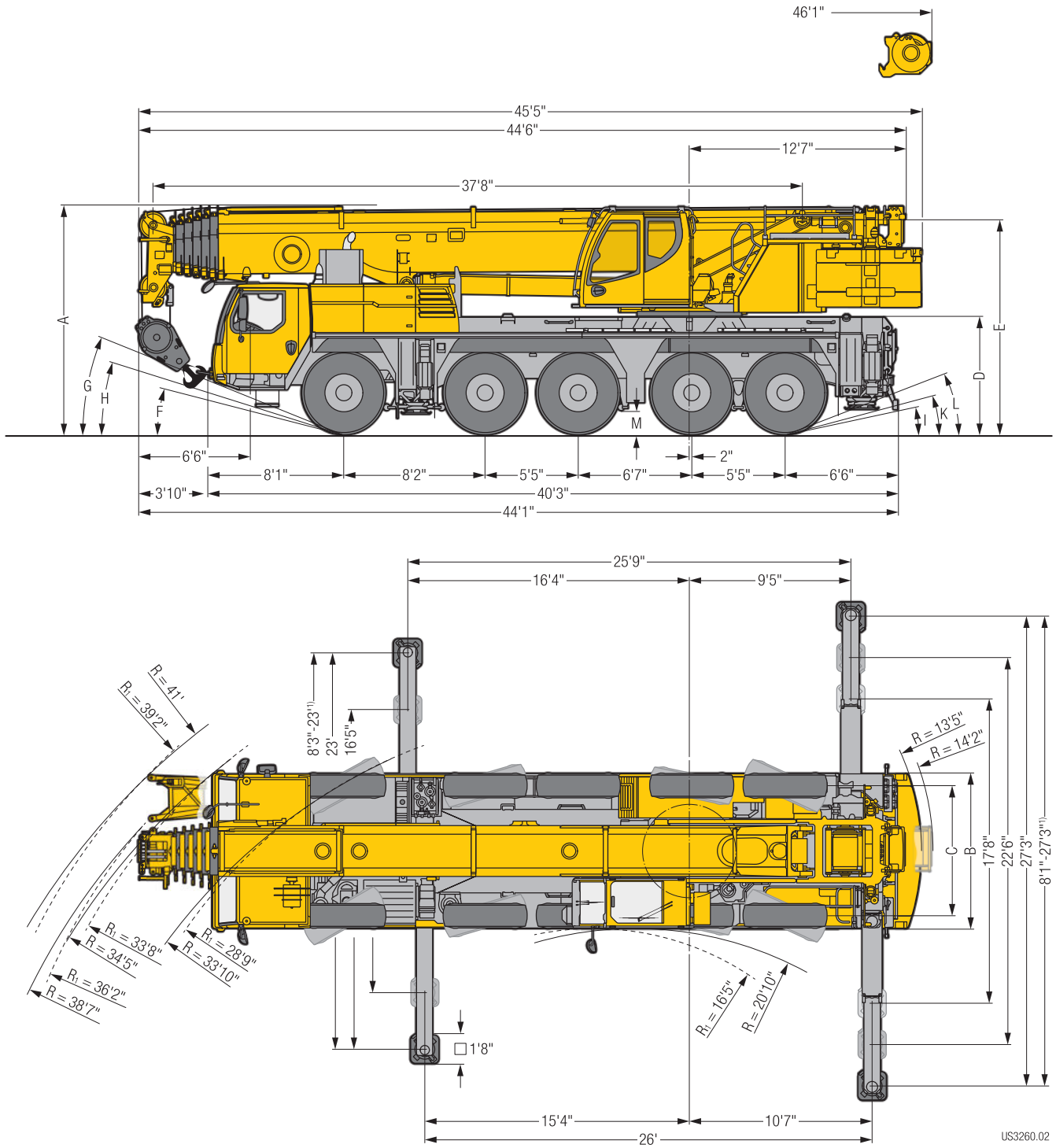


299 ft



LIEBHERR

Dimensions Encombrement



US3260.02

R_i = All-wheel steering · Direction toutes roues

¹⁾ only with VarioBase® · seulement avec VarioBase®

Dimensions/Encombrement

	A	A 5"*	B	C	D	E	F	G	H	I	K	L	M
445/95 R 25 (16.00 R 25)	13'1"	12'9"	9'	7'7"	6'9"	12'4"	14°	23°	17°	12°	15°	21°	385
525/80 R 25 (20.5 R 25)	13'1"	12'9"	9'4"	7'7"	6'9"	12'4"	14°	23°	17°	12°	15°	21°	385

* lowered · abaissé

Weights Poids



Hook block/Moufles à crochet

181,200 lb	7	12	2,750 lb
167,300 lb	5	10	2,000 lb
109,550 lb	3	7	1,550 lb
48,500 lb	1	3	1,000 lb
16,300 lb	–	1	550 lb

Working speeds Vitesses

Crane carrier/Châssis porteur

	min. MMH.	max. MAK.	%
445/95 R 25 (16.00 R 25) 525/80 R 25 (20.5 R 25)	0.3	53	56,5 %

Theoretical gradeability/Aptitude théorique en pente

	12 / R2
	4 / R2

Crane superstructure/Partie tournante

	max			F
	0 – 410 ft/min single line ft/min au brin simple	0.74"	820 ft	16,635 lb
	0 – 410 ft/min single line ft/min au brin simple	0.74"	820 ft	16,635 lb
	0 – 1,5 rpm			
	approx. 45 seconds to reach 83° boom angle env. 45 s jusqu'à 83°			
	approx. 419 seconds for boom extension from 38 ft – 197 ft env. 419 s pour passer de 38 ft – 197 ft			

Lifting capacities

Forces de levage

T



85%

	38	50	62	74	87	99	111	123	127	135	139	148	154	160	168	172	178	182	184	191	193	195	197				
	ft																										
10	242.5	153.2	150.2	148.5	146.5	128.6																			10		
11	239.7	153.2	151	149.2	147.1	131.8																				11	
12	194.7	153.2	151.4	150	147.5	132.8																				12	
13	183.8	153.2	151.8	150.8	146.9	132.9	111.4																			13	
14	177.1	153.2	152.2	151.7	146.9	132.6	111.9																			14	
15	170.9	153.2	152.1	151.3	147.5	131.9	111.6	90.1																		15	
16	165	149.6	148.5	147.6	145.7	131.4	111.3	90.4																		16	
17	159.5	142.5	141.2	140.3	139.3	130.6	110.6	90.3	71																	17	
18	154.3	134.9	133.7	132.6	132.2	128.3	109.4	90	70.8																	18	
19	149.4	127.8	126.5	125.7	125.6	122.6	107.9	89.3	70.2	62																19	
20	144.7	121.2	121.9	122.1	119.1	116.9	105.6	88.5	69.6	61.3	56.4															20	
22	132.2	109	110.2	111.5	111.4	108.1	100.4	86.9	67.7	59.9	55.6	51.3	45													22	
24	119.5	98.7	100.5	101.3	101.5	99.1	95.1	83.9	66	58.6	54.6	50.3	44.7	40.1												24	
26	108.4	89.9	91.8	92.6	92.8	91.8	89	80.4	64.1	57.1	53.6	49.3	44.1	39.9	36.9											26	
28	99.4	82.4	84.3	85.1	85.3	85.9	83.6	76.9	62.2	55.7	52.6	48.2	43.5	39.7	36.8	25.5	29									28	
30	85.4	76	78.2	78.6	79.5	79.8	77.8	73.6	60.3	54	51.5	47.1	42.7	39.3	36.6	25.3	29.1	23.8	22.2	23.5						30	
32			72.5	72.8	74.1	73.9	72.7	69.9	58.2	52	50.3	46	42	38.9	36.3	25.1	29	23.7	22.1	23.5	21.1	20.1	19.6	19		32	
34			67.2	67.6	68.9	68.8	67.8	65.6	56.2	50.1	49.1	44.9	41.1	38.3	36	24.8	28.9	23.5	22	23.4	21	20	19.4	18.9		34	
36			62.5	62.8	64.1	64.1	63.4	61.5	54.3	48.2	47.8	43.7	40.2	37.7	35.5	24.5	28.7	23.2	21.8	23.2	20.9	19.9	19.3	18.9		36	
38			58.3	59.7	60	59.9	59.3	57.4	52.5	46.4	46.4	42.7	39.3	36.9	35	24.1	28.5	23	21.6	23.1	20.7	19.8	19.2	18.8		38	
40			54.3	55.8	56.1	56	55.3	53.9	50.4	44.9	45.1	41.5	38.4	36	34.4	23.7	28.2	22.7	21.4	22.9	20.6	19.7	19.1	18.7		40	
45				47.3	47.7	47.5	46.9	46.2	44.6	41.3	42	38.7	36	33.5	32.6	22.5	27.4	21.9	20.9	22.3	20.1	19.3	18.8	18.4		45	
50				40.7	41.1	40.9	40.3	39.6	40.3	37.7	38.3	36	33.6	31.1	30.5	21.2	26.4	21	20.2	21.6	19.6	18.9	18.4	18		50	
55				35.6	35.9	35.6	35	36	35.2	34.3	33.9	33	31.3	29.1	28.5	20	25.1	20.1	19.3	20.9	19	18.4	18	17.6		55	
60					32	31.3	31.8	31.8	30.9	30.5	29.9	29.3	28.9	27	26.7	18.9	23.7	19.2	18.4	20	18.4	17.8	17.5	17.2		60	
65					28.4	27.8	28.7	28.2	27.2	26.7	27.1	25.7	26.3	24.9	24.9	17.8	22.3	18.4	17.6	19.1	17.7	17.1	16.8	16.5		65	
70						25.5	25.7	25.1	24.3	23.5	24.2	22.5	23.6	22.4	22.5	16.8	21	17.5	16.7	18.3	17	16.4	16.1	15.7		70	
75						23.4	23.1	22.4	22.4	20.7	21.8	19.8	20.9	19.7	20.6	15.8	19.6	16.6	15.9	17.4	16.3	15.7	15.3	14.9		75	
80							20.8	20	20.1	18.4	19.4	17.5	19.2	17.4	18.6	14.9	17.9	15.7	15	16.6	15.6	15	14.6	14.1		80	
85							18.8	18.1	18.1	16.4	17.6	15.4	17.4	15.4	16.6	14.1	15.9	15	14.3	15.6	14.9	14.3	13.9	13.3		85	
90							17.2	17.2	16.3	14.6	16.5	13.7	15.7	13.6	14.8	13.4	14.9	14.3	13.6	14.1	14	13.6	13.2	12.5		90	
95								15.8	14.7	13.5	15	12.1	14.1	12.9	13.9	12.7	13.5	13.4	12.9	12.6	12.7	12.7	12.4	11.8		95	
100								14.5	13.7	12.8	13.6	11.2	12.7	12.2	12.7	12	12.1	12.2	12.1	11.3	11.4	11.3	11.2	11		100	
105									13	12.2	12.4	10.6	12	11.6	11.5	11.3	10.9	10.9	10.8	10.1	10.2	10.1	10	10		105	
110									12	11.7	11.3	10.1	10.9	11	10.3	10.4	9.8	9.9	9.8	9.2	9.3	9.2	9.2	9.1		110	
115									11.1	11.1	10.3	9.6	10	10.2	9.5	9.5	9	9.1	9	8.4	8.4	8.4	8.4	8.3		115	
120										10.3	9.5	9.2	9.3	9.4	8.8	8.8	8.3	8.4	8.3	7.6	7.7	7.7	7.6	7.5		120	
125											8.9	8.9	8.6	8.7	8.1	8.1	7.6	7.7	7.6	7	7.1	7	7	6.9		125	
130												8.5	8	8.1	7.5	7.5	7	7.1	7	6.4	6.5	6.4	6.3			130	
135													7.5	7.6	6.9	7	6.4	6.5	6.4	5.8	5.9	5.9	5.8	5.7		135	
140														7.1	6.4	6.5	5.9	6	5.9	5.3	5.4	5.4	5.3	5.2		140	
145															6.6	6	6	5.5	5.5	4.8	4.9	4.9	4.8	4.8		145	
150																5.6	5.6	5.1	5.1	5	4.4	4.5	4.4	4.3		150	
155																	5.2	4.7	4.7	4.6	4	4.1	4.1	4	3.9		155
160																		4.9	4.3	4.4	4.3	3.6	3.7	3.6	3.5		160
165																			2.8	4	3.9	3.2	3.3	3.2		165	
170																				3.6	3.5	2.8	2.9	2.9	2.8		170
175																					3.2	2.4	2.5	2.5	2.4		175
180																						2.2	2.2	2	1.6		180

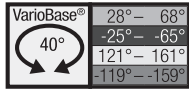
* ± 0° over rear - en arriere

t_197_001_19001_00_000 / 12001_00_000

Lifting capacities

Forces de levage

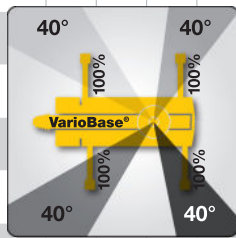
T



85%



	38	50	62	74	87	99	111	123	127	135	139	148	154	160	168	172	178	182	184	191	193	195	197			
	ft																									
10	153.2	150.1	148.6	146.6	128.5																				10	
11	153.2	151	149.3	147	131.8																				11	
12	153.2	151.5	149.9	147.5	132.7																				12	
13	153.2	151.7	150.8	147	132.9	111.3																			13	
14	153.2	152.1	151.7	146.8	132.5	111.8																			14	
15	153.2	152.6	151.2	147.5	131.8	111.6	90.2																		15	
16	149.3	148.1	147	145.1	131.4	111.3	90.4																		16	
17	142.4	141.1	139.8	137.8	130.5	110.7	90.2	71																	17	
18	135.6	134	133.4	131.4	128.3	109.3	89.9	70.8																	18	
19	128.5	127.6	126.5	125	122.1	107.8	89.5	70.1	62.2																19	
20	121.9	123.2	123.7	118.8	116.6	105.6	88.4	69.4	61.3	56.4															20	
22	109.1	110.7	112.2	110.9	107.4	100.3	87.1	67.7	60	55.6	51.4	45													22	
24	99	100.8	101.6	101.4	98.5	94.8	84	65.9	58.6	54.7	50.5	44.8	40.1												24	
26	89.9	91.9	92.8	92.8	91.7	89.3	80.2	64.2	57.1	53.6	49.4	44.1	39.9	36.8											26	
28	82.2	84.2	85.3	85.3	85.3	82.7	76.7	62.2	55.6	52.7	48.3	43.4	39.7	36.8	25.6	29.1									28	
30	75.8	78.5	78.7	80	79.4	76.9	73.4	60.2	54	51.6	47.2	42.8	39.2	36.6	25.4	29.1	23.8	22.3	23.6						30	
32		72.5	72.8	74.1	73.9	71.9	69.2	58.4	52	50.3	46.1	41.9	38.8	36.4	25.1	28.9	23.6	22	23.6	21.2	20.1	19.6	19		32	
34		67.5	67.7	69	69	66.8	64.6	56.2	50	48.9	44.8	41.2	38.4	35.9	24.9	28.9	23.6	22	23.4	20.9	20.1	19.4	19		34	
36		62.8	63.1	64.6	64.4	62.4	60.2	54.5	48.1	47.8	43.7	40.3	37.7	35.5	24.5	28.7	23.1	21.8	23.1	20.9	19.8	19.4	19		36	
38		58.4	59.7	60.2	60	58.6	56.7	52.5	46.5	46.5	42.8	39.2	36.8	35.1	24	28.4	22.9	21.6	23.1	20.7	19.8	19.2	18.7		38	
40		54.5	55.6	56.2	56	55.3	53.1	50.9	45	45	41.4	38.4	35.9	34.4	23.8	28.2	22.7	21.4	22.9	20.5	19.6	19.2	18.7		40	
45			47.8	48.3	48.3	47.4	45.9	44.5	41.2	42.1	38.6	35.9	33.5	32.6	22.5	27.3	21.8	20.9	22.3	20.1	19.4	18.7	18.3		45	
50			41.2	41.9	41.7	41	39.7	40.1	37.7	38.4	35.9	33.7	31.1	30.4	21.2	26.5	20.9	20.3	21.6	19.6	19	18.5	18.1		50	
55			36.4	36.8	36.6	35.9	36.2	35.3	34.4	33.7	33.1	31.3	29.1	28.4	20.1	25.1	20.1	19.4	20.9	19	18.3	17.9	17.6		55	
60				33.1	32.4	32	32.2	31.3	30.4	30	29.5	28.9	26.9	26.7	19	23.6	19.2	18.5	20.1	18.3	17.9	17.4	17.2		60	
65				29.5	28.9	29.3	28.7	27.8	27.1	27.3	26.2	26.2	25.1	24.9	17.9	22.3	18.3	17.6	19.2	17.6	17	16.8	16.5		65	
70					26	26.7	25.8	24.9	24.3	24.9	23.4	24.5	22.9	23.1	16.8	20.9	17.4	16.8	18.3	17	16.3	16.1	15.7		70	
75					24	24	23.4	22.7	21.6	22.3	20.9	21.6	20.5	20.7	15.7	19.6	16.8	15.9	17.4	16.3	15.7	15.4	15		75	
80						21.8	20.9	20.9	19.4	20.3	19	19.6	18.5	19.6	15	18.5	15.7	15	16.5	15.7	15	14.6	14.1		80	
85						20.1	19.2	19.2	17.6	18.3	17.2	18.3	16.8	17.9	14.1	17	15	14.3	15.7	15	14.3	13.9	13.2		85	
90						18.5	17.6	17.6	16.1	16.8	15.4	16.8	15.2	16.3	13.4	15.2	14.3	13.7	15	14.1	13.7	13.2	12.6		90	
95						16.5	16.1	14.8	15.7	14.1	15.4	13.9	15	12.8	14.6	13.7	13	13.9	13.4	13	12.3	11.7	11.7		95	
100						15.7	15	13.4	14.8	12.8	14.1	12.6	13.7	11.9	13.2	13	12.3	12.8	12.8	12.6	11.7	11		100		
105							13.7	12.3	13.7	11.7	13	11.7	12.6	11.5	12.1	12.3	11.7	11.5	11.7	11.7	11.2	10.6		105		
110							12.8	11.7	12.8	10.6	12.1	11	11.7	10.8	11	11.2	11	10.6	10.6	10.6	10.6	10.1		110		
115							11.9	11.2	11.9	9.7	11	10.4	10.6	10.1	10.1	10.4	10.1	9.7	9.7	9.7	9.7	9.5		115		
120								11	11	9.3	10.4	10.1	9.7	9.7	9.5	9.5	9.5	8.8	9	9	9	8.8		120		
125										10.1	8.8	9.9	9.7	9	9.3	8.6	8.8	8.8	8.2	8.4	8.4	8.2	8.2		125	
130											8.6	9.3	9	8.4	8.6	7.9	8.2	8.2	7.5	7.7	7.7	7.5	7.5		130	
135												8.6	8.4	7.7	7.9	7.5	7.5	7.5	6.8	7.1	7.1	7.1	6.8		135	
140												7.9	7.9	7.3	7.3	6.8	7.1	7.1	6.4	6.4	6.4	6.4	6.4		140	
145													7.3	6.8	6.8	6.4	6.4	6.4	5.7	6	6	5.7	5.7		145	
150														6.4	6.4	6	6.2	6	5.3	5.3	5.3	5.3	5.3		150	
155															6	5.3	5.5	5.5	4.9	4.9	4.9	4.9	4.6		155	
160																5.5	4.9	5.1	5.1	4.4	4.4	4.4	4.4		160	
165																	2.9	4.6	4.6	4	4	4	4		165	
170																		4.2	4.2	3.7	3.7	3.7	3.5		170	
175																			3.7	3.3	3.3	3.3	2.9		175	
180																					2.9	2.4	2	1.5		180



+6%

LTM_1110-5.1_Multi_0

Lifting capacities

Forces de levage

T



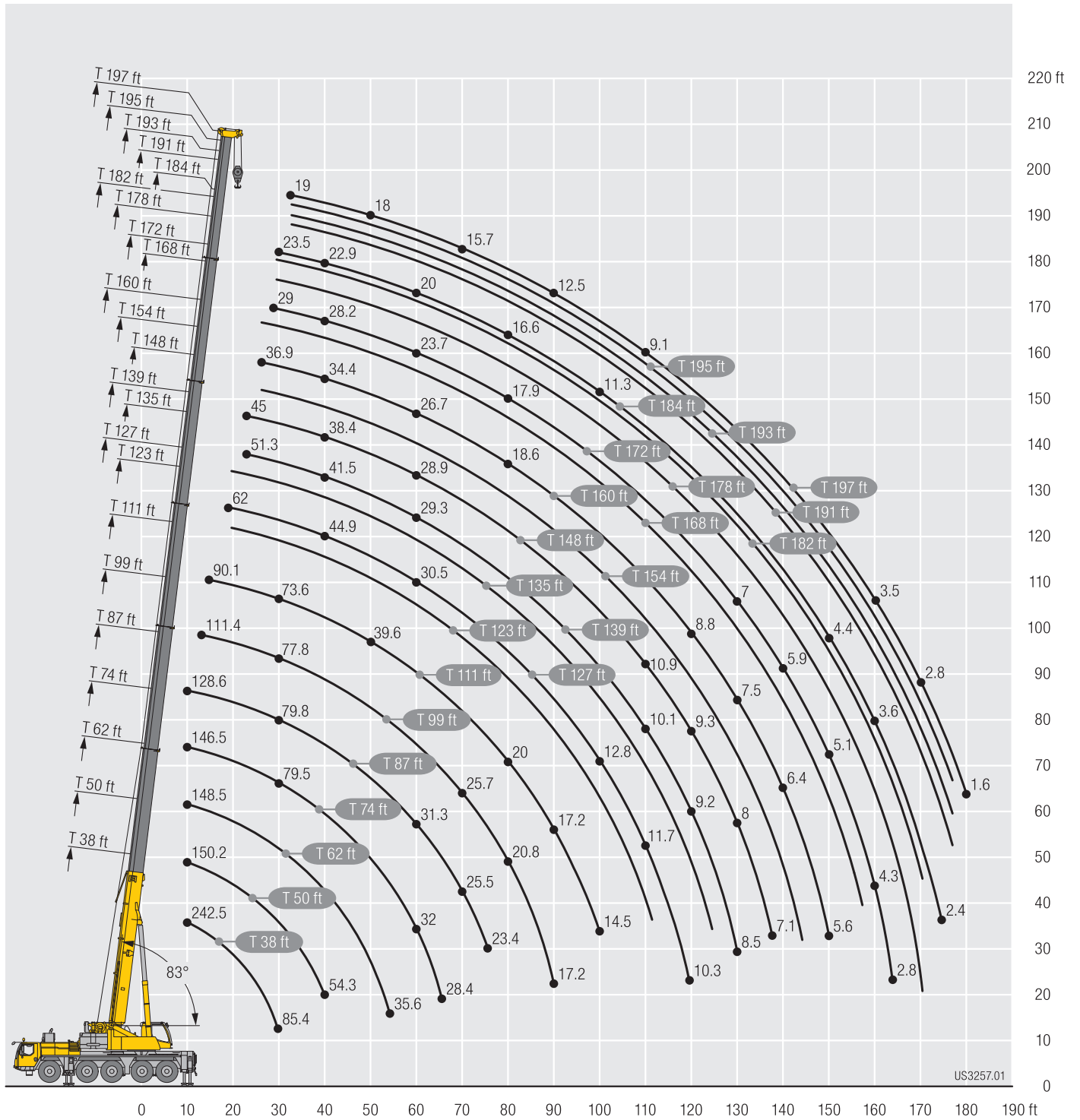
85%

	38	50	62	74	87	99	111	123	127	135	139	148	154	160	168	172	178	182	184	191	193	195	197		
	ft																								
10	153.2	150.2	148.5	146.5	128.6																				10
11	153.2	151	149.2	147.1	131.8																				11
12	153.2	151.4	150	147.5	132.8																				12
13	153.2	151.8	150.8	146.9	132.9	111.4																			13
14	152.1	151.5	150	144.7	131.6	111.9																			14
15	144.7	142.5	140.5	138	130.8	111.3	90.1																		15
16	134.8	133.4	131.5	129.5	121.7	110.3	90.4																		16
17	126	124.5	123.4	120.6	114.5	107.5	90.2	71																	17
18	118.2	118.7	119.8	115.9	110.5	102.7	89.8	70.8																	18
19	111.2	112.4	113.7	107.7	103	95.8	87	70.2	62																19
20	104.8	106.3	106.9	102.5	96.3	89.9	83.5	69.6	61.3	56.4															20
22	93	95.6	93.1	90	84.9	79.6	74.4	67.7	59.9	55.6	51.3	45													22
24	82.2	85.2	84	80.2	75.7	71.1	66.7	63.1	58.6	54.6	50.3	44.7	40.1												24
26	73	75.9	75.1	72	68.2	64.2	60.3	58.1	56.6	53.3	49.3	44.1	39.9	36.9											26
28	65.3	68.2	67.7	65.1	62	58.3	56.1	54	52.6	50.8	48.2	43.5	39.7	36.8	25.5	29									28
30	58.1	61.5	61.5	59.3	56.5	53.3	52.8	49.6	48.3	46.6	45.3	42.7	39.3	36.6	25.3	29.1	23.8	22.2	23.5						30
32		55	56.3	54.3	51.7	50.1	48.6	45.7	44.5	43.6	42	40.9	38.7	36.3	25.1	29	23.7	22.1	23.5	21.1	20.1	19.6	19		32
34		49.4	51.3	50.6	47.8	47.4	45	42.3	41.1	41.2	38.8	38.5	37.3	35.8	24.8	28.9	23.5	22	23.4	21	20	19.4	18.9		34
36		44.7	46.6	46.8	44.3	44.1	41.9	40.4	38.2	38.4	36	36.9	34.8	34.8	24.5	28.7	23.2	21.8	23.2	20.9	19.9	19.3	18.9		36
38		40.7	42.5	43.5	41.8	41.1	39	38.1	35.5	35.8	33.4	34.4	32.4	32.4	24.1	28.5	23	21.6	23.1	20.7	19.8	19.2	18.8		38
40		37.3	39	40	40	38.3	36.5	35.7	33.2	33.8	31.2	32.8	30.2	31.1	23.7	28.2	22.7	21.4	22.9	20.6	19.7	19.1	18.7		40
45			32	33	33.4	32.7	31	30.6	28.2	29.9	26.4	28.5	25.6	26.9	22.5	25.4	21.9	20.9	22.3	20.1	19.3	18.8	18.4		45
50			26.7	28.1	28	27.5	27.4	26.4	24.2	26.3	22.7	24.7	22.5	23.5	21.2	22.7	21	20.2	20.9	19.6	18.9	18.4	18		50
55			22.7	23.9	23.8	23.9	23.7	23.6	22.2	22.7	20.9	21.9	21.1	21.1	19.9	19.7	19.5	19	18.2	17.9	17.7	17.5	17.3		55
60				20.5	20.4	20.8	20.4	20.3	20.3	19.5	19.2	19.1	19.3	18.3	18.1	17.2	17.1	16.7	15.7	15.6	15.4	15.2	15		60
65				17.8	17.7	18.1	17.7	17.5	17.7	16.8	17	16.4	16.6	15.7	15.7	14.9	14.8	14.6	13.7	13.6	13.5	13.3	13		65
70					15.4	15.8	15.4	15.3	15.3	14.5	14.7	14.1	14.3	13.4	13.4	12.7	12.7	12.6	11.7	11.7	11.7	11.5	11.4		70
75					13.4	13.7	13.3	13.2	13.3	12.5	12.7	12.1	12.3	11.5	11.5	10.8	10.8	10.7	10	9.9	9.9	9.9	9.8		75
80						12	11.6	11.5	11.6	10.8	11	10.5	10.7	9.9	9.9	9.3	9.4	9.3	8.6	8.6	8.6	8.5	8.4		80
85						10.6	10.2	10.1	10.1	9.5	9.7	9.2	9.4	8.7	8.7	8.1	8.2	8.1	7.4	7.5	7.5	7.4	7.3		85
90						9.5	9.1	9	9.1	8.4	8.6	8.2	8.3	7.7	7.7	7.1	7.2	7.1	6.4	6.5	6.5	6.4	6.3		90
95							8.2	8.1	8.2	7.5	7.7	7.3	7.4	6.8	6.8	6.3	6.3	6.3	5.6	5.7	5.6	5.6	5.5		95
100							7.5	7.3	7.4	6.7	6.9	6.5	6.7	6	6	5.5	5.6	5.5	4.8	4.9	4.9	4.8	4.7		100
105								6.6	6.7	6	6.2	5.8	6	5.3	5.3	4.8	4.9	4.8	4.1	4.2	4.2	4.1	4		105
110								6	6.1	5.4	5.6	5.1	5.3	4.7	4.7	4.2	4.3	4.2	3.5	3.6	3.6	3.5	3.4		110
115								5.5	5.5	4.9	5	4.6	4.7	4.1	4.2	3.6	3.7	3.6	3	3.1	3	3	2.8		115
120									5.1	4.4	4.5	4.1	4.2	3.6	3.7	3.1	3.2	3.1	2.4	2.5	2.5	2.4	2.2		120
125										4	4.1	3.7	3.8	3.1	3.2	2.7	2.7	2.7	1.8	1.9	1.9	1.7	1.5		125
130											3.7	3.2	3.4	2.7	2.8	2.2	2.3	2.2							130
135												2.8	3	2.2	2.4	1.6	1.8	1.7							135
140													2.4	2.5	1.8	1.9									140
145														2.1											145

t_197_001_12052_00_000

Lifting heights Hauteurs de levage

T



Lifting capacities

Forces de levage

TK



	38 ft			111 ft			115 ft			117 ft			123 ft			130 ft			135 ft			142 ft			
	K 35 ft									0°	20°	40°	0°	20°	40°	0°	20°	40°	0°	20°	40°	0°	20°	40°	
	0°	20°	40°	0°	20°	40°	0°	20°	40°																
10	32.5																							10	
11	32.5																							11	
12	32.5																							12	
13	32.5																							13	
14	32.5																							14	
15	32.5																							15	
16	32.5	32.5																						16	
17	32.5	32.5																						17	
18	32.5	32.5																						18	
19	32.5	32.5																						19	
20	32.5	32.5		32.5																				20	
22	32.5	32.5		32.5																				22	
24	32.5	32.3	23.7	32.5			22.2			21.6			32.5											24	
26	32.5	31.4	22.8	32.5			21.9			21.3			32.5			19.7			30.4					26	
28	32.1	29.9	22	32.5			21.4			20.9			32.5			19.5			30.4			17.5		28	
30	30.9	28.4	21.2	32.5	32.5		21			20.5			32.5			19.2			30.4			17.3		30	
32	29.5	26.8	20.6	32.5	32.1		20.5			20.1			32.5			18.9			30.3			17.1		32	
34	28.1	25.5	20	32.5	31.4		19.9	17.9		19.6	17.7		32.5	30.9		18.6			30.1			16.9		34	
36	26.6	24.4	19.4	32.5	30.6		19.4	17.3		19	17.1		32.5	30.5		18.2	16.7		29.9	27.5		16.7		36	
38	24.9	23.4	18.8	32.5	29.8	21	18.8	16.8		18.5	16.6		32.5	30		17.8	16.3		29.7	27.2		16.4	14.8	38	
40	23.3	22.5	18.3	32.4	29	20.6	18.2	16.2		18	16.1		32.5	29.6		17.4	15.8		29.5	26.9		16.1	14.5	40	
45	20.1	20.3	17.3	31.6	27.3	19.9	16.9	15	13.8	16.7	14.9	13.7	32.5	28.3	20.3	16.3	14.8	13.4	28.5	26.2	20	15.3	13.8	45	
50	17.5	18.7	16.4	30.6	25.8	19.2	15.7	13.9	12.9	15.4	13.9	12.8	31.2	26.8	19.6	15.3	13.8	12.6	27.3	25.5	19.4	14.5	13.1	12.2	50
55	15.3	17.3	15.9	29.6	24.5	18.6	14.6	13	12.1	14.2	12.9	12	29.6	25.4	19	14.3	12.9	11.9	25.8	24.7	18.8	13.8	12.3	11.6	55
60	13.6	16.1	15.7	28.2	23.4	18.1	13.4	12.2	11.4	13	12.1	11.3	27.9	24.3	18.5	13.3	12.1	11.2	24.1	23.6	18.3	13	11.7	11	60
65	12.1	15.5		26.1	22.2	17.6	12.4	11.4	10.8	11.9	11.4	10.7	25.4	23.2	18	12.3	11.5	10.6	22.5	22.2	17.9	12.2	11.1	10.4	65
70				23.8	21.2	17.2	11.4	10.7	10.2	11	10.6	10.2	22.7	22.2	17.6	11.4	10.8	10.1	20.8	20.9	17.4	11.4	10.6	10	70
75				21.2	20.3	16.8	10.7	10	9.7	10.2	10	9.7	20.1	20.7	17.1	10.6	10.2	9.8	18.8	19.5	17.1	10.7	10.1	9.6	75
80				18.8	19.5	16.4	10	9.5	9.2	9.6	9.4	9.2	17.7	19	16.7	9.9	9.6	9.3	17.2	17.8	16.8	10	9.6	9.3	80
85				16.8	17.8	16.2	9.3	9.1	8.8	9	8.9	8.8	15.7	16.8	16.3	9.4	9.2	9	15.4	15.8	16.3	9.5	9.1	8.9	85
90				15	15.9	15.9	8.8	8.7	8.5	8.5	8.4	8.4	14.3	14.9	15.5	8.9	8.7	8.6	13.7	14.6	14.8	9	8.7	8.6	90
95				13.4	14.2	14.7	8.3	8.2	8.2	8	7.9	8	12.8	13.6	13.9	8.4	8.3	8.2	12.2	13.1	13.7	8.6	8.3	8.3	95
100				12	12.7	13.1	7.9	7.8	7.8	7.6	7.5	7.6	11.3	12.1	12.7	8	7.9	7.9	11.4	11.6	12.2	8.2	8	7.9	100
105				10.7	11.3	11.7	7.5	7.4	7.5	7.2	7.2	7.2	10.4	10.8	11.3	7.6	7.5	7.5	10.3	10.6	10.8	7.8	7.7	7.6	105
110				9.7	10.1	10.4	7.1	7.1	7.1	6.8	6.8	6.9	9.8	9.7	10.1	7.3	7.2	7.2	9.3	9.8	10	7.4	7.3	7.4	110
115				8.8	9.2	9.4	6.8	6.7	6.8	6.5	6.5	6.6	9.1	9.3	9.3	7	6.9	6.9	8.5	9	9.3	7	7	7	115
120				8.1	8.4	8.6	6.4	6.4	6.5	6.2	6.2	6.2	8.3	8.7	8.9	6.6	6.6	6.6	8.1	8.2	8.5	6.7	6.7	6.8	120
125				7.4	7.7	7.8	6.1	6.1	6.2	5.9	5.9	6	7.6	8	8.1	6.4	6.3	6.4	7.7	7.7	7.8	6.4	6.4	6.5	125
130				6.8	7	7	5.9	5.9	6	5.6	5.6	5.7	7	7.3	7.4	6.1	6.1	6.1	7.3	7.4	7.4	6.1	6.1	6.2	130
135				6.3	6.4		5.7	5.7	5.8	5.3	5.4	5.5	6.6	6.7	6.8	5.9	5.9	5.9	7	6.9	7	5.8	5.8	5.9	135
140							5.5	5.5		5.1	5.2	5.3	6.4	6.3	6.5	5.6	5.6	5.7	6.6	6.7	6.7	5.5	5.6	5.6	140
145										5			6.1	6.2	6	5.4	5.4	5.5	6.1	6.3	6.4	5.3	5.3	5.4	145
150													6	6.1		5.2	5.3	5.3	5.6	5.8	5.9	5.1	5.1	5.1	150
155																5.1	5.1		5.2	5.3	5.4	4.8	4.9	4.9	155
160																			4.9	4.9		4.6	4.7	4.8	160
165																						4.5	4.5		165
170																						3.1			170

t_197_002_00001_00_000

Lifting capacities

Forces de levage

TK



	144 ft			148 ft			154 ft			156 ft			160 ft			166 ft			168 ft			170 ft				
	0°	20°	40°	0°	20°	40°	0°	20°	40°	K 35 ft			0°	20°	40°	0°	20°	40°	0°	20°	40°	0°	20°	40°		
28	17			24.5																					28	
30	16.9			24.5			14.8			14.3			14.9			13.1									30	
32	16.7			24.5			14.7			14.3			19.8			13.1			12.7					12.3	32	
34	16.5			24.4			14.7			14.3			19.8			13.1			12.7					12.4	34	
36	16.3			24.4			14.5			14.1			19.8			13.1			12.7					12.4	36	
38	16.1	14.5		24.3			14.4			14			19.8			13			12.6					12.3	38	
40	15.8	14.3		24.1	22.6		14.2	13.8		13.9			19.6			12.9			12.6					12.3	40	
45	15.1	13.6		23.6	22.2		13.8	13.2		13.5	12.9		19.3	18.1		12.7	12.3		12.3	12			12	11.8	45	
50	14.3	12.9	12.1	23	21.9	19	13.3	12.7	11.9	13	12.4	11.8	18.9	17.7		12.3	11.9		12	11.6			11.8	11.4	50	
55	13.6	12.2	11.5	22.2	21.2	18.4	12.7	12.1	11.4	12.5	11.9	11.2	18.4	17.6	17.3	11.9	11.4	11	11.6	11.2	10.9		11.1	11	10.8	55
60	12.8	11.6	10.9	21.1	20.2	18	12.2	11.5	10.8	11.9	11.4	10.7	17.8	17.1	16.7	11.5	11	10.5	11.3	10.8	10.4		11.1	10.6	10.3	60
65	12	11	10.4	19.9	19.2	17.6	11.6	10.9	10.3	11.4	10.8	10.2	17	16.3	15.9	11.1	10.5	10.1	10.8	10.4	10		10.7	10.3	9.9	65
70	11.2	10.5	9.9	18.7	18.2	17.2	11.1	10.4	9.9	10.9	10.3	9.9	16.2	15.5	15.2	10.6	10.1	9.8	10.4	10	9.7		10.3	9.9	9.6	70
75	10.4	10	9.6	17.5	17.2	16.7	10.5	10	9.6	10.3	9.9	9.5	15.4	14.8	14.4	10.2	9.8	9.4	10	9.7	9.4		9.9	9.6	9.3	75
80	9.8	9.5	9.2	16.2	16.2	16	9.9	9.6	9.2	9.8	9.5	9.2	14.6	14.1	13.8	9.8	9.4	9.1	9.6	9.3	9.1		9.5	9.3	9	80
85	9.3	9.1	8.9	14.5	15.2	15.2	9.5	9.2	8.9	9.3	9.1	8.9	13.8	13.4	13.2	9.4	9.1	8.9	9.2	9	8.8		9.1	8.9	8.8	85
90	8.8	8.7	8.6	13.2	13.9	14.4	9.1	8.8	8.6	8.9	8.8	8.6	12.7	12.8	12.6	9	8.7	8.6	8.8	8.6	8.5		8.7	8.6	8.5	90
95	8.3	8.3	8.3	12.1	12.2	13.1	8.7	8.4	8.3	8.4	8.4	8.3	11.4	12.1	12	8.6	8.4	8.3	8.4	8.3	8.3		8.4	8.3	8.2	95
100	7.9	7.9	7.9	10.8	11.4	11.5	8.3	8.1	8	8.1	8	8	10.3	10.9	11.4	8.3	8.1	8	8.1	8	8		8	8	7.9	100
105	7.4	7.5	7.6	9.7	10.4	10.9	8	7.8	7.8	7.7	7.7	7.7	9.8	9.8	10.3	8	7.8	7.7	7.7	7.7	7.7		7.7	7.6	7.7	105
110	7.1	7.1	7.2	9.2	9.4	9.8	7.6	7.5	7.5	7.3	7.3	7.4	9	9.3	9.3	7.7	7.5	7.5	7.4	7.4	7.4		7.4	7.3	7.4	110
115	6.7	6.8	6.8	8.6	8.7	8.9	7.3	7.2	7.2	7	7	7.1	8.2	8.7	8.8	7.4	7.3	7.2	7.1	7.1	7.1		7.1	7.1	7.1	115
120	6.4	6.4	6.5	7.9	8.3	8.3	7	7	7	6.7	6.7	6.8	7.4	7.9	8.3	7.1	7	7	6.8	6.8	6.8		6.8	6.8	6.8	120
125	6.1	6.1	6.2	7.2	7.7	7.9	6.7	6.7	6.7	6.4	6.4	6.5	7.1	7.2	7.7	6.8	6.8	6.8	6.5	6.5	6.6		6.5	6.5	6.6	125
130	5.8	5.9	5.9	6.7	7	7.3	6.4	6.4	6.5	6.1	6.1	6.2	6.8	6.8	7	6.5	6.5	6.6	6.3	6.3	6.3		6.3	6.3	6.3	130
135	5.5	5.6	5.6	6.4	6.4	6.6	6.1	6.2	6.2	5.9	5.9	5.9	6.3	6.6	6.7	6.3	6.3	6.4	6	6	6.1		6	6	6.1	135
140	5.3	5.3	5.4	6.2	6.1	6.2	5.9	5.9	6	5.6	5.6	5.7	5.8	6.1	6.3	5.8	6.1	6.1	5.7	5.8	5.8		5.7	5.8	5.9	140
145	5	5.1	5.1	5.7	5.9	6	5.7	5.7	5.7	5.4	5.4	5.5	5.3	5.6	5.8	5.3	5.7	5.9	5.3	5.5	5.6		5.2	5.5	5.6	145
150	4.8	4.8	4.9	5.3	5.6	5.7	5.4	5.5	5.5	5.2	5.2	5.2	4.9	5.1	5.3	4.9	5.2	5.3	4.8	5.1	5.3		4.8	5.1	5.2	150
155	4.6	4.6	4.7	4.9	5.2	5.2	5	5.2	5.3	4.9	5	5	4.4	4.7	4.8	4.5	4.7	4.9	4.4	4.7	4.8		4.3	4.6	4.8	155
160	4.4	4.4	4.5	4.5	4.7	4.8	4.6	4.8	4.8	4.5	4.7	4.8	4	4.3	4.3	4	4.3	4.4	4	4.3	4.4		3.9	4.2	4.3	160
165	4.2	4.3	4.3	4.1	4.3	4.3	4.2	4.4	4.4	4.1	4.3	4.4	3.5	3.8	3.9	3.6	3.9	4	3.6	3.9	4		3.5	3.8	3.9	165
170	4.1	4.1		3.7	3.9		3.8	4	3.9	3.7	3.9	3.9	3.1	3.3	3.4	3.2	3.4	3.5	3.1	3.4	3.5		3.1	3.3	3.4	170
175				3.4			3.4	3.5	3.4	3.4	3.5	3.4	2.7	2.9	2.9	2.8	3	3	2.8	3	3		2.6	2.9	3	175
180							3.1	3.1		3	3.1		2.4	2.5	2.4	2.4	2.6	2.6	2.4	2.6	2.6		2.3	2.5	2.5	180
185													2.1	2.1		2.1	2.2	2.2	2	2.2	2.2		2	2.1	2.1	185
190																1.8	1.9		1.7	1.8			1.7	1.8	1.7	190
195																			1.5				1.3	1.4		195

L_197_002_00001_00_000

Lifting capacities

Forces de levage

TK



	172 ft			178 ft			182 ft			184 ft			186 ft			191 ft			195 ft			197 ft			
	0°	20°	40°	0°	20°	40°	0°	20°	40°	0°	20°	40°	0°	20°	40°	0°	20°	40°	0°	20°	40°	0°	20°	40°	
32	14.7			11.6			10.9																		32
34	14.7			11.6			10.9			11.6			11.3			10.2			9.6			9.4			34
36	14.7			11.7			10.9			11.6			11.3			10.2			9.6			9.4			36
38	14.7			11.7			11			11.6			11.3			10.2			9.6			9.4			38
40	14.7			11.7			11			11.6			11.3			10.2			9.7			9.4			40
45	14.7	14.6		11.6	11.3		10.9			11.6			11.3			10.3			9.7			9.5			45
50	14.5	14.3		11.4	11.1		10.8	10.4		11.5	11.3		11.3	11		10.2	9.9		9.7	9.5		9.5	9.3		50
55	14.2	14.1	13.8	11.1	10.8	10.6	10.5	10.3		11.4	11.1		11.1	10.8		10.1	9.8		9.6	9.3		9.4	9.1		55
60	13.9	13.7	13.7	10.8	10.4	10.3	10.3	10	10	11.2	10.8	10.4	10.9	10.6	10.3	9.9	9.6	9.7	9.5	9.2	9.2	9.3	9	9	60
65	13.5	13.3	13.2	10.5	10.1	9.9	10.1	9.8	9.7	10.9	10.5	10.1	10.7	10.4	10	9.7	9.5	9.5	9.3	9.1	9.2	9.2	8.9	9	65
70	13	12.7	12.6	10.2	9.8	9.6	9.8	9.5	9.5	10.7	10.2	9.8	10.5	10.1	9.7	9.5	9.3	9.3	9.1	9	9	9	8.9	8.9	70
75	12.5	12.2	12	9.8	9.5	9.3	9.5	9.3	9.2	10.4	9.8	9.5	10.2	9.8	9.4	9.3	9.1	9	9	8.8	8.8	8.8	8.7	8.7	75
80	12	11.6	11.5	9.5	9.2	9.1	9.2	9	8.9	10.1	9.5	9.2	9.9	9.5	9.2	9.1	8.9	8.8	8.8	8.6	8.6	8.6	8.6	8.5	80
85	11.4	11.2	11	9.2	9	8.8	8.9	8.8	8.7	9.7	9.3	9	9.6	9.2	8.9	8.8	8.7	8.6	8.5	8.4	8.4	8.4	8.4	8.3	85
90	10.9	10.7	10.6	8.9	8.7	8.6	8.6	8.5	8.4	9.4	9	8.8	9.3	9	8.7	8.6	8.4	8.4	8.3	8.2	8.2	8.2	8.2	8.1	90
95	10.4	10.2	10.2	8.6	8.4	8.3	8.3	8.2	8.2	9.1	8.8	8.6	9	8.7	8.5	8.3	8.2	8.2	8.1	8	8	7.9	7.9	8	95
100	9.9	9.8	9.8	8.3	8.1	8	8	7.9	7.9	8.7	8.5	8.4	8.7	8.5	8.3	8.1	8	7.9	7.8	7.7	7.8	7.7	7.7	7.8	100
105	9.4	9.4	9.4	8	7.8	7.8	7.7	7.7	7.7	8.4	8.3	8.1	8.4	8.2	8.1	7.9	7.8	7.7	7.6	7.5	7.6	7.5	7.5	7.5	105
110	8.5	8.9	9.1	7.7	7.6	7.5	7.4	7.4	7.4	8.1	8	8	8	8	7.9	7.6	7.5	7.5	7.4	7.3	7.3	7.2	7.2	7.3	110
115	7.9	8.3	8.6	7.5	7.3	7.3	7.1	7.1	7.1	7.7	7.8	7.7	7.6	7.7	7.7	7.4	7.3	7.3	7.1	7	7.1	6.9	7	7.1	115
120	7.6	7.5	7.9	7.2	7.1	7.1	6.9	6.9	6.9	7.1	7.5	7.5	7	7.5	7.5	7.1	7.1	7.1	6.8	6.8	6.9	6.6	6.8	6.8	120
125	7.1	7.3	7.3	6.9	6.9	6.9	6.6	6.6	6.7	6.4	7	7.3	6.3	6.9	7.3	6.5	6.8	6.9	6.4	6.6	6.6	6.3	6.5	6.6	125
130	6.4	6.9	7	6.4	6.7	6.7	6.3	6.4	6.4	5.8	6.3	6.7	5.7	6.2	6.6	5.9	6.4	6.6	5.8	6.2	6.4	5.7	6.1	6.3	130
135	5.9	6.3	6.6	5.9	6.3	6.4	5.8	6.2	6.2	5.2	5.7	6	5.1	5.6	6	5.3	5.8	6.1	5.2	5.7	6	5.1	5.6	5.9	135
140	5.3	5.7	6	5.4	5.8	6	5.2	5.7	5.9	4.7	5.2	5.5	4.6	5.1	5.4	4.7	5.2	5.5	4.7	5.1	5.5	4.6	5	5.4	140
145	4.8	5.2	5.4	4.9	5.2	5.5	4.8	5.1	5.4	4.2	4.6	4.9	4.1	4.6	4.8	4.3	4.7	5	4.2	4.6	4.9	4.1	4.5	4.8	145
150	4.4	4.7	4.9	4.4	4.8	5	4.3	4.7	4.9	3.7	4.2	4.4	3.6	4.1	4.3	3.8	4.2	4.5	3.7	4.1	4.4	3.6	4	4.3	150
155	3.9	4.3	4.4	4	4.3	4.5	3.9	4.2	4.4	3.3	3.7	3.9	3.1	3.6	3.8	3.3	3.8	4	3.3	3.7	3.9	3.2	3.6	3.9	155
160	3.5	3.8	4	3.5	3.9	4.1	3.4	3.8	4	2.8	3.2	3.4	2.7	3.1	3.4	2.9	3.3	3.6	2.8	3.2	3.5	2.7	3.1	3.4	160
165	3	3.3	3.5	3.1	3.4	3.6	3	3.4	3.5	2.3	2.7	2.9	2.2	2.6	2.8	2.4	2.8	3.1	2.3	2.8	3	2.2	2.7	2.9	165
170	2.6	2.9	3	2.7	3	3.1	2.6	2.9	3.1	1.9	2.3	2.5	1.8	2.2	2.4	2	2.4	2.6	1.9	2.3	2.5	1.8	2.2	2.4	170
175	2.2	2.5	2.5	2.3	2.6	2.7	2.2	2.5	2.6	1.5	1.9	2	1.4	1.8	1.9	1.6	2	2.1	1.5	1.9	2.1	1.3	1.8	2	175
180	1.8	2.1	2.1	1.9	2.2	2.2	1.8	2.1	2.2		1.4	1.6			1.4		1.5	1.7		1.5	1.6		1.3	1.6	180
185	1.5	1.7	1.7	1.6	1.8	1.8	1.5	1.7	1.8																185
190		1.3			1.4	1.5		1.4	1.4																190

t_197_002_00001_00_000

Lifting capacities

Forces de levage

TK



	38 ft			111 ft			115 ft			117 ft			123 ft			130 ft			135 ft			142 ft				
	0°	20°	40°	0°	20°	40°	0°	20°	40°	0°	20°	40°	0°	20°	40°	0°	20°	40°	0°	20°	40°	0°	20°	40°		
11	20.6																								11	
12	20.4																									12
13	20.2																									13
14	19.9																									14
15	19.6																									15
16	19.3																									16
17	19																									17
18	18.7																									18
19	18.4																									19
20	18																									20
22	17.3																									22
24	16.7				15.1																					24
26	16				15			11.2			11		14.8													26
28	15.4				15			11.2			11		14.6			10.3			13.4							28
30	14.8	11.3		14.8			11.2			10.9		14.5			10.2			13.3			9.5					30
32	14.2	10.9		14.6			11.1			10.9		14.4			10.2			13.3			9.5					32
34	13.6	10.6		14.4			11.1			10.9		14.3			10.2			13.2			9.4					34
36	13.1	10.3		14.2			11			10.8		14.1			10.2			13.1			9.4					36
38	12.6	10		14			10.9			10.7		14			10.1			13			9.4					38
40	12.1	9.8		13.8			10.9			10.7		13.8			10.1			12.8			9.3					40
45	11	9.3	8.1	13.3	9.9		10.6			10.4		13.3	10		9.9			12.5			9					45
50	10	8.8	7.8	12.7	9.6		10.3	8.8		10.2	8.8	12.8	9.7		9.6	8.7		12.2	9.6		8.7					50
55	9	8.4	7.5	12.2	9.3		10	8.6		9.9	8.6	12.3	9.4		9.4	8.5		11.8	9.3		8.6	8.2				55
60	8.3	8.1	7.3	11.6	9	7.6	9.6	8.4		9.5	8.3	11.8	9.2	7.6	9	8.3		11.4	9.1		8.4	8.1				60
65	7.6	7.8	7.1	11	8.8	7.5	9.2	8.2	7.2	9.1	8.1	7.2	11.4	8.9	7.5	8.8	8.1		11.1	8.8	7.5	8.2	8			65
70	7	7.5	7	10.5	8.6	7.3	8.7	8	7.1	8.7	7.9	7.1	10.9	8.7	7.4	8.5	7.9	7.1	10.7	8.6	7.3	8	7.8	7		70
75	6.5	7.3	6.9	10.1	8.4	7.2	8.3	7.7	7	8.3	7.7	7	10.4	8.5	7.3	8.2	7.6	7	10.3	8.4	7.3	7.8	7.5	6.9		75
80	6.1	7.1	6.9	9.7	8.1	7.1	7.9	7.4	6.9	7.9	7.4	6.9	10	8.3	7.2	7.9	7.3	6.9	10	8.2	7.2	7.6	7.2	6.9		80
85	5.7	7	6.9	9.4	7.9	7.1	7.5	7.1	6.8	7.5	7.1	6.8	9.7	8.1	7.1	7.6	7.1	6.8	9.7	8.1	7.1	7.4	7	6.7		85
90	5.3	6.9		9.1	7.8	7	7.2	6.7	6.5	7.1	6.7	6.5	9.4	7.9	7.1	7.3	6.8	6.5	9.4	7.9	7	7.2	6.8	6.5		90
95				8.9	7.6	6.9	6.9	6.5	6.3	6.8	6.5	6.3	9.2	7.8	7	7	6.5	6.3	9.1	7.8	7	6.9	6.5	6.3		95
100				8.6	7.5	6.9	6.6	6.2	6	6.5	6.2	6.1	8.9	7.6	6.9	6.7	6.3	6.1	8.9	7.6	6.9	6.7	6.3	6.1		100
105				8.3	7.4	6.8	6.3	6	5.8	6.2	5.9	5.8	8.6	7.5	6.9	6.4	6	5.9	8.7	7.5	6.8	6.4	6.1	5.9		105
110				8	7.3	6.8	6	5.7	5.6	5.9	5.7	5.6	8.4	7.4	6.8	6.1	5.8	5.7	8.5	7.4	6.8	6.2	5.9	5.7		110
115				7.6	7.2	6.8	5.7	5.5	5.4	5.6	5.5	5.5	8	7.3	6.8	5.9	5.6	5.5	8.1	7.3	6.8	6	5.7	5.5		115
120				7.3	7.1	6.8	5.5	5.3	5.3	5.3	5.3	5.3	7.7	7.2	6.8	5.6	5.5	5.3	7.8	7.2	6.8	5.7	5.5	5.4		120
125				7	7	6.8	5.3	5.1	5.1	5.1	5.1	5.1	7.3	7.1	6.8	5.4	5.3	5.2	7.4	7.1	6.8	5.5	5.3	5.2		125
130				6.8	6.9	6.8	5.1	4.9	4.9	4.8	4.9	5	7	7	6.8	5.1	5.1	5	7	7	6.8	5.3	5.2	5.1		130
135				6.5	6.9	6.8	4.8	4.8	4.8	4.6	4.7	4.8	6.7	6.9	6.8	4.9	4.9	4.9	6.5	6.8	6.8	5.1	5	5		135
140				6.3	6.9	6.8	4.6	4.6	4.7	4.4	4.5	4.6	6.4	6.5	6.8	4.7	4.7	4.8	5.9	6.6	6.7	4.9	4.8	4.9		140
145				5.9	6.3	6.5	4.4	4.5	4.5	4.2	4.3	4.4	6	6.3	6.4	4.5	4.5	4.6	5.6	6	6.4	4.6	4.7	4.7		145
150				5.5	5.8	5.9	4.2	4.3	4.4	4.1	4.1	4.2	5.6	6	6.2	4.4	4.4	4.5	5.4	5.5	5.9	4.5	4.5	4.6		150
155				5	5.3	5.3	4.1	4.1	4.2	3.9	3.9	4	5.1	5.5	5.7	4.2	4.2	4.3	5.2	5.3	5.4	4.3	4.3	4.4		155
160				4.6	4.8		3.9	4	4.1	3.7	3.8	3.9	4.7	5.1	5.2	4	4	4.1	4.8	5.1	5.2	4.1	4.2	4.3		160
165				4.2			3.8	3.8		3.6	3.6		4.5	4.6	4.7	3.9	3.9	4	4.5	4.8	4.9	3.9	4	4.1		165
170							3.7			3.5			4.3	4.4		3.7	3.8	3.9	4.3	4.4	4.5	3.7	3.8	3.9		170
175													4.1	4.2		3.6	3.7		4.2	4.2	4.4	3.6	3.7	3.7		175
180																3.5	3.6		3.8	4		3.4	3.5	3.6		180
185																			3.5	3.6		3.3	3.4	3.5		185
190																			3.1			3.2	3.2			190
195																						2.9				195

t_197_002_01001_00_000

Lifting capacities Forces de levage

TK



	144 ft			148 ft			154 ft			156 ft			160 ft			166 ft			168 ft			170 ft			
	0°	20°	40°	0°	20°	40°	0°	20°	40°	K 62 ft			0°	20°	40°	0°	20°	40°	0°	20°	40°	0°	20°	40°	
30	9.3			11.9																					30
32	9.3			11.8			9			8.8			10.4												32
34	9.3			11.7			9			8.8			10.4			8.4			8.2			8			34
36	9.2			11.7			8.9			8.8			10.3			8.3			8.1			8			36
38	9.2			11.6			8.9			8.7			10.3			8.3			8.1			8			38
40	9.1			11.6			8.8			8.7			10.2			8.2			8			7.9			40
45	8.8			11.4			8.5			8.3			10.2			7.9			7.7			7.6			45
50	8.5			11.2			8.3			8.1			10.1			7.7			7.5			7.4			50
55	8.4	8		11	9.1		8.1	7.7		8			9.9	8.8		7.5			7.4			7.2			55
60	8.2	8		10.7	8.9		8	7.7		7.8	7.5		9.8	8.6		7.4	7.1		7.2	6.9		7.1	6.8		60
65	8.1	7.9		10.4	8.7		7.9	7.6		7.7	7.4		9.7	8.4		7.3	7		7.1	6.9		7	6.7		65
70	7.9	7.7		10.2	8.5	7.3	7.7	7.5		7.5	7.4		9.5	8.3		7.2	7		7	6.8		6.9	6.7		70
75	7.7	7.5	6.9	9.9	8.3	7.2	7.6	7.4	6.9	7.4	7.3	6.9	9.4	8.1	7.1	7	6.9		6.9	6.8		6.8	6.7		75
80	7.5	7.2	6.9	9.7	8.1	7.1	7.4	7.2	6.8	7.3	7.1	6.8	9.2	8	7	6.9	6.9	6.7	6.8	6.7	6.7	6.7	6.6	6.7	80
85	7.4	6.9	6.6	9.4	8	7	7.2	6.9	6.6	7.1	6.9	6.6	9	7.8	7	6.8	6.8	6.5	6.7	6.7	6.5	6.6	6.6	6.5	85
90	7.1	6.7	6.4	9.2	7.8	7	7.1	6.7	6.4	7	6.7	6.4	8.9	7.7	6.9	6.7	6.6	6.3	6.6	6.6	6.3	6.5	6.5	6.3	90
95	6.9	6.5	6.2	9	7.7	6.9	6.9	6.5	6.2	6.8	6.5	6.2	8.7	7.6	6.9	6.6	6.4	6.2	6.5	6.4	6.1	6.4	6.4	6.1	95
100	6.7	6.3	6.1	8.7	7.6	6.9	6.7	6.3	6.1	6.7	6.3	6	8.5	7.5	6.8	6.5	6.3	6	6.4	6.2	6	6.3	6.2	5.9	100
105	6.4	6.1	5.9	8.5	7.5	6.8	6.5	6.1	5.9	6.5	6.1	5.9	8.4	7.4	6.8	6.4	6.1	5.8	6.3	6	5.8	6.2	6	5.8	105
110	6.1	5.8	5.7	8.3	7.3	6.8	6.3	5.9	5.7	6.2	5.9	5.7	8.2	7.3	6.7	6.2	5.9	5.7	6.2	5.9	5.7	6.1	5.9	5.6	110
115	5.9	5.7	5.5	8	7.3	6.8	6	5.7	5.6	6	5.7	5.6	7.8	7.2	6.7	6	5.7	5.5	6	5.7	5.5	5.9	5.7	5.5	115
120	5.6	5.5	5.4	7.7	7.2	6.7	5.8	5.5	5.4	5.8	5.5	5.4	7.2	7.1	6.7	5.8	5.6	5.4	5.8	5.5	5.4	5.7	5.5	5.4	120
125	5.3	5.3	5.2	7.2	7.1	6.7	5.6	5.4	5.3	5.5	5.4	5.3	6.9	7	6.7	5.6	5.4	5.3	5.5	5.4	5.3	5.5	5.4	5.3	125
130	5.1	5.1	5.1	6.5	7	6.7	5.4	5.2	5.2	5.3	5.2	5.1	6.6	6.7	6.7	5.4	5.3	5.2	5.3	5.2	5.2	5.3	5.2	5.2	130
135	4.9	5	4.9	6.3	6.7	6.7	5.2	5.1	5	5.1	5.1	5	6.1	6.4	6.6	5.3	5.1	5	5.1	5.1	5	5.1	5.1	5	135
140	4.6	4.8	4.8	6	6.2	6.6	5	4.9	4.9	4.8	4.9	4.9	5.5	6.2	6.3	5.1	5	4.9	4.9	5	4.9	4.9	4.9	4.9	140
145	4.4	4.5	4.7	5.5	5.8	6.1	4.8	4.8	4.8	4.6	4.7	4.8	5.2	5.8	6.1	4.9	4.8	4.8	4.7	4.8	4.8	4.7	4.8	4.8	145
150	4.2	4.3	4.5	5.1	5.6	5.7	4.6	4.6	4.7	4.5	4.5	4.6	5	5.3	5.7	4.7	4.7	4.7	4.5	4.6	4.7	4.5	4.6	4.7	150
155	4	4.2	4.3	4.7	5.2	5.5	4.5	4.5	4.6	4.3	4.4	4.5	4.7	4.8	5.2	4.6	4.6	4.6	4.4	4.4	4.5	4.4	4.5	4.5	155
160	3.9	4	4.1	4.5	4.8	5.1	4.3	4.3	4.4	4.1	4.2	4.3	4.3	4.6	4.7	4.3	4.4	4.5	4.2	4.3	4.4	4.2	4.3	4.4	160
165	3.7	3.8	3.9	4.3	4.4	4.6	4.1	4.2	4.3	3.9	4	4.1	4	4.4	4.6	4	4.3	4.4	3.9	4.1	4.2	3.8	4.1	4.2	165
170	3.5	3.6	3.7	4.1	4.2	4.4	4	4	4.1	3.8	3.8	3.9	3.6	4.1	4.3	3.6	4.1	4.2	3.6	4	4.1	3.5	3.9	4.1	170
175	3.4	3.5	3.5	3.8	4.1	4.2	3.8	3.9	4	3.6	3.7	3.8	3.2	3.7	3.9	3.2	3.7	4	3.2	3.7	3.9	3.1	3.6	3.9	175
180	3.2	3.3	3.4	3.4	3.8	3.9	3.4	3.8	3.8	3.4	3.5	3.6	2.8	3.3	3.5	2.8	3.4	3.6	2.8	3.3	3.6	2.7	3.2	3.5	180
185	3.1	3.1	3.2	3.1	3.4	3.4	3.1	3.4	3.6	3	3.4	3.5	2.5	2.9	3.1	2.5	3	3.2	2.4	2.9	3.2	2.4	2.8	3.1	185
190	2.9	3		2.8	3	3	2.8	3.1	3.1	2.7	3	3.1	2.1	2.5	2.6	2.2	2.6	2.8	2.1	2.5	2.7	2	2.5	2.7	190
195	2.8	2.9		2.5	2.7		2.5	2.7	2.7	2.4	2.7	2.7	1.9	2.2	2.2	1.9	2.2	2.3	1.8	2.2	2.3	1.7	2.1	2.3	195
200				2.2			2.2	2.4		2.1	2.3		1.6	1.8	1.8	1.6	1.9	1.9	1.5	1.9	1.9	1.4	1.8	1.9	200
205							1.9	2		1.8	2			1.5			1.6	1.6		1.5	1.5		1.5	1.5	205
210										1.6															210

L_197_002_01001_00_000

Lifting capacities

Forces de levage

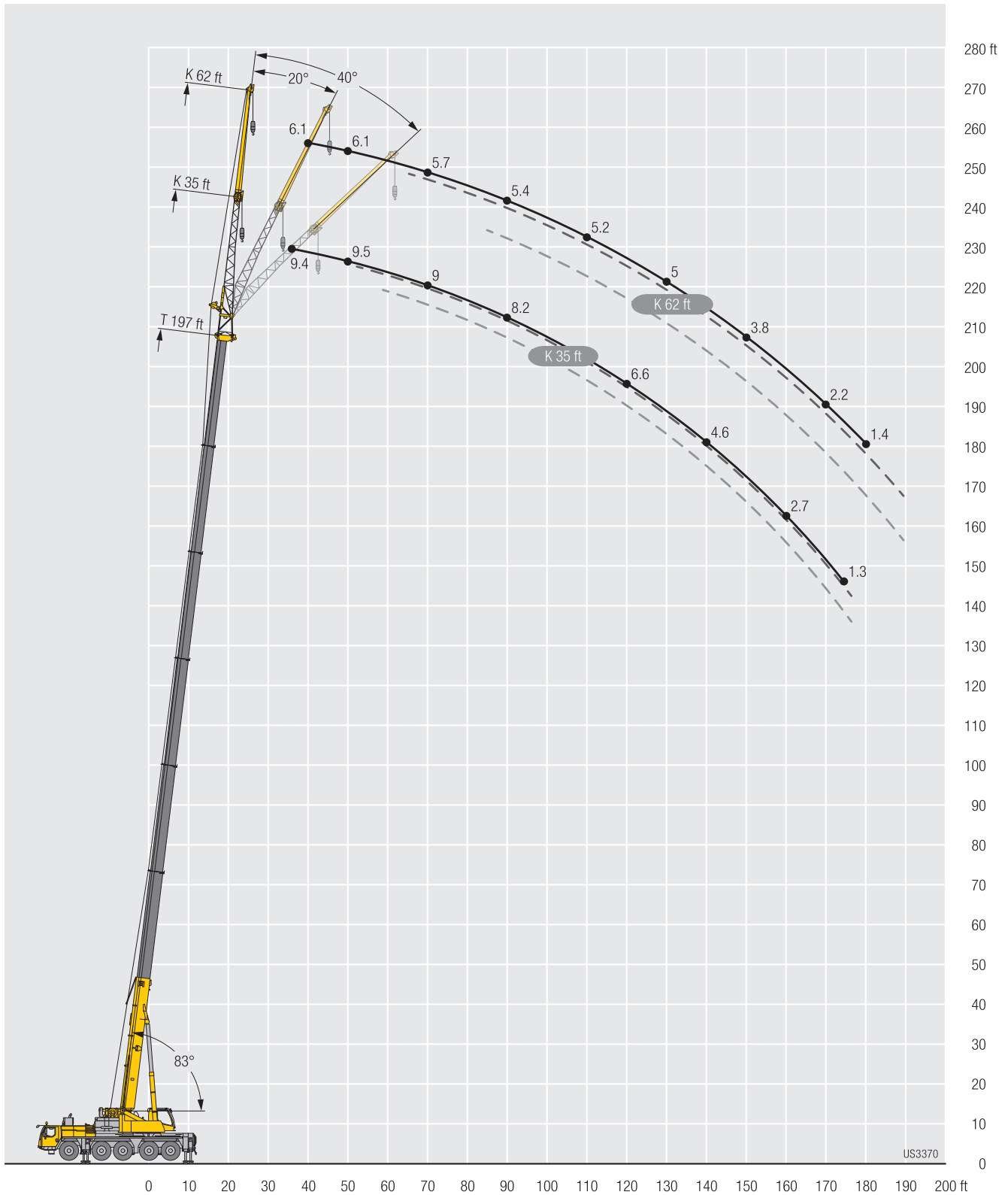
TK



	172 ft			178 ft			182 ft			184 ft			186 ft			191 ft			195 ft			197 ft				
	K 62 ft																									
	0°	20°	40°	0°	20°	40°	0°	20°	40°	0°	20°	40°	0°	20°	40°	0°	20°	40°	0°	20°	40°	0°	20°	40°		
34	9.1																								34	
36	9.1			7.7			7.3			7.7															36	
38	9			7.7			7.3			7.7			7.6			6.9									38	
40	9			7.7			7.3			7.7			7.6			6.9			6.3				6.1		40	
45	8.9			7.5			7.1			7.7			7.5			6.8			6.4				6.1		45	
50	8.9			7.2			6.9			7.4			7.3			6.7			6.3				6.1		50	
55	8.7			7			6.7			7.2			7.1			6.5			6.2				6.1		55	
60	8.6	8		6.9	6.5		6.6			7			6.9			6.4			6.1				6		60	
65	8.4	8		6.8	6.5		6.5	6.2		6.9	6.6		6.7	6.4		6.2	5.9		5.9	5.6			5.8	5.5	65	
70	8.3	7.9		6.7	6.5		6.4	6.2		6.8	6.5		6.6	6.4		6.1	5.9		5.8	5.6			5.7	5.5	70	
75	8.2	7.8	7	6.6	6.5		6.3	6.1		6.7	6.5		6.5	6.4		6	5.9		5.8	5.6			5.6	5.5	75	
80	8.1	7.7	6.9	6.5	6.4	6.5	6.2	6.1	6.2	6.6	6.5	6.5	6.5	6.4		6	5.8		5.7	5.6			5.6	5.4	80	
85	8	7.6	6.9	6.4	6.3	6.5	6.1	6.1	6.2	6.5	6.5	6.5	6.4	6.3	6.4	5.9	5.8	5.9	5.6	5.5	5.6	5.5	5.4	5.5	85	
90	7.9	7.5	6.8	6.4	6.3	6.3	6.1	6.1	6.2	6.4	6.4	6.4	6.3	6.3	6.3	5.8	5.8	5.9	5.5	5.5	5.6	5.4	5.4	5.5	90	
95	7.8	7.4	6.8	6.3	6.3	6.1	6	6	6.1	6.4	6.4	6.2	6.3	6.2	6.2	5.8	5.8	5.9	5.4	5.5	5.6	5.3	5.4	5.5	95	
100	7.7	7.3	6.7	6.2	6.2	6	5.9	6	5.9	6.3	6.3	6.1	6.2	6.2	6	5.7	5.7	5.9	5.4	5.5	5.7	5.3	5.4	5.5	100	
105	7.6	7.2	6.7	6.2	6	5.8	5.9	6	5.8	6.3	6.1	5.9	6.2	6.1	5.9	5.7	5.7	5.8	5.4	5.5	5.7	5.2	5.4	5.5	105	
110	7.4	7.1	6.7	6.1	5.9	5.7	5.8	5.8	5.6	6.2	6	5.8	6.1	5.9	5.8	5.6	5.7	5.6	5.3	5.5	5.6	5.2	5.4	5.5	110	
115	7.3	7	6.6	6	5.7	5.5	5.8	5.7	5.5	6.1	5.8	5.7	6.1	5.8	5.6	5.6	5.6	5.5	5.3	5.4	5.4	5.2	5.3	5.4	115	
120	7	6.9	6.6	5.8	5.6	5.4	5.6	5.5	5.4	6	5.7	5.5	6	5.7	5.5	5.5	5.5	5.4	5.2	5.3	5.3	5.1	5.2	5.3	120	
125	6.7	6.7	6.6	5.7	5.4	5.3	5.5	5.4	5.3	5.9	5.6	5.4	5.8	5.5	5.4	5.4	5.4	5.3	5.2	5.2	5.2	5.1	5.2	5.2	125	
130	6	6.6	6.5	5.5	5.3	5.2	5.3	5.2	5.2	5.7	5.4	5.3	5.7	5.4	5.3	5.3	5.2	5.2	5.1	5.2	5.1	5	5.1	5.1	130	
135	5.6	6.3	6.4	5.3	5.2	5.1	5.2	5.1	5	5.4	5.3	5.2	5.4	5.2	5.2	5.3	5.1	5.1	5	5	5	4.9	5	5	135	
140	5.4	5.8	6.2	5.2	5	4.9	5	5	4.9	5.1	5.2	5.1	4.9	5.1	5.1	5	5	5	4.8	4.9	4.9	4.7	4.9	4.9	140	
145	5.1	5.2	5.8	5	4.9	4.8	4.8	4.8	4.8	4.6	5	5	4.5	5	5	4.6	4.9	4.9	4.4	4.8	4.8	4.3	4.8	4.8	145	
150	4.7	4.9	5.3	4.7	4.8	4.8	4.5	4.7	4.7	4.1	4.8	4.9	4	4.8	4.9	4.1	4.8	4.8	3.9	4.7	4.7	3.8	4.6	4.7	150	
155	4.3	4.8	4.8	4.3	4.6	4.6	4.2	4.5	4.6	3.7	4.4	4.8	3.6	4.3	4.7	3.6	4.4	4.6	3.5	4.3	4.6	3.3	4.2	4.6	155	
160	3.9	4.5	4.7	3.9	4.4	4.5	3.8	4.3	4.5	3.3	4	4.4	3.1	3.9	4.4	3.2	4	4.5	3.1	3.9	4.3	2.9	3.8	4.3	160	
165	3.5	4.1	4.4	3.5	4.1	4.4	3.4	4	4.3	2.8	3.5	4	2.7	3.5	3.9	2.8	3.6	4	2.7	3.4	4	2.5	3.3	3.9	165	
170	3.1	3.7	4	3.1	3.7	4	3	3.6	4	2.4	3.1	3.6	2.3	3.1	3.5	2.4	3.2	3.6	2.3	3	3.5	2.2	2.9	3.5	170	
175	2.7	3.3	3.6	2.7	3.3	3.6	2.6	3.2	3.6	2	2.7	3.1	1.9	2.6	3.1	2	2.8	3.2	1.9	2.6	3.1	1.8	2.5	3	175	
180	2.3	2.9	3.2	2.3	2.9	3.3	2.2	2.8	3.2	1.6	2.3	2.7	1.5	2.2	2.6	1.7	2.4	2.8	1.6	2.3	2.7	1.4	2.2	2.6	180	
185	2	2.5	2.7	2	2.5	2.8	1.9	2.4	2.8		1.9	2.3		1.8	2.2		2	2.4		1.9	2.3		1.8	2.2	185	
190	1.6	2.1	2.3	1.6	2.2	2.4	1.5	2.1	2.4		1.5	1.8		1.4	1.8		1.6	1.9		1.5	1.9		1.4	1.8	190	
195		1.8	1.9		1.8	2		1.7	2			1.4						1.5						1.4		195
200		1.4	1.5		1.5	1.6		1.4	1.6																200	

t_197_002_01001_00_000

Lifting heights Hauteurs de levage



Lifting capacities

Forces de levage



	38 ft + 23 ft			111 ft + 23 ft			115 ft + 23 ft			117 ft + 23 ft			123 ft + 23 ft			130 ft + 23 ft			135 ft + 23 ft			142 ft + 23 ft			
	0°	20°	40°	0°	20°	40°	0°	20°	40°	0°	20°	40°	0°	20°	40°	0°	20°	40°	0°	20°	40°	0°	20°	40°	
10	32.5																							10	
11	32.5																							11	
12	32.5																							12	
13	32.5																							13	
14	32.5																							14	
15	32.5																							15	
16	32.5																							16	
17	32.5																							17	
18	32.5																							18	
19	32.5																							19	
20	32.5	31.7																						20	
22	32.4	29.8		28.2																				22	
24	31.3	28.1		28.2			14.1			13.6			26.8											24	
26	29.9	26.4		28.3			14.1			13.6			26.9			12.3			13.1					26	
28	28.6	25	22	27.9			14			13.6			26.8			12.2			22.2			10.6		28	
30	27.3	23.7	20.9	27.5			13.9			13.4			26.6			12.2			22.2			10.6		30	
32	26	22.5	20	27			13.7			13.3			26.3			12.1			22.2			10.6		32	
34	24.7	21.5	19.1	26.4	22.1		13.4			13.1			25.9			12			22			10.6		34	
36	23.3	20.5	18.3	25.9	21.5		13.2			12.8			25.4			11.8			21.8			10.5		36	
38	22.1	19.6	17.6	25.3	20.9		12.9	12.3		12.6	12.1		25	21.4		11.7			21.6			10.4		38	
40	20.9	18.6	16.8	24.6	20.3		12.6	11.9		12.3	11.7		24.5	20.8		11.5	11.1		21.3	19.1		10.3		40	
45	18.5	16.5	15.3	23	19	16.4	11.8	11		11.6	10.9		23.4	19.6	16.9	11	10.5		20.6	18.2		10	9.8	45	
50	16.4	14.9	13.9	21.5	17.9	15.6	11	10.2	9.9	10.8	10.1	9.8	22.1	18.5	16	10.4	9.9	9.5	19.8	17.3	15.5	9.6	9.4	50	
55	14.6	13.5	12.7	20.3	16.8	14.8	10.2	9.6	9.3	10.1	9.5	9.2	20.8	17.4	15.2	9.9	9.3	9	19.1	16.4	14.8	9.3	9	8.8	55
60	13.2	12.2	11.7	19	15.9	14	9.7	9.1	8.8	9.5	9	8.8	19.7	16.5	14.5	9.4	8.9	8.6	18.2	15.7	14.1	8.9	8.6	8.4	60
65	11.9	11.2	10.8	17.8	15.1	13.3	9.1	8.6	8.4	9	8.5	8.3	18.6	15.6	13.8	8.9	8.5	8.2	17.4	14.9	13.6	8.6	8.2	8	65
70	10.9	10.3	10.1	16.6	14.3	12.8	8.5	8.2	7.9	8.5	8.1	7.9	17.5	14.9	13.2	8.5	8.1	7.8	16.6	14.2	13	8.3	7.9	7.7	70
75	9.9	9.6	9.5	15.7	13.5	12.3	8	7.7	7.6	8	7.7	7.5	16.5	14.2	12.7	8.1	7.7	7.5	15.8	13.7	12.5	7.9	7.5	7.3	75
80	9.3	9	9	14.8	12.8	11.7	7.6	7.3	7.2	7.5	7.3	7.2	15.5	13.5	12.2	7.6	7.4	7.2	15	13.1	12.1	7.6	7.2	7	80
85	8.7	8.6	8.7	14	12.2	11.2	7.2	6.9	6.9	7.2	6.9	6.9	14.7	12.8	11.7	7.2	7	6.9	14.2	12.5	11.7	7.2	6.9	6.8	85
90				13.3	11.6	10.8	6.8	6.6	6.5	6.8	6.6	6.5	13.7	12.2	11.2	6.9	6.7	6.6	12.8	12	11.2	6.9	6.7	6.5	90
95				12.5	11.1	10.4	6.5	6.3	6.2	6.5	6.3	6.2	12.4	11.7	10.8	6.6	6.4	6.3	11.4	11.5	10.8	6.6	6.4	6.3	95
100				11.8	10.7	10.1	6.2	6	5.9	6.1	6	5.9	11	11	10.4	6.3	6.1	6	10.5	10.9	10.5	6.3	6.1	6	100
105				10.8	10.2	9.8	5.9	5.7	5.7	5.8	5.7	5.7	9.9	10.4	10.1	6	5.9	5.8	9.6	10	10.1	6	5.9	5.8	105
110				9.7	9.9	9.5	5.6	5.5	5.4	5.5	5.5	5.5	9.2	9.5	9.7	5.7	5.6	5.6	8.6	9.3	9.4	5.8	5.6	5.6	110
115				8.9	9.4	9.3	5.3	5.2	5.2	5.2	5.2	5.2	8.4	8.8	9.1	5.4	5.4	5.4	7.9	8.4	8.9	5.5	5.4	5.4	115
120				8.1	8.6	8.8	5.1	5	5	4.9	4.9	5	7.6	8.1	8.4	5.2	5.2	5.2	7.5	7.6	8.1	5.3	5.2	5.2	120
125				7.4	7.8	8.1	4.8	4.8	4.8	4.6	4.7	4.7	7	7.4	7.8	4.9	4.9	4.9	6.9	7.2	7.4	5	5	5	125
130				6.8	7.1	7.3	4.6	4.6	4.6	4.4	4.5	4.5	6.6	6.7	7.1	4.7	4.7	4.7	6.3	6.7	6.9	4.8	4.8	4.8	130
135				6.2	6.5	6.7	4.4	4.4	4.4	4.2	4.2	4.3	6.3	6.4	6.4	4.5	4.5	4.5	5.7	6.1	6.5	4.6	4.6	4.7	135
140				5.7	6	6.1	4.2	4.2	4.2	4	4	4.1	5.8	6	6.1	4.3	4.3	4.3	5.5	5.6	5.9	4.4	4.4	4.5	140
145				5.2	5.4	5.5	4	4	4	3.8	3.8	3.8	5.3	5.6	5.8	4.1	4.1	4.1	5.2	5.2	5.4	4.2	4.2	4.3	145
150				4.7	4.9	4.9	3.8	3.8	3.9	3.6	3.6	3.7	4.9	5.1	5.3	3.9	3.9	4	5	5	5.1	4	4.1	4.1	150
155				4.2	4.4	4.3	3.6	3.6	3.7	3.4	3.4	3.5	4.4	4.6	4.8	3.7	3.8	3.8	4.6	4.8	4.8	3.8	3.9	3.9	155
160				3.8	3.9		3.5	3.5	3.5	3.3	3.3	3.3	4.2	4.2	4.3	3.6	3.6	3.6	4.2	4.4	4.5	3.6	3.7	3.7	160
165							3.3	3.4		3.1	3.2		4	4	4.1	3.4	3.4	3.5	4	4	4.1	3.4	3.5	3.5	165
170													3.8	3.9		3.3	3.3	3.4	3.8	3.9	3.9	3.3	3.3	3.3	170
175																3.2	3.2		3.4	3.6	3.5	3.1	3.1	3.2	175
180																3.1			3.1	3.2	3.1	3	3	3	180
185																			2.8	2.9		2.8	2.8	2.8	185
190																							2.5	2.5	190

L_197_004_00001_00_000

Lifting capacities

Forces de levage

TVK



	144 ft + 23 ft			148 ft + 23 ft			154 ft + 23 ft			156 ft + 23 ft			160 ft + 23 ft			166 ft + 23 ft			168 ft + 23 ft			170 ft + 23 ft				
	K 35 ft																									
	0°	20°	40°	0°	20°	40°	0°	20°	40°	0°	20°	40°	0°	20°	40°	0°	20°	40°	0°	20°	40°	0°	20°	40°		
30	10.3			17.5			9.7																		30	
32	10.3			17.5			9.7				9.5			12.8											32	
34	10.3			17.5			9.7				9.5			12.8		8.8			8.6				8.4		34	
36	10.2			17.5			9.7				9.5			12.8		8.8			8.6				8.4		36	
38	10.1			17.5			9.7				9.5			12.8		8.8			8.6				8.4		38	
40	10.1			17.4			9.6				9.4			12.8		8.8			8.6				8.4		40	
45	9.8	9.6		17.2	15.7		9.4	9.3			9.2	9.1		12.8	13			8.7				8.5		8.3	45	
50	9.5	9.3		16.8	15.2		9.2	9			9	8.9		12.7	12.7			8.5	8.5			8.4	8.3	8.2	8.1	50
55	9.2	8.9	8.7	16.4	14.7	13.5	8.9	8.8	8.5		8.8	8.6	8.4	12.5	12.4	11.7		8.4	8.3			8.2	8.1	8.1	8	55
60	8.8	8.5	8.3	15.9	14.2	13	8.6	8.4	8.2		8.5	8.3	8.1	12.2	12.2	11.6		8.2	8	7.9		8	7.9	7.8	7.7	60
65	8.5	8.2	7.9	15.4	13.7	12.5	8.3	8.1	7.9		8.2	8	7.8	11.9	11.8	11.4		7.9	7.8	7.6		7.8	7.6	7.6	7.7	65
70	8.2	7.8	7.6	14.7	13.2	12.1	8.1	7.8	7.6		7.9	7.7	7.5	11.5	11.4	11.1		7.7	7.5	7.4		7.6	7.4	7.3	7.5	70
75	7.8	7.5	7.3	14.1	12.7	11.7	7.8	7.5	7.3		7.7	7.4	7.2	11.1	10.9	10.8		7.5	7.3	7.1		7.3	7.2	7.1	7.2	75
80	7.5	7.2	7	13.4	12.2	11.3	7.5	7.2	7		7.4	7.1	7	10.7	10.4	10.3		7.2	7	6.8		7.1	6.9	6.8	7	80
85	7.2	6.9	6.7	12.6	11.7	11	7.2	6.9	6.7		7.1	6.8	6.7	10.2	10	9.9		7	6.8	6.6		6.9	6.7	6.6	6.8	85
90	6.8	6.6	6.5	12	11.2	10.7	6.9	6.7	6.5		6.8	6.6	6.5	9.8	9.6	9.5		6.8	6.6	6.4		6.7	6.5	6.4	6.6	90
95	6.6	6.3	6.3	11	10.7	10.4	6.6	6.4	6.3		6.6	6.4	6.2	9.4	9.3	9.2		6.5	6.3	6.2		6.5	6.3	6.1	6.4	95
100	6.3	6.1	6	9.9	10.2	10	6.4	6.1	6.1		6.3	6.1	6	9	8.9	8.9		6.3	6.1	6		6.2	6.1	5.9	6.2	100
105	6	5.8	5.8	8.8	9.7	9.7	6.1	5.9	5.8		6.1	5.9	5.8	8.6	8.5	8.5		6.1	5.9	5.8		6	5.9	5.8	6	105
110	5.7	5.6	5.6	8.4	8.8	9.2	5.9	5.7	5.6		5.8	5.7	5.6	8.1	8.2	8.2		5.9	5.7	5.6		5.8	5.7	5.6	5.8	110
115	5.5	5.4	5.4	8	7.9	8.4	5.6	5.5	5.5		5.6	5.5	5.4	7.3	7.8	7.9		5.6	5.5	5.5		5.6	5.5	5.4	5.6	115
120	5.2	5.2	5.2	7.2	7.6	7.6	5.4	5.3	5.3		5.4	5.3	5.3	6.8	7.2	7.5		5.4	5.3	5.3		5.4	5.3	5.2	5.4	120
125	4.9	5	5	6.5	7.1	7.3	5.2	5.1	5.1		5.1	5.1	5.1	6.5	6.5	6.9		5.2	5.1	5.1		5.1	5.1	5.1	5.1	125
130	4.7	4.7	4.8	6.1	6.4	6.7	5	4.9	4.9		4.9	4.9	4.9	6.1	6.3	6.3		5	5	4.9		4.9	4.9	4.9	4.9	130
135	4.4	4.5	4.6	5.9	5.9	6.1	4.8	4.7	4.8		4.6	4.7	4.7	5.5	5.9	6.1		4.8	4.8	4.8		4.7	4.7	4.8	4.7	135
140	4.2	4.3	4.4	5.4	5.6	5.7	4.6	4.6	4.6		4.4	4.5	4.5	4.9	5.4	5.6		4.7	4.6	4.6		4.5	4.6	4.6	4.5	140
145	4	4.1	4.1	4.9	5.3	5.4	4.4	4.4	4.4		4.2	4.3	4.3	4.8	4.9	5.1		4.5	4.5	4.5		4.3	4.4	4.4	4.3	145
150	3.8	3.9	3.9	4.5	4.8	5	4.2	4.2	4.3		4	4.1	4.1	4.6	4.5	4.6		4.3	4.3	4.3		4.1	4.2	4.2	4.1	150
155	3.6	3.6	3.7	4.2	4.4	4.5	4	4.1	4.1		3.8	3.9	3.9	4.2	4.4	4.4		4.1	4.1	4.2		3.9	4	4	3.9	155
160	3.4	3.5	3.5	4.1	4.1	4.1	3.9	3.9	3.9		3.7	3.7	3.8	3.7	4.1	4.2		3.7	4	4		3.7	3.8	3.9	3.6	160
165	3.2	3.3	3.3	3.9	3.9	4	3.7	3.7	3.8		3.5	3.5	3.6	3.3	3.6	3.8		3.3	3.7	3.8		3.3	3.6	3.7	3.2	165
170	3.1	3.1	3.1	3.5	3.7	3.8	3.5	3.6	3.6		3.3	3.4	3.4	2.9	3.2	3.3		2.9	3.2	3.4		2.8	3.2	3.4	2.7	170
175	2.9	2.9	3	3.1	3.3	3.4	3.1	3.3	3.4		3	3.2	3.2	2.5	2.8	2.9		2.5	2.8	3		2.4	2.8	2.9	2.4	175
180	2.7	2.8	2.8	2.7	2.9	2.9	2.7	2.9	3		2.6	2.9	3	2.1	2.4	2.5		2.1	2.4	2.5		2.1	2.4	2.5	2	180
185	2.6	2.6	2.7	2.4	2.5	2.5	2.4	2.5	2.6		2.3	2.5	2.6	1.8	2	2		1.8	2	2.1		1.7	2	2.1	1.6	185
190	2.4	2.5		2.1	2.2	2.1	2	2.2	2.2		2	2.2	2.2	1.4	1.6	1.7		1.4	1.7	1.7		1.4	1.6	1.7	1.5	190
195	1.4			1.8	1.8		1.7	1.9	1.8		1.7	1.8	1.8							1.4				1.3		195
200							1.5	1.5			1.4	1.5	1.4													200

L_197_004_00001_00_000

Lifting capacities

Forces de levage



	172 ft + 23 ft			178 ft + 23 ft			182 ft + 23 ft			184 ft + 23 ft			186 ft + 23 ft			191 ft + 23 ft			195 ft + 23 ft			197 ft + 23 ft			
	K 35 ft																								
	0°	20°	40°	0°	20°	40°	0°	20°	40°	0°	20°	40°	0°	20°	40°	0°	20°	40°	0°	20°	40°	0°	20°	40°	
34	10																								34
36	10.1			8			7.5			8															36
38	10.1			8			7.6			8			7.8			7.1									38
40	10.1			8			7.6			8			7.8			7.2			6.7			6.6			40
45	10.1			8			7.6			8			7.8			7.2			6.8			6.6			45
50	10.1	10		7.9	7.9		7.6			7.9	7.9		7.8			7.2			6.8			6.6			50
55	10	9.8		7.8	7.7		7.5	7.4		7.9	7.8		7.7	7.7		7.2	7.1		6.8	6.7		6.7	6.6		55
60	9.8	9.7	9.3	7.7	7.6	7.4	7.4	7.3		7.8	7.7		7.6	7.5		7.1	7		6.7	6.6		6.6	6.5		60
65	9.6	9.5	9.3	7.5	7.4	7.3	7.2	7.2	7	7.6	7.5	7.4	7.5	7.4	7.3	7	6.9	6.7	6.6	6.6	6.4	6.5	6.4	6.3	65
70	9.5	9.4	9.2	7.3	7.2	7.2	7.1	7	7	7.5	7.3	7.3	7.4	7.3	7.2	6.8	6.7	6.7	6.5	6.5	6.4	6.4	6.4	6.2	70
75	9.2	9.2	9	7.1	7	7	6.9	6.8	6.8	7.3	7.2	7	7.2	7.1	7	6.7	6.6	6.6	6.4	6.4	6.3	6.3	6.3	6.2	75
80	9	8.9	8.9	6.9	6.8	6.8	6.7	6.6	6.6	7.2	7	6.8	7.1	6.9	6.8	6.5	6.5	6.5	6.3	6.2	6.2	6.2	6.1	6.1	80
85	8.7	8.6	8.7	6.7	6.6	6.6	6.5	6.5	6.4	7	6.8	6.6	6.9	6.7	6.6	6.4	6.3	6.3	6.2	6.1	6.1	6.1	6	6.1	85
90	8.4	8.3	8.4	6.6	6.5	6.3	6.4	6.3	6.2	6.8	6.5	6.4	6.7	6.5	6.4	6.2	6.2	6.2	6.1	6	6	6	5.9	5.9	90
95	8.1	8.1	8.1	6.4	6.3	6.1	6.2	6.1	6.1	6.6	6.3	6.2	6.5	6.3	6.2	6.1	6	6	5.9	5.8	5.8	5.8	5.7	5.7	95
100	7.8	7.8	7.8	6.2	6.1	5.9	6	5.9	5.9	6.4	6.2	6.1	6.4	6.1	6	5.9	5.8	5.8	5.8	5.7	5.7	5.7	5.6	5.5	100
105	7.6	7.5	7.5	6	5.9	5.8	5.9	5.8	5.7	6.2	6	5.9	6.2	6	5.8	5.8	5.7	5.7	5.6	5.5	5.6	5.6	5.5	5.5	105
110	7.3	7.2	7.3	5.8	5.7	5.6	5.7	5.6	5.5	6	5.8	5.7	6	5.8	5.7	5.6	5.5	5.5	5.5	5.5	5.4	5.4	5.4	5.4	110
115	7	7	7	5.6	5.5	5.5	5.5	5.4	5.4	5.8	5.6	5.6	5.8	5.6	5.5	5.5	5.4	5.4	5.3	5.3	5.3	5.3	5.2	5.3	115
120	6.6	6.7	6.8	5.4	5.3	5.3	5.3	5.3	5.2	5.6	5.5	5.4	5.6	5.4	5.4	5.3	5.2	5.3	5.2	5.1	5.2	5.2	5.1	5.1	120
125	6	6.4	6.5	5.3	5.2	5.1	5.1	5.1	5.1	5.4	5.3	5.2	5.4	5.3	5.2	5.2	5.1	5.1	5	5	5	5	5	5	125
130	5.4	5.9	6.3	5.1	5	5	4.9	4.9	4.9	5.3	5.1	5.1	5.3	5.1	5.1	5	4.9	5	4.9	4.9	4.9	4.8	4.9	4.9	130
135	5.2	5.4	5.7	4.9	4.8	4.8	4.8	4.8	4.8	4.9	5	5	4.8	5	5	4.8	4.8	4.8	4.7	4.7	4.8	4.5	4.7	4.8	135
140	4.9	4.9	5.1	4.7	4.7	4.7	4.6	4.6	4.7	4.4	4.8	4.8	4.3	4.8	4.8	4.4	4.7	4.7	4.2	4.5	4.6	4.1	4.5	4.6	140
145	4.6	4.7	4.7	4.5	4.5	4.6	4.3	4.4	4.5	3.9	4.4	4.6	3.7	4.3	4.6	3.9	4.3	4.6	3.7	4.3	4.4	3.5	4.1	4.4	145
150	4.1	4.5	4.6	4.1	4.4	4.4	4	4.2	4.3	3.4	3.9	4.2	3.3	3.8	4.2	3.4	3.9	4.2	3.2	3.7	4.1	3.1	3.6	4	150
155	3.7	4	4.3	3.7	4.1	4.2	3.6	3.9	4.1	3	3.4	3.8	2.8	3.3	3.7	2.9	3.4	3.8	2.8	3.3	3.6	2.6	3.1	3.5	155
160	3.2	3.6	3.8	3.2	3.6	3.9	3.1	3.6	3.8	2.5	3	3.3	2.4	2.9	3.2	2.5	3	3.3	2.3	2.8	3.1	2.2	2.7	3	160
165	2.8	3.2	3.4	2.8	3.2	3.4	2.7	3.1	3.4	2.1	2.5	2.8	1.9	2.4	2.7	2.1	2.5	2.8	1.9	2.4	2.7	1.8	2.3	2.6	165
170	2.3	2.7	2.9	2.4	2.8	3	2.3	2.7	2.9	1.6	2.1	2.4	1.4	2	2.2	1.6	2.1	2.4	1.5	2	2.3		1.8	2.1	170
175	1.9	2.3	2.5	2	2.3	2.5	1.9	2.3	2.5		1.7	1.9		1.5	1.8		1.7	2		1.5	1.8		1.3	1.7	175
180	1.6	1.9	2	1.6	1.9	2.1	1.5	1.9	2																180
185		1.5	1.6		1.6	1.7		1.4	1.6																185

L_197_004_00001_00_000

Lifting capacities

Forces de levage

TVK



	38 ft + 23 ft			111 ft + 23 ft			115 ft + 23 ft			117 ft + 23 ft			123 ft + 23 ft			130 ft + 23 ft			135 ft + 23 ft			142 ft + 23 ft			
	0°	20°	40°	0°	20°	40°	0°	20°	40°	0°	20°	40°	0°	20°	40°	0°	20°	40°	0°	20°	40°	0°	20°	40°	
12	19																							12	
13	18.9																								13
14	18.8																								14
15	18.7																								15
16	18.6																								16
17	18.5																								17
18	18.4																								18
19	18.2																								19
20	18																								20
22	17.7																								22
24	17.3			13.1																					24
26	16.8			13																					26
28	16.4			12.9			8.9			8.7			12.7												28
30	15.9			12.9			8.9			8.7			12.6						11.3						30
32	15.4			12.8			8.9			8.7			12.5			8.1			11.2						32
34	15	11		12.7			8.9			8.7			12.4			8.1			11.1			7.3			34
36	14.6	10.7		12.6			8.9			8.7			12.4			8			11.1			7.3			36
38	14.1	10.4		12.5			8.7			8.6			12.3			8			11			7.3			38
40	13.7	10.2		12.4			8.6			8.4			12.2			7.9			11			7.2			40
45	12.6	9.7		12.2			8.4			8.2			12			7.6			10.8			6.9			45
50	11.7	9.3	7.9	11.8	9.5		8.1			7.9			11.7	9.6		7.4			10.7			6.7			50
55	10.9	8.9	7.7	11.5	9.3		7.9	7.5		7.7	7.2		11.5	9.3		7.2	6.8		10.5	9.1		6.6			55
60	10.1	8.6	7.5	11.2	9		7.6	7.3		7.5	7.1		11.2	9.1		7.1	6.8		10.4	8.9		6.4	6.1		60
65	9.3	8.3	7.3	10.8	8.8	7.5	7.3	6.9		7.2	6.8		10.9	8.9		6.9	6.7		10.2	8.7		6.3	6		65
70	8.6	8	7.2	10.5	8.6	7.3	6.9	6.6	6.4	6.9	6.5	6.4	10.6	8.7	7.4	6.7	6.4		10	8.5	7.3	6.2	5.9		70
75	8.1	7.7	7.1	10.1	8.4	7.2	6.6	6.3	6.1	6.5	6.2	6.1	10.3	8.5	7.3	6.5	6.1	6	9.7	8.4	7.2	6.1	5.9		75
80	7.5	7.4	7	9.8	8.2	7.2	6.3	5.9	5.9	6.2	5.9	5.8	10	8.3	7.2	6.2	5.9	5.7	9.5	8.2	7.1	6	5.7	5.6	80
85	7	7	6.7	9.4	8	7.1	5.9	5.7	5.6	5.9	5.6	5.5	9.7	8.1	7.1	5.9	5.6	5.5	9.2	8.1	7.1	5.7	5.5	5.4	85
90	6.6	6.6	6.5	9.1	7.8	7	5.6	5.4	5.3	5.6	5.4	5.3	9.4	8	7	5.6	5.4	5.3	9	7.9	7	5.5	5.2	5.2	90
95	6.2	6.3	6.2	8.7	7.6	6.9	5.3	5.2	5.1	5.3	5.2	5.1	9	7.8	7	5.3	5.1	5	8.8	7.7	6.9	5.3	5	5	95
100	5.9	5.9	5.9	8.4	7.4	6.8	5	4.9	4.9	5	4.9	4.9	8.7	7.6	6.8	5.1	4.9	4.8	8.5	7.5	6.9	5	4.9	4.8	100
105	5.6	5.6	5.7	8.1	7.2	6.7	4.8	4.7	4.7	4.8	4.7	4.7	8.4	7.4	6.7	4.9	4.7	4.6	8.2	7.3	6.7	4.8	4.7	4.6	105
110	5.3	5.4		7.7	6.9	6.5	4.6	4.5	4.5	4.6	4.5	4.5	8.1	7.2	6.6	4.7	4.5	4.5	7.9	7.1	6.6	4.6	4.5	4.4	110
115	5.1			7.4	6.7	6.3	4.4	4.3	4.3	4.4	4.3	4.3	7.8	7	6.5	4.5	4.3	4.3	7.7	6.9	6.4	4.5	4.3	4.3	115
120				7.2	6.5	6.2	4.1	4.1	4.1	4.2	4.1	4.1	7.4	6.8	6.4	4.3	4.1	4.1	7.2	6.7	6.3	4.3	4.1	4.1	120
125				6.9	6.3	6.1	3.9	3.9	3.9	4	3.9	3.9	7	6.6	6.2	4.1	4	4	6.9	6.5	6.1	4.1	4	4	125
130				6.7	6.1	5.9	3.8	3.7	3.8	3.8	3.7	3.7	6.7	6.4	6.1	3.9	3.8	3.8	6.3	6.3	6	3.9	3.8	3.8	130
135				6.5	6	5.8	3.6	3.6	3.6	3.6	3.6	3.6	6.3	6.2	6	3.7	3.7	3.7	5.8	6	5.9	3.8	3.7	3.7	135
140				6.2	5.8	5.7	3.4	3.4	3.4	3.4	3.4	3.4	5.8	6	5.8	3.6	3.5	3.5	5.5	5.8	5.8	3.6	3.6	3.6	140
145				5.8	5.7	5.6	3.3	3.3	3.3	3.3	3.3	3.3	5.3	5.7	5.7	3.4	3.4	3.4	5.2	5.5	5.6	3.5	3.4	3.4	145
150				5.3	5.5	5.5	3.1	3.1	3.2	3.1	3.1	3.2	4.9	5.4	5.5	3.3	3.3	3.3	4.8	5.1	5.4	3.4	3.3	3.3	150
155				4.9	5.4	5.4	3	3	3.1	2.9	3	3	4.7	4.9	5.3	3.1	3.1	3.2	4.3	4.9	5	3.2	3.2	3.2	155
160				4.5	4.9	5.1	2.9	2.9	2.9	2.8	2.8	2.9	4.4	4.5	4.8	3	3	3	4	4.5	4.8	3.1	3.1	3.1	160
165				4	4.5	4.6	2.7	2.8	2.8	2.6	2.7	2.8	4.1	4.3	4.4	2.8	2.9	2.9	3.8	4.1	4.4	3	3	3	165
170				3.6	4	4.1	2.6	2.7	2.7	2.5	2.6	2.6	3.7	4.1	4.2	2.7	2.8	2.8	3.6	3.7	4	2.8	2.9	2.9	170
175				3.2	3.6	3.6	2.5	2.6	2.6	2.3	2.4	2.5	3.3	3.7	3.9	2.6	2.6	2.7	3.4	3.5	3.6	2.7	2.8	2.8	175
180				2.9	3.1		2.4	2.5	2.5	2.2	2.3	2.3	3	3.3	3.4	2.4	2.5	2.6	3	3.4	3.5	2.6	2.6	2.7	180
185				2.5	2.7		2.3	2.3		2.1	2.2		2.9	3	3	2.3	2.4	2.4	2.7	3.1	3.2	2.4	2.5	2.6	185
190							2.2	2.2		2	2.1		2.8	2.8	2.9	2.2	2.3	2.3	2.6	2.7	2.8	2.3	2.4	2.4	190
195										2			2.5	2.6		2.1	2.2	2.3	2.4	2.5	2.6	2.2	2.3	2.3	195
200													2.4			2.1	2.1		2.2	2.4	2.3	2	2.1	2.2	200
205																2			2	2.1		1.9	2	2	205
210																			1.7	1.8		1.7	1.8		210
215																						1.4	1.5		215

t_197_004_01001_00_000

Lifting capacities

Forces de levage



Lifting height (ft)	144 ft + 23 ft			148 ft + 23 ft			154 ft + 23 ft			156 ft + 23 ft			160 ft + 23 ft			166 ft + 23 ft			168 ft + 23 ft			170 ft + 23 ft			Lifting height (ft)	
	K 62 ft																									
	0°	20°	40°	0°	20°	40°	0°	20°	40°	0°	20°	40°	0°	20°	40°	0°	20°	40°	0°	20°	40°	0°	20°	40°		
34	7.1			9.7																				34		
36	7.1			9.7			6.8			6.6			8.5											36		
38	7.1			9.7			6.8			6.6			8.5			6.2								38		
40	7			9.6			6.8			6.6			8.5			6.2			5.9				5.7	40		
45	6.8			9.6			6.6			6.4			8.5			6.1			6				5.8	45		
50	6.6			9.5			6.4			6.2			8.4			5.9			5.8				5.6	50		
55	6.4			9.4			6.2			6.1			8.3			5.7			5.6				5.5	55		
60	6.3	6		9.4	8.5		6.1			6			8.1	7.4		5.6			5.5				5.4	60		
65	6.2	5.9		9.3	8.4		6	5.7		5.8	5.6		7.9	7.4		5.5	5.2		5.4	5.1			5.3	5	65	
70	6.1	5.8		9.2	8.2		5.9	5.6		5.7	5.5		7.7	7.4		5.4	5.2		5.3	5			5.2	4.9	70	
75	6	5.8		9	8.1	7.1	5.8	5.6		5.6	5.4		7.5	7.3		5.3	5.1		5.2	5			5.1	4.9	75	
80	5.8	5.7	5.5	8.9	8	7	5.6	5.6	5.3	5.6	5.4	5.2	7.4	7.2	6.7	5.2	5.1		5.1	5			5	4.9	80	
85	5.6	5.4	5.3	8.7	7.8	7	5.5	5.4	5.3	5.4	5.3	5.1	7.3	7.1	6.7	5.2	5.1	4.9	5	4.9	4.7		4.9	4.8	4.7	85
90	5.4	5.2	5.1	8.4	7.6	6.9	5.3	5.2	5.1	5.3	5.2	5.1	7.2	7.1	6.7	5.1	5	4.9	4.9	4.9	4.8		4.9	4.8	4.7	90
95	5.2	5	4.9	8.2	7.4	6.9	5.2	5	4.9	5.1	5	4.9	7.1	7	6.6	5	4.9	4.8	4.8	4.8	4.7		4.8	4.8	4.7	95
100	5	4.8	4.7	8	7.2	6.7	5	4.8	4.8	5	4.8	4.7	7	6.9	6.4	4.8	4.7	4.7	4.7	4.7	4.6		4.7	4.6	4.6	100
105	4.8	4.7	4.6	7.8	7.1	6.6	4.8	4.7	4.6	4.8	4.6	4.6	6.9	6.7	6.3	4.7	4.6	4.5	4.6	4.6	4.5		4.6	4.5	4.5	105
110	4.6	4.5	4.4	7.6	6.9	6.4	4.7	4.5	4.4	4.6	4.5	4.4	6.8	6.5	6.2	4.5	4.4	4.4	4.5	4.4	4.3		4.5	4.4	4.3	110
115	4.4	4.3	4.3	7.3	6.7	6.3	4.5	4.3	4.3	4.5	4.3	4.3	6.7	6.4	6.1	4.4	4.3	4.2	4.4	4.3	4.2		4.3	4.2	4.2	115
120	4.3	4.2	4.1	6.9	6.5	6.1	4.3	4.2	4.1	4.3	4.2	4.1	6.5	6.3	6	4.3	4.2	4.1	4.2	4.1	4.1		4.2	4.1	4.1	120
125	4.1	4	4	6.3	6.3	6	4.2	4	4	4.1	4	4	6.2	6.1	5.8	4.1	4	4	4.1	4	4		4.1	4	3.9	125
130	3.9	3.8	3.8	6.1	6.2	5.9	4	3.9	3.8	4	3.9	3.9	5.7	6	5.7	4	3.9	3.9	4	3.9	3.8		4	3.9	3.8	130
135	3.8	3.7	3.7	5.7	5.9	5.8	3.9	3.7	3.7	3.9	3.7	3.7	5.1	5.8	5.6	3.9	3.8	3.7	3.9	3.7	3.7		3.8	3.7	3.7	135
140	3.6	3.6	3.6	5.2	5.6	5.7	3.7	3.6	3.6	3.7	3.6	3.6	4.9	5.5	5.5	3.7	3.6	3.6	3.7	3.6	3.6		3.7	3.6	3.6	140
145	3.5	3.4	3.4	4.7	5.4	5.5	3.6	3.5	3.5	3.6	3.5	3.5	4.7	5	5.4	3.6	3.5	3.5	3.6	3.5	3.5		3.6	3.5	3.5	145
150	3.3	3.3	3.3	4.5	5	5.3	3.4	3.4	3.4	3.4	3.4	3.4	4.3	4.6	5.1	3.5	3.4	3.4	3.4	3.4	3.4		3.5	3.4	3.4	150
155	3.1	3.2	3.2	4.3	4.5	5	3.3	3.3	3.3	3.3	3.3	3.3	3.9	4.4	4.6	3.4	3.3	3.3	3.3	3.3	3.3		3.3	3.3	3.3	155
160	3	3.1	3.1	4	4.2	4.5	3.2	3.2	3.2	3.1	3.2	3.2	3.5	4.1	4.4	3.3	3.2	3.2	3.2	3.2	3.2		3.2	3.2	3.2	160
165	2.8	2.9	3	3.6	4	4.1	3.1	3.1	3.1	3	3.1	3.1	3.2	3.7	4.1	3.1	3.1	3.1	3	3.1	3.1		3.1	3.1	3.1	165
170	2.7	2.8	2.9	3.2	3.8	3.9	2.9	3	3	2.8	2.9	3	3.1	3.3	3.8	3	3	3	2.9	3	3		2.9	3	3	170
175	2.5	2.7	2.7	3	3.4	3.7	2.8	2.9	2.9	2.7	2.8	2.9	2.8	3	3.3	2.8	2.9	2.9	2.7	2.9	2.9		2.6	2.9	2.9	175
180	2.4	2.5	2.6	2.8	3	3.3	2.7	2.8	2.8	2.6	2.7	2.8	2.5	2.9	2.9	2.4	2.8	2.9	2.4	2.8	2.8		2.3	2.8	2.8	180
185	2.2	2.3	2.4	2.7	2.7	2.8	2.6	2.7	2.7	2.4	2.5	2.6	2.1	2.6	2.8	2.1	2.6	2.8	2.1	2.6	2.7		2	2.6	2.7	185
190	2.1	2.2	2.2	2.4	2.6	2.7	2.4	2.5	2.6	2.3	2.4	2.5	1.8	2.3	2.6	1.8	2.3	2.6	1.7	2.3	2.5		1.6	2.2	2.5	190
195	2	2.1	2.1	2.1	2.5	2.6	2	2.4	2.5	2	2.3	2.3	1.5	2	2.2	1.4	2	2.2	1.4	1.9	2.2			1.9	2.2	195
200	1.9	1.9	2	1.8	2.1	2.2	1.7	2.1	2.3	1.7	2.1	2.2		1.6	1.8		1.6	1.9		1.6	1.8			1.5	1.8	200
205	1.7	1.8	1.8	1.5	1.8	1.9	1.5	1.8	1.9	1.4	1.8	1.9			1.5			1.5			1.5				1.4	205
210	1.6	1.7		1.5	1.5			1.5	1.5		1.4	1.5														210
215		1.5																								215

t_197_004_01001_00_000

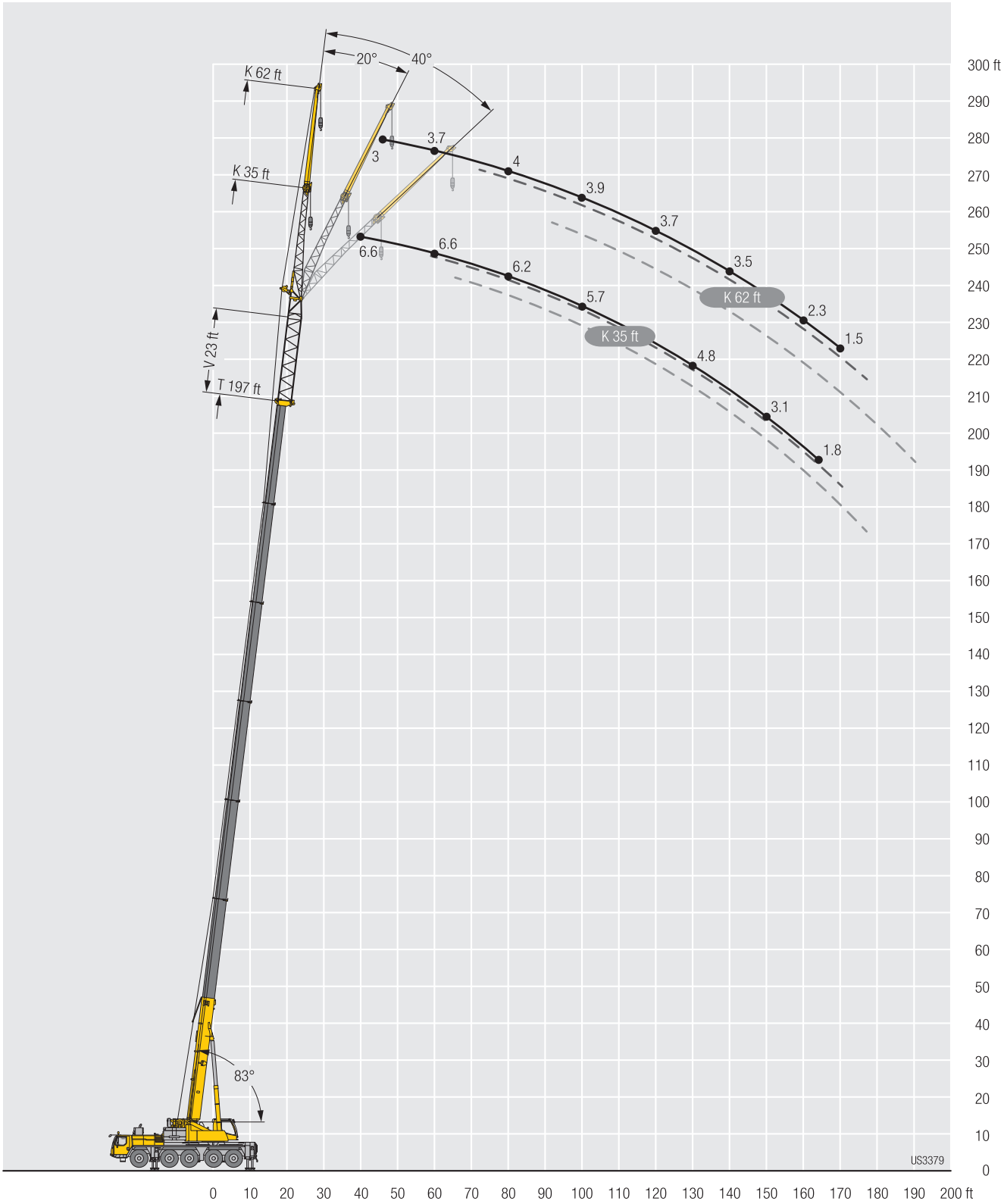
Lifting capacities Forces de levage



	172 ft + 23 ft			178 ft + 23 ft			182 ft + 23 ft			184 ft + 23 ft			186 ft + 23 ft			191 ft + 23 ft			195 ft + 23 ft			197 ft + 23 ft			
	K 62 ft																								
	0°	20°	40°	0°	20°	40°	0°	20°	40°	0°	20°	40°	0°	20°	40°	0°	20°	40°	0°	20°	40°	0°	20°	40°	
40	7			5.1																					40
45	7			5.3			4.7			5.2			4.9			3.9			3.3			3			45
50	7			5.4			5			5.3			5.1			4.2			3.5			3.2			50
55	6.8			5.3			5			5.3			5.1			4.4			3.8			3.5			55
60	6.6			5.2			5			5.3			5.1			4.5			4			3.7			60
65	6.4	6		5.1			4.9			5.2			5.1			4.5			4.1			3.9			65
70	6.2	6		5	4.8		4.8	4.5		5.1	4.8		5	4.7		4.5	4.3		4.1	4		3.9			70
75	6.2	6		4.9	4.7		4.7	4.5		5	4.8		4.9	4.7		4.5	4.3		4.2	4		4	4		75
80	6.1	5.9		4.8	4.6		4.6	4.5		4.9	4.8		4.8	4.7		4.4	4.2		4.2	4		4	3.9		80
85	6	5.9	5.6	4.8	4.6	4.5	4.5	4.5		4.9	4.7	4.6	4.8	4.6		4.3	4.2		4.1	4		4	3.9		85
90	5.9	5.8	5.7	4.7	4.6	4.5	4.5	4.4	4.3	4.8	4.7	4.6	4.7	4.6	4.5	4.3	4.2	4.1	4.1	4	3.9	4	3.9	3.8	90
95	5.9	5.8	5.6	4.7	4.6	4.6	4.5	4.4	4.3	4.8	4.6	4.5	4.7	4.5	4.4	4.2	4.2	4.1	4	4	3.9	3.9	3.9	3.8	95
100	5.8	5.8	5.6	4.6	4.6	4.5	4.4	4.3	4.3	4.7	4.6	4.5	4.6	4.5	4.4	4.2	4.2	4.1	4	4	3.9	3.9	3.8	3.8	100
105	5.7	5.8	5.6	4.5	4.5	4.5	4.3	4.3	4.3	4.6	4.5	4.5	4.5	4.5	4.4	4.1	4.1	4.1	3.9	3.9	3.9	3.8	3.8	3.8	105
110	5.7	5.7	5.6	4.4	4.4	4.3	4.2	4.2	4.2	4.4	4.4	4.4	4.4	4.4	4.4	4.1	4.1	4.1	3.9	3.9	3.9	3.8	3.8	3.9	110
115	5.6	5.6	5.6	4.3	4.3	4.2	4.2	4.2	4.2	4.4	4.3	4.3	4.3	4.3	4.3	4	4.1	4.1	3.8	3.9	3.8	3.7	3.8	3.8	115
120	5.5	5.4	5.6	4.2	4.1	4.1	4.1	4.1	4	4.3	4.2	4.1	4.2	4.2	4.1	3.9	4	4	3.8	3.9	3.8	3.7	3.8	3.8	120
125	5.4	5.3	5.5	4.1	4	4	4	4	3.9	4.2	4.1	4	4.1	4	4	3.9	3.9	3.9	3.7	3.9	3.8	3.7	3.8	3.8	125
130	5.3	5.2	5.4	4	3.9	3.9	3.9	3.8	3.8	4.1	4	3.9	4	3.9	3.9	3.8	3.8	3.8	3.7	3.8	3.7	3.6	3.7	3.7	130
135	5	5	5.2	3.9	3.8	3.7	3.8	3.7	3.7	4	3.8	3.8	3.9	3.8	3.8	3.7	3.7	3.7	3.6	3.7	3.7	3.6	3.6	3.6	135
140	4.6	4.9	5	3.8	3.6	3.6	3.7	3.6	3.6	3.8	3.7	3.7	3.8	3.7	3.7	3.7	3.6	3.6	3.6	3.6	3.6	3.5	3.5	3.5	140
145	4	4.8	4.9	3.6	3.5	3.5	3.6	3.5	3.5	3.7	3.6	3.6	3.7	3.6	3.6	3.6	3.5	3.5	3.4	3.5	3.5	3.4	3.4	3.4	145
150	3.6	4.4	4.7	3.5	3.4	3.4	3.5	3.4	3.4	3.4	3.5	3.5	3.3	3.5	3.5	3.4	3.4	3.4	3.2	3.4	3.4	3.1	3.4	3.4	150
155	3.5	4	4.5	3.4	3.3	3.3	3.4	3.3	3.3	3.1	3.4	3.4	2.9	3.4	3.4	3	3.3	3.3	2.8	3.3	3.3	2.7	3.3	3.3	155
160	3.4	3.5	4.2	3.3	3.2	3.2	3.2	3.2	3.2	2.7	3.3	3.3	2.5	3.3	3.3	2.6	3.2	3.2	2.4	3.1	3.2	2.3	3.1	3.2	160
165	3.1	3.2	3.7	3	3.1	3.1	2.8	3.1	3.1	2.3	3	3.2	2.1	3	3.2	2.2	3	3.1	2.1	2.9	3.1	1.9	2.8	3.1	165
170	2.7	3.1	3.3	2.6	3	3.1	2.5	3	3	1.9	2.7	3.1	1.7	2.6	3.1	1.8	2.6	3.1	1.6	2.5	2.9	1.5	2.4	3	170
175	2.3	2.9	3.1	2.3	2.9	3	2.1	2.8	2.9	1.4	2.3	2.8		2.2	2.7	1.4	2.3	2.8		2.1	2.7	2	2.6		175
180	1.9	2.6	3	1.9	2.6	2.9	1.8	2.5	2.9		1.9	2.4		1.8	2.3		1.9	2.4		1.7	2.3		1.6	2.2	180
185	1.6	2.2	2.6	1.6	2.2	2.7	1.4	2.1	2.5		1.5	2		1.3	1.9		1.5	2			1.9		1.8		185
190		1.9	2.2		1.9	2.3		1.8	2.2			1.6			1.5			1.6			1.5		1.4		190
195		1.5	1.8		1.5	1.9		1.4	1.8																195
200			1.4			1.5			1.4																200

L_197_004_01001_00_000

Lifting heights Hauteurs de levage



Lifting capacities

Forces de levage



	38 ft + 46 ft			111 ft + 46 ft			115 ft + 46 ft			117 ft + 46 ft			123 ft + 46 ft			130 ft + 46 ft			135 ft + 46 ft			142 ft + 46 ft				
	0°	20°	40°	0°	20°	40°	0°	20°	40°	0°	20°	40°	0°	20°	40°	0°	20°	40°	0°	20°	40°	0°	20°	40°		
12	32.5																							12		
13	32.5																								13	
14	32.5																								14	
15	32.5																								15	
16	32.4																								16	
17	32.3																								17	
18	31.9																								18	
19	31.4																								19	
20	30.4																								20	
22	28.4																								22	
24	26.6	23.5																							24	
26	24.9	22.1		19.7																					26	
28	23.4	20.9		19.4			9.6			9.3			19												28	
30	22.1	19.8		19.1			9.6			9.3			18.8						14.5						30	
32	21	18.7	17.3	18.7			9.6			9.3			18.5			8.5			14.5						32	
34	19.9	17.7	16.4	18.3			9.5			9.2			18.1			8.5			14.5				7.5		34	
36	18.8	16.7	15.6	17.9			9.4			9.1			17.8			8.4			14.4				7.5		36	
38	17.8	15.9	14.9	17.5	15.3		9.2			9			17.5			8.4			14.3				7.5		38	
40	16.7	15.2	14.2	17.1	14.9		9.1			8.9			17.2	15.3		8.3			14.2				7.5		40	
45	14.4	13.6	12.7	15.9	13.9		8.8	8.6		8.6	8.5		16.3	14.4		8.1	8		13.7	12.8			7.3		45	
50	12.7	12	11.5	14.8	13	11.8	8.4	8.1		8.2	8		15.3	13.5	12.3	7.8	7.7		13.2	12.2			7.2	7.1	50	
55	11.4	10.7	10.4	13.8	12.1	11.1	7.9	7.7	7.6	7.8	7.6	7.5	14.4	12.7	11.5	7.5	7.3	7.2	12.6	11.6	10.7		6.9	6.9	55	
60	10.1	9.7	9.4	13	11.4	10.5	7.4	7.2	7.1	7.3	7.2	7.1	13.4	11.9	10.9	7.2	7	6.9	12.1	11	10.2		6.7	6.7	6.6	60
65	9.2	8.9	8.7	12.2	10.7	9.9	7	6.8	6.8	6.9	6.8	6.7	12.7	11.2	10.3	6.8	6.6	6.6	11.5	10.4	9.7		6.5	6.4	6.3	65
70	8.5	8.2	8.1	11.4	10.2	9.5	6.6	6.4	6.4	6.6	6.4	6.3	12	10.5	9.8	6.4	6.3	6.2	10.9	9.9	9.3		6.2	6.1	6	70
75	7.8	7.6	7.5	10.6	9.7	9.1	6.3	6.1	6	6.2	6.1	6	11.3	10.1	9.4	6.1	6	5.9	10.5	9.5	9		5.9	5.8	5.7	75
80	7.2	7.1	7	9.9	9.2	8.7	5.9	5.8	5.7	5.9	5.8	5.7	10.5	9.6	9	5.8	5.7	5.6	10	9.1	8.6		5.7	5.5	5.5	80
85	6.8	6.6	6.6	9.3	8.7	8.4	5.5	5.5	5.4	5.5	5.5	5.4	9.9	9.2	8.7	5.5	5.4	5.4	9.6	8.8	8.3		5.4	5.3	5.2	85
90	6.3	6.2	6.2	8.9	8.3	8	5.2	5.2	5.2	5.2	5.1	5.1	9.3	8.8	8.3	5.2	5.1	5.1	9.1	8.5	8.1		5.2	5	5	90
95	5.8	5.8	5.8	8.5	8	7.7	4.9	4.9	4.9	4.9	4.8	4.9	8.9	8.4	8	4.9	4.9	4.9	8.7	8.1	7.8		4.9	4.8	4.8	95
100	5.5	5.5	5.5	8.1	7.6	7.4	4.6	4.6	4.6	4.6	4.6	4.6	8.5	8	7.7	4.7	4.6	4.7	8.3	7.8	7.5		4.7	4.6	4.6	100
105	5.2	5.1	5.2	7.8	7.4	7.1	4.4	4.3	4.4	4.4	4.4	4.4	8.2	7.7	7.4	4.5	4.4	4.4	8	7.5	7.3		4.4	4.4	4.4	105
110	4.9	4.9		7.4	7.1	6.9	4.2	4.1	4.2	4.2	4.1	4.1	7.8	7.4	7.1	4.3	4.2	4.2	7.7	7.2	7		4.2	4.2	4.2	110
115				7.1	6.8	6.6	3.9	3.9	3.9	4	3.9	3.9	7.4	7.1	6.9	4	4	4	7.2	7	6.8		4	4	4	115
120				6.8	6.5	6.4	3.7	3.7	3.8	3.7	3.7	3.7	7	6.9	6.7	3.8	3.8	3.8	6.9	6.8	6.6		3.9	3.8	3.8	120
125				6.5	6.3	6.2	3.5	3.5	3.6	3.5	3.5	3.5	6.6	6.5	6.5	3.6	3.6	3.7	6.4	6.4	6.4		3.7	3.6	3.7	125
130				6.3	6	5.9	3.3	3.3	3.4	3.3	3.3	3.4	6.2	6.2	6.2	3.4	3.5	3.5	5.7	6.1	6.1		3.5	3.5	3.5	130
135				6	5.9	5.8	3.2	3.1	3.2	3.2	3.2	3.2	5.7	5.9	5.9	3.3	3.3	3.3	5.3	5.7	5.8		3.4	3.4	3.4	135
140				5.5	5.7	5.6	3	3	3	3	3	3	5.2	5.6	5.6	3.1	3.1	3.2	5	5.1	5.4		3.2	3.2	3.2	140
145				5.1	5.4	5.5	2.8	2.9	2.9	2.8	2.8	2.9	4.7	5	5.3	3	3	3	4.6	4.9	4.9		3.1	3.1	3.1	145
150				4.6	5	5.1	2.7	2.7	2.7	2.6	2.7	2.7	4.4	4.6	4.7	2.8	2.8	2.9	4.2	4.5	4.7		2.9	2.9	3	150
155				4.1	4.5	4.6	2.6	2.6	2.6	2.5	2.5	2.5	4.2	4.3	4.3	2.7	2.7	2.7	3.7	4.1	4.3		2.8	2.8	2.8	155
160				3.6	4	4.1	2.4	2.5	2.5	2.3	2.4	2.4	3.8	4.1	4.1	2.5	2.6	2.6	3.5	3.6	3.8		2.7	2.7	2.7	160
165				3.2	3.5	3.6	2.3	2.3	2.3	2.2	2.2	2.2	3.4	3.7	3.8	2.4	2.4	2.5	3.3	3.4	3.5		2.5	2.6	2.6	165
170				2.8	3	3.1	2.2	2.2	2.2	2	2.1	2.1	2.9	3.2	3.3	2.3	2.3	2.3	3	3.2	3.3		2.4	2.4	2.5	170
175				2.4	2.6	2.6	2	2.1	2.1	1.9	1.9	1.9	2.7	2.8	2.9	2.1	2.2	2.2	2.6	2.9	3		2.2	2.3	2.3	175
180				2.1	2.2		1.9	2	2	1.8	1.8	1.8	2.6	2.6	2.6	2	2	2.1	2.3	2.5	2.6		2.1	2.2	2.2	180
185							1.8	1.8		1.7	1.7	1.7	2.4	2.5	2.5	1.9	1.9	1.9	2.2	2.3	2.3		2	2	2.1	185
190										1.6	1.6		2.1	2.2	2.1	1.8	1.8	1.8	2	2.1	2.2		1.8	1.9	1.9	190
195													2	2		1.7	1.7	1.7	1.8	1.9	1.9		1.7	1.7	1.8	195
200																1.6	1.7		1.5	1.6	1.6		1.5	1.6	1.6	200

t_197_004_02001_00_000

Lifting capacities

Forces de levage



	144 ft + 46 ft			148 ft + 46 ft			154 ft + 46 ft			156 ft + 46 ft			160 ft + 46 ft			166 ft + 46 ft			168 ft + 46 ft			170 ft + 46 ft			
	0°	20°	40°	0°	20°	40°	0°	20°	40°	0°	20°	40°	0°	20°	40°	0°	20°	40°	0°	20°	40°	0°	20°	40°	
34	7.3			11.5																				34	
36	7.3			11.5			6.9			6.7			9.1											36	
38	7.3			11.5			6.9			6.7			9.1			6.2								38	
40	7.3			11.5			6.9			6.7			9.1			6.2			6			5.8		40	
45	7.2			11.3			6.9			6.7			9.2			6.2			6			5.9		45	
50	7	7		11	10.5		6.7	6.7		6.6			9.1	9		6.2			6			5.9		50	
55	6.8	6.8		10.6	10.1		6.6	6.6		6.4	6.4		9.1	8.8		6.1	6.1		5.9	5.9		5.8	5.8	55	
60	6.6	6.6	6.5	10.3	9.8	9.3	6.4	6.4		6.3	6.3		8.9	8.6	8.4	5.9	5.9		5.8	5.8		5.7	5.7	60	
65	6.4	6.3	6.2	10	9.4	9	6.2	6.2	6.1	6.1	6.1	6.1	8.7	8.4	8.2	5.8	5.8	5.8	5.7	5.7	5.6	5.6	5.6	5.5	65
70	6.1	6	5.9	9.7	9.1	8.7	6	5.9	5.9	5.9	5.9	5.9	8.5	8.2	8	5.6	5.6	5.7	5.5	5.5	5.6	5.4	5.4	5.5	70
75	5.9	5.7	5.7	9.3	8.8	8.4	5.8	5.7	5.6	5.7	5.6	5.6	8.3	8	7.8	5.5	5.4	5.4	5.4	5.3	5.4	5.3	5.3	5.3	75
80	5.6	5.5	5.4	9.1	8.5	8.1	5.6	5.5	5.4	5.5	5.4	5.3	8.1	7.8	7.5	5.3	5.3	5.3	5.2	5.2	5.2	5.1	5.1	5.1	80
85	5.4	5.2	5.2	8.8	8.2	7.9	5.3	5.2	5.2	5.3	5.2	5.1	7.9	7.5	7.3	5.1	5.1	5.1	5	5	5	5	5	4.9	85
90	5.1	5	5	8.4	7.9	7.6	5.1	5	5	5.1	5	4.9	7.7	7.3	7.1	5	4.9	4.9	4.9	4.8	4.8	4.8	4.8	4.8	90
95	4.9	4.8	4.8	8.1	7.7	7.4	4.9	4.8	4.8	4.9	4.7	4.7	7.4	7.1	6.9	4.8	4.7	4.7	4.7	4.6	4.6	4.7	4.6	4.6	95
100	4.7	4.6	4.6	7.8	7.4	7.2	4.7	4.6	4.6	4.7	4.6	4.5	7.1	6.9	6.7	4.6	4.5	4.5	4.5	4.5	4.4	4.5	4.4	4.4	100
105	4.4	4.4	4.4	7.6	7.2	7	4.5	4.4	4.4	4.5	4.4	4.4	6.9	6.7	6.6	4.4	4.4	4.3	4.4	4.3	4.3	4.3	4.3	4.2	105
110	4.2	4.2	4.2	7.3	6.9	6.7	4.3	4.2	4.2	4.3	4.2	4.2	6.6	6.5	6.4	4.2	4.2	4.1	4.2	4.2	4.1	4.2	4.1	4.1	110
115	4	4	4	7.1	6.7	6.5	4.1	4	4	4.1	4	4	6.3	6.3	6.2	4.1	4	4	4	4	4	4	4	3.9	115
120	3.9	3.8	3.8	6.4	6.5	6.3	3.9	3.9	3.9	3.9	3.8	3.9	6.1	6.1	6.1	3.9	3.9	3.8	3.9	3.8	3.8	3.9	3.8	3.8	120
125	3.7	3.6	3.7	5.9	6.2	6.2	3.7	3.7	3.7	3.7	3.7	3.7	5.6	5.9	5.9	3.8	3.7	3.7	3.7	3.7	3.7	3.7	3.7	3.7	125
130	3.5	3.5	3.5	5.6	5.7	5.9	3.6	3.6	3.6	3.6	3.5	3.5	5	5.6	5.7	3.6	3.6	3.6	3.6	3.5	3.5	3.6	3.5	3.5	130
135	3.4	3.3	3.4	5.1	5.5	5.5	3.5	3.4	3.4	3.4	3.4	3.4	4.7	5.1	5.4	3.5	3.4	3.4	3.4	3.4	3.4	3.4	3.4	3.4	135
140	3.2	3.2	3.2	4.6	5.1	5.3	3.3	3.3	3.3	3.3	3.3	3.3	4.5	4.6	4.9	3.3	3.3	3.3	3.3	3.3	3.3	3.3	3.3	3.3	140
145	3	3.1	3.1	4.2	4.6	4.9	3.2	3.1	3.2	3.2	3.1	3.2	4.2	4.4	4.4	3.2	3.2	3.2	3.2	3.1	3.2	3.2	3.1	3.2	145
150	2.9	2.9	2.9	4	4.1	4.4	3	3	3	3	3	3	3.7	4.1	4.2	3.1	3	3.1	3	3	3	3	3	3	150
155	2.7	2.8	2.8	3.7	3.9	4	2.9	2.9	2.9	2.9	2.9	2.9	3.2	3.7	4	3	2.9	3	2.9	2.9	2.9	2.9	2.9	2.9	155
160	2.5	2.6	2.7	3.3	3.7	3.8	2.8	2.8	2.8	2.7	2.8	2.8	2.9	3.2	3.5	2.8	2.8	2.9	2.8	2.8	2.8	2.8	2.8	2.8	160
165	2.4	2.5	2.5	2.8	3.2	3.5	2.6	2.6	2.7	2.5	2.6	2.7	2.8	2.8	3	2.7	2.7	2.8	2.6	2.7	2.7	2.6	2.7	2.7	165
170	2.2	2.3	2.4	2.6	2.8	3	2.5	2.5	2.6	2.4	2.5	2.5	2.5	2.7	2.7	2.5	2.6	2.6	2.4	2.6	2.6	2.4	2.5	2.6	170
175	2.1	2.1	2.2	2.5	2.5	2.5	2.4	2.4	2.5	2.2	2.3	2.4	2.1	2.5	2.6	2.1	2.4	2.5	2.1	2.4	2.5	2	2.4	2.4	175
180	1.9	2	2	2.4	2.4	2.4	2.3	2.3	2.4	2.1	2.2	2.2	1.7	2.1	2.3	1.7	2.1	2.3	1.7	2.1	2.2	1.6	2	2.2	180
185	1.8	1.8	1.9	2	2.3	2.3	2	2.2	2.2	1.9	2	2.1	1.3	1.7	1.9	1.3	1.7	1.9		1.7	1.9		1.6	1.8	185
190	1.6	1.7	1.7	1.7	1.9	2	1.6	1.9	2	1.6	1.8	1.9						1.5			1.5			1.4	190
195	1.5	1.6	1.6	1.4	1.6	1.6						1.5	1.6												195
200	1.4	1.4	1.4																						200

t_197_004_02001_00_000

Lifting capacities

Forces de levage

TVK



	172 ft + 46 ft			178 ft + 46 ft			182 ft + 46 ft			184 ft + 46 ft			186 ft + 46 ft			191 ft + 46 ft			195 ft + 46 ft			197 ft + 46 ft						
	0°	20°	40°	0°	20°	40°	0°	20°	40°	0°	20°	40°	0°	20°	40°	0°	20°	40°	0°	20°	40°	0°	20°	40°				
	K 35 ft																											
40	7.3																											40
45	7.3			5.6			5.2			5.6			5.4			4.3			3.5			3.2						45
50	7.3			5.6			5.3			5.6			5.5			4.6			3.8			3.4						50
55	7.3	7.3		5.6			5.3			5.6			5.4			4.7			4			3.7						55
60	7.2	7.2		5.5	5.5		5.2	5.2		5.5	5.5		5.4	5.4		4.7	5		4.2	4.5		3.9	4.2					60
65	7.2	7.2	6.8	5.4	5.4		5.1	5.1		5.4	5.4		5.3	5.3		4.8	4.9		4.2	4.5		4	4.3					65
70	7.1	7	6.8	5.3	5.3	5.3	5	5.1	5	5.3	5.3	5.3	5.2	5.2	5.2	4.8	4.8	4.8	4.3	4.5		4.1	4.3					70
75	6.9	6.9	6.7	5.2	5.2	5.2	4.9	5	4.9	5.2	5.2	5.2	5.1	5.1	5.1	4.7	4.8	4.7	4.3	4.5	4.4	4.1	4.4	4.3				75
80	6.8	6.8	6.7	5	5	5.1	4.8	4.8	4.9	5.1	5.1	5.1	5	5	5	4.7	4.6	4.6	4.4	4.5	4.4	4.1	4.4	4.3				80
85	6.7	6.6	6.5	4.9	4.9	4.9	4.7	4.7	4.8	5	4.9	5	4.9	4.9	4.9	4.6	4.6	4.6	4.4	4.4	4.4	4.2	4.3	4.3				85
90	6.5	6.4	6.4	4.8	4.7	4.8	4.6	4.6	4.6	4.9	4.8	4.8	4.8	4.7	4.7	4.4	4.5	4.5	4.3	4.3	4.3	4.1	4.2	4.2				90
95	6.3	6.2	6.2	4.6	4.6	4.6	4.4	4.4	4.5	4.7	4.6	4.6	4.7	4.6	4.6	4.3	4.3	4.4	4.2	4.2	4.2	4.1	4.1	4.1				95
100	6.1	6.1	6.1	4.5	4.4	4.4	4.3	4.3	4.3	4.6	4.5	4.5	4.5	4.4	4.4	4.2	4.2	4.3	4.1	4.1	4.1	4	4	4.1				100
105	5.9	5.9	5.9	4.3	4.3	4.3	4.2	4.2	4.2	4.4	4.3	4.3	4.4	4.3	4.3	4.1	4.1	4.1	4	4	4	3.9	3.9	4				105
110	5.7	5.7	5.7	4.2	4.2	4.1	4.1	4	4	4.3	4.2	4.2	4.2	4.2	4.1	4	4	4	3.8	3.9	3.9	3.8	3.8	3.9				110
115	5.5	5.5	5.5	4	4	4	3.9	3.9	3.9	4.1	4.1	4	4.1	4	4	3.9	3.9	3.9	3.8	3.7	3.8	3.7	3.7	3.7				115
120	5.2	5.3	5.3	3.9	3.9	3.8	3.8	3.8	3.8	4	3.9	3.9	4	3.9	3.9	3.7	3.7	3.8	3.6	3.6	3.7	3.6	3.6	3.6				120
125	5.1	5.1	5.1	3.8	3.7	3.7	3.7	3.7	3.6	3.8	3.8	3.8	3.8	3.8	3.7	3.6	3.6	3.7	3.5	3.5	3.6	3.5	3.5	3.5				125
130	4.8	4.9	5	3.6	3.6	3.6	3.6	3.5	3.5	3.7	3.6	3.6	3.7	3.6	3.6	3.5	3.5	3.5	3.4	3.4	3.5	3.4	3.4	3.4				130
135	4.4	4.7	4.8	3.5	3.4	3.4	3.4	3.4	3.4	3.5	3.5	3.5	3.6	3.5	3.5	3.4	3.4	3.4	3.3	3.3	3.4	3.3	3.3	3.3				135
140	3.8	4.4	4.6	3.3	3.3	3.3	3.3	3.3	3.3	3.4	3.4	3.4	3.4	3.4	3.4	3.3	3.3	3.3	3.2	3.2	3.3	3.2	3.2	3.2				140
145	3.3	3.9	4.2	3.2	3.2	3.2	3.2	3.2	3.2	3.2	3.3	3.3	3.1	3.3	3.3	3.1	3.2	3.2	2.9	3.1	3.2	2.8	3.1	3.1				145
150	3.2	3.4	3.8	3.1	3.1	3.1	3.1	3.1	3.1	2.8	3.2	3.2	2.7	3.1	3.2	2.7	3	3.1	2.6	3	3.1	2.4	3	3				150
155	3.1	3.1	3.3	3	3	3	2.9	3	2.9	2.4	2.8	3.1	2.2	2.8	3	2.3	2.8	2.9	2.1	2.6	2.9	2	2.5	2.9				155
160	2.8	2.9	3	2.7	2.9	2.9	2.5	2.8	2.8	1.9	2.4	2.7	1.8	2.3	2.7	1.9	2.4	2.7	1.6	2.2	2.6	1.5	2.1	2.5				160
165	2.4	2.8	2.9	2.3	2.6	2.8	2.1	2.6	2.7	1.4	2	2.4		1.9	2.2	1.3	2	2.3		1.8	2.2		1.7	2				165
170	1.9	2.4	2.7	1.9	2.3	2.5	1.7	2.2	2.5		1.5	1.9		1.3	1.8		1.5	1.9			1.7			1.6				170
175	1.5	2	2.2	1.5	1.9	2.2		1.8	2.1			1.4						1.4										175
180		1.6	1.8		1.5	1.8																						180
185			1.4			1.4																						185

t_197_004_02001_00_000

Lifting capacities

Forces de levage



	38 ft + 46 ft			111 ft + 46 ft			115 ft + 46 ft			117 ft + 46 ft			123 ft + 46 ft			130 ft + 46 ft			135 ft + 46 ft			142 ft + 46 ft			
	K 62 ft																								
	0°	20°	40°	0°	20°	40°	0°	20°	40°	0°	20°	40°	0°	20°	40°	0°	20°	40°	0°	20°	40°	0°	20°	40°	
15	15.7																							15	
16	15.6																							16	
17	15.5																							17	
18	15.5																							18	
19	15.4																							19	
20	15.4																							20	
22	15.2																							22	
24	15.1																							24	
26	15																							26	
28	14.9																							28	
30	14.7			10.7																				30	
32	14.4			10.6								10.5												32	
34	14.2			10.5			6.7			6.4			10.4					9.2						34	
36	14			10.5			6.7			6.5			10.4			5.8			9.2					36	
38	13.7	10.6		10.4			6.8			6.5			10.3			5.9			9.2					38	
40	13.2	10.4		10.4			6.8			6.5			10.2			6			9.2			5		40	
45	12	9.9		10.2			6.6			6.4			10.1			6			9.1			5.3		45	
50	10.8	9.6		9.9			6.4			6.2			10			5.8			9			5.2		50	
55	9.7	9	7.8	9.6	8.6		6.2			6			9.7	8.8		5.6			8.8			5		55	
60	8.8	8.4	7.6	9.2	8.2		5.9	5.7		5.8	5.5		9.4	8.5		5.4			8.5	7.9		4.9		60	
65	8.1	7.8	7.4	8.8	7.9		5.7	5.6		5.6	5.5		9	8.1		5.3	5		8.3	7.6		4.8	4.5	65	
70	7.5	7.2	7	8.4	7.5	6.9	5.4	5.4		5.4	5.3		8.6	7.7		5.1	5		8	7.3		4.6	4.5	70	
75	6.9	6.7	6.6	8	7.2	6.7	5.2	5.1	5	5.1	5		8.3	7.4	6.8	5	4.9		7.7	7	6.5	4.6	4.4	75	
80	6.4	6.2	6.2	7.6	6.9	6.4	4.9	4.8	4.8	4.8	4.8	4.8	7.9	7.1	6.6	4.8	4.7	4.6	7.4	6.8	6.3	4.5	4.4	80	
85	5.9	5.8	5.8	7.3	6.6	6.1	4.6	4.6	4.6	4.6	4.5	4.6	7.6	6.8	6.3	4.5	4.4	4.5	7.2	6.5	6.1	4.3	4.3	4.1	85
90	5.5	5.5	5.4	6.9	6.3	5.9	4.4	4.3	4.4	4.3	4.3	4.3	7.3	6.5	6.1	4.3	4.2	4.3	6.9	6.2	5.9	4.2	4.1	4.1	90
95	5.2	5.1	5.1	6.6	6	5.7	4.1	4.1	4.1	4.1	4	4.1	6.9	6.3	5.9	4.1	4	4	6.6	6	5.7	4	3.9	3.9	95
100	4.8	4.8	4.8	6.3	5.8	5.5	3.9	3.9	3.9	3.8	3.8	3.9	6.6	6	5.6	3.9	3.8	3.9	6.4	5.8	5.5	3.8	3.7	3.8	100
105	4.5	4.5	4.5	6	5.6	5.3	3.7	3.7	3.7	3.6	3.7	3.7	6.3	5.8	5.4	3.7	3.7	3.7	6.1	5.6	5.3	3.6	3.5	3.6	105
110	4.2	4.2	4.3	5.7	5.3	5.1	3.4	3.5	3.5	3.4	3.5	3.5	6	5.5	5.3	3.5	3.5	3.5	5.9	5.4	5.1	3.5	3.4	3.4	110
115	4	4	4	5.5	5.1	4.9	3.2	3.3	3.3	3.2	3.3	3.3	5.8	5.3	5.1	3.3	3.3	3.3	5.6	5.2	5	3.3	3.3	3.3	115
120	3.8	3.7	3.8	5.3	4.9	4.7	3.1	3.1	3.2	3.1	3.1	3.2	5.5	5.1	4.9	3.1	3.1	3.2	5.4	5	4.8	3.1	3.1	3.1	120
125	3.5	3.5	3.6	5.1	4.7	4.6	2.9	2.9	3	2.9	2.9	3	5.3	4.9	4.7	3	3	3	5.2	4.8	4.7	3	3	3	125
130	3.3	3.3	3.4	4.8	4.6	4.4	2.7	2.8	2.8	2.7	2.8	2.8	5.1	4.8	4.6	2.8	2.8	2.9	5	4.7	4.5	2.8	2.8	2.9	130
135	3.2	3.2		4.6	4.4	4.3	2.6	2.6	2.7	2.6	2.6	2.7	4.9	4.6	4.4	2.7	2.7	2.7	4.9	4.5	4.4	2.7	2.7	2.7	135
140				4.4	4.2	4.1	2.4	2.5	2.5	2.4	2.5	2.5	4.7	4.4	4.3	2.5	2.5	2.6	4.6	4.4	4.2	2.6	2.6	2.6	140
145				4.3	4.1	4	2.3	2.3	2.4	2.3	2.3	2.4	4.5	4.3	4.2	2.4	2.4	2.5	4.4	4.2	4.1	2.4	2.4	2.5	145
150				4.1	3.9	3.9	2.1	2.2	2.3	2.2	2.2	2.3	4.2	4.1	4	2.3	2.3	2.3	4	4.1	4	2.3	2.3	2.4	150
155				4	3.8	3.8	2	2.1	2.1	2	2.1	2.1	4	4	3.9	2.1	2.2	2.2	3.8	3.9	3.9	2.2	2.2	2.2	155
160				3.8	3.7	3.6	1.9	2	2	1.9	2	2	3.7	3.8	3.8	2	2.1	2.1	3.5	3.7	3.8	2.1	2.1	2.1	160
165				3.7	3.6	3.5	1.8	1.8	1.9	1.8	1.9	1.9	3.4	3.6	3.6	1.9	1.9	2	3.2	3.5	3.6	2	2	2.1	165
170				3.4	3.5	3.4	1.7	1.7	1.8	1.7	1.8	1.8	3.2	3.4	3.5	1.8	1.8	1.9	2.8	3.4	3.4	1.9	1.9	2	170
175				3	3.4	3.4	1.6	1.6	1.7	1.5	1.6	1.7	3	3.1	3.3	1.7	1.7	1.8	2.6	3	3.3	1.8	1.8	1.8	175
180				2.6	3.1	3.3	1.5	1.5	1.5	1.4	1.5	1.6	2.6	3	3.1	1.6	1.6	1.7	2.5	2.6	3	1.6	1.7	1.8	180
185				2.3	2.7	2.8	1.3	1.4	1.4		1.4	1.4	2.3	2.7	2.9	1.5	1.5	1.6	2.3	2.4	2.6	1.5	1.6	1.7	185
190				1.9	2.3	2.4			1.3				2	2.4	2.6	1.4	1.4	1.5	2	2.3	2.4	1.4	1.5	1.6	190
195				1.6	1.9	2							1.8	2	2.2			1.4	1.6	2.1	2.2		1.4	1.5	195
200				1.3	1.6	1.5							1.7	1.8	1.8				1.4	1.8	2			1.3	200
205													1.5	1.7	1.7					1.5	1.6				205
210													1.5	1.5	1.5										210

t_197_004_03001_00_000

Lifting capacities

Forces de levage



Lifting height (ft)	144 ft + 46 ft			148 ft + 46 ft			154 ft + 46 ft			156 ft + 46 ft			160 ft + 46 ft			166 ft + 46 ft			168 ft + 46 ft			170 ft + 46 ft			Lifting height (ft)
	K 62 ft																								
	0°	20°	40°	0°	20°	40°	0°	20°	40°	0°	20°	40°	0°	20°	40°	0°	20°	40°	0°	20°	40°	0°	20°	40°	
38				7.9																					38
40	4.8			7.9																					40
45	5			7.9			4.5			4.1			6.3			3.2			2.9			2.7			45
50	5			7.8			4.7			4.4			6.4			3.5			3.1			2.9			50
55	4.9			7.7			4.7			4.5			6.4			3.7			3.4			3.1			55
60	4.8			7.5			4.6			4.5			6.4			3.9			3.6			3.3			60
65	4.7	4.4		7.3	6.7		4.5			4.4			6.2	5.7		4			3.8			3.5			65
70	4.6	4.4		7.2	6.7		4.4	4.2		4.3	4.1		6.1	5.7		4	3.8		3.8			3.7			70
75	4.5	4.3		7	6.5		4.3	4.1		4.2	4		6	5.6		3.9	3.7		3.8	3.6		3.7	3.6		75
80	4.4	4.3		6.8	6.3	5.9	4.2	4		4.1	4		5.9	5.6		3.9	3.7		3.7	3.6		3.6	3.5		80
85	4.3	4.2	4.1	6.6	6.1	5.7	4.2	4	3.8	4	3.9		5.8	5.5	5.1	3.8	3.7		3.7	3.6		3.6	3.5		85
90	4.1	4.1	4	6.4	5.9	5.6	4	4	3.8	3.9	3.9	3.8	5.7	5.4	5	3.7	3.6	3.5	3.6	3.6	3.4	3.5	3.5	3.3	90
95	3.9	3.9	3.9	6.2	5.7	5.4	3.9	3.9	3.8	3.8	3.8	3.7	5.6	5.3	5	3.7	3.6	3.4	3.5	3.5	3.4	3.5	3.4	3.3	95
100	3.8	3.7	3.7	6	5.5	5.2	3.8	3.7	3.7	3.7	3.7	3.7	5.5	5.1	4.9	3.6	3.6	3.4	3.5	3.5	3.3	3.4	3.4	3.3	100
105	3.6	3.5	3.6	5.8	5.3	5	3.6	3.5	3.6	3.6	3.5	3.5	5.3	5	4.8	3.5	3.5	3.4	3.4	3.4	3.3	3.4	3.3	3.3	105
110	3.4	3.4	3.4	5.5	5.1	4.9	3.4	3.4	3.4	3.4	3.4	3.4	5.2	4.8	4.6	3.4	3.3	3.3	3.3	3.3	3.3	3.3	3.3	3.2	110
115	3.3	3.2	3.3	5.3	5	4.8	3.3	3.2	3.3	3.3	3.2	3.2	5	4.7	4.5	3.2	3.2	3.2	3.2	3.1	3.2	3.1	3.1	3.2	115
120	3.1	3.1	3.1	5.2	4.8	4.6	3.1	3.1	3.1	3.1	3.1	3.1	4.9	4.6	4.4	3.1	3.1	3.1	3	3	3	3	3	3	120
125	2.9	3	3	5	4.7	4.5	3	3	3	3	3	3	4.7	4.4	4.3	3	2.9	3	2.9	2.9	2.9	2.9	2.9	2.9	125
130	2.8	2.8	2.9	4.8	4.5	4.4	2.9	2.9	2.9	2.8	2.8	2.9	4.6	4.3	4.2	2.8	2.8	2.8	2.8	2.8	2.8	2.8	2.8	2.8	130
135	2.7	2.7	2.7	4.6	4.4	4.2	2.7	2.7	2.7	2.7	2.7	2.7	4.4	4.2	4.1	2.7	2.7	2.7	2.7	2.7	2.7	2.7	2.7	2.7	135
140	2.5	2.6	2.6	4.3	4.2	4.1	2.6	2.6	2.6	2.6	2.6	2.6	4	4.1	4	2.6	2.6	2.6	2.6	2.6	2.6	2.5	2.6	2.6	140
145	2.4	2.4	2.5	4.2	4.1	4	2.5	2.5	2.5	2.5	2.5	2.5	3.7	3.9	3.9	2.5	2.5	2.5	2.5	2.4	2.5	2.4	2.4	2.5	145
150	2.3	2.3	2.4	3.9	4	3.9	2.4	2.4	2.4	2.3	2.3	2.4	3.5	3.8	3.8	2.3	2.4	2.4	2.4	2.3	2.4	2.4	2.3	2.4	150
155	2.2	2.2	2.2	3.4	3.8	3.8	2.3	2.3	2.3	2.2	2.2	2.3	3.2	3.5	3.7	2.3	2.3	2.3	2.3	2.2	2.3	2.2	2.2	2.3	155
160	2.1	2.1	2.1	3.2	3.6	3.7	2.1	2.1	2.2	2.1	2.1	2.2	2.9	3.3	3.6	2.2	2.2	2.2	2.1	2.1	2.2	2.1	2.1	2.2	160
165	2	2	2	3	3.4	3.6	2	2	2.1	2	2	2.1	2.5	3.2	3.3	2.1	2.1	2.1	2	2	2.1	2	2	2.1	165
170	1.8	1.9	1.9	2.7	3	3.4	1.9	2	2	1.9	1.9	2	2.1	2.9	3.2	2	2	2	1.9	2	2	1.9	2	2	170
175	1.7	1.8	1.8	2.4	2.8	3.1	1.8	1.9	1.9	1.8	1.9	1.9	1.9	2.5	3	1.9	1.9	1.9	1.8	1.9	1.9	1.8	1.9	1.9	175
180	1.5	1.7	1.7	2	2.6	2.8	1.8	1.8	1.8	1.7	1.8	1.8	1.8	2.1	2.7	1.8	1.8	1.8	1.7	1.8	1.8	1.7	1.8	1.8	180
185	1.4	1.6	1.6	1.7	2.3	2.6	1.7	1.7	1.7	1.5	1.7	1.7	1.7	1.8	2.3	1.6	1.7	1.8	1.5	1.7	1.7	1.6	1.7	1.7	185
190		1.4	1.5	1.6	1.9	2.3	1.6	1.6	1.6	1.3	1.6	1.6		1.7	1.8		1.6	1.7		1.6	1.7		1.6	1.7	190
195			1.4	1.5	1.6	1.9	1.4	1.5	1.6		1.4	1.5		1.5	1.6		1.5	1.6		1.4	1.6		1.4	1.6	195
200				1.5	1.5	1.5		1.4	1.5			1.4			1.5			1.5			1.5			1.5	200
205				1.4	1.5				1.4																205
210				1.3																					210

t_197_004_03001_00_000

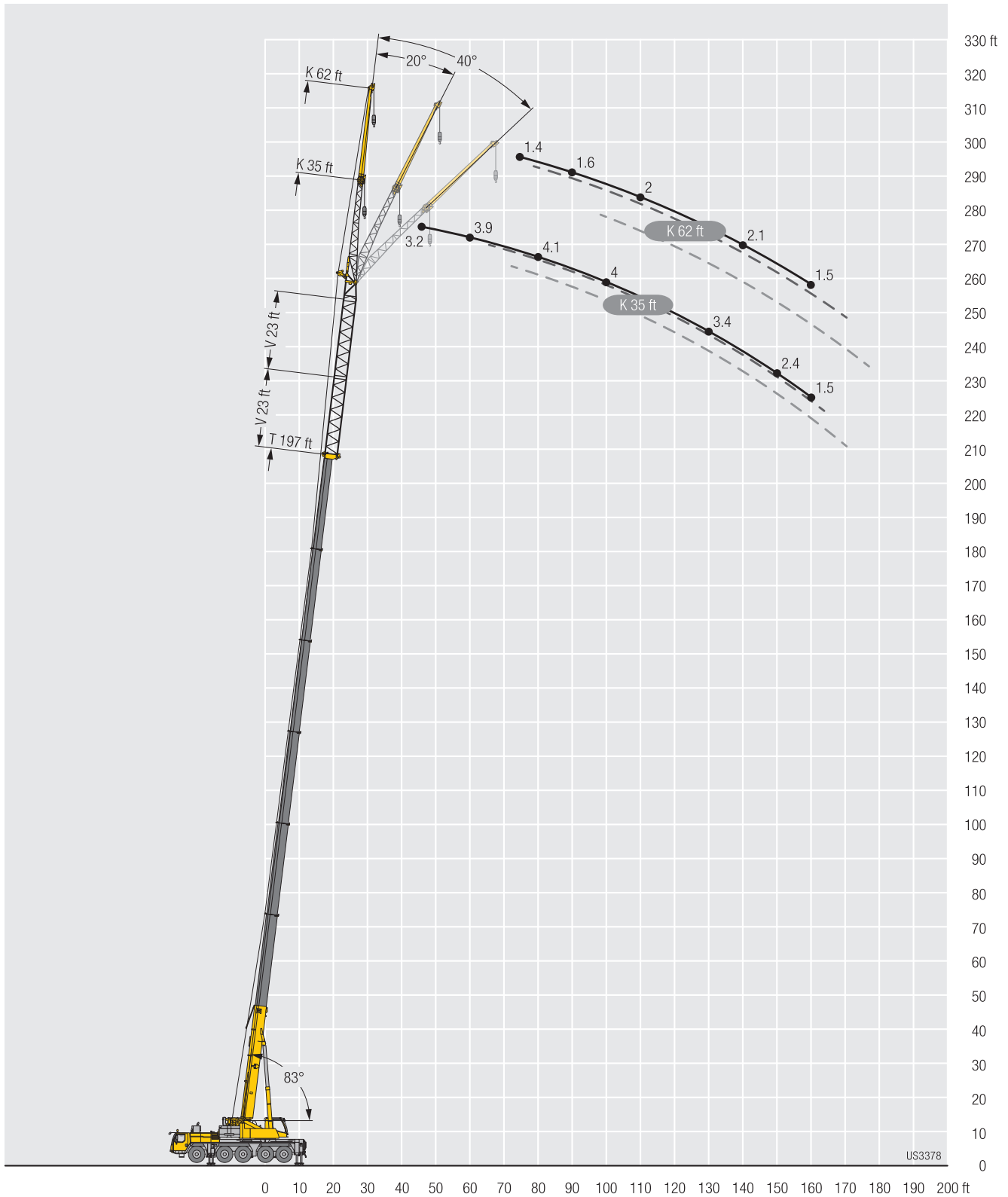
Lifting capacities Forces de levage



	172 ft + 46 ft			178 ft + 46 ft			182 ft + 46 ft			184 ft + 46 ft			186 ft + 46 ft			191 ft + 46 ft			195 ft + 46 ft			197 ft + 46 ft				
	K 62 ft																									
	0°	20°	40°	0°	20°	40°	0°	20°	40°	0°	20°	40°	0°	20°	40°	0°	20°	40°	0°	20°	40°	0°	20°	40°		
45	4.2			2.3																					45	
50	4.5			2.4			2			2.3			2.1			1.6									50	
55	4.6			2.5			2.1			2.4			2.2			1.7									55	
60	4.7			2.7			2.2			2.6			2.3			1.7			1.4						60	
65	4.7			2.9			2.3			2.7			2.5			1.8			1.4						65	
70	4.7	4.5		3.1			2.5			2.9			2.6			1.9			1.5						70	
75	4.7	4.5		3.2	3.4		2.6	3.1		3.1	3.5		2.8	3.3		2	2.5		1.5	1.9		1.4	1.7		75	
80	4.7	4.4		3.3	3.3		2.8	3.1		3.2	3.4		2.9	3.3		2.1	2.7		1.6	2		1.4	1.7		80	
85	4.6	4.4		3.4	3.3		2.9	3.2		3.3	3.4		3.1	3.3		2.2	2.8		1.7	2.2		1.5	1.9		85	
90	4.5	4.4	4.1	3.4	3.3		3.1	3.1		3.3	3.4		3.1	3.3		2.4	2.9		1.8	2.3		1.6	2.1		90	
95	4.4	4.3	4.1	3.3	3.3	3.1	3.1	3.1	3	3.4	3.4	3.2	3.2	3.3	3.2	2.5	2.9	2.8	1.9	2.5		1.7	2.2		95	
100	4.4	4.3	4.1	3.3	3.3	3.1	3.1	3.1	3	3.4	3.3	3.2	3.2	3.2	3.2	2.6	2.9	2.8	2	2.6	2.6	1.8	2.4	2.6	100	
105	4.3	4.3	4.1	3.2	3.2	3.1	3.1	3.1	3	3.3	3.3	3.2	3.2	3.2	3.2	2.7	2.9	2.8	2.2	2.7	2.6	1.9	2.5	2.5	105	
110	4.2	4.3	4.1	3.1	3.2	3.1	3	3	3	3.3	3.2	3.2	3.1	3.2	3.1	2.7	2.9	2.8	2.3	2.7	2.6	2	2.6	2.5	110	
115	4.1	4.2	4.1	3	3.1	3.1	3	3	3	3.2	3.1	3.1	3.1	3.1	3.1	2.8	2.9	2.8	2.4	2.7	2.6	2.1	2.6	2.5	115	
120	4.1	4.1	4	2.9	3	3	2.9	3	3	3.1	3	3.1	3	3	3	2.7	2.8	2.8	2.4	2.6	2.6	2.2	2.6	2.5	120	
125	4	4.1	4	2.9	2.9	2.9	2.8	2.8	2.9	3	2.9	3	2.9	2.9	2.9	2.6	2.8	2.8	2.4	2.6	2.6	2.2	2.5	2.5	125	
130	3.9	4	3.9	2.8	2.8	2.8	2.7	2.7	2.8	2.8	2.8	2.9	2.8	2.8	2.8	2.6	2.7	2.7	2.3	2.6	2.6	2.2	2.5	2.5	130	
135	3.8	3.8	3.8	2.7	2.7	2.7	2.6	2.6	2.7	2.7	2.7	2.8	2.7	2.7	2.7	2.5	2.6	2.6	2.3	2.5	2.5	2.2	2.5	2.5	135	
140	3.7	3.7	3.7	2.6	2.6	2.6	2.5	2.5	2.6	2.7	2.6	2.6	2.6	2.6	2.6	2.4	2.5	2.5	2.2	2.5	2.5	2.1	2.4	2.5	140	
145	3.4	3.6	3.6	2.5	2.5	2.5	2.4	2.4	2.5	2.5	2.5	2.6	2.5	2.5	2.5	2.4	2.4	2.4	2.2	2.4	2.4	2.1	2.3	2.4	145	
150	2.9	3.5	3.5	2.4	2.4	2.4	2.3	2.3	2.4	2.4	2.4	2.5	2.4	2.4	2.5	2.3	2.3	2.4	2.2	2.3	2.3	2.1	2.3	2.3	150	
155	2.5	3.3	3.4	2.3	2.3	2.3	2.3	2.3	2.3	2.3	2.3	2.4	2.2	2.3	2.4	2.1	2.3	2.3	2.1	2.2	2.3	2	2.2	2.2	155	
160	2.3	3	3.4	2.2	2.2	2.2	2.2	2.2	2.2	2	2.2	2.3	1.8	2.2	2.3	1.9	2.2	2.2	1.7	2.1	2.2	1.5	2.1	2.2	160	
165	2.2	2.6	3.1	2.1	2.1	2.1	2.1	2.1	2.1	1.6	2.1	2.2	1.3	2.1	2.2	1.4	2.1	2.1		2	2.1		2	2.1	165	
170	2	2.2	2.8	1.9	2	2	1.7	2	2		2	2.1		1.9	2.1		1.9	2		1.9	2		1.7	2	170	
175	1.7	2	2.4	1.6	1.9	2	1.4	1.9	1.9		1.7	2		1.6	2		1.7	1.9		1.4	1.9			1.9	175	
180		1.9	2		1.8	1.9		1.8	1.9			1.9			1.8			1.8			1.8			1.6		180
185		1.7	1.8		1.7	1.8		1.4	1.8			1.5			1.4			1.5								185
190		1.3	1.7			1.7			1.6																	190
195			1.5			1.4																				195

L_197_004_03001_00_000

Lifting heights Hauteurs de levage



Lifting capacities

Forces de levage

TK



85%

	38	50	62	74	87	99	111	123	127	135	139	148	154	160	168	172	178	182	184	191	193	195	197			
	ft																									
	K 9.5 ft																									
10	64.1	64.1	64.1																						10	
11	64.1	64.1	64.1	64.1																						11
12	64.1	64.1	64.1	64.1																						12
13	64.1	64.1	64.1	64.1																						13
14	64.1	64.1	64.1	64.1	64.1																					14
15	64.1	64.1	64.1	64.1	64.1	64.1																				15
16	64.1	64.1	64.1	64.1	64.1	64.1	64.1																			16
17	64.1	64.1	64.1	64.1	64.1	64.1	64.1																			17
18	64.1	64.1	64.1	64.1	64.1	64.1	64.1																			18
19	64.1	64.1	64.1	64.1	64.1	64.1	64.1	64.1																		19
20	64.1	64.1	64.1	64.1	64.1	64.1	64.1	64.1																		20
22	64.1	64.1	64.1	64.1	64.1	64.1	64.1	64.1	64.1																	22
24	64.1	64.1	64.1	64.1	64.1	64.1	64.1	64.1	57.4	44.7	34.9															24
26	64.1	64.1	64.1	64.1	64.1	64.1	64.1	64.1	56.1	43.5	42.7	40.1														26
28	64.1	64.1	64.1	64.1	64.1	64.1	64.1	64.1	54.8	42.3	41.8	39.3	37.1													28
30	64.1	64.1	64.1	64.1	64.1	64.1	63.9	53.4	41.2	40.9	38.5	36.6	33.9	30.2												30
32	64.1	64.1	64.1	64.1	64.1	64.1	62.4	51.9	40.1	40	37.8	36.1	33.7	30	21.3	24.4										32
34	64.1	64.1	64.1	64.1	64.1	64.1	60.8	50.5	39.1	39.1	37	35.6	33.4	29.8	21.1	24.2	19.9									34
36	62.8	63.6	63.6	63.1	62.3	61.7	59.2	48.9	38.1	38.1	36.2	35	33	29.6	20.9	24	19.7	18.6	19.8	17.6	16.9	14.9	14.4			36
38	58.6	59.5	60	59.8	59.3	57.8	56.9	47.4	37.1	37.1	35.5	34.4	32.5	29.2	20.6	23.8	19.5	18.5	19.7	17.5	16.8	14.8	14.4			38
40	54.6	55.6	56.1	56	55.5	55.7	53.5	45.9	36.2	36.2	34.7	33.8	32	28.9	20.2	23.6	19.3	18.3	19.5	17.4	16.7	14.7	14.4			40
45		47	47.6	48	48.4	47.8	46.2	42.4	34.2	34	32.8	32.1	30.2	27.8	19.3	22.9	18.6	17.8	19.1	17.1	16.5	14.5	14.2			45
50		40.3	40.9	41.9	41.1	40.1	38.1	32.4	32.2	30.7	30.2	28.2	26.6	18.4	22.1	18	17.3	18.6	16.6	16.2	14.3	14				50
55			36.3	36.6	36.3	35.7	34.8	34.1	30.6	30.5	28.9	28.3	26.3	25.4	17.4	21.2	17.2	16.6	18	16.1	15.7	14.1	13.8			55
60			32	32.2	31.9	31.3	30.5	30	28.8	28.8	27.2	26.5	24.6	24	16.4	20.2	16.5	15.9	17.2	15.6	15.3	13.7	13.5			60
65			28.1	28.5	28.3	27.7	26.8	26.8	26.6	26.2	25.2	24.7	23	22.6	15.5	19.2	15.7	15.2	16.5	15	14.7	13.3	13.1			65
70				25.4	25.2	24.6	24.2	24.1	23.6	23.1	22.6	22.4	21.4	21.2	14.7	18.3	15	14.4	15.8	14.5	14.1	12.9	12.7			70
75				22.8	22.5	21.9	22.4	21.3	20.8	20.9	19.9	20.4	19.5	19.6	13.8	17.5	14.3	13.8	15.1	13.9	13.5	12.4	12.3			75
80					20.2	20.3	20	18.9	18.4	19	17.5	18.4	17.2	17.6	13	16.7	13.7	13.1	14.4	13.3	12.9	11.9	11.8			80
85					18.3	18.7	17.9	17.7	16.4	17	15.5	16.4	15.2	16.1	12.2	15.6	13	12.4	13.7	12.8	12.3	11.5	11.2			85
90						16.9	16.1	16.1	14.6	15.2	13.7	15.2	13.4	14.7	11.6	13.8	12.4	11.7	13	12.2	11.8	11	10.7			90
95						15.4	14.5	14.5	13	13.8	12.1	13.8	11.9	13.2	11	12.4	11.7	11.2	12.2	11.7	11.2	10.5	10.2			95
100						14	13.1	13.1	11.6	12.9	10.7	12.5	10.6	11.7	10.5	11.7	11.2	10.6	10.9	11	10.6	10.1	9.7			100
105							11.9	11.9	10.3	11.9	9.6	11.2	10.1	10.9	10	10.5	10.5	10.2	9.8	9.8	9.8	9.8	9.3			105
110							11.6	10.7	9.8	11	9	10.1	9.6	10	9.5	9.5	9.5	9.4	8.8	8.9	8.9	9	8.7			110
115								10.1	9.4	10	8.6	9.5	9.2	9.2	9.1	8.7	8.7	8.6	8	8.1	8.1	8.2	8.1			115
120								9.7	9.1	9.2	8.2	8.9	8.8	8.4	8.4	7.9	8	7.9	7.3	7.4	7.3	7.4	7.3			120
125								9.1	8.9	8.5	7.9	8.3	8.3	7.7	7.8	7.3	7.3	7.2	6.6	6.7	6.7	6.7	6.6			125
130									6.6	7.9	7.5	7.7	7.7	7.1	7.1	6.6	6.7	6.6	6	6.1	6.1	6.1	6			130
135										7.4	7.3	7.1	7.1	6.5	6.6	6.1	6.1	6	5.4	5.5	5.5	5.6	5.5			135
140											7		6.6	6.6	6	6	5.6	5.6	5.5	4.9	5	5	5	4.9		140
145													6.1	6.1	5.5	5.6	5.1	5.1	5	4.4	4.5	4.5	4.6	4.5		145
150													5.7	5.7	5.1	5.1	4.6	4.7	4.6	4	4.1	4	4.1	4		150
155														5.4	4.7	4.7	4.2	4.3	4.2	3.6	3.6	3.6	3.7	3.6		155
160															4.3	4.3	3.8	3.9	3.8	3.1	3.3	3.2	3.3	3.2		160
165																4	3.4	3.5	3.4	2.7	2.8	2.8	2.9	2.8		165
170																3.6	3	3.1	3	2.3	2.4	2.4	2.5	2.3		170
175																		2.7	2.6	1.9	2	2	1.6			175
180																			2.4	2.3	1.5					180

t_197_006_12001_00_000

Lifting heights Hauteurs de levage

TK

