



LUXEMOTOR 98 FT DUTCH BARGE

SARGIA II

ASKING PRICE

£775,000

MOORING LOCATION

St Mary's Wandsworth Pier,
Battersea SW11



MEET

SARGIA II

Specification

| | |
|---------------|--|
| Designer | Jan Visser (Dutch Marine Architect) & Current Owners |
| Builder | SRF in Harlingen, Netherlands |
| Year of Build | Completed in 2016 |
| Certification | TRIWV Certified |
| Design | Fully equipped for European inland waterways |
| Length | 29.5m/98.09 ft |
| Beam | 4.95m |
| Height | 3.55m |
| Internal area | 1,344 sq.ft / 124.9 sq.m. |
| Bedrooms | Three |





Berth Location

Sargia II is being sold with a rare opportunity, on her present leasehold fully serviced berth on St Mary's Wandsworth pier, with 113 yrs left on the lease and a total annual service fee of £1,324.00.

Exterior Features

SARGIA II's thoughtfully designed upper deck provides panoramic views of the river. Whether you are dining or entertaining from within the vessel or on the substantial wooden floored rear deck, you'll have multiple outdoor areas to suit every occasion and weather condition.



Large wheelhouse on the upper deck - Full 360° panoramic views with a stylish dining and entertaining area

Substantial rear deck with Teak decking, built in bench seating and separate cupboard to store and act as a base for a BBQ

Integrated storage around stern (two of the spaces designed to store Brompton bicycles)

Direct connection to pontoon facilities allows for mains electricity, automatic pump out of sewage, mains water and a telephone line.

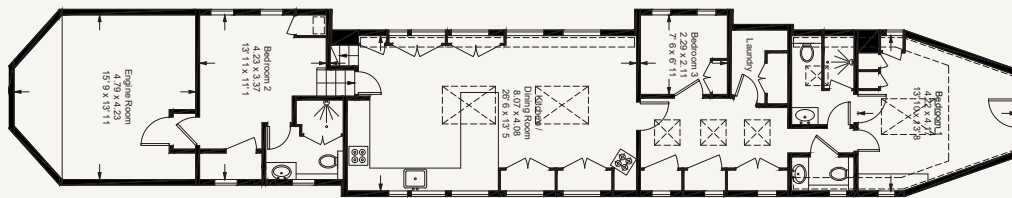


Interior Features

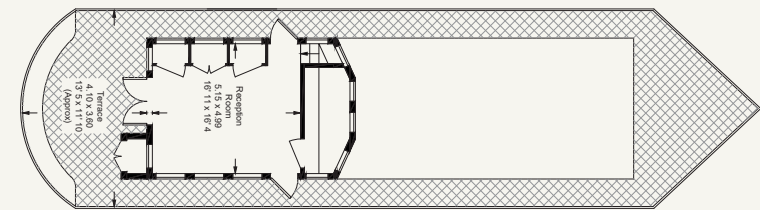
Sargia II's Scandinavian-inspired design and layout allows for a fully functioning, luxury floating home. The lower deck features a skylit open plan living room and kitchen, with premium appliances, three spacious bedrooms (two of which are en-suite) ample storage throughout and an array of windows to allow for plentiful natural light throughout.

- Open-plan living area: Wood stove, a concealed pop-up TV cabinet, wooden flooring with integrated storage hatches
- Abundant natural light in the living area and kitchen with skylights and vast windows
- Bespoke fitted kitchen with Premium integrated Miele appliances (including a Fridge freezer, Dishwasher, Oven, Hob)
- Bespoke breakfast bar
- Underfloor wine cellar
- Master Bedroom: includes a large double bedroom with ensuite, wardrobes and dressing table
- First Guest Bedroom: includes a large double bedroom with ensuite, wardrobes, and bedside tables
- Versatile Second Guest Bedroom: Twin bunks, easily converts to an office
- Utility room with Miele washing machine & tumble dryer
- Separate guest WC located off the corridor

Sargia II Floor Plan



Lower Deck



Upper Deck

Floor plan for illustrative purposes



MOORING LOCATION

St Mary's Wandsworth Pier

The mooring is positioned along a peaceful stretch of the Thames between Wandsworth and Battersea bridges, on the south bank of the River.

Enjoy scenic riverside strolls along the Thames Path and easy access to both Wandsworth and Battersea Park. Nearby cultural institutions such as Royal Academy of Dance and Battersea Arts Centre contribute to the area's creative atmosphere, while the regenerated Battersea Power Station has become a destination for boutique shopping, entertainment, cafés, and riverside dining.

With easy access into London, either by River Bus or by train, you can explore the sights of London and the cultural attractions and cuisines found in the city.

For full location facilities visit:



Daily life is effortlessly elevated: artisan cafés for morning coffee, characterful pubs for relaxed evenings, and an array of acclaimed restaurants offering everything from casual dining to refined cuisine are all within easy reach.

There are several supermarkets and convenience stores in nearby Wandsworth and Battersea that includes Waitrose, M&S Simply Food and Sainsbury's.



Transportation Links



AIRPORTS

Heathrow

By Road (M4) - 15.4 miles

By Train (from Clapham Junction) 40/60 mins

Gatwick

By Road - 24 miles

By Train (from Clapham Junction) 24/40 mins

London City Airport

By Road - 7.6 miles

By Train/Tube - 53-59 mins



TRAINS

Clapham Junction - 12 mins walk

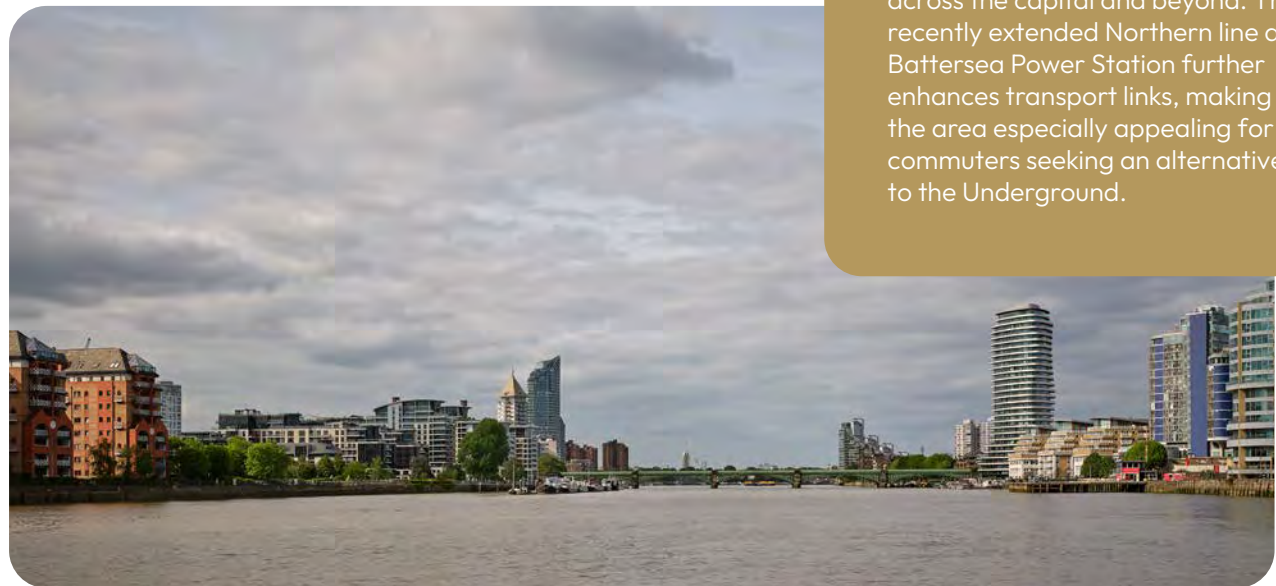
(Access to London Overground and National Rail Service on the SWR and Southern networks)



BY WATER

The Thames Clipper ferry service which docks at the pier, allows you to explore the River Thames all the way to the Royal Docks in the East and to Putney in the West

The pier provides direct river access into central London via Uber Boat by Thames Clippers, while nearby Clapham Junction — one of London's best-connected rail stations — offers fast services across the capital and beyond. The recently extended Northern line at Battersea Power Station further enhances transport links, making the area especially appealing for commuters seeking an alternative to the Underground.



WATERSPACE DEVELOPMENTS LTD

Get in touch

020 8051 4520

enquiries@waterspaceliving.co.uk

[@waterspaceliving](#)

waterspaceliving.co.uk

Waterspace Developments Ltd. assumes no responsibility and shall not be liable to any person for any loss, damage or expense caused by reliance on the information in this brochure. While we've made reasonable efforts to ensure the information is correct, the brochure is designed specifically as a broad, indicative guide only and accuracy can't be guaranteed and no representation or warranty is made in that regard. This brochure and the information contained in it does not in any way constitute or form any part of a contract for sale, transfer or lease, nor does it constitute a representation or otherwise form the basis of a contract. Photos, computer-generated images, drawings and perspectives contained in this brochure are indicative only. All sales remain subject to contract.