

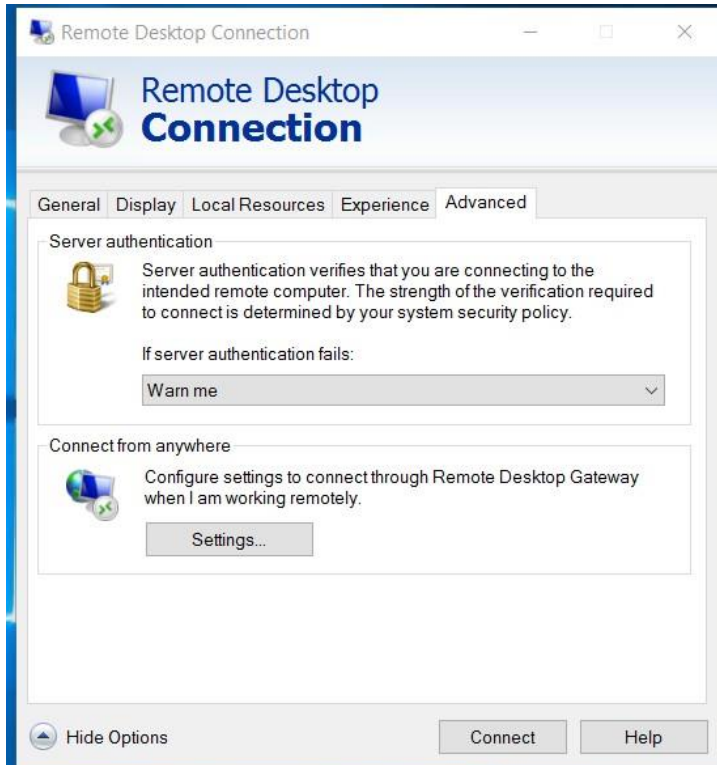
Remote Desktop Gateway setting

This explains how to setup Remote Desktop Connection client to use remotegate.uno.edu to access machines on campus from off campus. This connects you to our network and then attempts to connect you to the machine.

Look for the *Remote Desktop Connection* under the Start Menu in the folder Windows Accessories. If you have Windows 10 you can type remote desktop connection in the search area. Once you have found Remote Desktop Connection click on it to launch it. Type the full server or computer name (*i.e. remote.uno.edu*) you would like to connect to in the Computer field.



Click the *Show Options* (Alt-O) to display more settings, then click on the *Advanced* tab. Click on the *Settings* button for "Connect from anywhere" section.



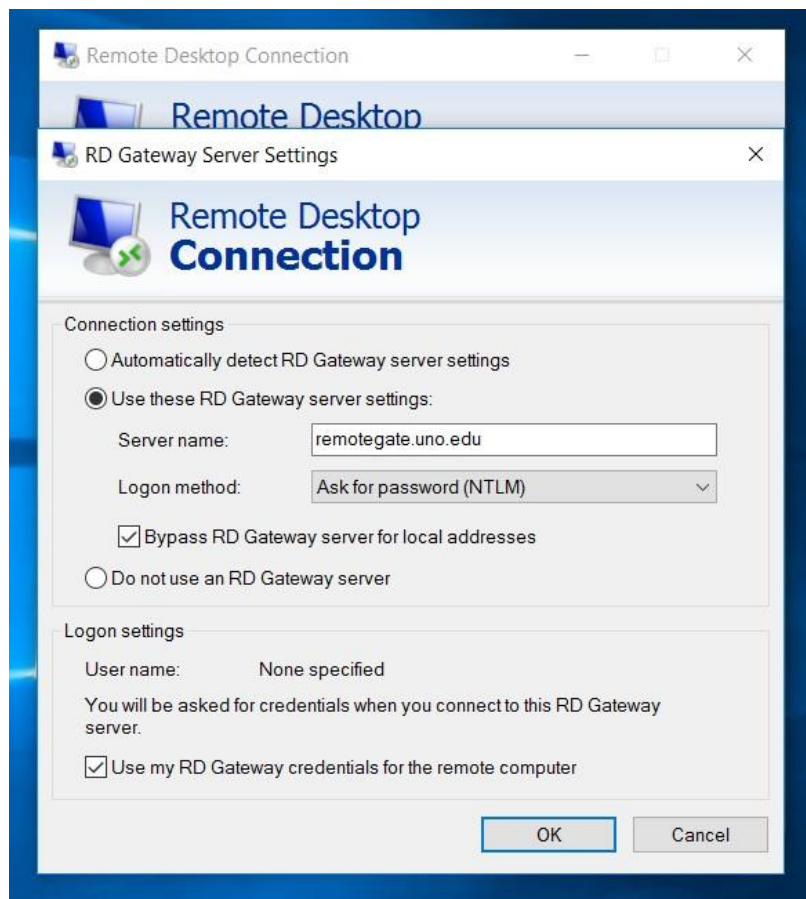
Select the radio button *Use these RD Gateway server settings*.

In Server Name type remotegate.uno.edu

In “Logon method:” select *Ask for password*.

Make sure the check box *Bypass RD Gateway for local address* is checked.

Check the box *Use my RD Gateway credentials for the remote computer*. This will allow you to only have to type your username and password once.



Click *OK*.

You may want to look at the tab for *Display* or *Local Resources* to adjust screen size, printing or access to your local drives.

Click *Connect* to connect to the server.