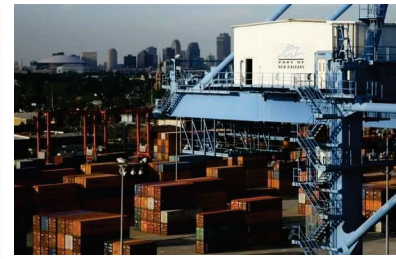
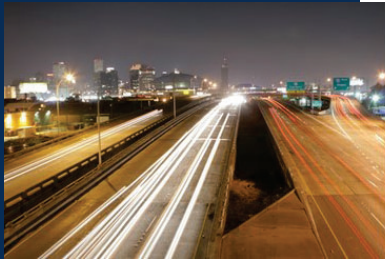




THE UNIVERSITY of
NEW ORLEANS

UNO TRANSPORTATION INSTITUTE

MASTER OF SCIENCE IN TRANSPORTATION PROFESSIONAL PROGRAM



Careers and Salaries Available with a MST Degree

Distribution Director	\$135,949	Port Manager	\$73,443
Equipment Director	\$85,476	Public Transit Operator	\$29,490
Estimating Manager	\$103,075	Public Transportation Inspector	\$49,073
Fleet Manager	\$82,899	Shipping/Receiving Admin	\$34,524
Freight Forwarder	\$40,954	Traffic/Rate Analyst	\$48,643
Import/Export Admin	\$59,552	Traffic Manager	\$80,042
International Trade Specialist	\$87,412	Transportation Admin	\$86,221
Logistics Analyst	\$48,735	Transportation Analyst	\$54,275
Marine Cargo Inspector	\$34,051	Transportation Broker	\$43,960
Materials Handling Supervisor	\$58,273	Transportation Planner	\$76,380
Operations Security Manager	\$88,387	Travel Manager	\$88,703
Package Engineer	\$63,150	Warehouse Manager	\$78,334

All students in the MS in Transportation program enjoy the benefits of in state tuition.

For More Information:

Carol Short

Associate Director

Transportation Studies

cshort2@uno.edu

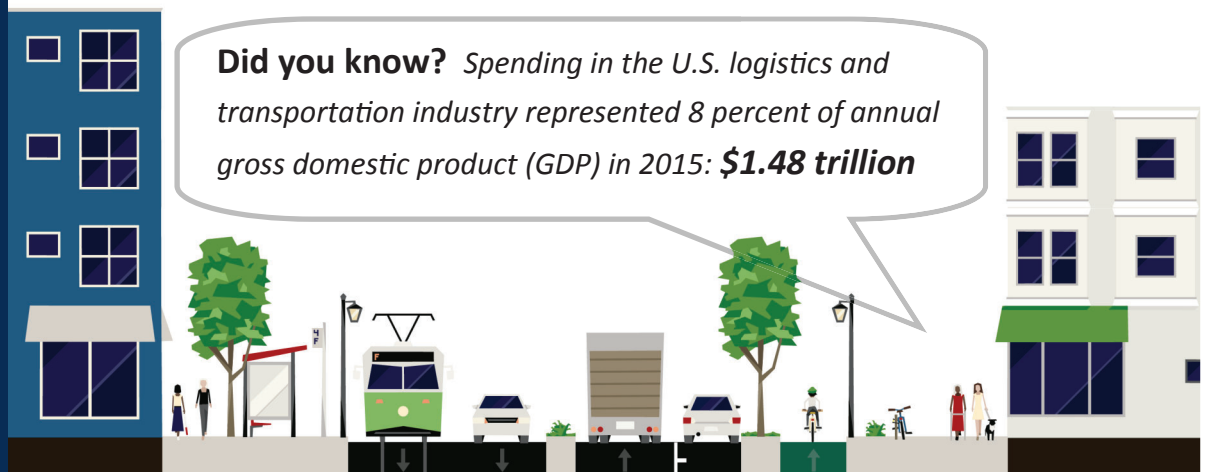
368 Milneburg Hall

2000 Lakeshore Dr.

New Orleans, LA 70148

transportation.uno.edu

Did you know? Spending in the U.S. logistics and transportation industry represented 8 percent of annual gross domestic product (GDP) in 2015: **\$1.48 trillion**



Salaries listed are median salaries based on information from payscale.com and salary.com