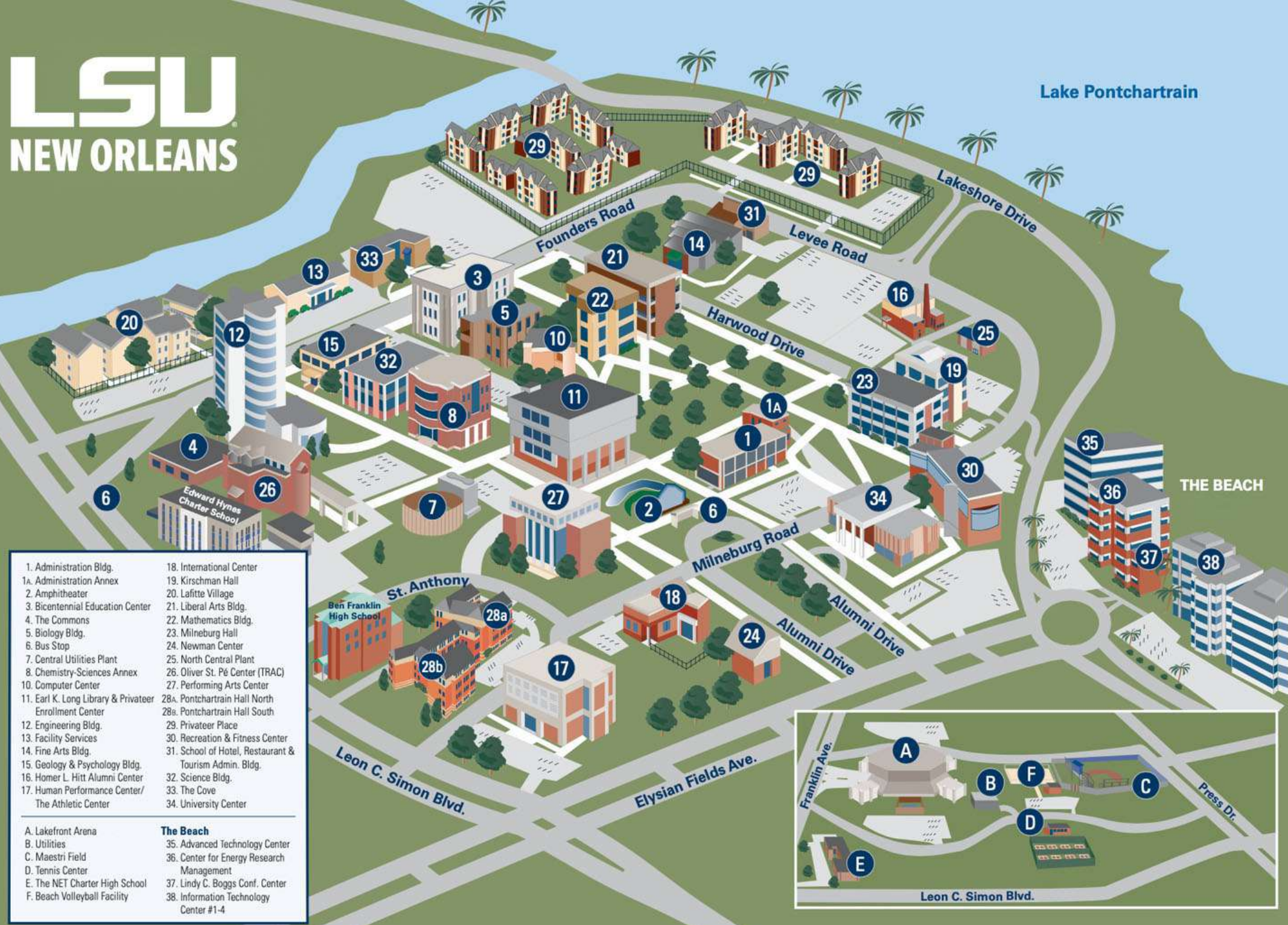


LSU NEW ORLEANS

Lake Pontchartrain



- | | |
|--|--|
| 1. Administration Bldg. | 18. International Center |
| 1A. Administration Annex | 19. Kirschman Hall |
| 2. Amphitheater | 20. Lafitte Village |
| 3. Bicentennial Education Center | 21. Liberal Arts Bldg. |
| 4. The Commons | 22. Mathematics Bldg. |
| 5. Biology Bldg. | 23. Milneburg Hall |
| 6. Bus Stop | 24. Newman Center |
| 7. Central Utilities Plant | 25. North Central Plant |
| 8. Chemistry-Sciences Annex | 26. Oliver St. Pè Center (TRAC) |
| 10. Computer Center | 27. Performing Arts Center |
| 11. Earl K. Long Library & Privateer Enrollment Center | 28A. Pontchartrain Hall North |
| 12. Engineering Bldg. | 28B. Pontchartrain Hall South |
| 13. Facility Services | 29. Privateer Place |
| 14. Fine Arts Bldg. | 30. Recreation & Fitness Center |
| 15. Geology & Psychology Bldg. | 31. School of Hotel, Restaurant & Tourism Admin. Bldg. |
| 16. Homer L. Hitt Alumni Center | 32. Science Bldg. |
| 17. Human Performance Center/The Athletic Center | 33. The Cove |
| | 34. University Center |

- A. Lakefront Arena
- B. Utilities
- C. Maestri Field
- D. Tennis Center
- E. The NET Charter High School
- F. Beach Volleyball Facility

- The Beach**
- 35. Advanced Technology Center
 - 36. Center for Energy Research Management
 - 37. Lindy C. Boggs Conf. Center
 - 38. Information Technology Center #1-4

