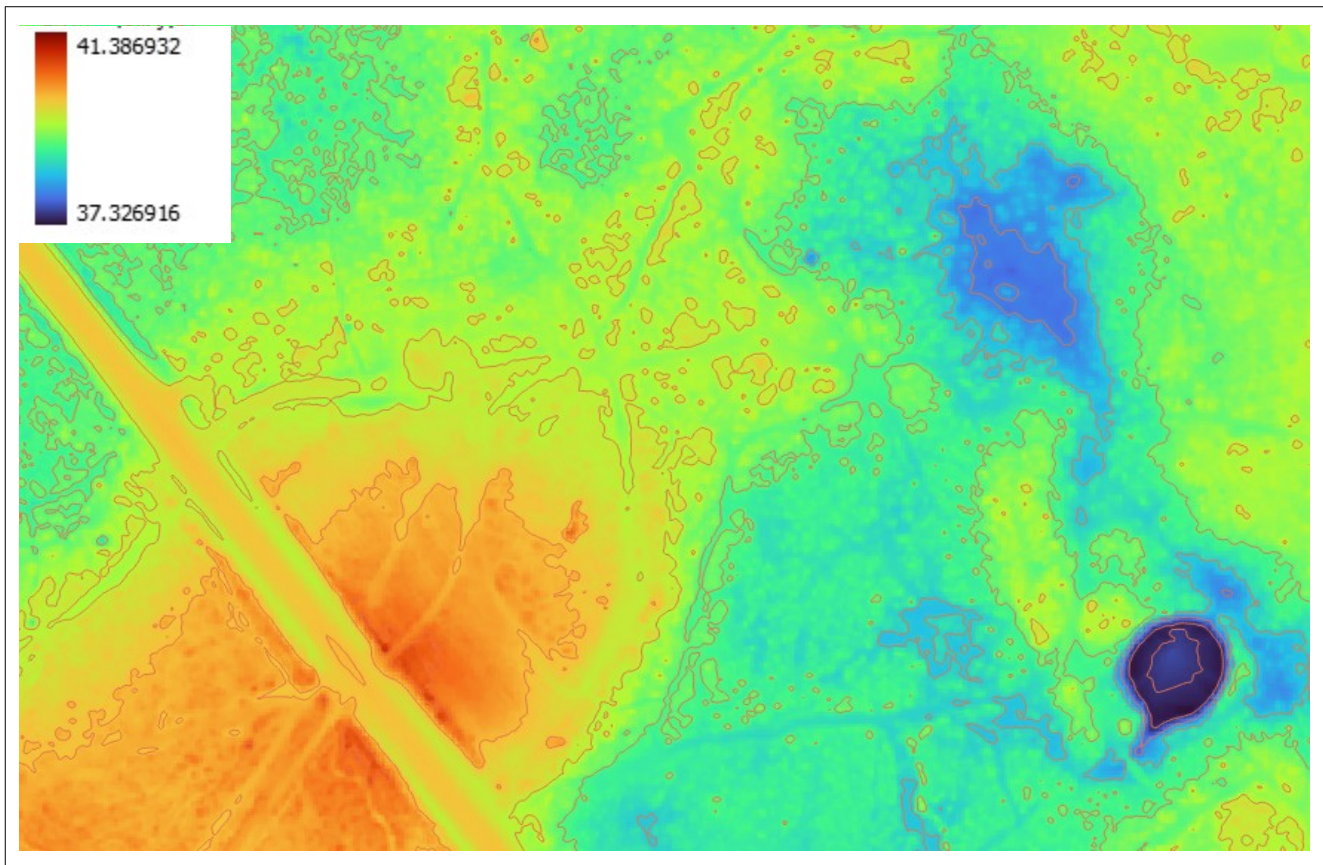


Elevation Snapshot™

Prepared Date: May 14, 2026



Approximate Terrain Elevation Summary




Elevation values shown represent approximate feet above mean sea level based on publicly available terrain data sources.

Approximate Lower Terrain Observed	37.26 ft
Approximate Higher Terrain Observed	41.86 ft
Approximate Relative Terrain Relief	4.6 ft

Observable Terrain Conditions

Observable Condition	Preliminary Observation
Relative Terrain Variation	The reviewed area appears generally flat with subtle elevation variation observable across the si
Higher Terrain Areas	Observable higher terrain conditions appear concentrated toward the southwestern portion of the property.
Lower Terrain Areas	Lower terrain and shallow depressions appear concentrated toward eastern portions of the site.
Observable Drainage Influence	Certain lower elevation areas may contribute to slower drainage or seasonal water retention conditions.
Surface Water Relationship	Observable terrain appears to generally slope toward nearby lowland or surface water features.

Terrain Constraint Outlook

Terrain Constraint Level	Interpretation
 Lower Observable Terrain Constraints	Property appears to contain generally usable terrain conditions with minimal observable elevation variation based on publicly available terrain mapping.
 Moderate Observable Terrain Constraints	Observable elevation changes, drainage influence, or lower terrain pockets may require additional grading, drainage review, or site planning consideration.
 Elevated Observable Terrain Constraints	Observable terrain variation, depressions, or steeper grade transitions may significantly impact development flexibility, drainage design, or construction costs.

Terrain Influence Factors

Terrain Factor	Relative Influence
Observable Terrain Variation	Low–Moderate
Drainage Influence	Moderate
Surface Water Relationship	Moderate
Grading Considerations	Low
Development Flexibility	Moderate
Access & Site Circulation	Low–Moderate

Preliminary Interpretation Summary

Based on observable terrain mapping and relative elevation analysis, the reviewed area appears generally favorable for preliminary development consideration with moderate topographic variation observed across portions of the site. Lower terrain areas and observable drainage influence may warrant additional review depending on the intended use and future site planning objectives.

Important Notice

Elevation values and terrain observations contained in this report are based on publicly available terrain and mapping data and are intended solely as a preliminary observational screening tool. Actual field conditions, drainage behavior, grading requirements, and site suitability should be independently verified through professional survey, engineering, and jurisdictional review prior to purchase or development decisions.