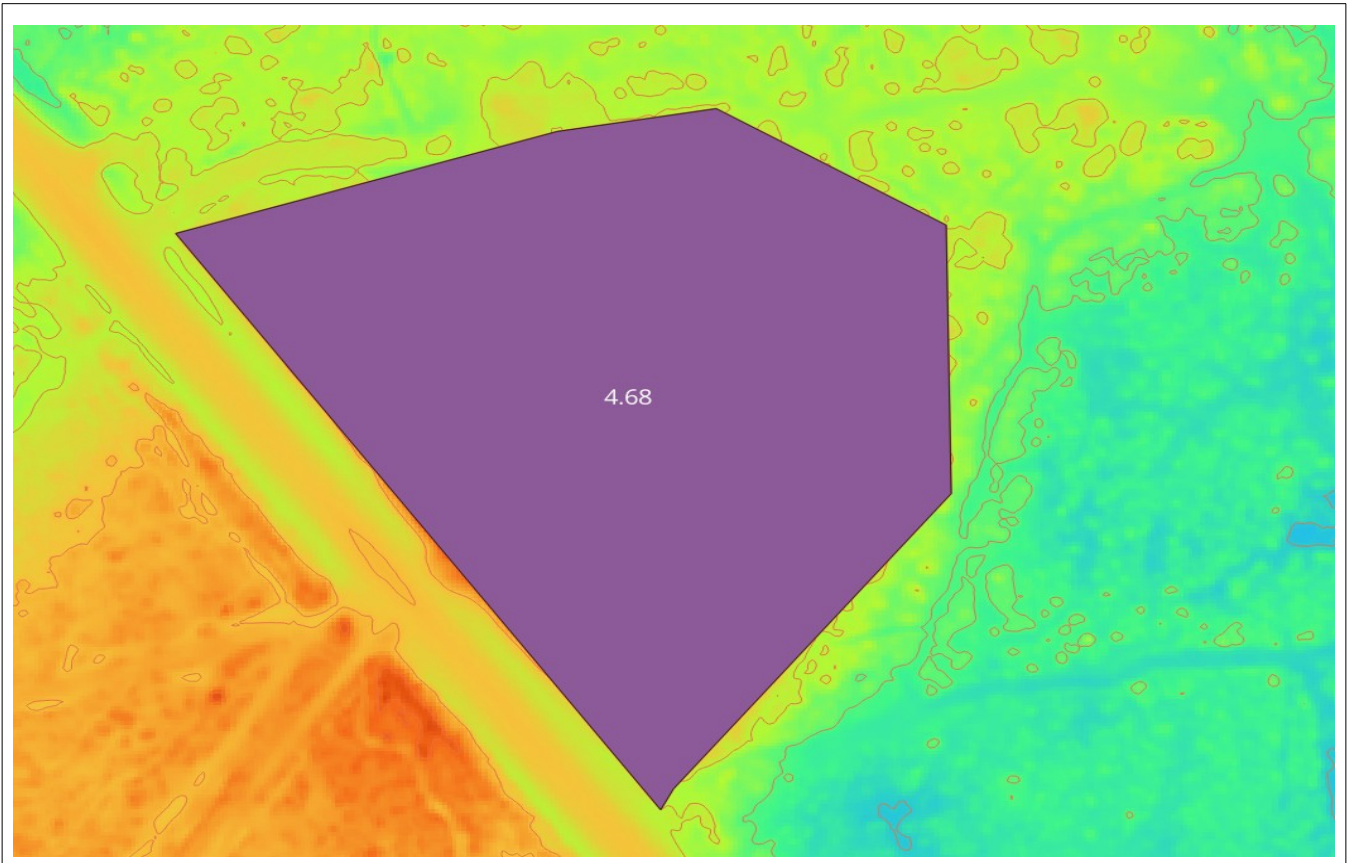


# BUILD AREA SNAPSHOT™

Build Area Map

Date 05/20/2026



## Preliminary Development Window

### Observable Condition

### Preliminary Observation




Approximate Observable Development Area	Approximate observable development window identified at 4.68 acres based on relative terrain interpretation and mapping review.
Relative Terrain Position	Highlighted area appears positioned at relatively higher elevations compared to surrounding lower terrain areas.
Observable Drainage Influence	Lower terrain and potential drainage influence appear more concentrated outside portions of the highlighted area.
Flood Influence Review	Observable flood-related constraints appear limited within portions of the highlighted development window based on publicly available mapping.
Soil & Terrain Considerations	Certain portions of the surrounding property may contain observable soil variability and lower terrain conditions requiring additional review.

## PAGE 2 — Development Constraint Outlook

### Development Constraint Outlook

#### Constraint Level

#### Interpretation

 <b>Lower Observable Development Constraints</b>	Observable terrain, drainage, and mapping conditions appear relatively more favorable for preliminary development consideration.
 <b>Moderate Observable Development Constraints</b>	Portions of the site may contain observable terrain, drainage, floodplain, or soil-related factors requiring additional review and site planning consideration.
 <b>Elevated Observable Development Constraints</b>	Observable terrain limitations, flood influence, drainage constraints, or environmental conditions may significantly impact development flexibility or construction feasibility.

### Development Influence Factors

#### Development Factor

#### Relative Influence

Relative Terrain Position	Favorable
Observable Drainage Conditions	Moderate
Floodplain Influence	Low–Moderate
Soil Variability	Moderate
Site Preparation Considerations	Moderate
Overall Development Flexibility	Moderate–Favorable

### Preliminary Interpretation Summary

Based on observable terrain relationships, publicly available mapping layers, and relative site positioning, portions of the reviewed property may present comparatively more favorable preliminary development conditions relative to surrounding lower terrain areas. Actual buildability, permitting feasibility, environmental conditions, utility availability, drainage requirements, and site suitability should be independently verified through professional due diligence and jurisdictional review.

### Important Notice

**The observable development window shown in this report represents a preliminary interpretive opinion derived from publicly available terrain and mapping datasets and should not be interpreted as a certified buildable area determination, engineering opinion, environmental clearance, or permitting approval. Additional professional evaluation is recommended prior to purchase or development decisions.**