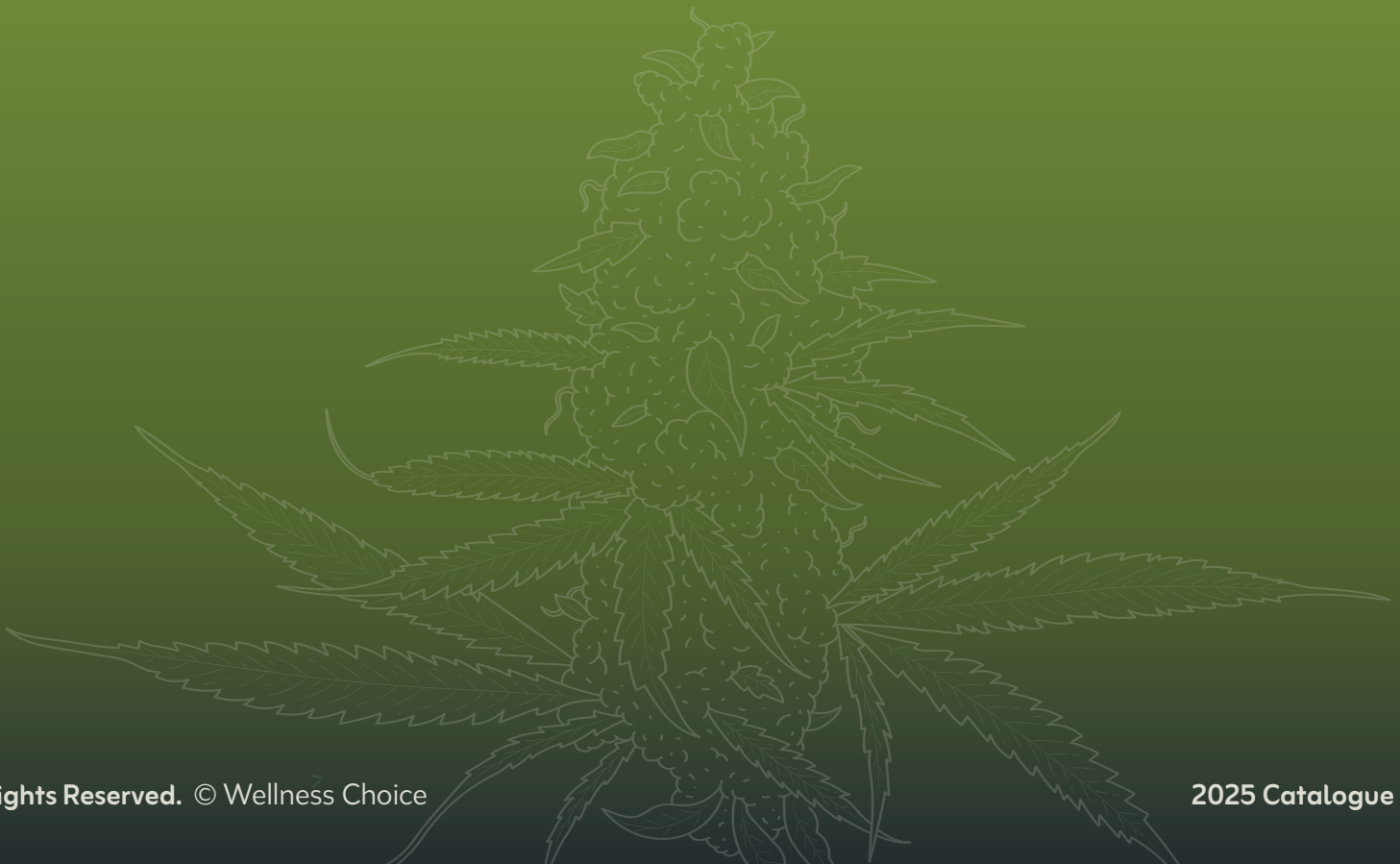




Product Catalogue



About Wellness Choice

Wellness Choice (Pty) Ltd, established in 2018, is a South African company specializing in the cultivation and processing of premium-grade medicinal cannabis for global export. Operating from modern facilities in northern KwaZulu-Natal, the company employs sterile, hydroponic cultivation methods within state-of-the-art greenhouses to ensure the highest standards of quality and consistency. Since obtaining SAHPRA licensing, Wellness Choice has continually expanded its facilities to enhance production capacity and operational efficiency.

Driven by a commitment to quality, sustainability, and social impact, Wellness Choice promotes women empowerment and actively invests in uplifting the local community through skills development and employment opportunities. The company has also established strategic partnerships globally within the major jurisdictions of the medicinal cannabis industry, strengthening its position as a trusted and compliant international supplier of high quality product. Guided by a robust Quality Management System (QMS) and adherence to GACP standards, the company maintains strict cleanliness and contamination control to guarantee medical-grade products. With innovation, ethical cultivation, and community growth at its core, Wellness Choice is dedicated to producing safe, effective medicinal cannabis that enhances health and supports a sustainable future.

Get in Touch

Gilbert Richmond

Commercial Director, Co-Founder

gilbert@wellnesschoice.co.za

Jenna-Leigh Richmond

Managing & Financial Director, Co-Founder

jenna@wellnesschoice.co.za

Jaeger Richmond

Operations Director, Co-Founder

jaeger@wellnesschoice.co.za

BLUNICORN

Anxiety • Chronic Pain • Depression



STRAIN PROFILE

Blunicorn is a balanced hybrid medicinal cannabis flower, carefully dried to preserve its natural properties. Each gram of this premium flower contains between 23% and 26% THC (dry weight). Blunicorn is distinguished by its rich, fruity infusion of blueberry, berry, and mango notes. Medicinal cannabis patients often select Blunicorn to help relieve symptoms associated with anxiety, chronic pain, and depression.

1 TYPE

NIGHT/INDICA-dominant, DAY/SATIVA-dominant
OR balanced HYBRID

Evenly balanced hybrid

2 PARENTS / LINEAGE

Blue Sherbet x Unicorn Poop

3 THC POTENCY (%) / CBD

24%-27% THC / Low CBD

4 TERPENE PROFILE (%)

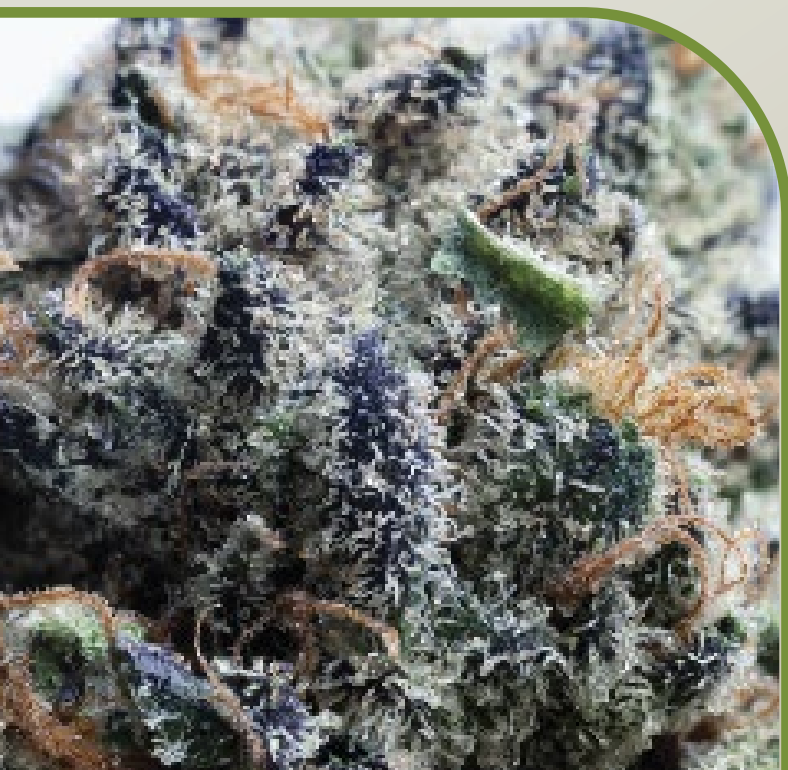
2.4% - 2.8% (The most abundant terpene is: Alpha-Pinene | Beta-Myrcene | Limonene)

5 SMELL & FLAVOUR

Blueberry, Berry and Mango

6 EFFECTS & USAGE

Blunicorn delivers a calming yet uplifting experience, making it ideal for patients seeking relief from anxiety, chronic pain, and depression while maintaining a balanced sense of wellbeing.



BLUNICORN

JACK HERER

Chronic Pain • Focus • Depression



STRAIN PROFILE

Jack Herer is a Sativa-dominant dried medicinal cannabis flower. Each gram of dried flower contains 22%–26% THC (dry weight). Jack Herer features an infusion of bubblegum and root beer flavours. Medicinal cannabis patients select Jack Herer to help relieve symptoms associated with chronic pain, migraines, anxiety, and depression. Improved focus and an energising effect are among its long-lasting benefits.

1 TYPE

NIGHT/INDICA-dominant, DAY/SATIVA-dominant
OR balanced HYBRID

SATIVA-dominant

2 PARENTS / LINEAGE

Haze, Northern Lights No.5
and Shiva Skunk

3 THC POTENCY (%) / CBD

22% - 26% THC / Low CBD

4 TERPENE PROFILE (%)

1.5% - 2.65%

5 SMELL & FLAVOUR

Bubblegum and Root Beer

6 EFFECTS & USAGE

Jack Herer offers an uplifting and energising experience, making it well-suited for patients seeking relief from pain, fatigue, and mood-related symptoms while enhancing focus and motivation.



JACK HERER

JACK BLUE DREAM

Fatigue • Pain • Depression



STRAIN PROFILE

Jack blue Dream is a stimulating hybrid with familiar flavors and gentle effects. This scintillating cross of two of the classics in Jack Herer and Blue Dream offers the consumer an immediate rush of energy that crests into heady euphoria that encourages laughter. The smell and taste have been described as a unique flavour profile, exhibiting hints of sour lemon, pine, diesel with under tones of guava. The smoke is very sweet on the pallet. Enjoy Jack blue Dream throughout the day to improve mood and stimulate creativity.

1 TYPE

NIGHT/INDICA-dominant, DAY/SATIVA-dominant
OR balanced HYBRID

SATIVA-dominant

2 PARENTS / LINEAGE

Jack Herer and Blue Dream

3 THC POTENCY (%) / CBD

22% - 26% THC / Low CBD

4 TERPENE PROFILE (%)

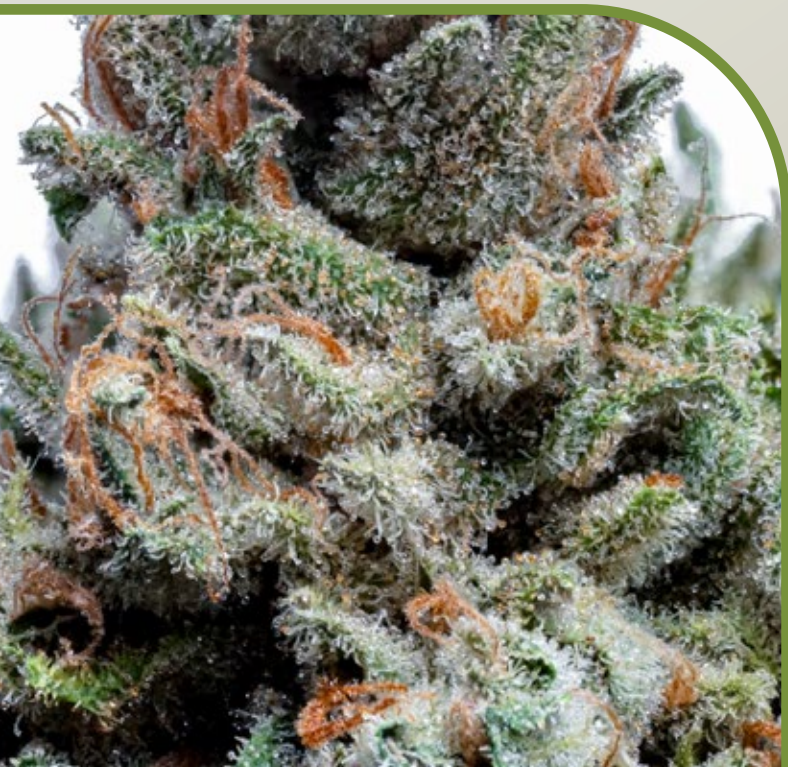
2.5% – 3.5% (Dominant Terpenes:
Beta Myrcene | Alpha Pinen | Beta
Pinene)

5 SMELL & FLAVOUR

Sour lemon, pine, diesel with guava
undertones

6 EFFECTS & USAGE

Jack Blue Dream provides patients with clear-headed focus, calming relaxation, and energetic uplift. It eases stress, anxiety, depression, and mild pain while boosting mood and creativity – ideal for daytime relief without sedation or mental fog.



JACK BLUE DREAM