



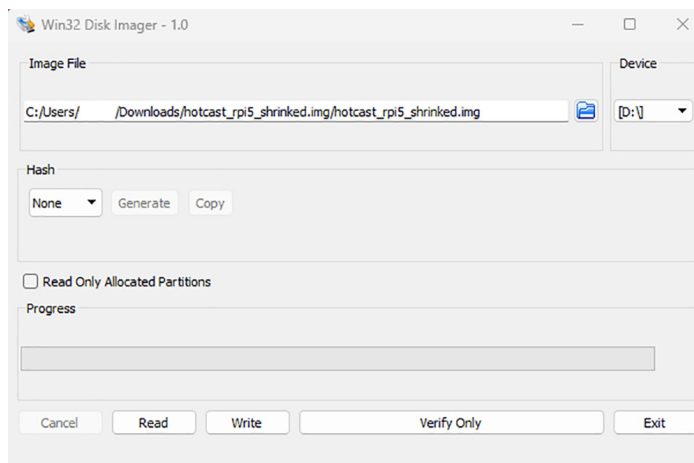
hotcast

Hotcast installation guide

Integrate
Hotcast
service with
Pro:Centric
middleware
(Direct and Cloud)

- ✓ A Raspberry Pi5 (4GB RAM) with a case.
- ✓ A 32 GB SD card (a good branded one).
- ✓ A power supply for it (at least 27W).
- ✓ A USB reader/writer for writing the **hotcast image** in the SD card.

1. Download the Raspberry hotcast image from the link that you were provided by Hotcast.
When unzipped the filename will be:
"hotcast_rpi5_shrunked.img"
2. Flash the image to the SD card using the "Win32DiskImager" tool.
ATTENTION: This tool may conflict with Google Drive, stop Drive if DiskImager cannot launch.
Select the .img file and the SD card device, leave values to default as below:



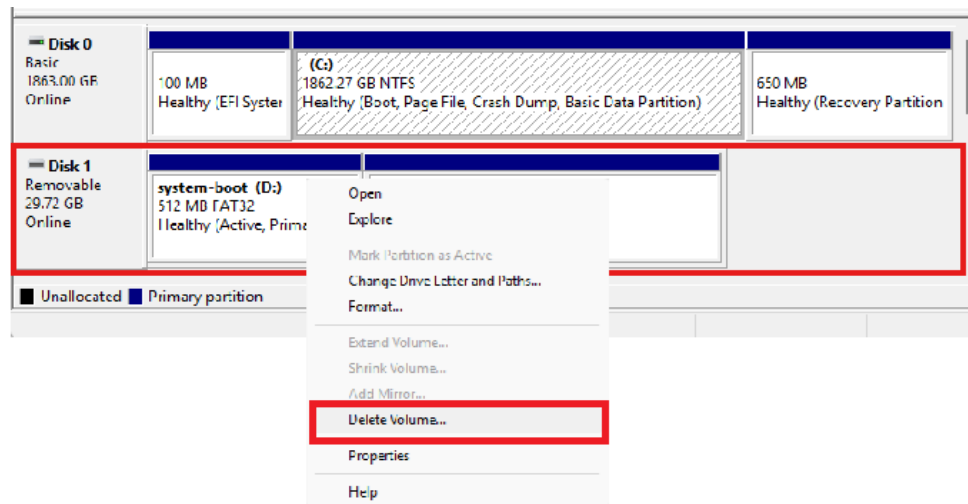
3. Plug SD, Network (with internet) and Power to Raspberry.
4. Wait a minute to boot, you will see a new WiFi "Hotcast", connect with your mobile.
(pass: "12345678")
5. Launch browser site "setup.hotcast.tv", the registration site of the Gateway will open.
6. Fill your user account email as a Hotcast partner and give a meaningful name below (Ex. "Hotel A").
7. **That's it**, the Gateway is immediately operational with 1 week licenses.

If the SD card flash did not complete successfully you have to erase all its partition before starting again, you can follow the steps below for this process.

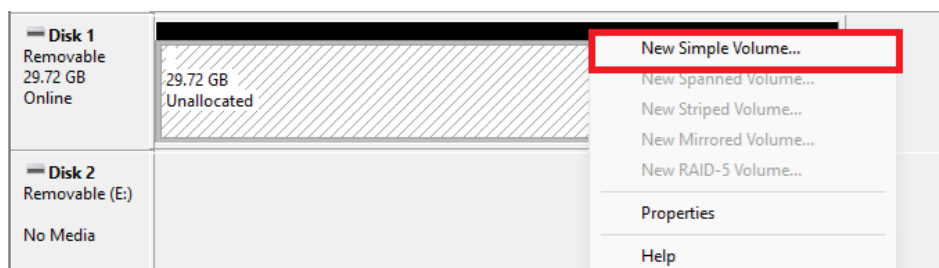
Type "diskmgmt" in windows search and launch the Disk Management tool.

Delete all partitions in SD card to reclaim all space.

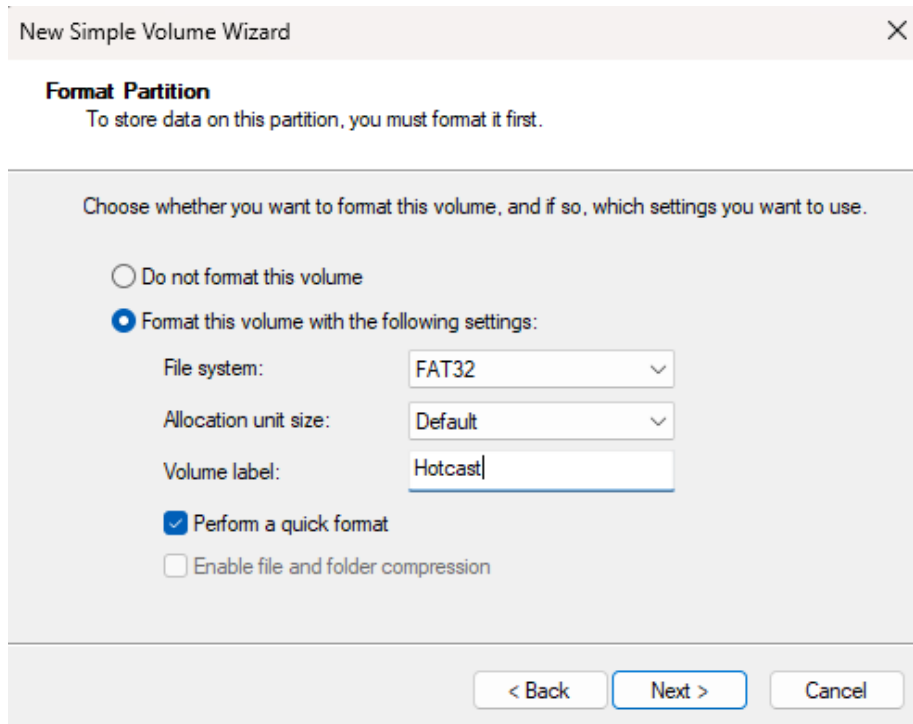
WARNING: check the size of this disk to be at most 32GB, you don't want to erase your disk partition.



In the reclaimed space of the partition, right click and select "New Simple Volume".



Follow the steps and select to Format this partition with FAT32 File System.



Now the SD card is clean and fresh again, you can follow the Hotcast installation steps in this document.

Tips

RPi5 has a shutdown button, if you want to remove SD card, or remove power, it is a good practice to shutdown first to avoid SD corruption.

SD cards DO NOT hold gateway information, you can deliver a second flashed SD to your client as a backup, it is safe to swap cards any time and the Gateway information is not affected, you can even swap SD cards between different Gateways without affecting their naming and locations.

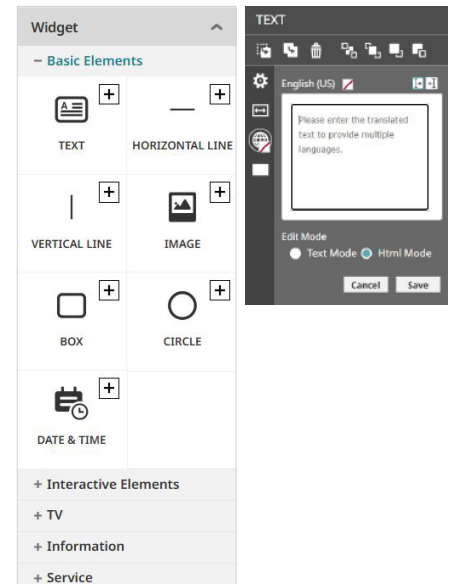
Pro:Centric

- Hotcast service needs an iFrame in order to be launched.
- For iFrame it can be used the TEXT widget with HTML Mode enabled in Pro:Centric placed in a page.
- A button can be used to target the page with the iFrame.
- iFrame will use the URL from Hotcast to launch inside Pro:Centric project as a native feature.

Edit an existing page or create a new one.

Delete all the components of this page.

Choose the **TEXT widget** and drag and drop it.



Configuring the iFrame

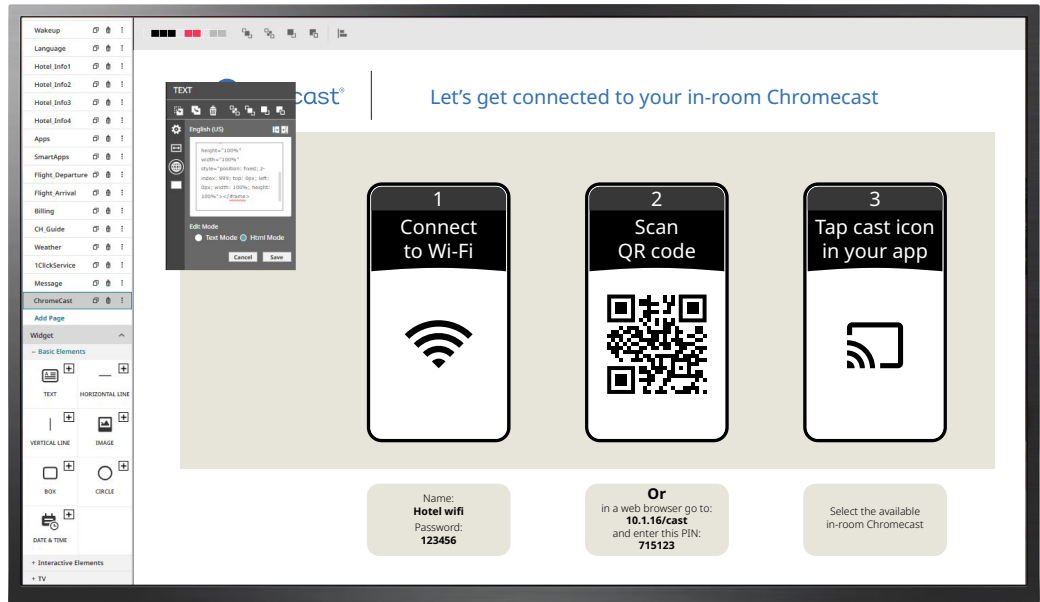
In the TEXT widget change Edit mode to HTML Mode

Enter the HTML below inside the Text box.

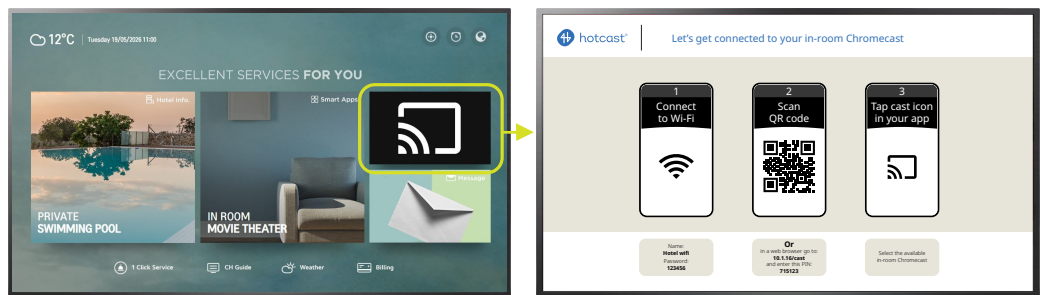
The URL is provided by Hotcast and is **unique per hotel**.

The most attributes instruct iFrame to be Full Screen and visible on top of other elements.

```
<iframe src="https://hotcast.tv/tv/d83add945b6f" frameborder="0"
scrolling="no" height="100%" width="100%" style="position: fixed;
z-index: 999; top: 0px; left: 0px; width: 100%; height: 100%"></iframe>
```



Example of iFrame with HTML



Example of Home page with button



info@hotcast.tv
www.hotcast.tv