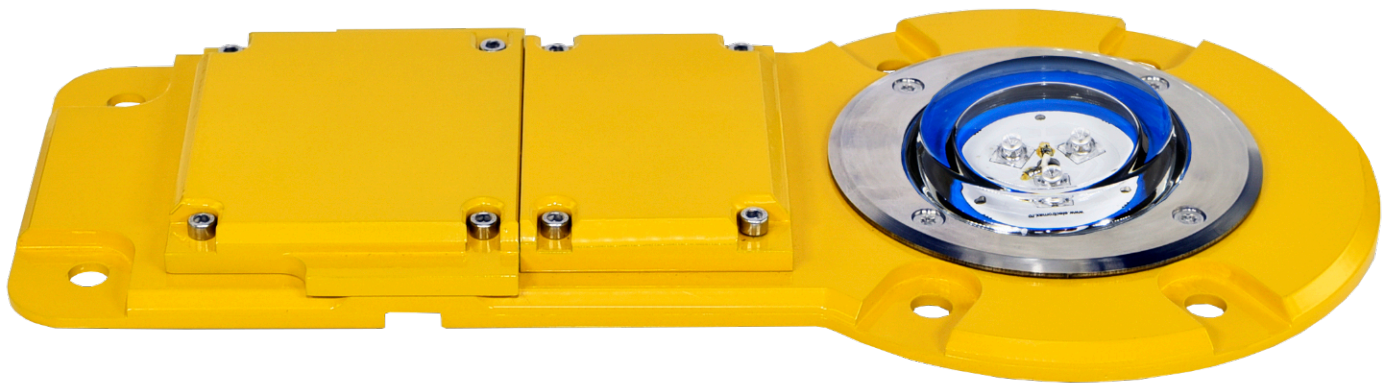
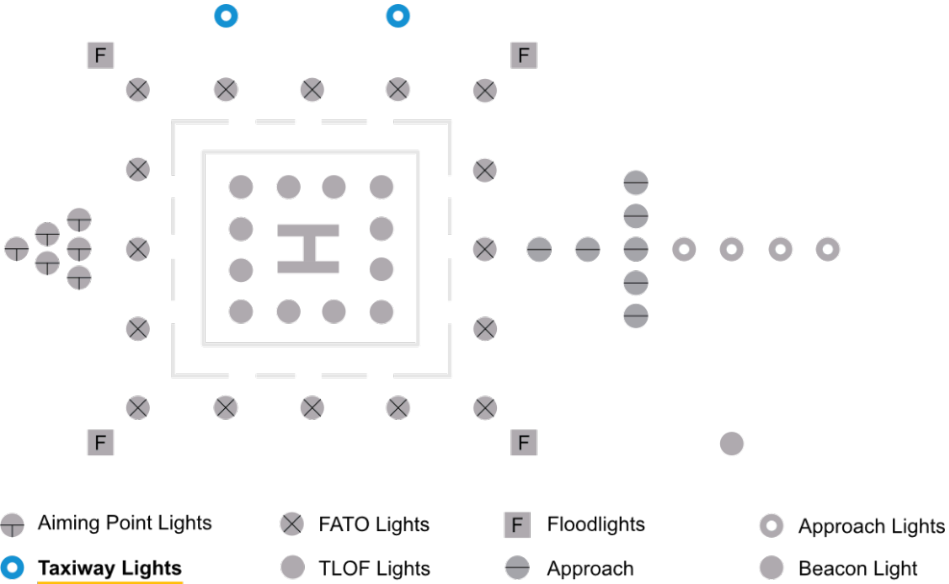


# Flat Taxiway - FD



|                                       |   |
|---------------------------------------|---|
| <p><b>Compliance to Standards</b></p> | <p><b>ICAO:</b><br/>International Civil Aviation Organization, Aerodromes, Annex 14, Vol. 1</p> <p><b>ICAO:</b><br/>Annex 14, Volume II - Heliports</p> <p><b>IEC TS 61827:</b><br/>Electrical installations for lighting and beaconing of aerodromes. Characteristics of inset and elevated luminaires used on aerodromes and heliports</p>  |
| <p><b>Application</b></p>             | <p>Taxiway lights</p>  <p> <span>⊗ Aiming Point Lights</span>                <span>⊗ FATO Lights</span>                <span>F Floodlights</span>                <span>⊖ Approach Lights</span><br/> <span>● <u>Taxiway Lights</u></span>                <span>⊖ TLOF Lights</span>                <span>⊖ Approach</span>                <span>● Beacon Light</span> </p> |
| <p><b>Features</b></p>                | <p>Designed and built with simplicity and ease of maintenance in mind.</p> <p>High-power LED technology with an estimated lifetime of 100,000 hours.</p> <p>Lightweight, low-energy and environment friendly lighting fitting. Extensive use of aluminium alloys reduces fitting weight and eases handling in the field.</p>  |

|                            |  |
|----------------------------|--|
| <p><b>Product Code</b></p> | <p><b>AL - 072 - 03 - BL - FD</b></p> <p>Series Indicator (Airfield Lighting) <b>AL</b></p> <p>Product Indicator <b>072</b></p> <p>LEDs Number <b>03</b></p> <p>LEDs Light Color (Blue) <b>BL</b></p> <p>Indicative for surface mounting fixture <b>FD</b></p>   |
| <p><b>Description</b></p>  | <p><b>Housing</b> - Powder coated aluminium RAL 1004 (aviation yellow)<br/> <b>Disperser</b> - hardened glass<br/> <b>Disperser flange</b> - nickel plated ring<br/> <b>Cable gland</b> - nickel plated brass<br/> <b>Fasteners</b> - stainless steel</p> <p>Light fixtures are provided with anti condensation valve.<br/>         Light fixtures are UV protected.</p> |
| <p><b>Environment</b></p>  | <p><b>Temperature range:</b> -55° to +55°</p> <p><b>Degree of protection:</b> IP68</p> <p><b>Humidity:</b> 0-100%</p> <p><b>Ka tested:</b> Salt mist - in accordance with:<br/>IEC 60068-2-11 &amp; IEC 60068-2-25</p>   |
| <p><b>Mounting</b></p>     | <p>Light fixtures are designed to be mounted on any hard flat surface, such as:</p> <p><input checked="" type="checkbox"/> Concrete      <input checked="" type="checkbox"/> Asphalt      <input checked="" type="checkbox"/> Metallic structures</p>  |

**Electrical Characteristics**

**Power consumption:** 3.15 W

**Power supply:**

48 VDC from controller - dimmable: 100%, 30%, 10%

90-230 V, 50/60 Hz - non dimmable

1.4 A CC - dimmable: 100%, 30%, 10% (internal bypass + SPD)

**Types of power supply:**

48 VDC power supply from controller with 3 core cable

**V+** (brown)

**V-** (blue)

**Dimming** (green/yellow)

230 VAC directly from mains power supply

**Live** (brown)

**Neutral** (blue)

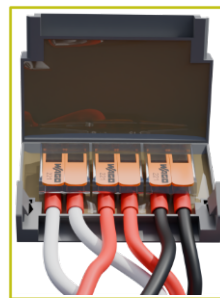
**Ground** (green/yellow)

1.4 A CC power supply from controller with 2 core cable

**V+** (red mark)

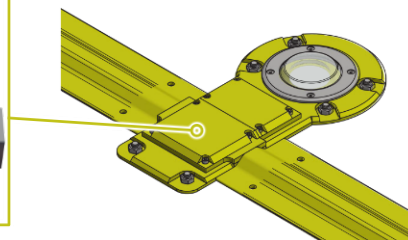
**V-** (blue mark)

Electrical connections are made inside the housing using a gel-filled junction box (gelbox).



Gelbox

**Code: 201-2593**



The light fixture is supplied with a sufficiently long cable, which is routed through a channel outside the heliport area.

The power cable will be protected by an aluminum cable protection with a weight of 2.2 kg/m.

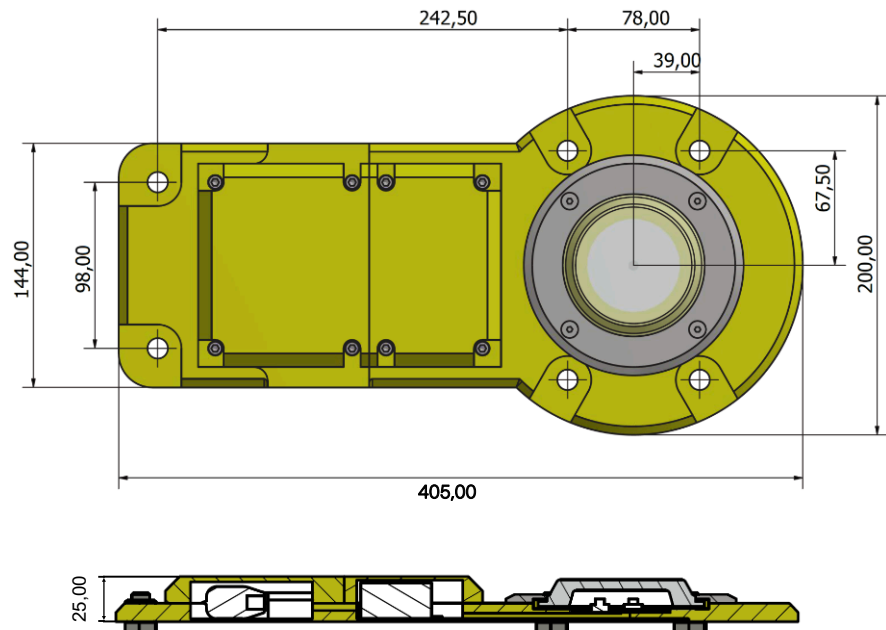


Cable protection

**Code: AL-119-AX**

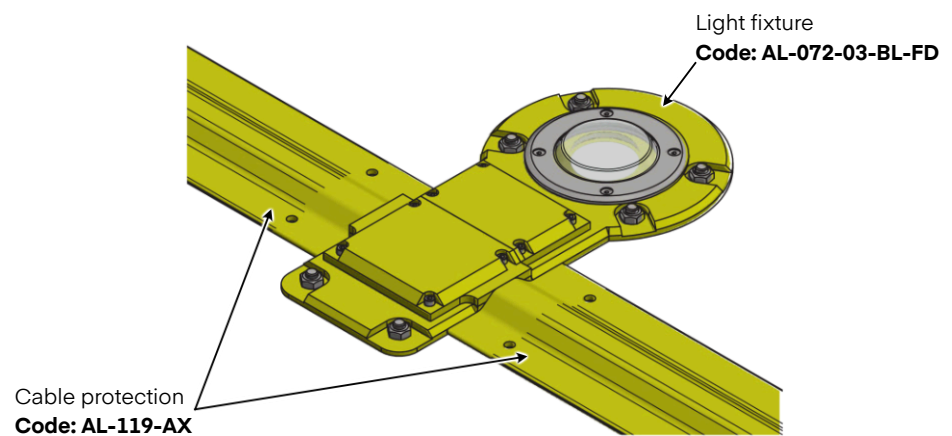
**Mechanical Characteristics**

**Length:** 405 mm  
**Width:** 200 mm  
**Height:** 25 mm  
**Weight:** 2.5 kg



Installation of lighting fixture and cable protection:

- with M10 welded bolts on the metallic platform
- with M10 threaded holes in the metal platform



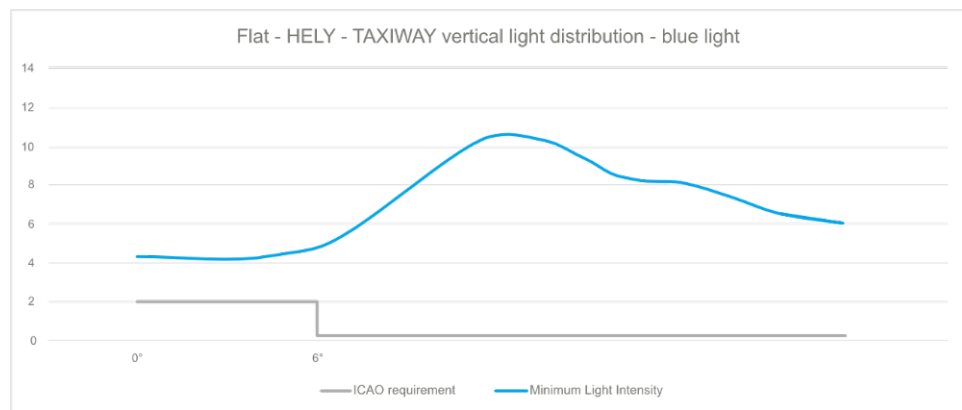
Photometric Characteristics

**Intensity level:** 100%, 30%, 10% with version powered in 48 VDC or 1.4 A CC

**Horizontal output:** 360°

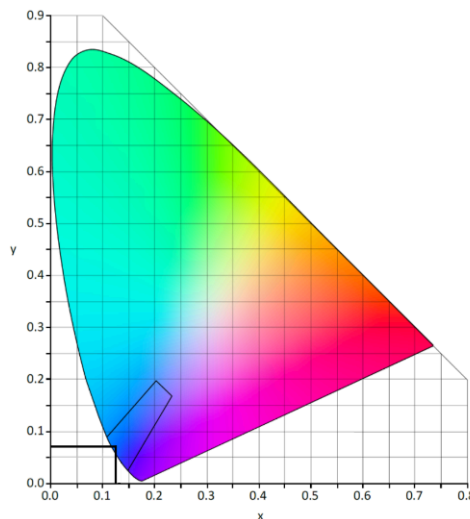
**Light color:** Blue

|  |       |      |
|--|-------|------|
| <b>Vertical elevation angle</b>        | 0°-6° | >6°  |
| <b>Required minimum intensity [cd]</b> | 2     | 0.2  |
| <b>Measured minimum intensity [cd]</b> | 4.3   | 10.6 |



The brightness intensity values complies with:  
**ICAO requirements Annex Annex 14 Vol.1 cap.5.3.18.8**

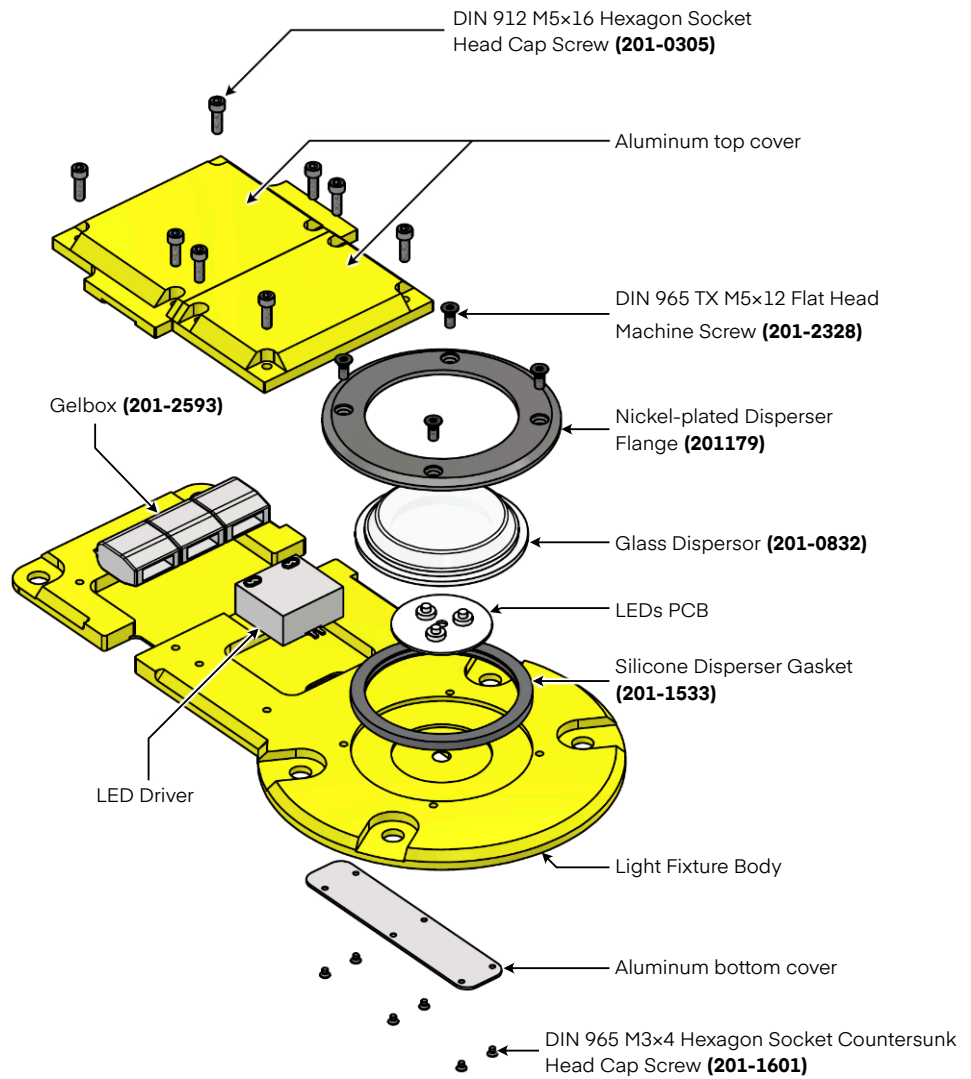
The light color emitted by the light fixture is white, with the following trichromatic coordinates:



The measured trichromatic coordinates correspond to color range requirements in:


**ICAO Annex 14 - Aerodromes Vol.1, fig, A1-1b. Colors for aeronautical ground lights (solid state lighting)**

**Spare Parts**



**Accessory**

To order accessories please call our customer support. For contact details please refer to our website - [www.signalight.com](http://www.signalight.com)

| # | Name - Series    | Product Code | Image   |
|---|------------------|--------------|---|
| 1 | Cable protection | AL-119-AX    |  |



**Signalight**

**+40 254 515 465**  
**office@signalight.com**

36 Lunca Street, Petrosani,  
Hunedoara County, Romania

**[www.signalight.com](http://www.signalight.com)**